

FEATURES & SPECIFICATIONS

INTENDED USE — The industry's next generation in linear direct fluorescent products. This new compact, low-profile design offers our customers unique product features which improve the overall installation process and appearance while reducing labor cost, making it the most versatile solution for commercial, retail, manufacturing, warehouse, and cove and display applications.

CONSTRUCTION — Compact designed channel and cover are formed from code-gauge cold-rolled steel. Innovative T8 two-lamp back plate offers compact design and additional socket protection. Locking lamp holder tracks bolsters strength of the overall strip construction while creating improved lamp stability. Design includes T8 socket, features rotating collar and enclosed contacts. Improved easy "snap n' lock" end plates allow for quick attachment.

Designed to accommodate a wide variety of T8 lamp lengths. Channel offers the gripper back feature which strengthens the overall construction and allows for the use of the new Z spring hanger (see back). Newly designed, patent-pending channel cover offers a secure fit design, allowing for easy access and quick attachment without pinching wires.

Finish: High-gloss, baked white enamel finish (white standard). Five-stage iron-phosphate pretreatment ensures superior paint adhesion and rust resistance. Other channel paint finish options: black (MB), smoke gray (SMG) and galvanized (GALV).

OPTICS — Reflector options include solid or apertured designs in both symmetric and asymmetric configurations. Consult factory for special-apertured versions.

ELECTRICAL — Thermally protected, resetting, Class P, HPF, non-PCB, UL listed. Suitable for damp locations. AWN, TFN or THHN wire used throughout, rated for required temperatures.

INSTALLATION — Patented-pending "three-point" row connector locks channel together for straighter and faster row mounting; included as standard. Ideal for surface-mount or suspended.

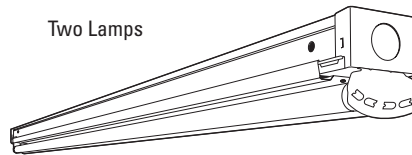
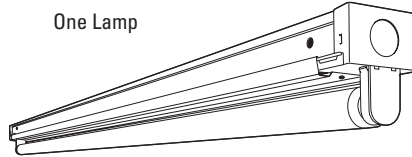
LISTINGS — UL Listed, CUL Listed or CSA Certified to Canadian Standards. Listed for 25° C ambient temperature.

WARRANTY — Guaranteed for one year against mechanical defects in manufacture.

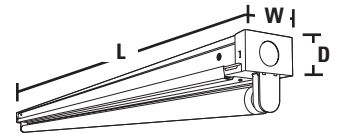
Catalog Number	
Notes	Type



Compact T8 Striplight



Linear Lamps
1 or 2 Lamps



Specifications

Length:	18 (45.7), 24 (61.0)
	36 (91.4), 48 (121.9)
	72 (182.9) or 96 (243.8)
Width:	2-1/8 (5.4)
Depth:	1-1/2 (3.8)

All dimensions are inches (centimeters).

ORDERING INFORMATION

For shortest lead times, configure product using **standard options (shown in bold)**.

Example: Z 1 32 MVOLT GEB10IS

Series	Number of lamps	Lamp type	Voltage	Options
Z Compact strip¹	1 2 Not included	17 17W T8 (24") 25 25W T8 (36") 32 32W T8 (48")	120 277 347 MVOLT Others available	GEB10IS T8 electronic ballast, ≤ 10% THD, instant start (T8 only) GEB10RS T8 electronic ballast, ≤ 10% THD, rapid start BILP High-efficiency .78 bf (low) GLR Internal fast-blow fuse (add X for external) ² GMF Internal slow-blow fuse (add X for external) ² PLR Plug in wiring, specify number of branch circuits and hot wires (A-black, B-Red, C-Blue, AB or AC) TILW Tandem in-line wiring EL55 Emergency battery pack (nominal 390-700 lumens); consult factory for additional battery packs ^{2,3,4} EL65 Emergency battery pack (nominal 725-1325 lumens) ^{2,3,4} CSA CSA Certified NOM NOM Certified
<p>For tandem double-length unit, add prefix T. Example: TZ</p>				
Accessories				
Order as separate catalog numbers.				
SQ_	Swivel-stem hanger (specify length in 2" increments)			
ZSPRG	Tong and T-grid hanger			
Z8SMR48	Symmetric reflector, 4' white			
Z8ASR48	Asymmetric reflector, 4' white			
Z8SMR36	Symmetric reflector, 3' white			
Z8ASR36	Asymmetric reflector, 3' white			
Z8SMR24	Symmetric reflector, 2' white			
Z8ASR24	Asymmetric reflector, 2' white			
WVGZ48	4' wireguard, white			
WVGZ8SMR48	4' wireguard, white, for symmetric reflector			
WVGZ8ASR48	4' wireguard, white, for asymmetric reflector			

NOTES:

- Order two 48" for 8' fixtures.
- Specify voltage (available 120/277V).
- Not available with CSA Certified.
- Available with 4' and 8' lengths only.

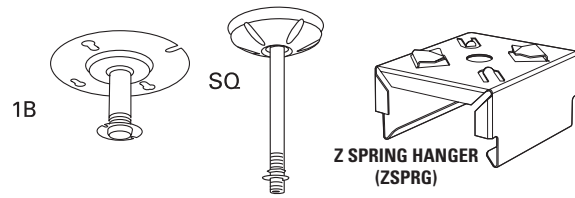
Z Compact Striplight

MOUNTING DATA

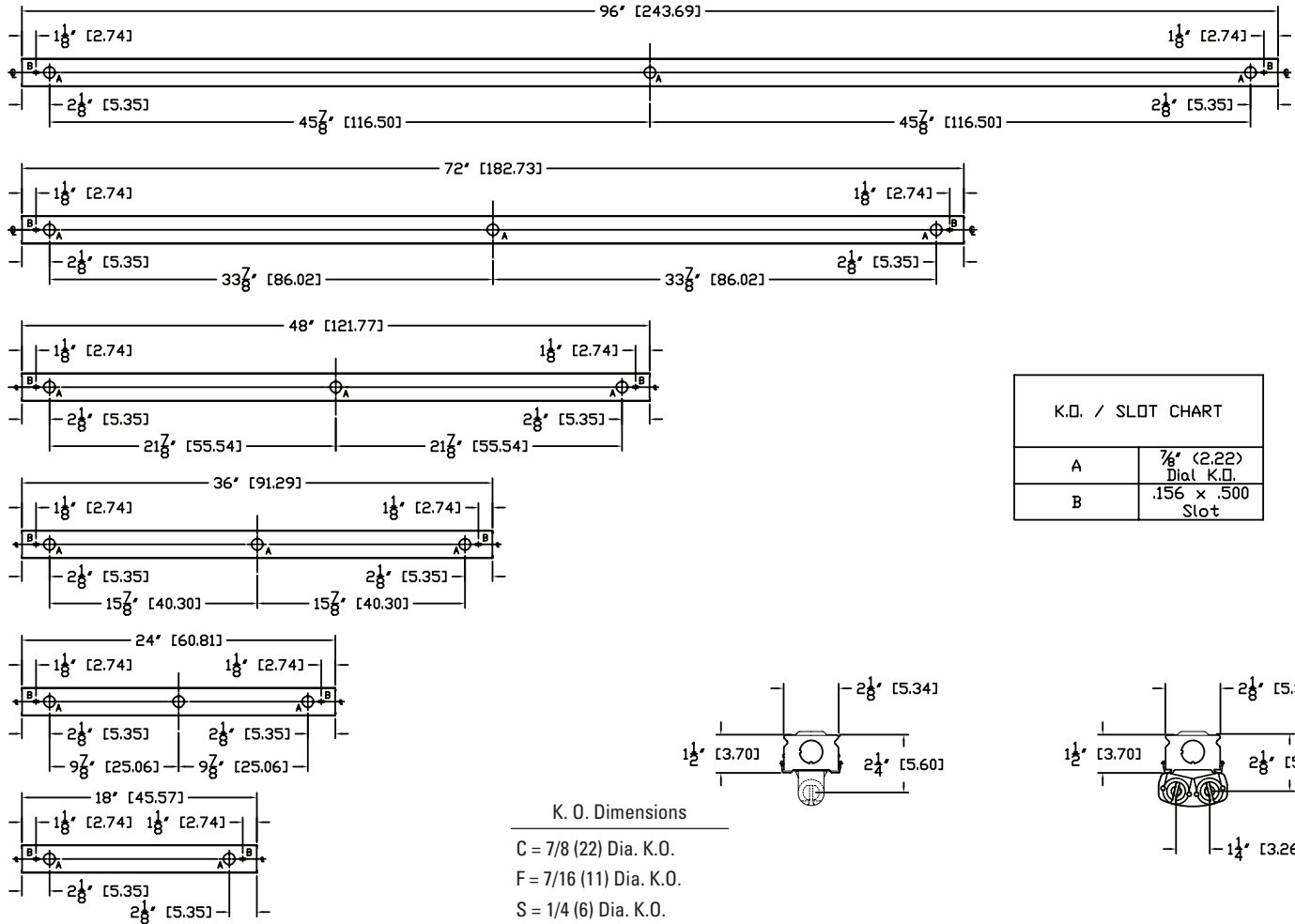
For unit or row installation, surface or stem mounting.

Unit installation — Minimum of two hangers required.

Row installation — One hanger per channel plus one per row required.



DIMENSIONS



PHOTOMETRICS

Calculated using the zonal cavity method in accordance with IESNA LM41 procedure. Floor reflectances are 20%. Lamp configurations shown are typical. Full photometric data on these and other configurations available upon request.

TEST NO: LTL17128
LUMINAIRE CATALOG NO.: Z 1 32 MVOLT GEB10IS
LUMENS PER LAMP: 2800

TEST NO: LTL17130
LUMINAIRE CATALOG NO.: Z 2 32 MVOLT GEB10IS
LUMENS PER LAMP: 2800

RGR	Coefficients of Utilization					
	20%		70%		50%	
	50%	30%	10%	50%	30%	10%
0	107	107	107	102	102	92
1	87	82	77	83	78	74
2	74	66	60	70	63	57
3	64	55	48	61	53	46
4	56	47	40	53	45	38
5	49	40	33	47	39	32
6	44	35	29	42	34	28
7	40	31	25	38	30	24
8	36	28	22	34	27	21
9	33	25	19	31	24	18
10	30	22	17	29	22	16

RGR	Coefficients of Utilization					
	20%		70%		50%	
	50%	30%	10%	50%	30%	10%
0	100	100	100	95	95	86
1	84	79	75	79	75	71
2	71	64	59	68	62	56
3	62	54	47	59	51	46
4	54	46	39	51	44	38
5	48	39	33	46	38	32
6	43	34	29	41	33	28
7	38	30	25	37	29	24
8	35	27	22	33	26	21
9	32	24	19	30	24	18
10	29	22	17	28	21	17

Zonal Lumen Summary		
Zone	Lumens	% Lamp % Fixture
0° - 30°	356.4	12.7
0° - 40°	603.9	21.6
0° - 60°	1198.3	42.8
0° - 90°	2029.3	72.5
90° - 180°	602.8	21.5
0° - 180°	2632.0	94.0

Zonal Lumen Summary		
Zone	Lumens	% Lamp % Fixture
0° - 30°	723.3	12.9
0° - 40°	1230.3	22.0
0° - 60°	2402.0	42.9
0° - 90°	3748.6	66.9
90° - 180°	1215.1	21.7
0° - 180°	4963.7	88.6



Lithonia Lighting
Industrial
One Lithonia Way, Conyers, GA 30012
Phone: 800-315-4963 Fax: 770-929-8789
www.lithonia.com