



No.:

Date: 19-DEC-2012

Customer :

TECHNICAL PROPOSAL

Three-phase induction motor - Squirrel cage rotor

Product line : W22 NEMA Premium - Ball Bearings

Catalog Number : 05012ET3E365TC-W22

List Price : \$8,960

Notes:

Performed by:

Checked:



No.:

Date: 19-DEC-2012

DATA SHEET

Three-phase induction motor - Squirrel cage rotor

Customer :
Product line : W22 NEMA Premium - Ball Bearings

Frame : 364/5T
Output : 50 HP
Frequency : 60 Hz
Poles : 6
Full load speed : 1180
Slip : 1.67 %
Voltage : 208-230/460 V
Rated current : 127-115/57.4 A
Locked rotor current : 735/367 A
Locked rotor current (I_L/I_n) : 6.4
No-load current : 40.0/20.0 A
Full load torque : 220 lb.ft
Locked rotor torque : 200 %
Breakdown torque : 240 %
Design : B
Insulation class : F
Temperature rise : 80 K
Locked rotor time : 18 s (hot)
Service factor : 1.25
Duty cycle : S1
Ambient temperature : -20°C - +40°C
Altitude : 1000
Degree of Protection : IP55
Approximate weight : 869 lb
Moment of inertia : 32.391 sq.ft.lb
Noise level : 66 dB(A)

| | D.E. | N.D.E. | Load | Power factor | Efficiency (%) |
|---------------------|---------|---------|------|--------------|----------------|
| Bearings | 6314 C3 | 6314 C3 | 100% | 0.86 | 94.1 |
| Regreasing interval | 17000 h | 17000 h | 75% | 0.83 | 94.1 |
| Grease amount | 27 g | 27 g | 50% | 0.74 | 93.6 |

Notes:

Performed by

Checked

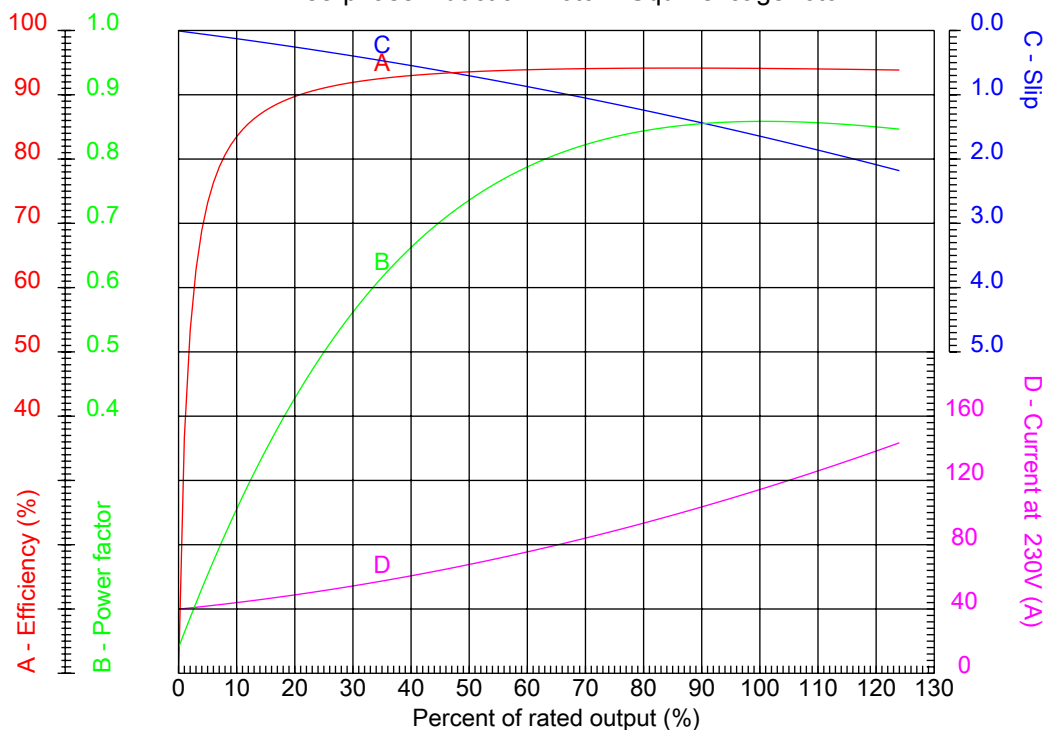


No.:

Date: 19-DEC-2012

PERFORMANCE CURVES RELATED TO RATED OUTPUT

Three-phase induction motor - Squirrel cage rotor



Customer :
 Product line : W22 NEMA Premium - Ball Bearings

| | | | |
|------------------|------------------|--|---------|
| Frame | : 364/5T | Locked rotor current (I _l /I _n) | : 6.4 |
| Output | : 50 HP | Duty cycle | : S1 |
| Frequency | : 60 Hz | Service factor | : 1.25 |
| Full load speed | : 1180 | Design | : B |
| Voltage | : 208-230/460 V | Locked rotor torque | : 200 % |
| Rated current | : 127-115/57.4 A | Breakdown torque | : 240 % |
| Insulation class | : F | | |

Notes:

Performed by

Checked

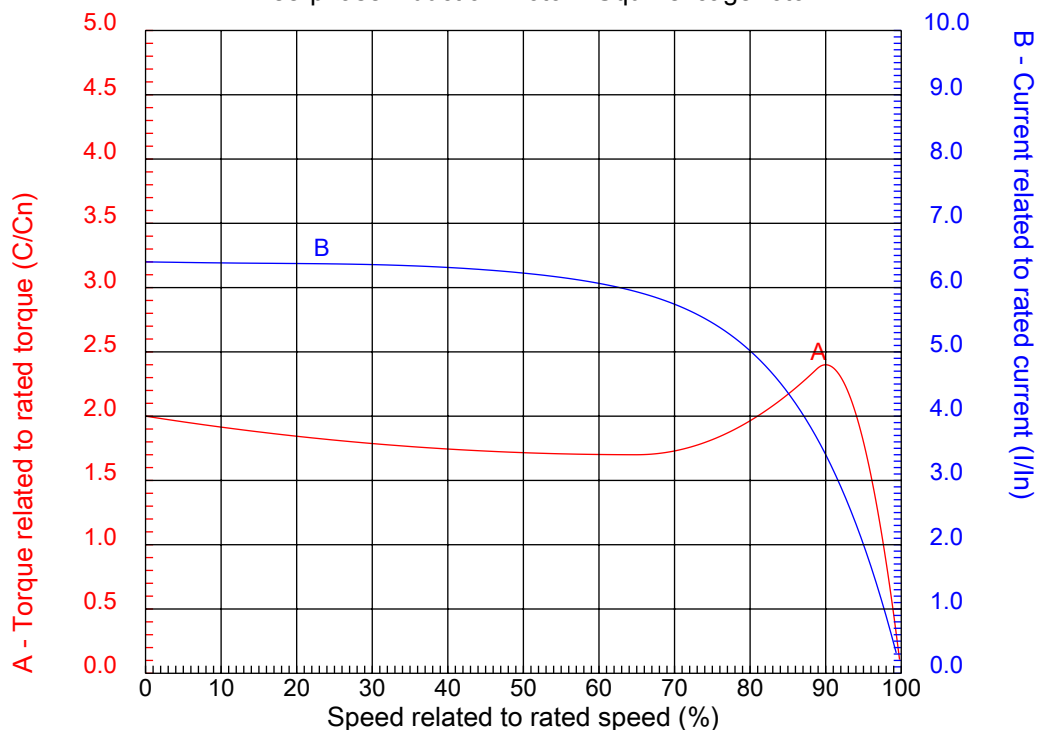


No.:

Date: 19-DEC-2012

CHARACTERISTIC CURVES RELATED TO SPEED

Three-phase induction motor - Squirrel cage rotor



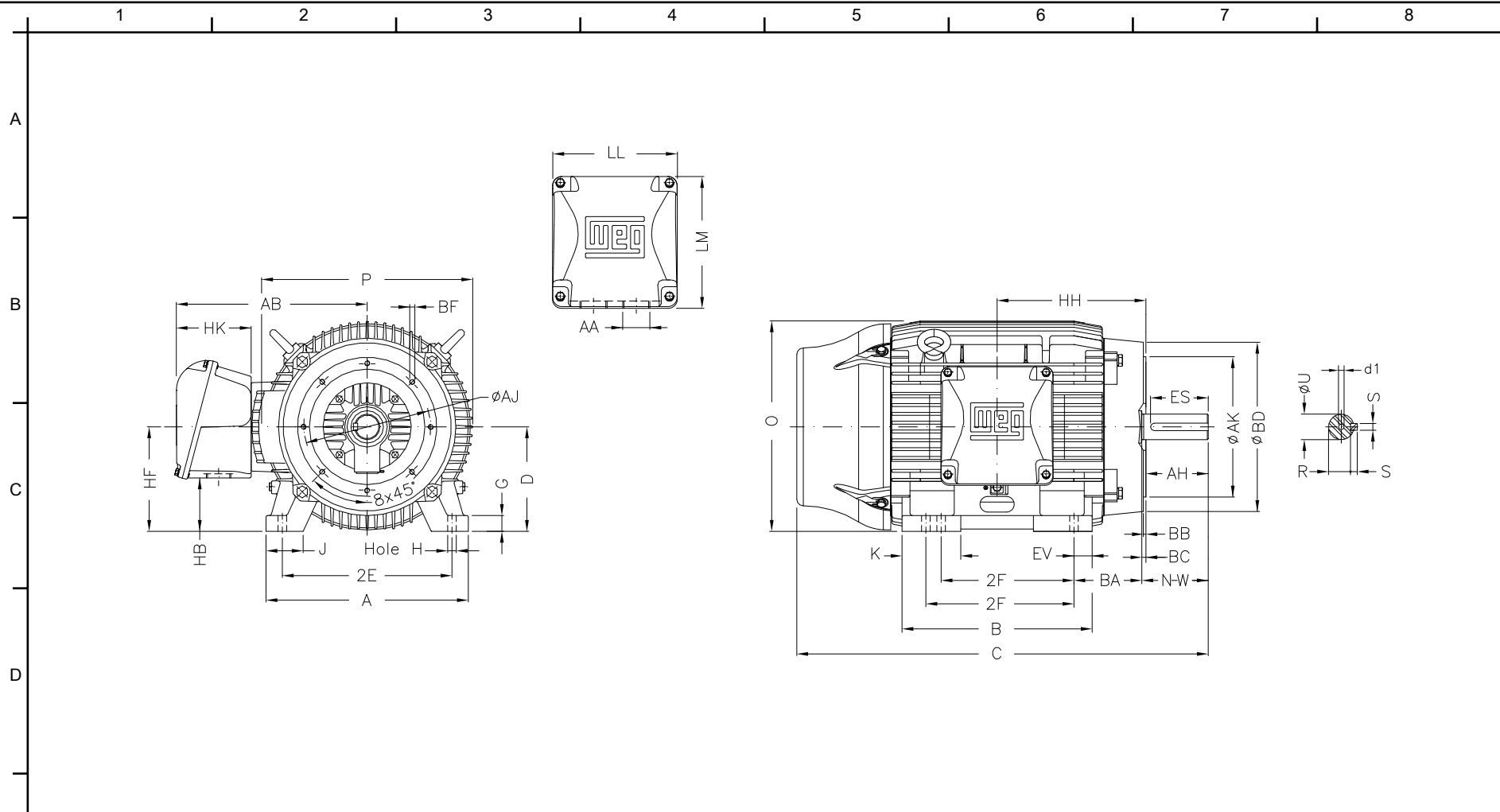
Customer :
Product line : W22 NEMA Premium - Ball Bearings

| | | | |
|------------------|------------------|--|---------|
| Frame | : 364/5T | Locked rotor current (I _l /I _n) | : 6.4 |
| Output | : 50 HP | Duty cycle | : S1 |
| Frequency | : 60 Hz | Service factor | : 1.25 |
| Full load speed | : 1180 | Design | : B |
| Voltage | : 208-230/460 V | Locked rotor torque | : 200 % |
| Rated current | : 127-115/57.4 A | Breakdown torque | : 240 % |
| Insulation class | : F | | |

Notes:

Performed by

Checked



| | | | | | |
|---|---------------------|--------------|--------------|--------------------|--------------------|
| E | 2E 14.016 | J 3.150 | A 17.165 | P 17.914 | AB 16.023 |
| | 2F 11.260/12.244 | K 4.134 | B 15.512 | BA 5.875 | U 2.375 |
| | N-W 5.874 | ES 4.330 | S 0.625 | R 2.019 | depth 0.625 |
| | D 9.000 | G 1.480 | HB 2.992 | O 17.957 | T 6.255 |
| | HD 24.212 | HH 8.346 | HK 6.023 | H 0.660 | C 34.251 |
| F | LL 10.590 | LM 11.181 | AA NPT 3" | d1 DUNC 3/4"-10 | d2 DUNC 3/4"-10 |
| | Flange FC-279 | AJ 11.000 | AK 12.500 | BD 15.55 | BF UNC 5/8"x11 |
| | BB 0.250 | BC 0.250 | AH 5.625 | | |

Notes:

Performed by:

Checked:

Customer:

W22 NEMA Premium - Ball Bearings

| | | |
|--|-------------|--|
| Three-phase induction motor Frame 364/5T - IP55 | 19-DEC-2012 | |
|--|-------------|--|