

## MP10 Assembly Instructions

- Cordless drill with Phillips bit (or standard Phillips screwdriver)
- Rubber hammer
- Scissors or utility knife.

### Recommended Tools



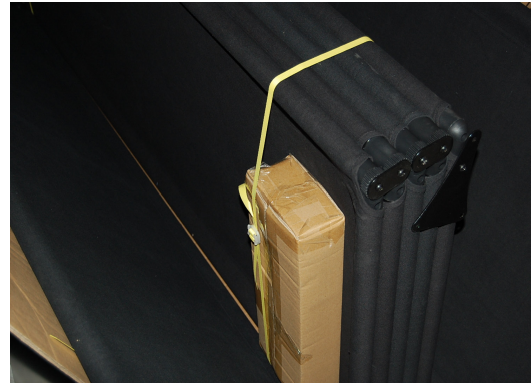
Step #2: Cut away first and last panel as shown. Do not cut the strap holding the partition assembly.



Step #4 Remove Casters from box, install as shown in steps 5-7.



Step #1 Remove the Partition from the box.



Step #3: Remove box containing hardware and casters.



Step #5 Add casters to the bottom of the first and last panel as shown. PortablePartitions logo denotes the top of the panel.

## MP10 Assembly Instructions



Step #6: Gently tap caster into position, set first and last panel aside.



Step #7: Gently tap in remaining casters into partition assembly as shown.



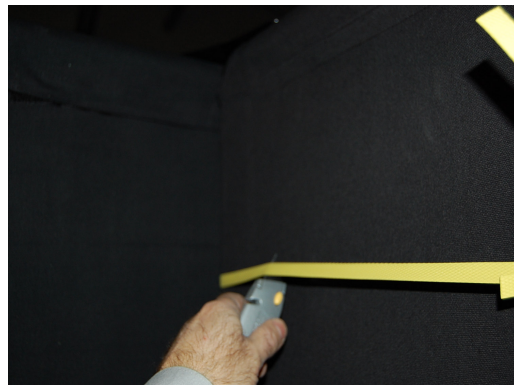
Step #8: Remove steel plate from partition assembly.



Step #9: Reattach steel plate as shown. Two on top, and two on bottom.



Step #10: Attach first and last panel to steel plate as shown.



Step #11: Stand partition on its wheels, then cut the plastic banding.