



VESTIL MANUFACTURING CORP.

2999 North Wayne Street, P.O. Box 507, Angola, IN 46703

Telephone: (260) 665-7586 -or- Toll Free (800) 348-0868

Fax: (260) 665-1339

www.vestilmfg.com e-mail: sales@vestil.com

PEL-88-A-SWA & PEL-100-A-SWA Wrapping Machines Use and Maintenance Manual



Receiving instructions:

After delivery, IMMEDIATELY remove the packaging from the product in a manner that preserves the packaging and maintains the orientation of the product in the packaging; then inspect the product closely to determine whether it sustained damage during transport. **If damage is discovered during the inspection, immediately record a complete description of the damage on the bill of lading.** If the product is undamaged, discard the packaging.

NOTES:

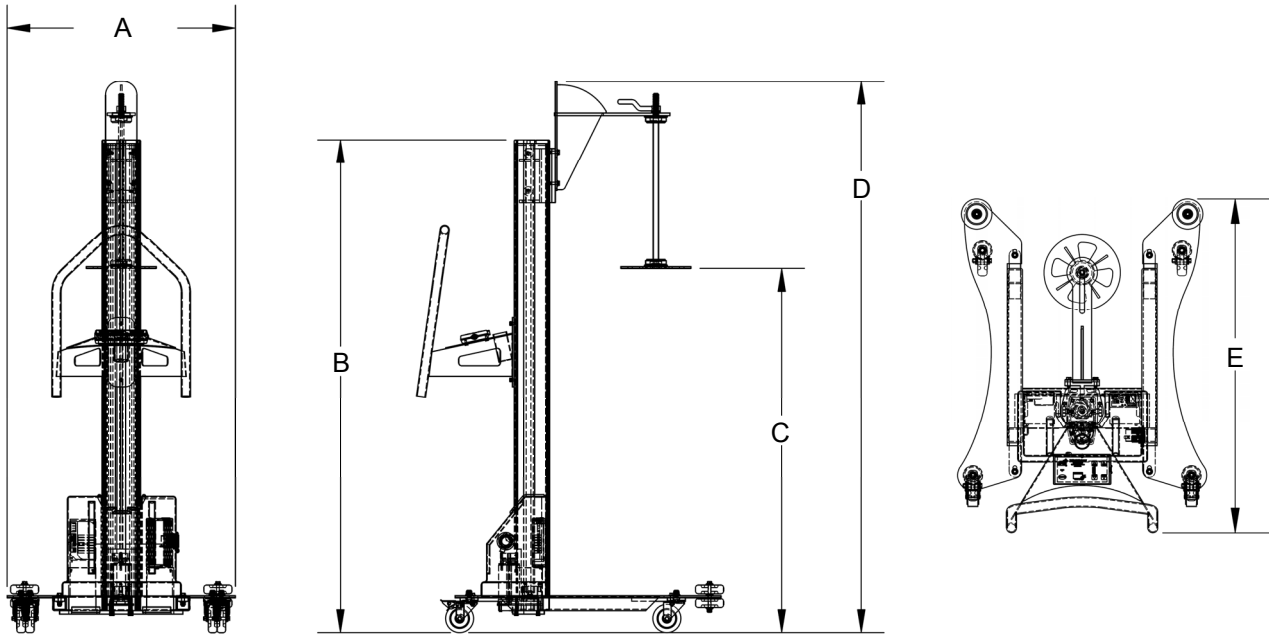
- 1) Compliance with laws, regulations, codes, and non-voluntary standards enforced in the location where the product is used is exclusively the responsibility of the owner/end-user
- 2) VESTIL is **not liable** for any injury or property damage that occurs as a consequence of failing to apply either:
 - a) Instructions in this manual; or b) information provided on labels affixed to the product. Neither is Vestil responsible for any consequential damages sustained as a result of failing to exercise sound judgment while assembling, installing, using or maintaining this product.

Table of Contents

Product Specifications.....	2
Signal Words.....	2
Safe Use Recommendations.....	3
FIG. 1: PEL-88-A-SWA exploded parts diagram & bill of materials.....	4-5
FIG. 2: Electrical system circuit diagram.....	5
FIG. 3: PEL-100-A-SWA exploded parts diagram & bill of materials.....	6-7
Loading Stretch Wrap.....	8
Operation Instructions.....	8
System Power.....	9
Inspections & Maintenance.....	9
Troubleshooting Guide.....	10
Labeling Diagram.....	10

Product specifications:

Dimensions and other product specifications appear in the diagrams and table below.



Model	A	B	C	D	E	Net weight
PEL-88-A-SWA	32 ⁵ / ₈ in.	70 ³ / ₈ in.	52 in.	78 ³ / ₄ in.	43 ⁷ / ₈ in.	210.1 lb. 95.5 kg
PEL-100-A-SWA	32 ⁵ / ₈ in.	85 ¹ / ₈ in.	67 in.	93 ⁹ / ₁₆ in.	43 ⁷ / ₈ in.	217.0 lb. 98.7 kg

SIGNAL WORDS:

This manual uses SIGNAL WORDS to indicate the likelihood of personal injuries, as well as the probable seriousness of those injuries, if the product is misused in the ways described. Other signal words call attention to uses of the product likely cause property damage. The signal words used appear below along with the meaning of each word:



DANGER

Identifies a hazardous situation which, if not avoided, WILL result in DEATH or SERIOUS INJURY. Use of this signal word is limited to the most extreme situations.



WARNING

Identifies a hazardous situation which, if not avoided, COULD result in DEATH or SERIOUS INJURY.



CAUTION

Indicates a hazardous situation which, if not avoided, COULD result in MINOR or MODERATE injury.



NOTICE

Identifies practices likely to result in product/property damage, such as operation that might damage the product.

Each person who assembles, installs, uses, or maintains this product should read the entire manual in advance and fully understand the directions. If after reading the manual you do not understand an instruction, ask your supervisor or employer for clarification, because failure to adhere to the directions in this manual might result in serious personal injury.

Safe Use Recommendations:

We strive to identify all hazards associated with the use of our products. However, material handling is dangerous and no manual can address every risk. The end-user ultimately is responsible for exercising sound judgment at all times.

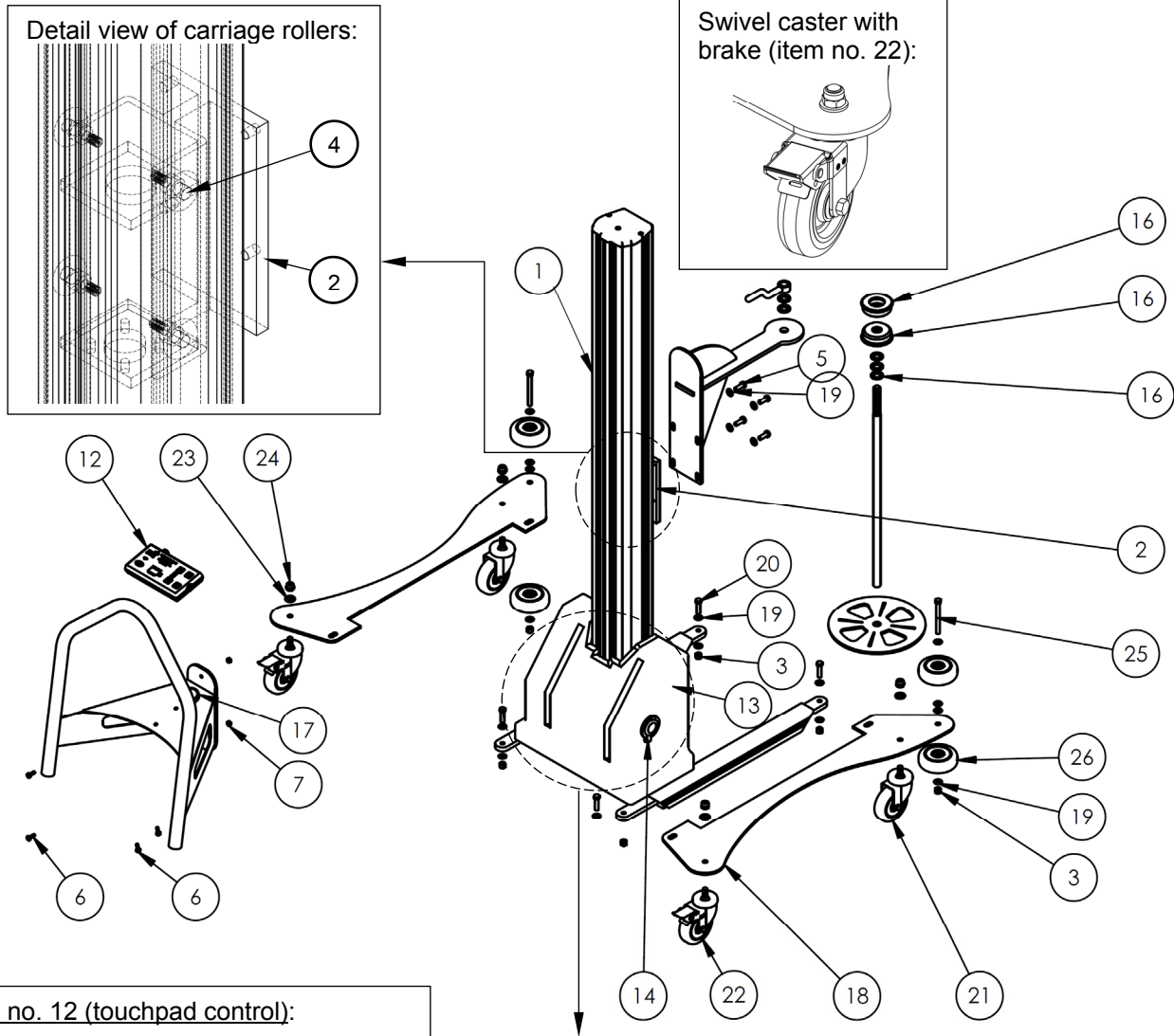
⚠ WARNING Material handling is dangerous. Improper or careless operation of this wrapping machine might result in serious personal injuries.

- ***Failure to read and understand the entire manual before assembling, using or servicing the product constitutes misuse.*** Read the manual whenever necessary to refresh your understanding of proper use and maintenance procedures.
- DO NOT use the wrapping machine unless it is in normal operating condition. Inspect the unit as described in the inspection instructions on p. 9 to determine whether it is functioning normally. DO NOT use the machine unless it passes every part of the inspection or until it is restored to normal operating condition.
- DO NOT use the machine to lift, carry, or transport items or people.
- Always watch the carriage carefully while raising and lowering it.
- This crane is designed for material handling ONLY. DO NOT use the crane to lift people.
- ALWAYS load the wrapping material properly (see “Loading stretch wrap” on p. 8).
- If repairs are necessary, ONLY install manufacturer-approved replacement parts.
- The carriage (see item no. 2 on p. 4 & 6) should elevate and lower smoothly. Watch for binding or jerky movement and listen for unusual noises. Remove the unit from service if you observe anything abnormal.
- DO NOT use this wrapping machine UNLESS all labels are in place & readable (see “Labeling diagram” on p. 11.)
- DO NOT modify this product in any way. Modifying the machine automatically voids the limited warranty and might make it unsafe to use.

NOTICE Proper use and maintenance are essential for this product to function properly.

- Always use this product in accordance with the instructions in this manual.
- Periodically lubricate moving parts.
- Keep the product clean & dry at all times. Always store the unit inside.
- Only use approved replacement parts. To order replacement or spare parts for this equipment, contact the factory.

FIG. 1: PEL-88-A-SWA exploded parts diagram and bill of materials



Item no. 12 (touchpad control):

Vestil Manufacturing Company
Phone (260) 665-7686
Fax (260) 665-1339
Website: www.vestil.com
Made in USA

STATUS
ON / OFF

BATTERY LEVEL
REMAINING CHARGE %

FASTER
RAISE

SLOWER
LOWER

Speed gauge

Status light

Turns power on and off.

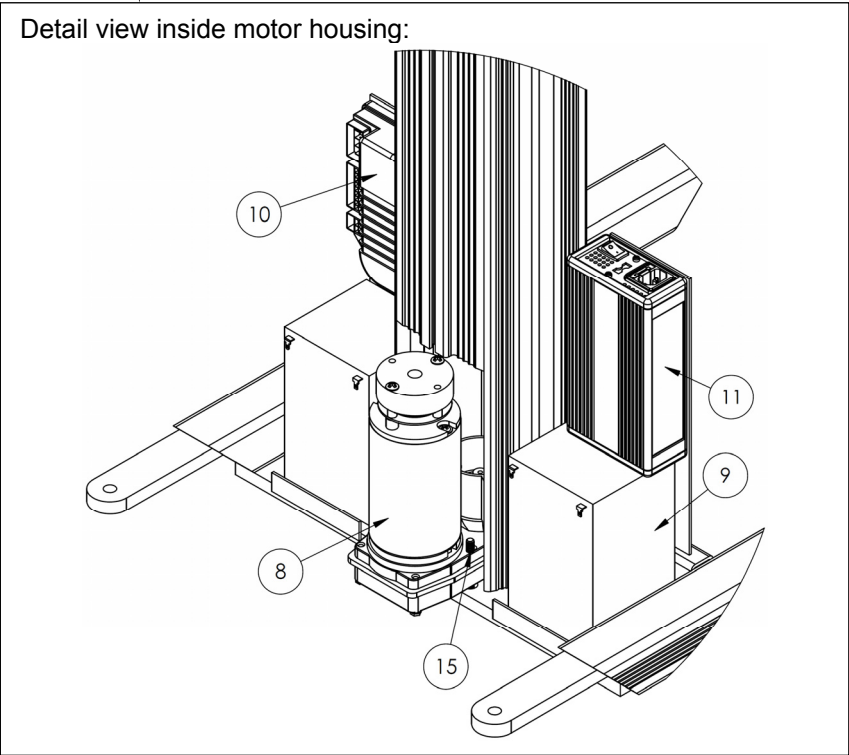
Battery charge meter indicates percent of full charge remaining

FASTER and SLOWER buttons control the speed the carriage travels up and down the mast

These buttons control vertical position of the carriage

Speed gauge indicates current travel speed setting

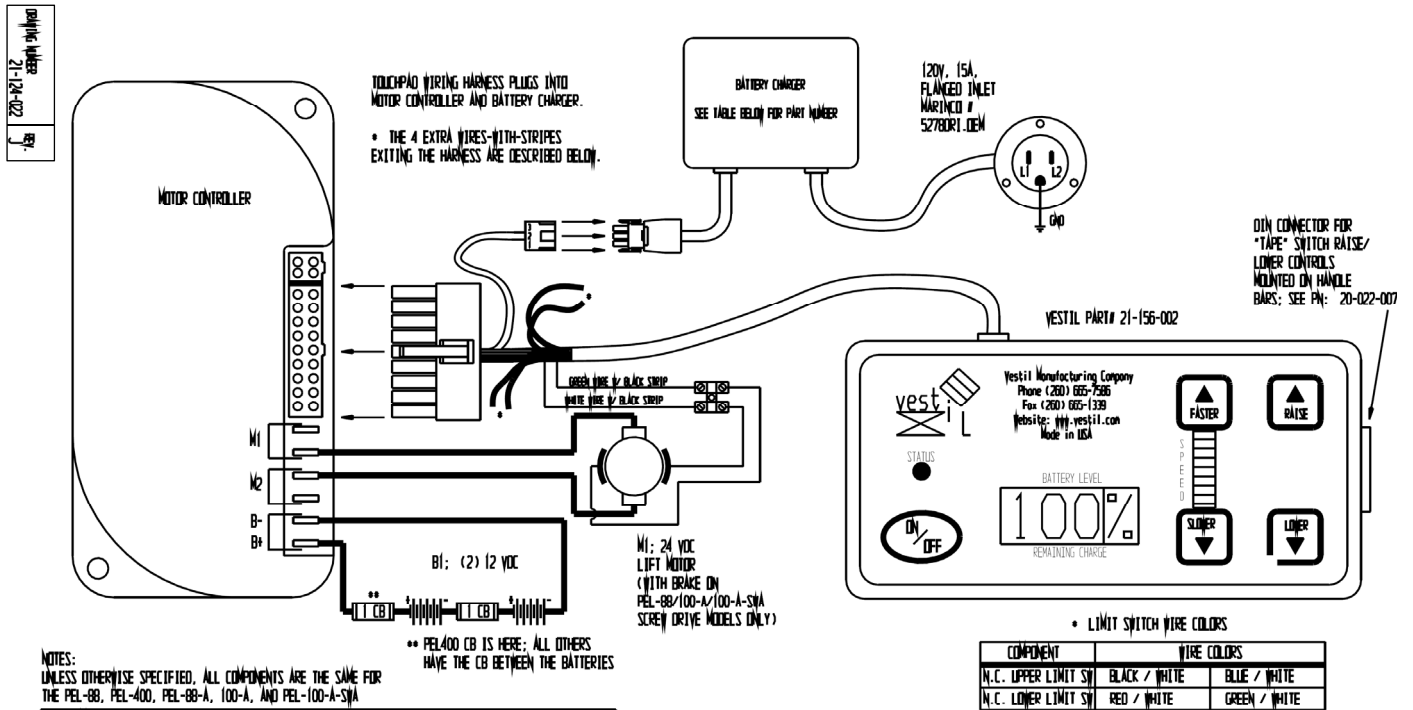
Status light indicates whether power is ON or OFF.



PEL-88-A-SWA Bill of Materials:

Item no.	Part no.	Description	Quantity	Item no.	Part no.	Description	Quantity
1	42-514-002	Weldment, frame (upright portion = "mast")	1	14	21-034-025	Flanged inlet sleeve with locking ring	1
2	42-538-001	Weldment, carriage	1	15	11012	1/4in. - 20 x 2 1/4in. HHCS #2 zinc-plated bolt	4
3	37024	3/8in. Nylock insert nut	6	16	20-538-002	Assembly, carriage, stretch wrap carrier	1
4	20-110-008	Roller bearings	4	17	20-525-001	Weldment, handle	1
5	11105	3/8in. - 16 x 1in. hex head bolt	4	18	20-016-076	Bracket, roller	2
6	11003	1/4in. - 20 x 3/4in. hex head bolt	4	19	33008	3/8in. flat washer	20
7	37018	1/4in. - 20 lock nut	2	20	11109	3/8in. - 16 x 1 1/2in. HHCS #2 zinc-plated bolt	4
8	21-135-001	Motor	1	21	16-132-155	Caster, swivel, stem, HR-4/1.25-SLB-S	2
9	21-139-001	12V battery	2	22	16-132-156	Caster, swivel, with brake, HR-4-1.25-SLB-S	2
10	21-156-006	Accessories, Electrical control box, Curtis 1210-2401	1	23	33011	1/2in. flat washer	4
11	21-034-010	24V battery charger	1	24	37030	1/2in. - 13 Nylock nut	4
12	21-156-002	Electronic touchpad control	1	25	11119	3/8in. - 16 x 4in. HHCS #2 zinc-plated hex head bolt	2
13	21-024-042	Motor cover	1	26	16-132-009	PP-4/1.25-W	4

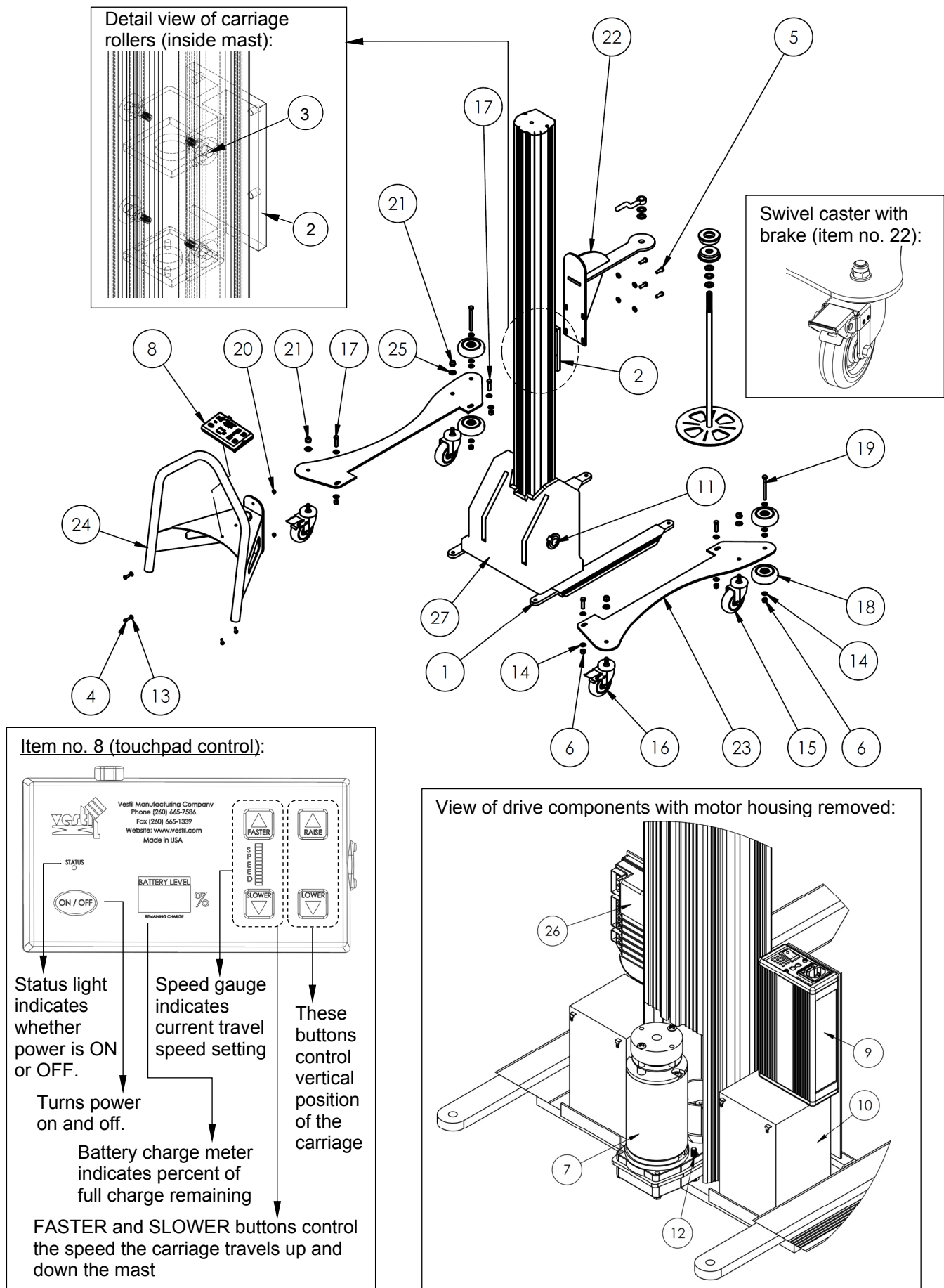
FIG. 2: Electrical system circuit diagram



NOTES:
UNLESS OTHERWISE SPECIFIED, ALL COMPONENTS ARE THE SAME FOR THE PEL-88, PEL-400, PEL-88-A, 100-A, AND PEL-100-A-SWA

COMPONENT	PEL 88, 100	PEL 88 A, 100 A	PEL 400	PEL-100-A-SWA
MOTOR	21-641-005	21-141-004, -005	15250051	21-141-005
BATTERIES: BI	21-139-001	21-139-001	21-139-002	21-139-002
I CB	21-034-006	21-034-006	21-034-004	21-034-004
CHARGER	21-034-010	21-034-010	21-034-010	21-034-010
I/S: ROLLER ARM	NONE	OPTIONAL	01-022-001	NONE
MOTOR CONTROLLER	21-156-006	21-156-006	21-156-004	21-156-006
PART NO.	21-124-022	21-124-040	21-124-023	21-124-041

FIG. 3: PEL-100-A-SWA exploded parts diagram (bill of materials on following page)

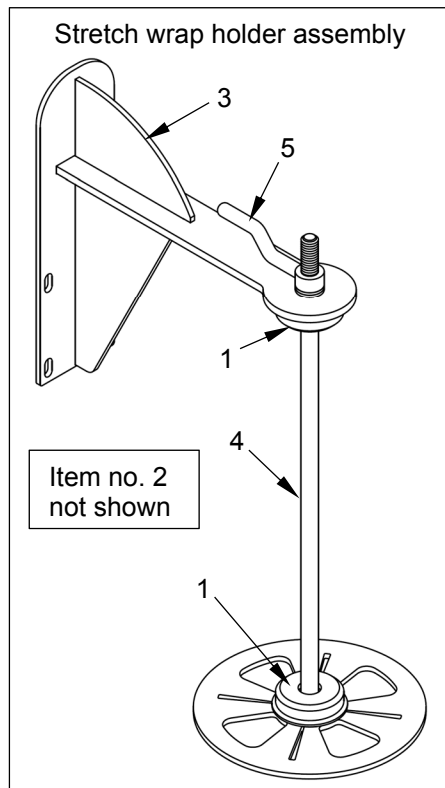


PEL-100-A-SWA Bill of Materials:

Item no.	Part no.	Description	Quantity	Item no.	Part no.	Description	Quantity
1	42-514-003	Weldment, frame (upright portion = "mast")	1	14	33008	³ / ₈ in. flat washer	20
2	42-538-001	Weldment, carriage	1	15	16-132-155	Caster, swivel, stem, HR-4/1.25-SLB-S	2
3	20-110-008	Roller bearings	4	16	16-132-156	Caster, swivel, with brake, HR-4-1.25-SLB-S	2
4	11003	¹ / ₄ in. – 20 x ³ / ₄ in. hex head bolt	4	17	11109	³ / ₈ in. – 16 x 1 ¹ / ₂ in. HHCS #2 zinc-plated bolt	4
5	11105	³ / ₈ in. – 16 x 1in. hex head bolt	4	18	16-132-009	PP-4/1.25-W	4
6	37024	³ / ₈ in. Nylock insert nut	6	19	11119	³ / ₈ in. – 16 x 4in. HHCS #2 zinc-plated hex head bolt	2
7	21-135-001	Motor	1	20	37018	¹ / ₄ in. – 20 lock nut	2
8	21-156-002	Electronic touchpad control	1	21	37030	¹ / ₂ in. – 13 Nylock nut	4
9	21-034-010	24V battery charger	1	22	20-538-002	Assembly, carriage, stretch wrap carrier	1
10	21-139-001	12V battery	2	23	20-016-076	Bracket, roller	2
11	21-034-025	Flanged inlet sleeve with locking ring	1	24	20-525-001	Weldment, handle	1
12	11012	¹ / ₄ in. – 20 x 2 ¹ / ₄ in. HHCS #2 zinc-plated bolt	4	25	33011	¹ / ₂ in. flat washer	4
13	33004	¹ / ₄ in. type A narrow flat washer	2	26	21-156-006	Accessories, Electrical control box, Curtis 1210-2401	1
				27	21-024-042	Motor cover	1

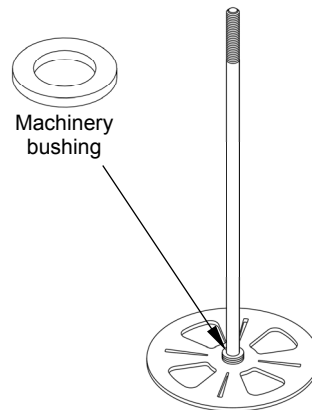
Loading Stretch Wrap:

The stretch wrap holder is easily disassembled and reassembled to facilitate rapid loading of new rolls and removal of empty rolls. To assemble the stretch wrap holder, follow steps 1-5 below. The holder will accommodate rolls of wrapping material up to 20in. long. [NOTE: Numbers in parentheses () in steps 1-5 below correspond to item numbers.]

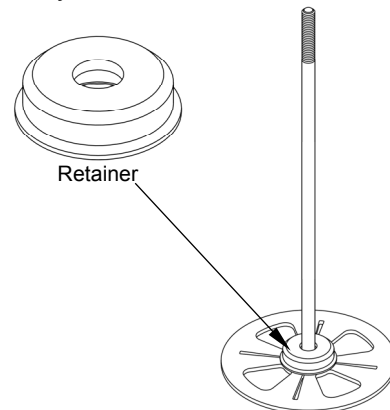


Item no.	Part no.	Description	Quantity
1	20-014-006	Wrap retainer	2
2	33426	$\frac{3}{4}$ " - 10ga. machinery bushing	5
3	20-538-001	Carriage weldment	1
4	20-538-003	Threaded spindle	1
5	20-145-008	Spindle handle	1

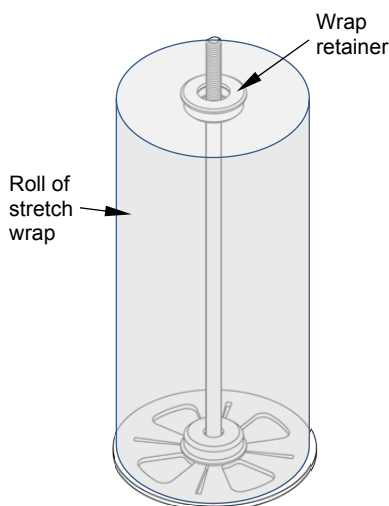
Step 1: Slide 3 machinery bushings (2) onto the shaft of the spindle (4).



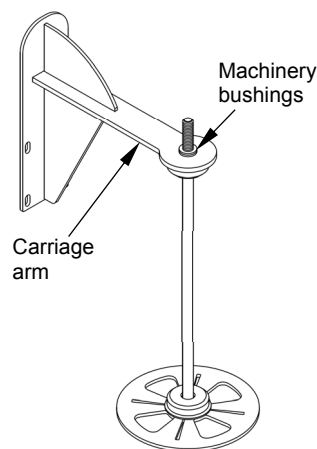
Step 2: Install a wrap retainer (1). The bushings installed in step 1 will fit inside a cavity in the underside of the retainer.



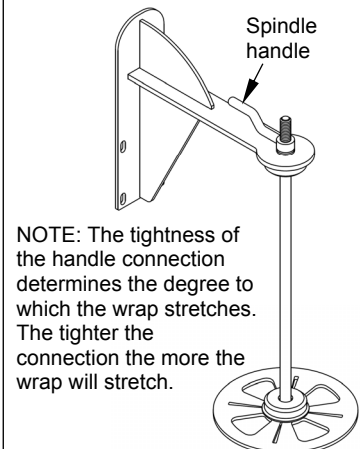
Step 3: Install a roll of stretch wrap; then install the other retainer.



Step 4: Insert the threaded end of the spindle through the hole in the end of the carriage arm; then slide 2 more machine bushings onto the spindle.



Step 4: Wind the spindle handle onto the end of the spindle and tighten it against the bushings.



Operation:

This product is not self-propelled. To move the unit, lower the carriage; then push it carefully to the work location.

Vertical travel of the carriage is controlled electronically via the touchpad (see item no. 12 on p. 4). Use the RAISE and LOWER buttons to adjust the vertical position of the carriage as the application requires.

The travel speed of the carriage is adjustable. Press the FASTER button to increase travel speed, or press the SLOWER button to decrease speed. The SPEED gauge between the buttons indicates the current speed setting.

To wrap an object, attach the free end of the wrap to it. Push the wrapping machine around the object to dispense wrap. When the wrapping process is finished, cut the wrap (for example with a utility knife). Lower the carriage and move the unit to its storage location. Apply the caster brakes (see FIG).

Store the wrapping machine in a dry, indoor location to protect the electronic components.

System power:

Power is supplied by two 12V batteries. Both batteries are completely sealed and are therefore maintenance free.

To recharge the batteries, every wrapping machine includes a 24V charger. The charger operates on 115 VAC and requires a 3-prong (grounded) extension cord. The charger monitors and reacts to the battery voltage during the recharging process. When the batteries are fully charged, a green LED on the bottom of the charger turns on (see diagrams to the right). The battery charge gauge (see "Touchpad control" on p. 6) displays the amount of battery charge remaining as a percentage of full (100%) charge. To determine the true level of charge, wait at least 1/2 hour after turning off the charger. If the voltage is 12.65V or more, then the batteries are fully charged.

Charge the batteries for at least 4 hours before using the wrapping machine for the first time.

How frequently the batteries require charging depends on the load applied to the batteries (i.e. how many times the carriage is moved and how quickly—faster speed will drain the battery more rapidly) and the duration and frequency of use. Experience will dictate when the batteries should be charged.

Whenever recharging is begun, it should continue until the batteries are fully charged. Do not interrupt the charging cycle. Fully charging the batteries every time recharging is undertaken maximizes battery life.

Recommendations regarding battery charging: 1) Recharge the batteries *at least* once every 2 weeks; 2) Leave the charger plugged in when the unit is not in use (the battery charger can remain connected to the batteries for long periods without causing damage to the batteries); 3) Disconnect the batteries when the unit will be unused for 1 month or longer; 4) ALWAYS keep the wrapping machine dry.

Inspections & Maintenance:

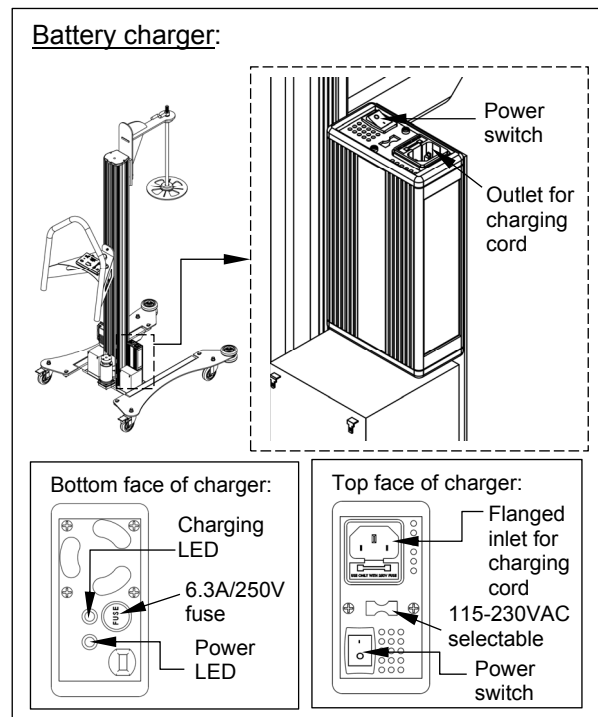
If any of the inspections described below reveal problems, tag the unit "Out of Service". Restore the machine to normal operating condition BEFORE using it again.

A. Before each use, inspect the following components. Each component must be in normal operating condition. To establish normal operating condition, make a thorough record of the appearance, sound, and function of the various parts of the wrapping machine when you first receive it. Compare later observations to the record to determine whether the machine is in normal operating condition.

1. Frame: examine the frame, roller brackets, and handle weldment. Look for damaged welds, warps, cracks, or other deformations.
2. Casters: examine each caster. Confirm that casters are not severely worn, swivel freely, and that the brakes firmly engage the wheels.
3. Carriage mechanism: cycle the carriage by raising it to the top of the mast and then lowering it completely. The carriage should move smoothly and at a uniform rate up-and-down the mast. Watch for binding and listen for unusual sounds.
4. Fasteners: check bolts and nuts. Make sure all fasteners are tightly connected.
5. Roller bearings: look inside the channel of the mast and examine the roller bearings of the carriage (see FIGS. 1 and 3). Clean the interior of the mast to remove debris that might interfere with the rollers.

B. At least once per month:

1. Wiring: inspect the electrical system and look for loose connections and damage.
2. Clean the machine: remove dirt and other matter from all surfaces.
3. Labels: refer to the "Labeling Diagram" on p. 10. Make sure that all labels are in place and readable.
4. Batteries: remove corrosion from the posts if present.



Troubleshooting guide:

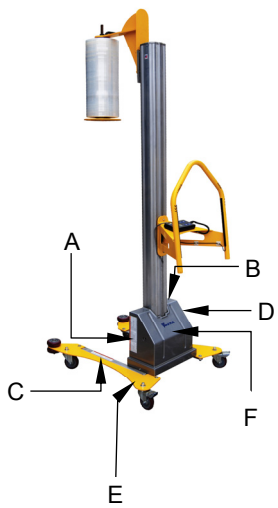
The following table describes the most common issues that occur with these wrapping machines. If your unit experiences a problem not included in this guide, contact the factory for assistance.

NOTE: The touchpad is not serviceable. DO NOT open the touchpad or attempt to correct a problem you believe might be caused by a touchpad malfunction. Doing so voids the Limited Warranty (see p. 11). Contact the factory to discuss all problems related to the touchpad.

Issue:	Explanation	Remedy
1) I press the UP or DOWN button on the touchpad but nothing happens.	a. Battery voltage too low. LED flashes: ● ●●●● b. Faulty wiring, e.g. broken wire in circuit. c. If using optional hand control, plug loose in touchpad socket. d. Problem with motor or control. e. Battery charger still plugged into wall socket. f. Circuit breaker or fuse blown.	a. Charge battery. b. Inspect wiring. Perform circuit continuity checks with meter (see FIG. 2 on p. 5). c. Unplug hand control and reinsert plug into socket on touchpad. d. See "Motor controller Diagnostics". e. Unplug charger. f. Reset circuit breaker or replace fuse.
2) I press UP or DOWN and can hear the motor humming, but the carriage does not move.	g. Battery voltage is low. h. Load applied to carriage too heavy.	g. Charge battery. h. Reduce load.
3) Carriage stops moving before it reaches fully raised or fully lowered position.	i. Battery voltage is low. j. Roller bearings obstructed or binding. k. Load applied to carriage too heavy.	i. Charge battery. j. Inspect roller track for debris or objects interfering with rollers. k. Examine carriage; reduce load.
4) Touchpad does not respond to any input. LED flashes: ● ●	l. Motor temperature either exceeds (>92°C) or below (-25°C) threshold operating temperature.	l. Check load applied to carriage. Reduce, if necessary. Cease use to allow motor to cool. Increase ambient temperature.
5) Touchpad does not respond to any input. LED flashes: ● ●● or ●●●● or ●●●●●●	m. Throttle input wire open or shorted. n. Throttle pot defective.	m. Check wiring. Confirm all connections are sound. n. Contact factory.
6) Touchpad does not respond to any input. LED flashes: ● ●●●	o. Speed limit pot wires broken or shorted. p. Broken speed limit potentiometer.	o. Check wiring. Confirm all connections are sound. p. Contact factory.
7) Touchpad does not respond to any input. LED flashes: ●●●●●●	q. Controller failure; low battery voltage.	q. Replace battery.
8) Touchpad does not respond to any input. LED flashes: ●●●●●●	r. Short in motor or in motor wiring. s. Controller failure.	r. Check wiring. Confirm all connections are sound. s. Contact factory.

Labeling diagram:

The unit should always be labeled as shown in the diagram below. Replace all labels that become damaged or unreadable.



A: Label 527

⚠ WARNING
Only trained, authorized persons should operate this device. Improper operation might result in serious personal injuries sustained by the truck operator and/or bystanders. Operators must observe the following safety-enhancing practices:

- **BEFORE** operating, inspect mast, carriage, forks/deck, cable/chain, wheels, and brakes for damage. **DO NOT** use if damaged.
- **ALWAYS** walk travel path before using truck to identify hazards:
 - **DO NOT** contact electrical lines or overhead objects with device or load;
 - **DO NOT** travel up/down inclines if an alternate route is available;
 - **DO NOT** travel over debris.
- **ONLY** travel with forks/deck in lowest position appropriate for conditions.
- **ALWAYS** center and evenly distribute loads on forks/deck.
- **ALWAYS** secure load to forks/deck.
- **ONLY** drive or operate truck functions from operator position.
- **DO NOT** exceed maximum rated load (capacity).
- **DO NOT** allow people to ride on device.
- **DO NOT** lift loads over people. **DO NOT** permit people to walk beneath the forks/deck when raised (loaded or unloaded).
- **DO NOT** leave unattended UNTIL fully lowered AND unloaded.
- **DO NOT** modify device in any way.

⚠ ADVERTENCIA
Solo personas entrenadas y autorizadas deben operar este equipo. La operación inadecuada podría resultar en daños serios al operario del camión y/o a los transeúntes. Los operarios deben observar y seguir las siguientes prácticas de seguridad:

- **ANTES** de usar, inspeccione el mástil, el equipo, las horquillas/plataforma, cables/cadenas, ruedas y frenos por daños. **NO** use si se observan daños.
- **SIEMPRE** camine el trayecto de viaje antes de usar el camión para identificar riesgos:
 - **NO** toque las líneas eléctricas u objetos altos con el dispositivo o la carga;
 - **NO** viaje en inclinaciones de subida y bajada si hay otra ruta alternativa;
 - **NO** viaje sobre desechos.
- **SOLO** viaje con las horquillas/plataforma en la posición de descenso más apropiada para las condiciones.
- **SIEMPRE** centre y distribuya las cargas uniformemente en las horquillas/plataforma
- **SIEMPRE** asegure la carga a las horquillas/plataforma
- **SOLO** conduzca u opere las funciones del camión desde la posición del operario.
- **NO** exceda la capacidad máxima tasada de carga.
- **NO** permita que la gente viaje en el equipo.
- **NO** eleve las cargas sobre la gente; **NO** permita que la gente camine debajo de las horquillas/plataforma cuando este elevada (con carga o sin carga).
- **NO** deje el equipo desatendido **HASTA** que este completamente cargado y descargado.
- **NO** modifique el equipo de ninguna manera.

527-Rev 1109

B: Label 287

MODEL/MODELO/MODELE _____ lbs.
 STATIC CAPACITY (evenly distributed) _____ kgs.
 LA CAPACIDAD CONSTANTE (distribuida uniformemente) _____ kgs.
 CAPACITÉ STATIQUE (distribuée régulièrement) _____ kgs.
 SERIAL/SERIE/SÉRIE _____
 287 REV 012

C: Label 208

⚠ WARNING **⚠ ADVERTENCIA** **⚠ AVERTISSEMENT**
 KEEP CLEAR OF PINCH POINT MANTENGASE ALEJADO DEL PUNTO DE CORTE SE TENIR À DISTANCE DU POINT DE PINCEMENT

D: Label 454

Charge unit at least every two weeks or leave plugged in when not in use. Disconnect battery when storing unit without power for more than one month.

Cargue la unidad por lo menos cada dos semanas o enchupelo cuando no en uso. Desconecte la batería al salvar la unidad sin carga por más de un mes.

Charger l'unité au moins deux fois par semaine ou laissez branché lorsque la batterie lorsque l'unité est rangée et ne va pas fonctionner pendant plus d'un mois.

VESTIL MANUFACTURING CORP • Angola, IN 46703 USA
 Phone (260) 665-7586 • Fax (260) 665-1339 • www.vestil.com 454

E: Label 212

⚠ WARNING **⚠ ADVERTENCIA** **⚠ AVERTISSEMENT**
 LOCK CASTER and/or FLOOR LOCK when loading and unloading LA RUEDICILLA de la CERRADURA y/o el PISO CIERRAN al cargar y descargar LOCK CASTER et/ou SOL LOCK lors du chargement et de déchargement

F: Label 399 (inside housing)

PEL BATTERY CONNECTIONS
 The red wire (from T1 on the motor controller) connects to one side of the circuit breaker. The other side of the circuit breaker connects to the positive (+) post (red) on BAT1. The short jumper wire connects between the BAT1 negative (-) post (black) and BAT2 positive (+) post (red). The unused black wire (from T2 on the controller) connects to the negative (-) post (black) on BAT2. The charger plugs into the quick-connect harness located on the end of the touchpad harness.

CONEXIONES DE LA BATERIA PEL
 El alambre rojo (del T1 en el control del motor) se conecta a un lado del corte circuito. El otro lado del corte circuito se conecta al poste (rojo) positivo (+) en BAT1. El alambre de salto corto se conecta entre el poste (negro) BAT1 negativo (-) y el poste (rojo) BAT2 positivo (+). El alambre negro sin usar (del T2 en el control) se conecta al poste (negro) negativo (-) en el BAT2. El cargador se enchufa en el equipo de conexión rápida localizado en el extremo del equipo del teclado.

CONNECTIONS DE BATTERIE PEL
 Le fil rouge (de T1 sur le contrôleur du moteur) connecte à un côté du disjoncteur. L'autre côté du disjoncteur connecte à l'anode (borne positive) - rouge - de BAT1. Le fil de liaison court connecte entre la borne (noir) négative (-) de la borne négative (noir) de BAT2. Le chargeur se enchâsse dans le dispositif de connexion rapide situé sur le bout de la touche à affichage.

VESTIL MANUFACTURING CORPORATION
 Angola, Indiana USA
 Phone (260) 665-7586 • www.vestil.com 399
 Revision 1003

LIMITED WARRANTY

Vestil Manufacturing Corporation (“Vestil”) warrants this product to be free of defects in material and workmanship during the warranty period. Our warranty obligation is to provide a replacement for a defective original part if the part is covered by the warranty, after we receive a proper request from the warrantee (you) for warranty service.

Who may request service?

Only a warrantee may request service. *You are a warrantee if* you purchased the product from Vestil or from an authorized distributor AND Vestil has been fully paid.

What is an “original part”?

An original part is a part used to make the product as shipped to the warrantee.

What is a “proper request”?

A request for warranty service is proper if Vestil receives: 1) a photocopy of the Customer Invoice that displays the shipping date; AND 2) a written request for warranty service including your name and phone number. Send requests by any of the following methods:

<u>Mail</u>	<u>Fax</u>	<u>Email</u>
Vestil Manufacturing Corporation 2999 North Wayne Street, PO Box 507 Angola, IN 46703	(260) 665-1339 <u>Phone</u> (260) 665-7586	sales@vestil.com

In the written request, list the parts believed to be defective and include the address where replacements should be delivered.

What is covered under the warranty?

After Vestil receives your request for warranty service, an authorized representative will contact you to determine whether your claim is covered by the warranty. Before providing warranty service, Vestil may require you to send the entire product, or just the defective part or parts, to its facility in Angola, IN. The warranty covers defects in the following *original* dynamic components: motors, hydraulic pumps, electronic controllers, switches and cylinders. It also covers defects in *original* parts that wear under normal usage conditions (“wearing parts”), such as bearings, hoses, wheels, seals, brushes, and batteries.

How long is the warranty period?

The warranty period for original dynamic components is 1 year. For wearing parts, the warranty period is 90 days. The warranty periods begin on the date when Vestil ships the product to the warrantee. If the product was purchased from an authorized distributor, the periods begin when the distributor ships the product. Vestil may, at its sole discretion, extend the warranty periods for products shipped from authorized distributors by *up to* 30 days to account for shipping time.

If a defective part is covered by the warranty, what will Vestil do to correct the problem?

Vestil will provide an appropriate replacement for any *covered* part. An authorized representative of Vestil will contact you to discuss your claim.

What is not covered by the warranty?

1. Labor;
2. Freight;
3. Occurrence of any of the following, which automatically voids the warranty:
 - Product misuse;
 - Negligent operation or repair;
 - Corrosion or use in corrosive environments;
 - Inadequate or improper maintenance;
 - Damage sustained during shipping;
 - Collisions or other incidental contacts causing damage to the product;
 - Unauthorized modifications: DO NOT modify the product IN ANY WAY without first receiving written authorization from Vestil. Modification(s) might make the product unsafe to use or might cause excessive and/or abnormal wear.

Do any other warranties apply to the product?

Vestil Manufacturing Corp. makes no other express warranties. All implied warranties are disclaimed to the extent allowed by law. Any implied warranty not disclaimed is limited in scope to the terms of this Limited Warranty.

