



Instruction Manual

Forklift Maintenance Platform

Part Number: 272571
(Optional Caster Set: Part Number 272572)



Note: Operator MUST read and understand these operating instructions before using this Forklift Maintenance Platform.

1. GENERAL INFORMATION

1.1 DESCRIPTION

Thank you for purchasing a Wesco Foldable Maintenance Platform. This platform is specially designed to mate with a forklift according to requirements of OSHA and ANSI. It ensures your safety with multiple safeguards which must be used in accordance with this manual.

1.2 SPECIFICATIONS

Part Number	272571
Capacity	600 lbs
Weight	220 lbs
Platform Deck	37" x 37" ID
Fork Pockets	7.75" W x 3.5" H, Centers 26"
Overall Width	21"
Overall Length	51"
Overall Height	48.25"
Optional Casters (P/N 272572)	
Casters Size	4" x 1.5" , Moldon Polyurethane
Caster Type	4 Swivel Casters (2 Locking)

Materials and specifications are subject to change without notice.

2. INITIAL ASSEMBLY

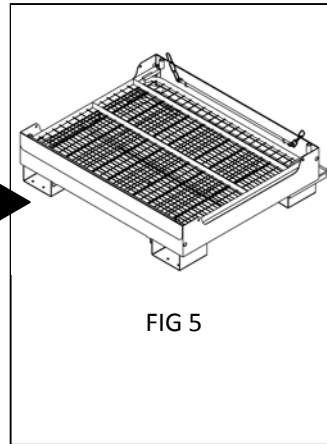
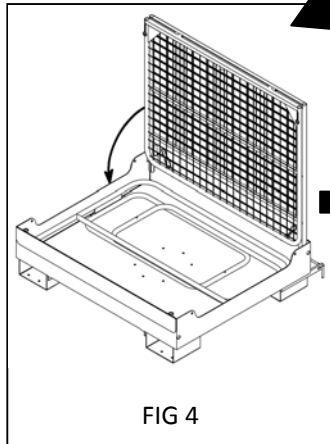
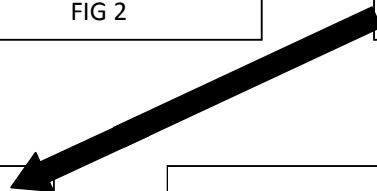
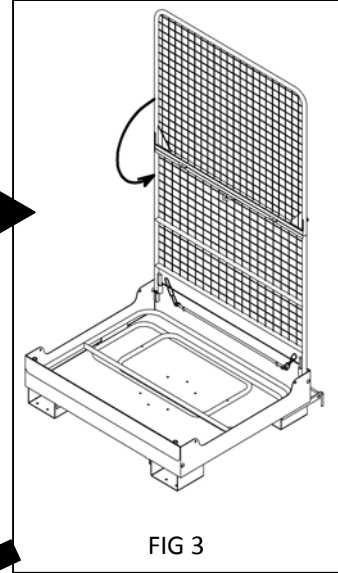
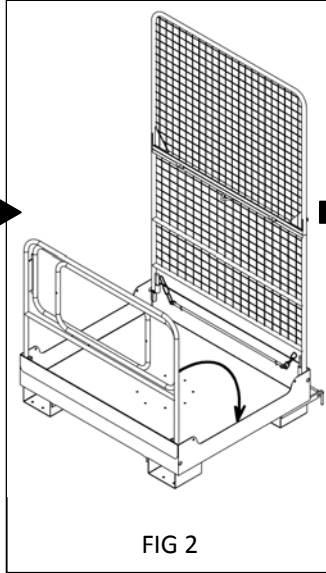
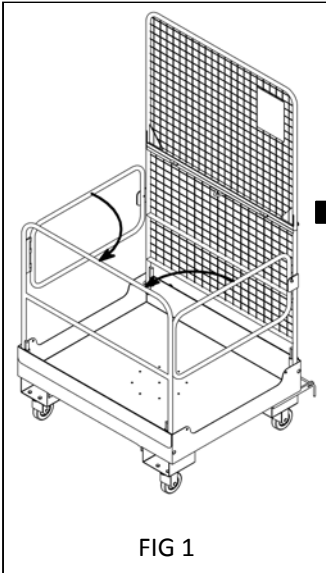
- 1) Lift the rear safeguard and secure it to the back rail by the inner pins. Unfold the top half and join the two halves together using the connecting pins.
- 2) Lift the front rail and open the left and right doors. Secure them by pins.
- 3) Move the platform to align fork pocket holes with the forks of the forklift. Adjust the forks until they match the fork pocket holes.
- 4) Move the forklift to insert the forks into the fork pocket holes. Secure the lever at the back of the platform around the heel of the forks.
- 5) Position chain bar and secure it to the carriage of the fork lift. They will prevent the platform from sliding off the forks should they be accidentally tilted downward.
- 6) Platform operator must wear a harness and lanyard.
- 7) Clear the working area of unnecessary equipment and personnel. The lift operator will move the platform into position. The platform operator can then enter the platform and secure him or herself to the platform by the harness and lanyard. Once the platform operator is secured the platform can be raised to the desired working height. All of the fork lift controls should be locked, and the lift operator should stay with the lift.
- 8) When the work is finished, platform operator informs the lift operator to lower the platform to the ground. Then the platform operator can take off the harness and lanyard and remove tools from the platform. The platform can then be detached from the forklift. Finally, fold the platform by reversing the steps of installation above.

3. SAFETY INFORMATION

- 1) Operators of platform and forklift must be trained or authorized.
- 2) The platform is only to be used in well lit areas.
- 3) Make sure there are no cables, steel rods, live electrical conductors or other protrusions in the space where the platform is lifted.
- 4) Before lifting, be sure the levers are secured behind the heel of the fork and chain to carriage.
- 5) It is prohibited for anyone to stand or pass under the platform.
- 6) Platform operator must work according to the installation instructions above.
- 7) Make sure the fork lift is properly maintained and in good working condition.
- 8) The platform operator must be secured by harness and lanyard prior to lifting.
- 9) The maintenance platform should not be used as a stock picker.
- 10) Hand held communication devices or hand signals should be used in noisy conditions.
- 11) With the platform raised, the forklift is only to be moved if the maintenance task requires it and the operation is deemed safe by both the platform operator and company safety officer.

ATTENTION: TO INSURE SAFE AND EASY USE OF YOUR WESCO FOLDABLE PLATFORM, READ THESE INSTRUCTIONS ENTIRELY BEFORE USING.

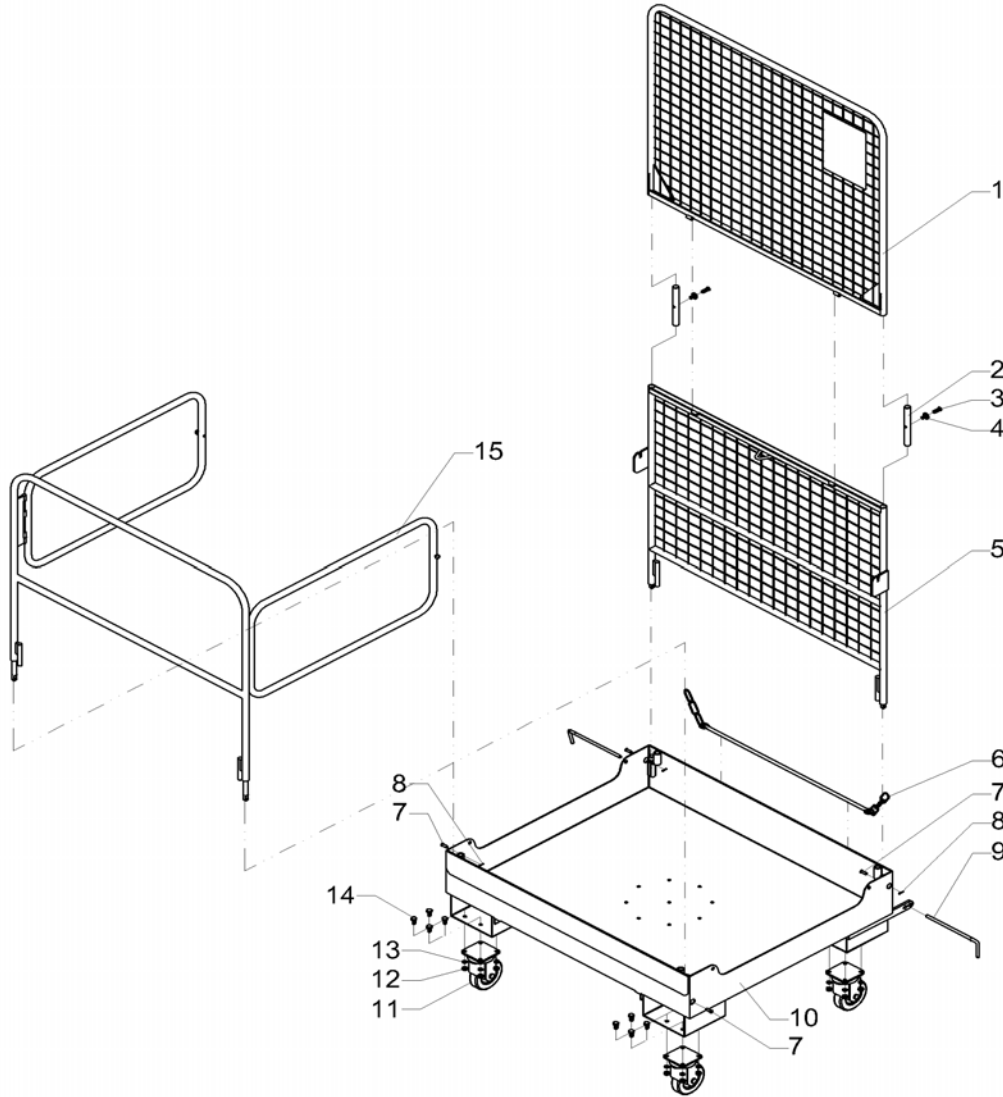
3. FOLDING PROCESS



ATTENTION: TO INSURE SAFE AND EASY USE OF YOUR WESCO FOLDABLE PLATFORM, READ THESE INSTRUCTIONS ENTIRELY BEFORE USING.

4. PART INFORMATION

4.1 PARTS DIAGRAM



4.2 PARTS LIST

Part Number	Item	Item Description	Qty.
	1	Safeguard	1
	2	Inner Pin	2
	3	Bolt	2
	4	Nut	2
	5	Back Rail	1
	6	Chain	1
	7	Pin Shaft	4
	8	Pin	4

Part Number	Item	Item Description	Qty.
	9	Lever	2
	10	Base	1
	11	Wheel	4
	12	Nut 10	16
	13	Washer 10	16
	14	Bolt M10 x 10	16
	15	Front Rail	1
272572		Caster Set	1