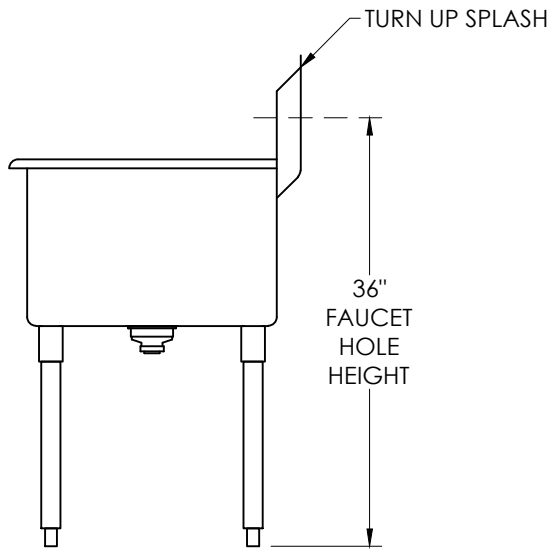
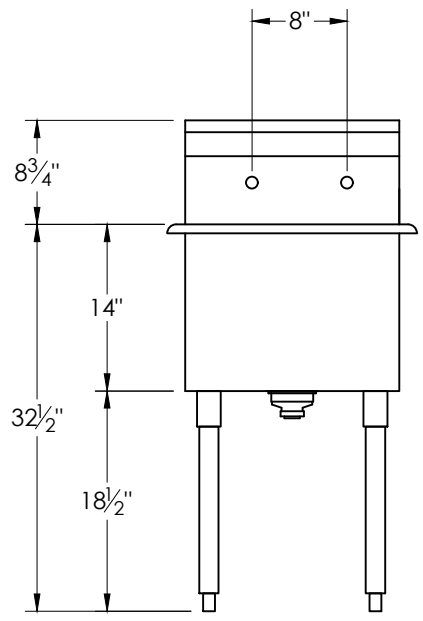


GENERAL SPECIFICATIONS:

- BODY AND BOWL: 16 GA. TYPE 430 SERIES S/S, ALL COVERED CORNERS.
- FAUCET: 8" CENTER HOLE; SPLASH MOUNT. FAUCET NOT PROVIDED.
- WASTE: 3-1/2" DIA. S/S BASKET DRAIN, NO. S-17..
- GUSSETS: CONSTRUCTED OF S/S WITH SET SCREWS.
- LEGS: 1 5/8" DIA. x 16 GA. TYPE 300 SERIES S/S TUBING.
- FEET: S/S ADJUSTABLE BULLET TYPE.
- SIPPED K.D.



By signing this document an agreement has been made to begin fabrication of above shown equipment that cannot be reversed. A contract with Aero Mfg. Co. is agreed and equipment is non-cancellable nor returnable.

APPROVED
APPROVED AS NOTED
RESUBMIT AS NOTED

SIGNATURE: _____ DATE: _____

PROPRIETARY AND CONFIDENTIAL
 The information contained in this drawing is the sole property of Aero Mfg. Co. Any reproduction in part or as a whole is prohibited.

UNLESS OTHERWISE SPECIFIED:
 Tolerances
 Fractional: ±1/4
 Decimal: ± 0.25
 Angular: ± 1°

ITEM NO.:
 QUANTITY:

	NAME	DATE
DRAWN:	ED	08-22-17
CHECKED:		
MODEL NO.:	4S1-2118	
SHEET SIZE:	A	
SCALE:	3/4" = 1'-0"	

	AERO MANUFACTURING CO. CLIFTON, NJ 07012 PHONE: 800.237.6634 FAX: 973.473.3794 WEBSITE: AEROMFG.COM
	CUSTOMER:
DWG. NO.	
SHEET: 1 OF 1	