

OPERATING INSTRUCTIONS

MOTORIZED DAMPERS

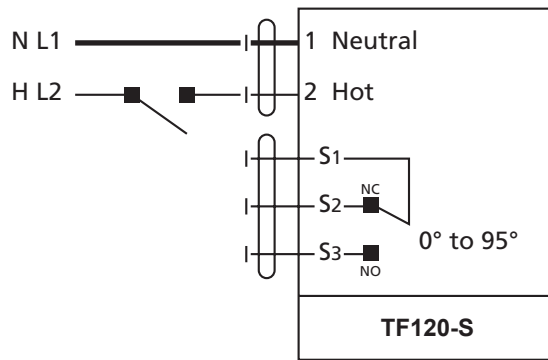
MODEL AMD/GMD 12" - 72"

Please read and save these instructions. Read carefully before attempting to assemble, install, operate or maintain the product described. Protect yourself and others by observing all safety information. Failure to comply with instructions could result in personal injury and/or property damage! Retain instructions for future reference.

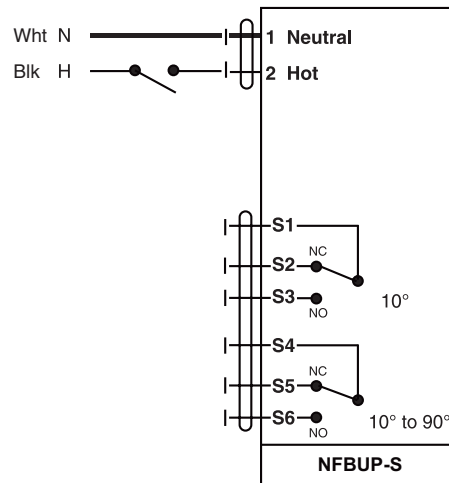
Description

Heavy-duty dampers are constructed of extruded aluminum or galvanized steel frame and blades. Dampers can be mounted horizontally or vertically. For intake or exhaust applications. Tie rod linkage is attached to blades on fan side.

Wiring Diagrams

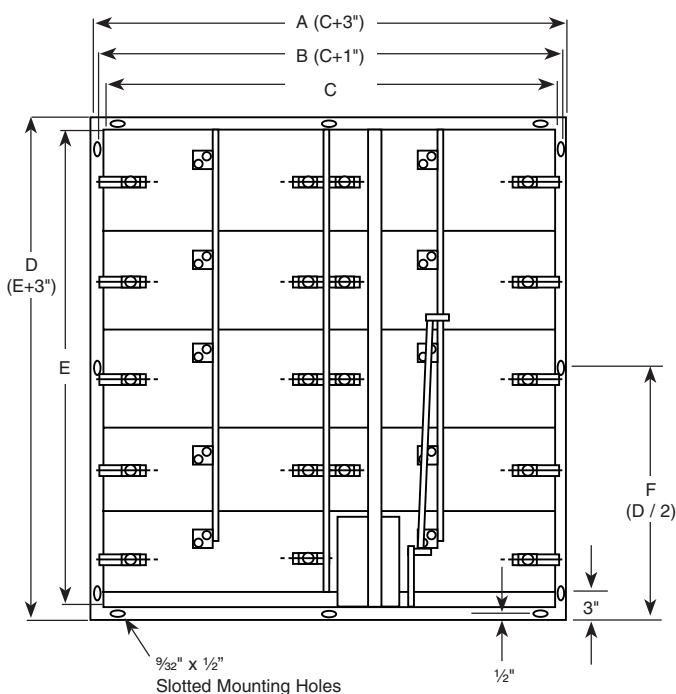


12" to 49" - 100 to 240V, 50/60 Hz

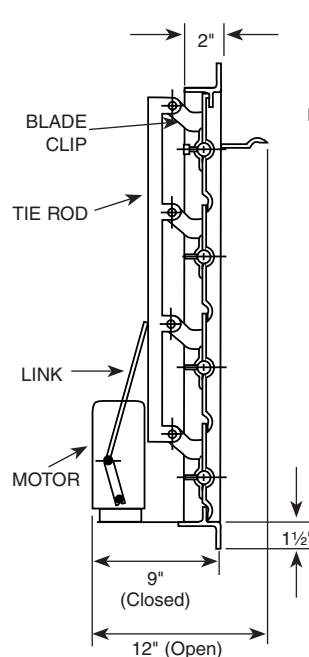


50" to 72" - 24 to 240V, 50/60 Hz

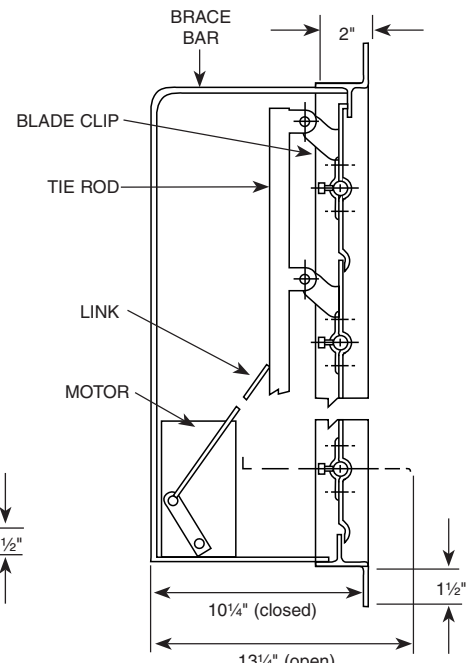
Dimensions



REAR VIEW CLOSED



SIDE VIEW
(UP TO 24")



SIDE VIEW
(25" TO 72")

Note: Above dimensions + or - normal tolerance of .0625".

MOTORIZED DAMPERS

STANDARD MOTOR SPECS:

Damper Sizes	Motor Manufacturer	Model Number	Power Supply Required	Motor Type	Temperature Range
12" x 12" to 49" x 49"	Belimo	TF120-S	100/240 V 50/60 Hz	2 Position Spring Return	-22 to 122 Deg. F
50" x 50" to 72" x 72"	Belimo	NFBUP(-S)	24/120/240 V 50/60 Hz	2 Position Spring Return	-22 to 122 Deg. F

STANDARD SIZES

Part No.	Overall (A & D) Frame Dimension (width X height)	Inside (C & E) Frame Dimension (width X height)	Required (B) Hole Opening (width X height)	Face Area (Sq. Ft.)	Est. Free Area (Sq. Ft.)
AMD / GMD 12"	15" x 15"	12" x 12"	13" x 13"	1.00	0.84
AMD / GMD 16"	19" x 19"	16" x 16"	17" x 17"	1.78	1.67
AMD / GMD 20"	23" x 23"	20" x 20"	21" x 21"	2.78	2.05
AMD / GMD 24"	27" x 27"	24" x 24"	25" x 25"	4.00	3.59
AMD / GMD 30"	33" x 33"	30" x 30"	31" x 31"	6.25	5.68
AMD / GMD 36"	39" x 39"	36" x 36"	37" x 37"	9.00	8.25
AMD / GMD 42"	45" x 45"	42" x 42"	43" x 43"	12.25	11.31
AMD / GMD 48"	51" x 51"	48" x 48"	49" x 49"	16.00	14.84
AMD / GMD 54"	57" x 57"	54" x 54"	55" x 55"	20.25	18.83
AMD / GMD 60"	63" x 63"	60" x 60"	61" x 61"	25.00	23.31

Note: Dimensions are approximate due to normal tolerances in the manufacturing process.
 Estimated Free Area calculation is based upon the following formula: $MD(A+B+(N \times C))/144$.
 Free Area x FPM = CFM; actual performance may vary.

LIMITED WARRANTY

All products manufactured are warranted by Air Conditioning Products Company (ACP) to be free from original defects in workmanship for a period of one year from date of shipment, under conditions of normal use and service. ACP will replace or repair any defective parts upon return to our plant, freight prepaid. This limited warranty will, in no way, include the payment of labor charges for field replacement of defective parts, installation, repairs of adjustments, or any other work done. Back charges will not be accepted for any reason unless ACP has given prior written permission, nor will ACP be responsible for consequential damages of any character, no limited warranty expressed or implied will supersede the foregoing.

Manufactured for Air Conditioning Products Co.
 30350 Ecorse Road • Romulus, MI 48174
acpshutters.com