

1. Disconnect frame from hopper. Save $\frac{1}{2}$ -13 x 3.0 stainless screws for further use. Discard $\frac{1}{2}$ -13 zinc plated nuts. Slide frame #3015859 into hitch receiver. Fig.1.

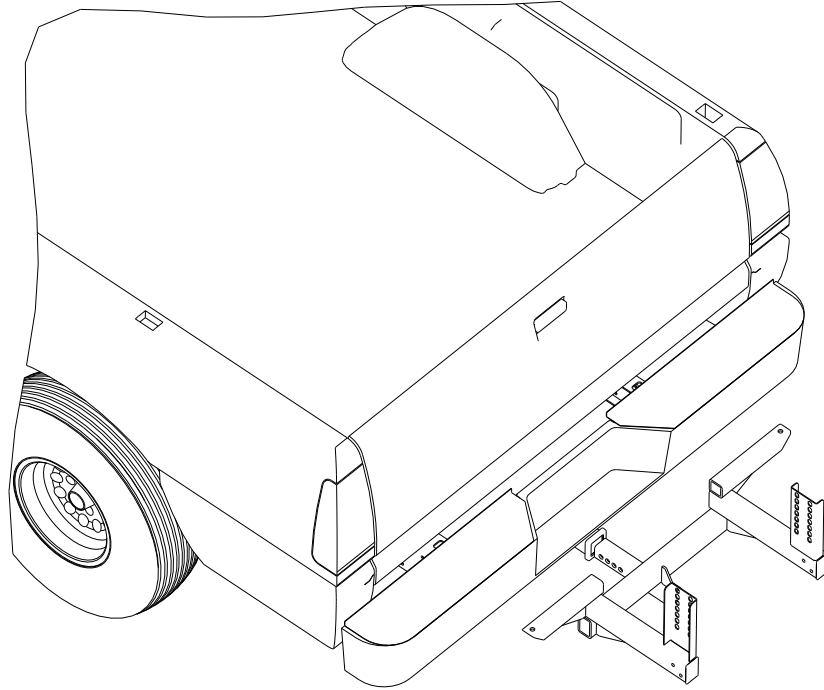


Fig. 1

2. Slide hopper assembly #3015380 between frame uprights with front portion rested on the truck's bumper. Fig.2.

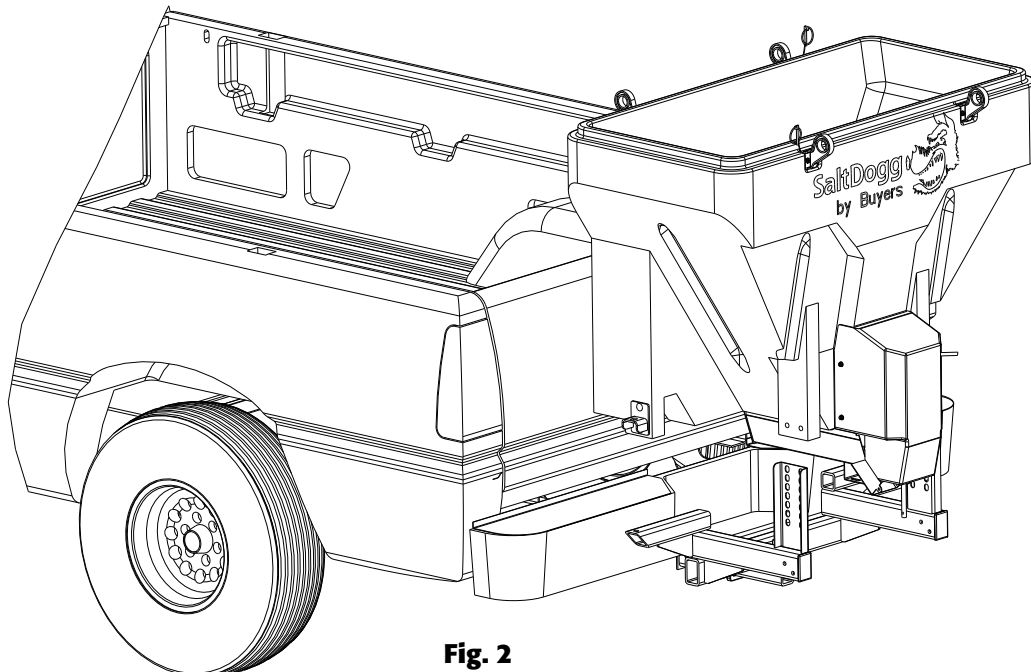


Fig. 2

3. Align holes in rear portion of the hopper with slots in frame uprights. Use slots which will position spreader horizontally or tilt it slight upwards. Secure hopper assembly to frame using 1/2-13 x 3.0 screws, flat washers and nuts. Fig.3. Do not tighten fasteners at this time.

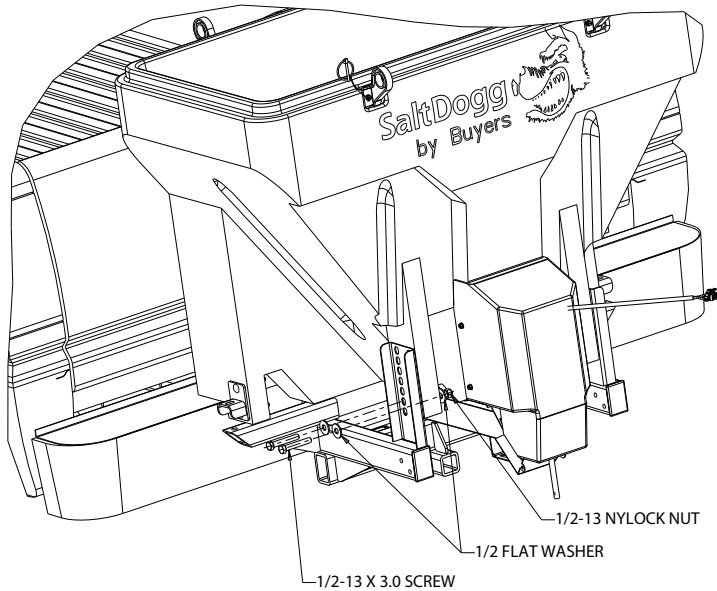


Fig. 3

4. Slide hopper and frame towards tailgate leaving about 3/8" to 1/2" space. Align closest holes in hitch receiver with holes in frame. Secure frame in hitch receiver using 5/8 hitch pin and cotter pin. Fig.4.

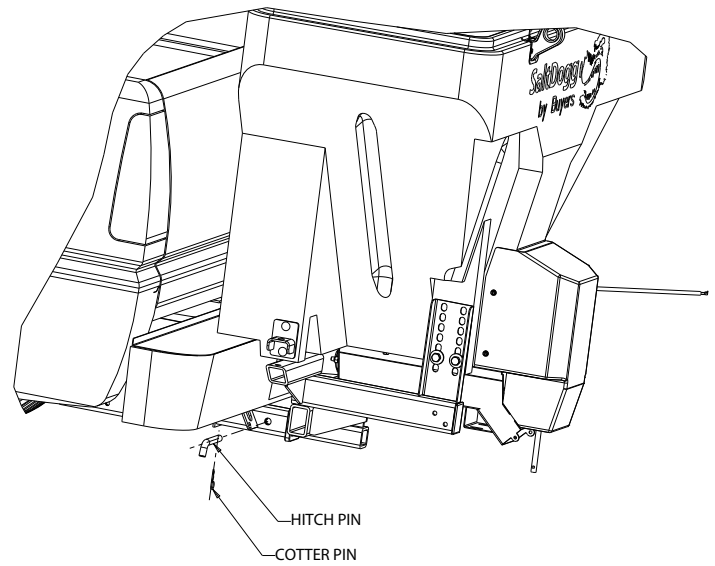


Fig. 4

5. Assembly 1/2-13 x 6.0 screws with flat washers and 1/2-13 flanged nuts as shown in Fig.5. Make sure that nuts located between hopper side brackets and frame positioned exactly as shown. These nuts must not be in contact with brackets and frame at this time.

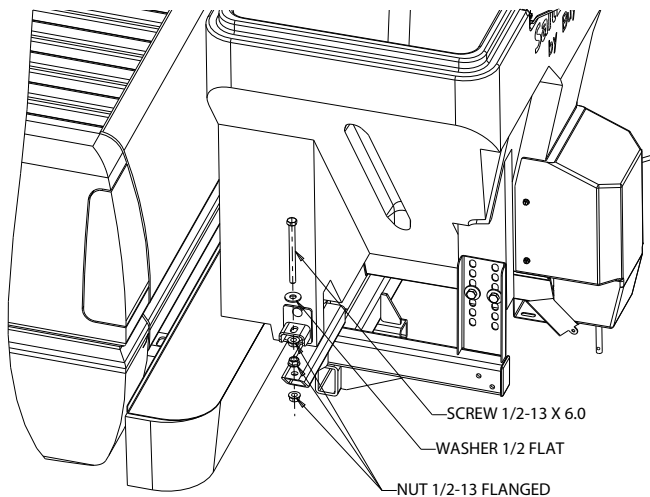


Fig. 5

6. Tighten nuts located under frame evenly on both sides of the spreader (10-15 ft-lb's. torque). Then tighten bolts in frame uprights. Finally tighten nuts located between hopper side brackets and frame. They must look as shown in Fig.6. After this procedure spreader should be securely attached to trucks bumper and frame.

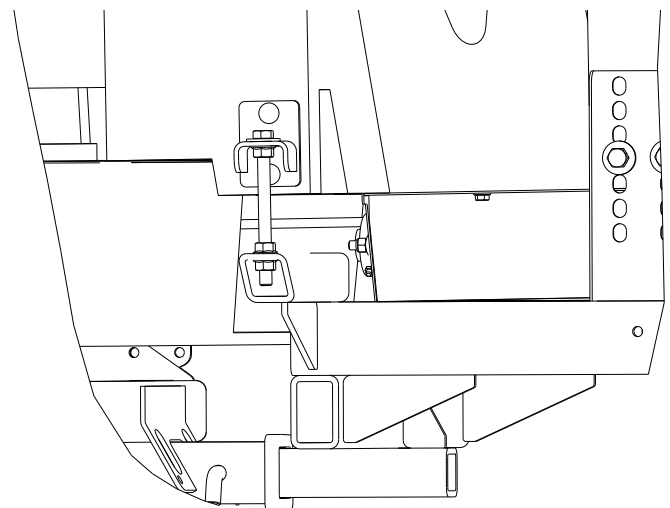


Fig. 6

7. Attach shield #3015707 to trough bracket as shown in Fig.7

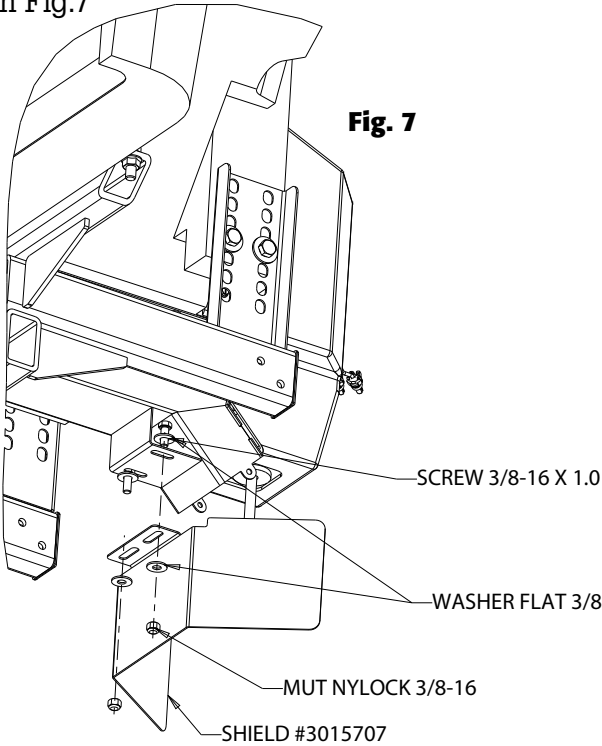


Fig. 7

8. Attach spinner protector #3016672 to spreader frame as shown in Fig.8.

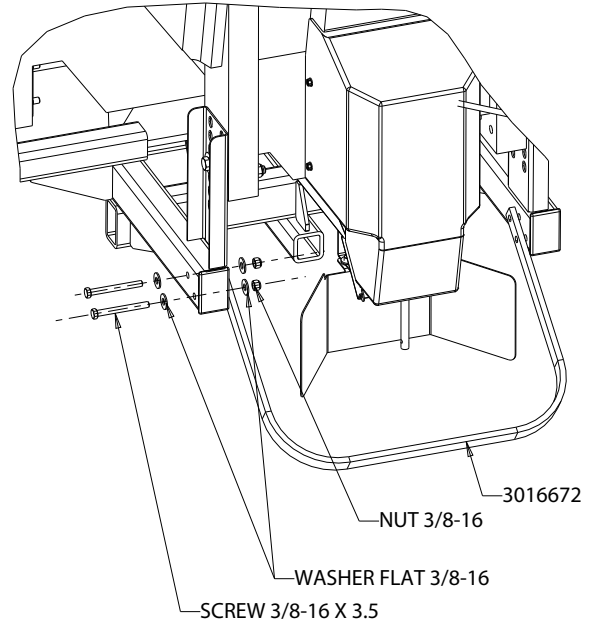


Fig. 8

9. Attach spinner disk to gear motor shaft as shown in Fig.9. Use upper hole in spinner disk. Secure disk on shaft using clevis pin and cotter pin.

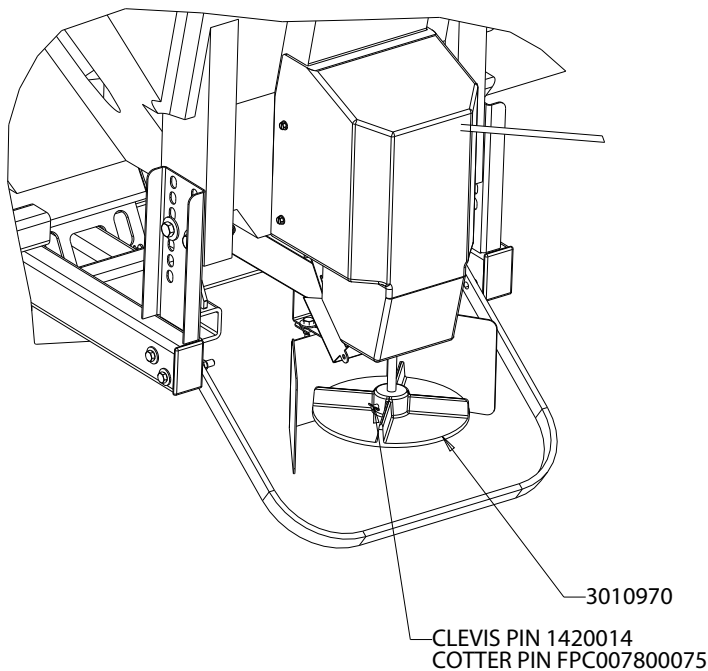


Fig. 9

10. Install lid #3015926 on to hopper. Place lid on hopper. Bend hinges outward from center of the hopper. Slide hinges openings on round protrusions of the lid. Repeat this operation on opposite side of the hopper. Secure lid on hopper using lynch pin. To open lid from ether side of the hopper disengage lynch pin, bend both hinges outwards and open lid.

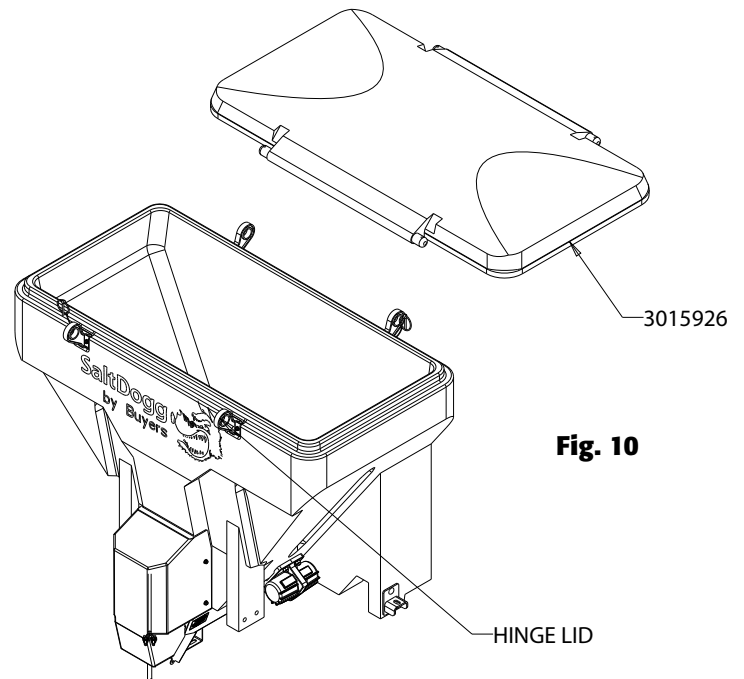


Fig. 10

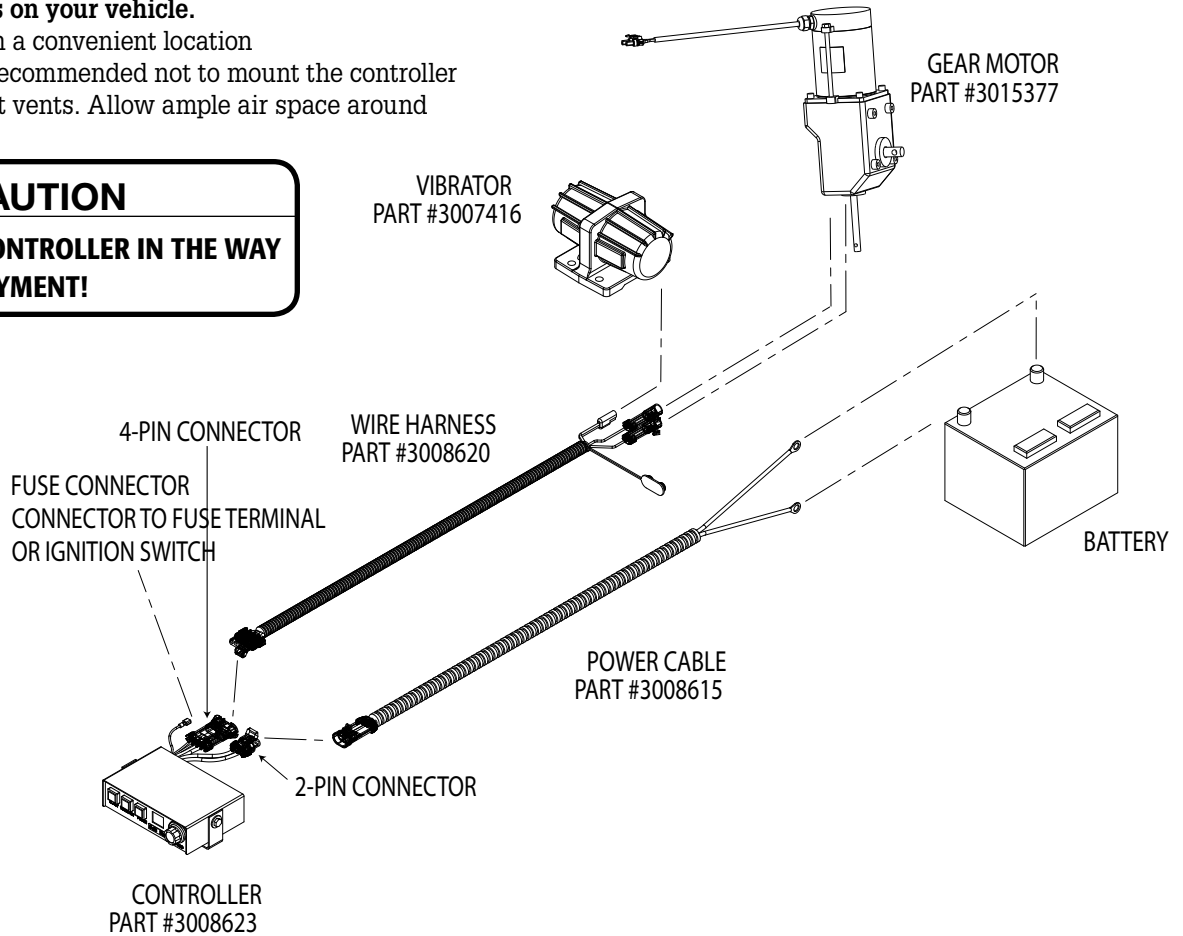
11. To prevent material loss during transportation discharge door #3016981 can be installed on trough opening. Slide discharge door on trough tabs then secure it using lock pin #3016982 and cotter pin #1420016.

THIS IS WIRE GROUND ELECTRICAL SYSTEM!
NO CONNECTIONS TO TRUCK'S FRAME OR BODY ALLOWED!

NOTE: Always disconnect battery before attempting to install electrical components on your vehicle.

Mount the controller in a convenient location in the truck cab. It is recommended not to mount the controller directly in front of heat vents. Allow ample air space around controller.

CAUTION
DO NOT MOUNT CONTROLLER IN THE WAY OF AIR BAG DEPLOYMENT!



Installing Controller and Wiring

- Route both wire harnesses into truck cab through firewall (it maybe necessary to drill holes). Insulate hole to avoid water leaks.
- Insure no wires are nicked or damaged during installation.
- Connect the 4-pin connector on the wire harness to the control box.
- Connect the 2-pin connector on the power cable to the control box.
- Connect fuse connector to the fuse terminal or ignition switch.
- Lay out a path for the power cable to the battery, use quick ties to secure power cable. **DO NOT CONNECT TO BATTERY AT THIS TIME!**
- Lay out path for wire harness to the rear of the vehicle. It is recommended to stay clear of the exhaust system. Excess heat can damage the wire harnesses. Use quick ties to secure harness to underbody.
- Connect the wire harness to the motor and vibrator.
- Connect the power and ground cables directly to the battery.
- Insure all functions of the controller are working properly.
- *Note: direction of spinner may be changed by interchanging the motor leads.*

Spreader Operation

Due to the rate at which materials absorb moisture differently, some materials may not perform as desired. Therefore, the substitution of an alternative material may be necessary for optimum performance of the spreader.

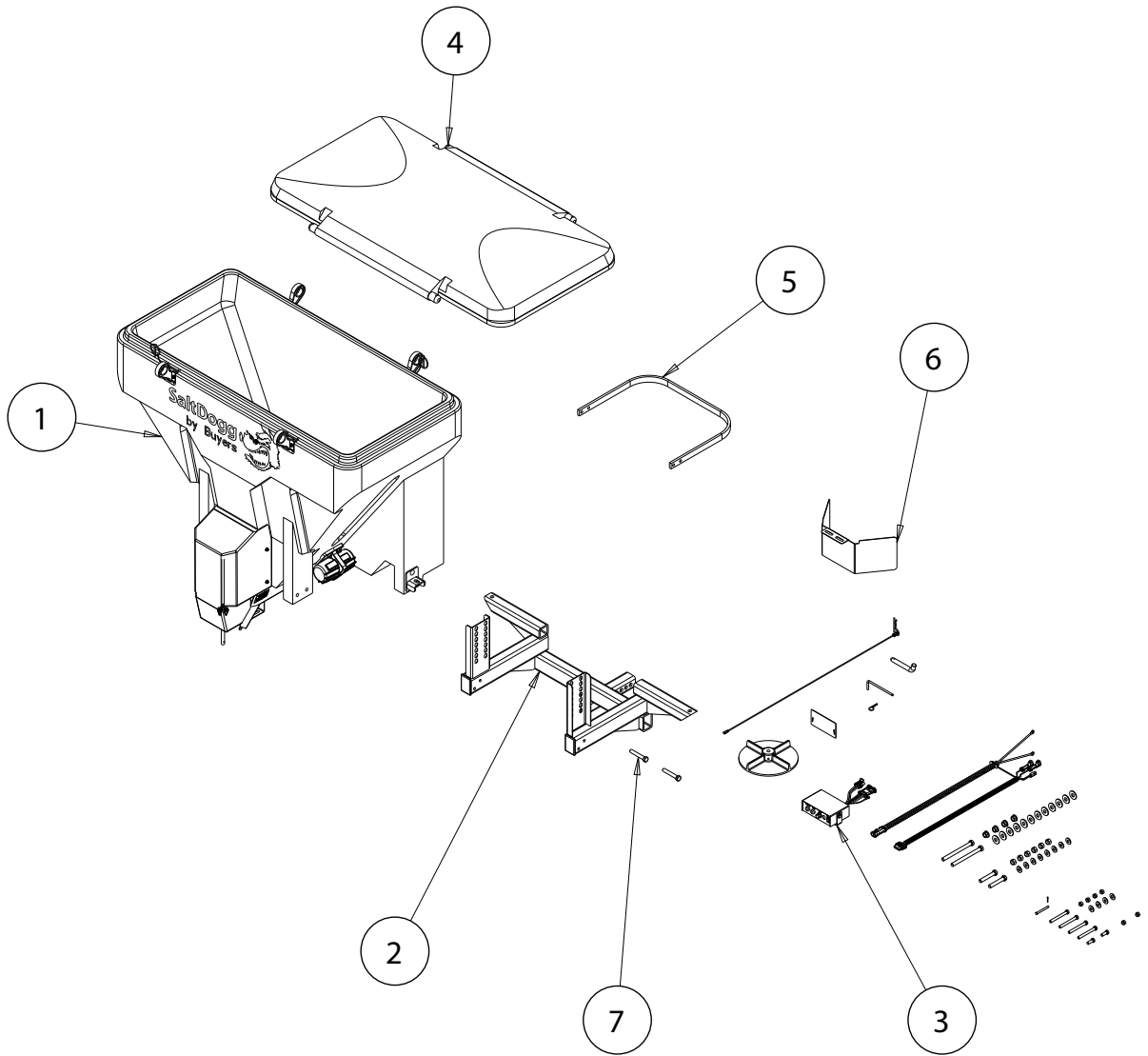
CAUTION: When filling hopper, make certain there are no large objects/ debris contained in the material, which could cause auger to bind and stop operation of the spreader.

CAUTION: Material must never be left in the hopper for extended periods of time when spreader is not in use. Material will bind, harden and may damage spreader.

Maintenance Instructions

- Periodically inspect spreader for loose bolts and nuts.
- Inspect for broken wires, frayed or cracked insulation.
- Lubricate bearing every 10-15 hrs. using general automotive grease.

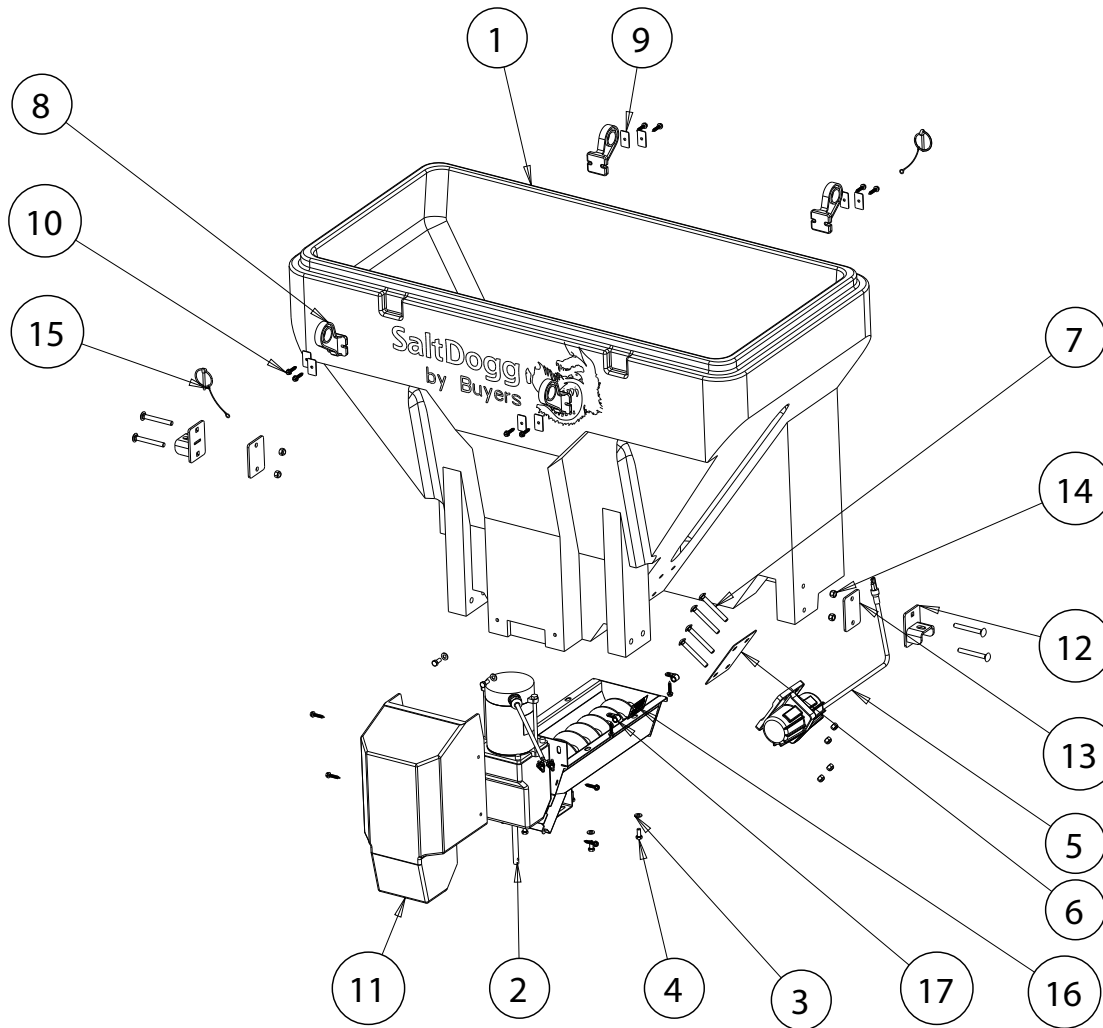
Tailgate Auger



Bill of Materials

ITEM	PART NO.	QTY.	DESCRIPTION
1	3015380	1	HOPPER ASSEMBLY, TGS07
2	3015859	1	FRAME, HITCH MOUNT
3	3015991	1	HARDWARE BOX TGS07
4	3015926	1	LID, TGS07
5	3016672	1	DISC PROTECTOR
6	3015707	1	SHIELD TGS07
7	3001250	2	SCREW, HHC-1/2-13 X 3 SST

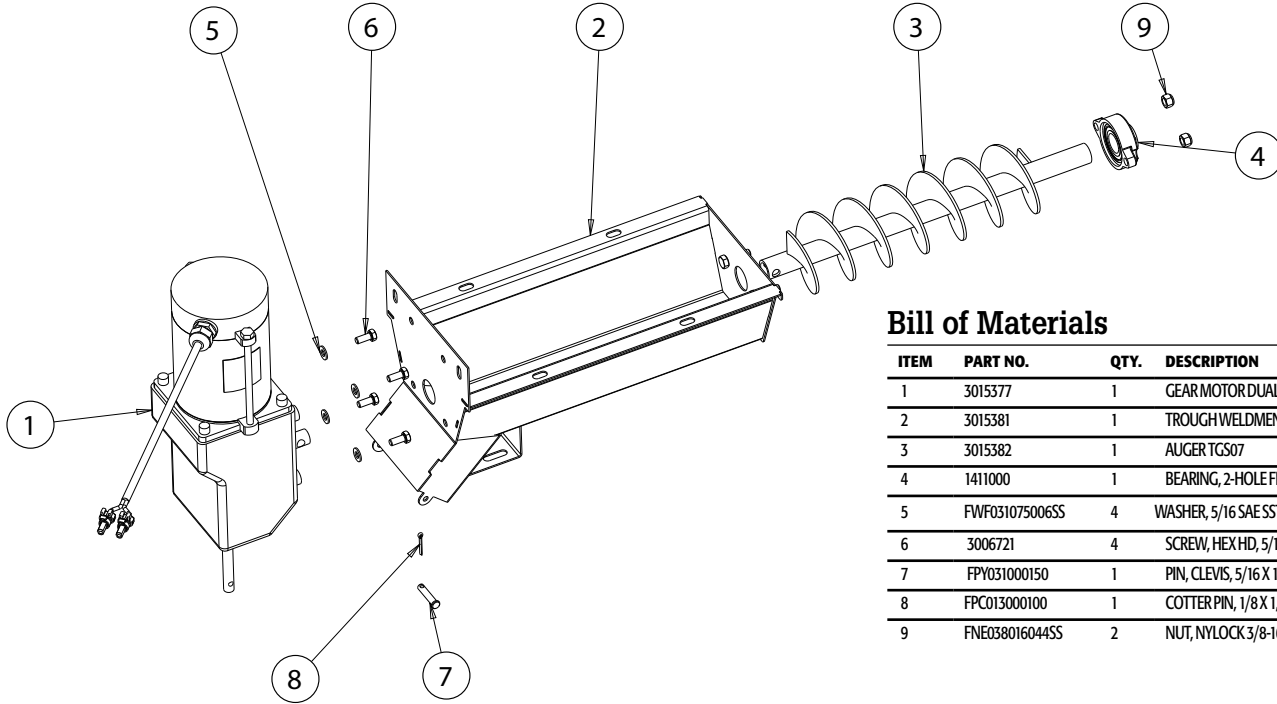
TGS07 Hopper Assembly



Bill of Materials

ITEM	PART NO.	QTY.	DESCRIPTION
1	3015379	1	HOPPER TGS07
2	3015383	1	TROUGH ASSEMBLY TGS07
3	FWF031075006SS	6	WASHER, 5/16 SAE SST
4	3006721	6	SCREW, HEX HD, 5/16-18 X 3/4 GR5 SS
5	3007416	1	VIBRATOR 200 LBS 12 VDC
6	3017030	1	RETAINER, VIBRATOR
7	3017028	8	BOLT, CRG, 3/8-16x3.25 SST
8	3016021	4	HINGE, LID TGS07
9	3016983	8	RETAINER, HINGE
10	3015925	14	SCREW #14X1.25 SST
11	3015694	1	MOTOR COVER TGS07
12	3016670	2	BRACKET DRAW, WELDMENT
13	3017029	2	RETAINER, DRAW BRACKET
14	FNE038016044SS	8	NUT, NYLOCK 3/8-16 X 7/16 SST
15	3016979	2	PIN, 3/16 LYNCH
16	3017100	1	LABEL, SERIAL NUMBER, 1400600SS
17	4375	2	CLAMP, HOSE .4375, 9/32 HOLE

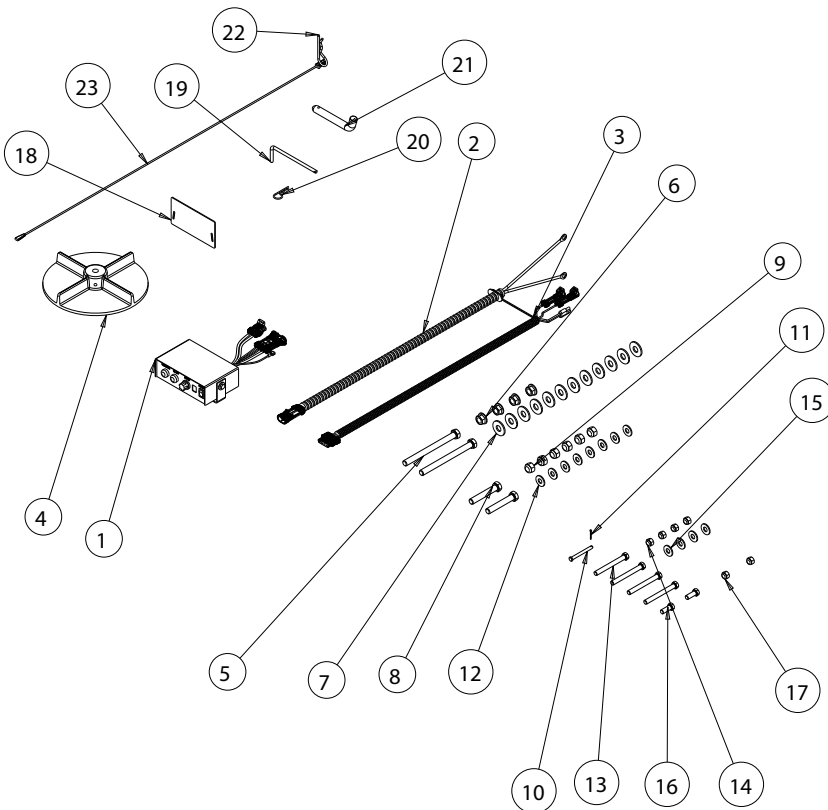
TGS07 Trough Assembly



Bill of Materials

ITEM	PART NO.	QTY.	DESCRIPTION
1	3015377	1	GEAR MOTOR DUAL SHAFT .5 HP 12VDC
2	3015381	1	TROUGH WELDMENT, TGS07
3	3015382	1	AUGER TGS07
4	1411000	1	BEARING, 2-HOLE FLANGED 1"
5	FWF031075006SS	4	WASHER, 5/16 SAE SST
6	3006721	4	SCREW, HEX HD, 5/16-18 X 3/4 GR5 SS
7	FPY031000150	1	PIN, CLEVIS, 5/16 X 1-1/2, W/ 5/32 PH, ZN
8	FPC013000100	1	COTTER PIN, 1/8 X 1, ZINC
9	FNE038016044SS	2	NUT, NYLOCK 3/8-16 X 7/16 SST

TGS07 Hardware Box



Bill of Materials

ITEM	PART NO.	QTY.	DESCRIPTION
1	3011864	1	CONTROLLER TGS W/ VIBRATOR SWITCH
2	3008615	1	WIRE HARNESS, POWER TGS
3	3008620	1	WIRE HARNESS MAIN W/ VIBRATOR, TGS
4	3010970	1	SPINNER, POLY, TGS06
5	3017039	2	SCREW, HEX HEAD CAP 1/2-13 X 6.00 SST FULL THREAD
6	3001523	4	NUT, HX FLNG-1/2-13 SST
7	3000269	12	WASHER, FLAT 1/2 USS, SST
8	3001250	2	SCREW, HHC-1/2-13 X 3 SST
9	FNE050013053SS	6	NUT, NYLOCK 1/2-13 ZINC
10	1420014	1	PIN CLEVIS, 1/4 X 2.5
11	FPC007800075	1	COTTER PIN, 5/64 X 3/4
12	FWF038100007	8	WASHER, FLAT 3/8 USS ZINC
13	FCS038016350	4	SCREW, HHC-3/8-16 X 3.5 GR 5 ZN
14	FNE038016044	4	NUT, NYLOCK 3/8-16 X 7/16 ZINC
15	FWF038100007SS	4	WASHER, FLAT 3/8 USS SST
16	FCS038016100SS	2	SCREW, HHC 3/8-16 X 1 304 SST
17	FNE038016044SS	2	NUT, NYLOCK 3/8-16 X 7/16 SST
18	3016981	1	DOOR, DISCHARGE
19	3016982	1	PIN LOCK, DISCHARGE DOOR
20	1420016	1	PIN, HAIR COTTER, CLEAR ZINC
21	HP6253WC1	1	PIN, 5/8 HITCH
22	HP12	1	PIN, HAIR COTTER 5/32" ZN 3.25 OAL
23	0203700	1	WIRE ASSEMBLY, 36 LONG
-	3017097	1	INSTRUCTION MANUAL TGS07

Installation Instructions

TGS07 Salt Spreader

Safety Precautions

WARNING

Observe the following Safety Precautions before, during and after operating this spreader. By following these precautions and common sense, possible injury to persons and potential damage to this machine may be avoided.

1. Read this entire Installation Instruction before operating this spreader.
2. Read all safety decals on the spreader before operating.
3. Verify that all personnel are clear of the spreader spray area before starting or operating this spreader.
4. Do not adjust, clean, lubricate or unclog material jams without first turning off the spreader.
5. Make sure the spreader is securely fastened to the vehicle in accordance with this manual.
6. Do not operate a spreader that is in need of maintenance or repairs.
7. Always disconnect the battery before removing or replacing electrical components.

Spreader Assembly

Check contents of box against parts list to make sure all components are included. When ordering replacement or spare parts refer to parts list for part numbers.



SPREADER WARRANTY

This warranty replaces all previous warranties and no employee of this company is authorized to extend additional warranties, or agreements, or implications not explicitly covered herein.

Buyers Products Company warrants all parts of the product to be free from defects in material and workmanship for a period of one (1) year. Parts must be properly installed and used under normal conditions. Normal wear is excluded.

Any part, which has been altered, including modifications, misuse, accident, or lack of maintenance will not be considered under this warranty.

The sole responsibility of Buyers Products Company under this warranty is limited to repairing or replacing any part(s), which are returned, prepaid, 30 days after such defect is discovered, and returned part(s) are found to be defective by Buyers Products Company.

Authorization from Buyers Products Company must be obtained before returning any part. The following information must accompany defective parts returned to Buyers Products Company: RMA #, spreader model, serial number, date installed, and distributor from whom purchased.

Buyers Products Company shall not be liable for damage arising out of failure of any unit to operate properly, or failure, or delay in work, or for any consequential damages. No charges for transportation or labor performed on any part will be allowed under this warranty.