

HEATSTAR

by ENERCO



Workin'
Warm.

Workin'
Tough.



CONSTRUCTION HEATERS

**THE ONLY HEAVY DUTY
KEROSENE HEATER
BUILT FOR THE JOBSITE**

HEAVY DUTY PORTABLE DIRECT-FIRED FORCED AIR HEATERS

SMALL JOBSITES

Model #	Description
F170250	HS50K 50,000 BTU/HR
F170275	HS75KT 75,000BTU/HR

STANDARD FEATURES:

- Heavy Construction - Illuminated On-Off Switch - 115 V 60Hz
- Flame Safety/Overheat Safety Shutoff
- Enclosed Motor - Fuel Gauge • Continuous Ignition
- Cord Wrap (HS75KT only) - High Output Fan
- Larger "Glove-Friendly" Controls
- CSA Certified



LARGE JOBSITES

Model #	Description
F170325	HS125KT 125,000 BTU/HR
F170375	HS175KT 175,000 BRU/HR
F170380	HS210KT 210,000 BTU/HR

STANDARD FEATURES:

- Heavy Construction - Illuminated On-Off Switch -115 V 60Hz
- Flame Safety/Overheat Safety Shutoff
- Enclosed Motor - Fuel Gauge - High Output Fan • Continuous Ignition
- Large Heavy-Duty Handles w/cord wrap
- 10" Pneumatic Tires
- Larger "Glove-Friendly" Controls
- CSA Certified



BIG PROJECTS

Model #	Description
F151089	HS3500DF 360,000 BTU/HR
F151100	HS6000DF 610,000 BTU/HR

STANDARD FEATURES:

- Heavy Construction - Built-In Oil Burner - 115 V 60Hz
- Flame Safety/Overheat Safety Shutoff
- Electronic Flame Control System • Continuous Ignition
- Stainless Steel Heat Exchanger
- High Output Fan
- Pre-Heated Oil Filter (HS6000DF only) - Pre-Purge And Ventilation Cycles
- Optional Remote Thermostat • CSA Certified



SPECIFICATIONS:	HS50K	HS75KT	HS125KT	HS175KR	HS210KT	HS3500DF	HS6000DF
Stock Number	F170250	F170275	F170325	F170375	F170380	F151089	F151100
Output (BTU/HR)	50,000	75,000	125,000	175,000	210,000	360,000	610,000
Heating Area (SQ. FT.)	1,200	1,750	3,000	4,250	6,000	9,400/75,000	14,250/114,000
CFM Output	165	240	275	400	400	1,800	2,800
Fuel Consumption (GAL/HR-L/HR)	.38/1.43	.56/2.11	.77/2.91	1.15/4.35	1.60/6.05	2.75/10.41	4.4/16.65
Tank Capacity (GAL-L)	4/15	6/22	14/52	14/52	14/52	27.7/104	35.6/134
Tires/Wheels	NA	NA	10" Pneumatic	10" Pneumatic	10" Pneumatic	10" Pneumatic	10" Pneumatic
Operating Hours On Full Tank	11	11	15	10	8	9.5	8.6
Shipping Size (L x W x H)	32" x 14" x 14.5"	32" x 14.25" x 17"	42" x 18" x 22"	42" x 18" x 22"	42" x 18" x 22"	66" x 27" x 39"	76" x 27" x 39"
Shipping Weight	43 lbs.	43 lbs.	74 lbs.	81 lbs.	87 lbs.	227 lbs.	247 lbs.
Multi-Fuel (No. 1 Or No. 2 Diesel Oil, Kerosene, JP-8 Or Jet A)	Yes	Yes	Yes	Yes	Yes	Yes	Yes
Optional Remote Thermostat	NA	NA	NA	NA	NA	F150035	F150035

HEATSTAR HD

by ENERCO®

LARGE JOBSITES



CSA Certified

Model #	Description	Fuel
F151010	HS1000ID 110,000 BTU/HR	Oil
F151020	HS2000ID 205,000 BTU/HR	Oil
F151030	HS3000ID 300,000 BTU/HR	Oil
F151040	HS4000ID-HD 400,000 BTU/HR	Oil With 2-Stage Burner
F151092	HS4000IDG-HD 380,000 BTU/HR	Dual-Fuel: Natural Gas/LP



HS1000ID
F151010

HS2000ID
F151020

HS3000ID
F151030

HS4000IDHD
F151040

SPECIFICATIONS:	HS1000ID	HS2000ID	HS3000ID	HS4000ID-HD	HS4000IDG-HD
Stock Number	F151010	F151020	F151030	F151040	F151092
LP/NG Burner	NA	NA	NA	NA	Included
Oil Burner	Included	Included	Included	Included	NA
Input (BTU/HR)	110,000	205,000	300,000	400,000	380,000
CFM Output	880	1,530	2,500	2,760	3,250
Operating Hours On Full Tank	12	11	12.5	15	NA
Oil Fuel Consumption (GAL/HR-L/R)	0.81/3.06	1.56/5.90	2.18/8.25	2.68/10.14	NA
LP Fuel Consumption (GAL/HR-L/R)	NA	NA	NA	NA	4.2/15.89
NG Fuel Consumption (CUBIC/FT)	NA	NA	NA	NA	380
Fuel Type	Oil	Oil	Oil	Oil	NG/LP
Tank Capacity (GAL)	11.9	17.2	27.7	57	NA
Power Required	115V	115V	115V	115V	115V
Duct Diameter	12"	14"	16"	20"	20"
Max Length Of Duct	25	50	50	100	100
Shipping Size (L x W x H)	47" x 18" x 27"	9" x 21" x 42"	76" x 29" x 46"	70" x 29" x 50"	72" x 30" x 31"
Shipping Weight (LBS)	94	176	264	330	306

Duct Adapter



Heat Duct Shown With Optional Duct Adapter



Dual Duct Adapter



Remote Thermostat w/32" cord



OPTIONAL ACCESSORIES:	HS1000ID	HS2000ID	HS3000ID	HS4000ID-HD	HS4000IDG-HD
Duct Adapter	F151015 (12")	F151025 (14")	F15035 (16")	F151045 (20")	F151045 (20")
Dual Duct Adapter 2-12*	NA	F151052	F151032	NA	NA
Dual Duct Adapter 2-16*	NA	NA	NA	F151042	F151042
3-Way Duct Adapter 3-12"	NA	NA	NA	F151043	F151043
Flexible Heat Duct (25Ft.)					
12"	F150040	F150040	F150040	F150040	F150040
14"	NA	F150043	NA	NA	NA
16"	NA	NA	F150050	F150050	F150050
20"	NA	NA	NA	F151084	F151084
Remote Thermostat	F150035	F150035	F150035	F150035	F150035
Lift Bracket Kit	F150031	F150031	F150031	Included	Included
External Tank Kit	F150032	F150032	F150032	F150032	NA
Oil Fuel Tank	Included	Included	Included	Included	NA
Heavy-Duty Frame And Wheel Kit	NA	NA	F150285	Included	Included

HEAVY DUTY PORTABLE INDIRECT-FIRED FORCED AIR HEATERS

**NEW STRONGER DESIGN
BUILT FOR THE JOBSITE**

PORTABLE PROPANE AND NATURAL GAS FORCED AIR HEATERS

SMALL WORKSITES

Model #	Description	Heats Up To	Operates Up To
F170035	HS35FA 35,000 BTU/HR	800 Sq. Ft.	12 hrs. on a 20 lb. tank
F170060	HS60FAV 30,000-60,000 BTU/HR	1,250 Sq. Ft.	14 hrs. on a 20 lb. tank
F170085	HS85FAV 50,000-85,000 BTU/HR	2,000 Sq. Ft.	8 hrs. on a 20 lb. tank
F170125	HS125FAV 75,000-125,000 BTU/HR	3,000 Sq. Ft.	11 hrs. on a 40 lb. tank

LARGE JOBSITES

Model #	Description	Heats Up To	Operates Up To
F170170	HS170FAVT 125,000-170,000 BTU/HR	4,000 Sq. Ft.	17 hrs. on a 100 lb. tank
F170180	HS170NG 150,000 BTU/HR	3,500 Sq. Ft.	Natural Gas
F172425	HS400FAVT 250,000-400,000 BTU/HR	9,000 Sq. Ft.	17 hrs. on (2) 100 lb. tanks



CSA Certified



HS35FA
F170035

HS125FAV
F170125

HS170FAVT
F170170

HS400FAVT
F172425

SPECIFICATIONS:	HA35FA	HS60FAV	HS85FAV	HS125FAV	HS170FAV	HS170NG	HS400FAVT
Stock Number	F170035	F170060	F170085	F170125	F170170	F170180	F172425
Output (BTU/HR_)	35,000	30,000-60,000	50,000-85,000	75,000-125,000	125,000-170,000	150,000	250,000-400,000
Output CFM	100	300	300	350	450	450	1400
Fuel	Propane Gas	Propane Gas	Propane Gas	Propane Gas	Propane Gas	Natural Gas	Propane Gas
Min. LP Tank Size	20 lb.	20 lb.	20 lb.	40 lb.	100 lb.	NA	100 lb.
Fuel Consumption (lbs/hr)	1.6	1.2 to 2.08	2.3 to 3.9	3.5 to 5.8	5.8 to 7.8	138 cub. ft./r. (NG)	11.5 to 18.5
Pressure Regulator Settings	10 PSI	28" W.C.	28" W.C.	28" W.C.	28" W.C.	4" W.C.	20 PSI
Adjustable Height Control	-	Yes	Yes	Yes	Yes	Yes	-
Flame Safety	Yes	Yes	Yes	Yes	Yes	Yes	Yes
High Temperature Limit Switch	240 F	240 F	240 F	240 F	240 F	240 F	240 F
Ignition	Piezo	Continuous	Continuous	Continuous	Automatic Solid State	Automatic Solid State	Automatic Solid State
Thermostat	-	-	-	-	Built-in	Built-in	Built-in
Power Required	115 V. 60 Hz 3a	115 V. 60 Hz 3a	115 V. 60 Hz 3a	115 V. 60 Hz 3a	115 V. 60 4a	115 V. 60 4a	115 V. 60 4a
Propane Hose-20ft.	1/4" I.D. w/Regulator and POL	3/8" I.D w/Regulator and POL	3/8" I.D. w/Regulator and POL	3/8" I.D. w/Regulator and POL	3/8" I.D. w/Regulator and POL	NA	1/4" I.D. w/Regulator and POL
POL/Excess Flow Check Valve	Yes	Yes	Yes	Yes	Yes	NA	Yes
Shipping Size (L x W x H)	19" x 11.5" x 14"	18.5" x 11.5" x 14"	21" x 11.5" x 16"	20.25" x 12" x 15.5"	26.5" x 11.5" x 16.75"	26.5" x 11.5" x 16.75"	38.58" x 15" x 22.25"
Net Weight (Includes Hose/Regulator/POL Assembly)	15 lbs.	16lbs.	18 lbs.	23 lbs.	32 lbs.	32 lbs.	47 lbs.
Shipping Weight	17 lbs.	20 lbs.	20 lbs.	25 lbs.	34 lbs.	34 lbs.	51 lbs.
Shipping Cube	1.8'	1.7'	2.2'	2.7'	3.0'	3.0'	7.5'

**QUIET BURNER TECHNOLOGY®
DELIVERS 50% LESS NOISE**

HEATSTAR
by ENERCO®

CORDLESS FORCED AIR HEATERS

Model #	Description	Heats Up To	Operates Up To
F227900	MH35CLP 35,000 BTU/HR	800 Sq. Ft.	8 hrs. on a single charge

SPECIFICATIONS:	MH35CLP
Stock Number	F227900
BTU/HR Output	35,000
Fuel	Propane
Min. Tank Size	20 lbs
Tank Connection	10' hose and reg.
Shipping Size	L 17" x W 10" x H 14"
Weight	17 lbs

STANDARD FEATURES:

- Replaceable 12 Volt sealed lead acid battery
- Operates 8 Hours on a single charge
- Built in battery charger/Electronic ignition
- Recharges in 5 Hours
- Operates while charging
- Quiet burn technology (50% quieter than standard model)



Model #	Description	Heats Up To	Operates Up To
F128835	HS60CLP 30-60,000 BTU/HR	1,250 Sq. Ft.	4 hrs. on a single charge

SPECIFICATIONS:	HS60CLP
Stock Number	F128835
BTU/HR Output	30-60,000
Fuel	Propane
Min. Tank Size	20 lbs
Tank Connection	10' hose and reg.
Shipping Size	L 12" x W 21" x H 16"
Weight	22 lbs

STANDARD FEATURES:

- Same as HS35CLP
- Operates 4 Hours on a single charge
- Extra battery (F227964) extend run time to 8 hrs



CONVECTION SMALL WORKSITES

Model #	Description	Heats Up To	Operates Up To
F170470	HS80CVX - 30,000-80,000 BTU/HR	1,900 Sq. Ft.	14 hrs. on a 20 lb. tank
F170485	HS80NG - 60,000 BTU/HR	1,400 Sq. Ft.	Natural Gas

CONVECTION LARGE JOBSITES

Model #	Description	Heats Up To	Operates Up To
F170475	HS200CVX - 75,000-200,000 BTU/HR	4,700 Sq. Ft.	29 hrs. on a 100 lb. tank

SPECIFICATIONS:	HS80CVX	HS80NG	HS200CVX
Stock Number	F170470	F170485	F170475
Output (BTU/HR)	30,000-80,000	60,000	75,000-200,000
Fuel	Propane Gas	Natural Gas	Propane Gas
Propane Consumption (lbs/hr)	1.4 to 3.7	-	3.5 to 9.3
Pressure Regulator Settings	11" W.C.	6" W.C.	10 PSI
Flame Safety*	Thermocouple Operated Gas Valve	Thermocouple Operated Gas Valve	Thermocouple Operated Gas Valve
Standing Pilot	Yes	Yes	Yes
Ignition	Piezo	Piezo	Piezo
Power Required	None	None	None
Hose 20ft.	3/8" I.D. w/Regulator and POL	NA w/Natural Gas	1/4" I.D. w/Regulator and POL
POL/Excess Flow Check Valve	Yes	NA w/Natural Gas	Yes
Shipping Size (L x W x H)	15.25" x 18.25" x 21.75"	15.25" x 18.25" x 21.75"	18.25" x 15" x 27.5"
Net Weight (Includes Hose/Regulator/POL Assembly)	19 lbs.	19 lbs.	25 lbs.
Shipping Weight	21 lbs.	21 lbs.	27 lbs.
Shipping Cube	3.50	3.50	4.36



CSA Certified

CORDLESS FORCED AIR LP HEATERS

OIL FIRED RADIANT HEATER

OIL FIRED RADIANT HEATER

Model #	Description
F151500	HS1551R 155,000 BTU/HR
F151490	HS1151R, 115,000 BTU/HR

STANDARD FEATURES:

- Radiant Heat with No Air Movement
- Heavy Duty Construction
- Low Noise Level
- Single Point Bail Lift
- Odor Free
- Kerosene, Diesel, Fuel Oil
- AISI 430 Stainless Steel Combustion Chamber
- Shock Proof Fuel Tank
- Adjustable Floor-Heat Shield
- CSA Certified

SPECIFICATIONS:	HS1551R	HS1151R
Stock Number	F151500	F151490
BTU/HR Output	155,000	115,000
Fuel Tank	17 Gallons	11.4 Gallons
Run Time	16 Hrs	13.4 Hrs
Electric	120 V	120 V
Running Amps	4.1 Amps	2.15 Amps
Weight	161 lbs	104 Lbs
Size	L 40" X W 28" X H 41"	L 35" x W 21" x H 32"



DUAL FUEL DIRECT FIRED

DUAL FUEL DIRECT FIRED

Model #	Description
F151200	HS4000NG/LP 400,000 BTU/HR

STANDARD FEATURES:

- Dual Fuel Natural Gas/Propane
- Simple gas valve switch to change fuels and safety locking device to keep valve in set position
- 20" Duct-Ductable up to 50'
- Clean Burn with Very Low (CO, and NOx)
- Approved for construction, greenhouses and brooders
- Duct and duct adapter optional
- Remote thermostat with 30' cord optional
- Ventilation only mode (Fan can be operated when burner is off)
- CSA Certified

SPECIFICATIONS:	HS4000NG/LP
Stock Number	F151200
BTU/HR Output	400,000
Electric	120 V
Output CFM	4,120
Running Amps	8.5 Amps
Weight	192 lbs
Size	L 56" x W 24" x H 33"



Shown with optional Duct and Duct Adapter



Dual Fuel Gas Valve



PROPANE RADIANT HEATERS

Model #	Description
F242100	MH15T 8,000-15,000 BTU/HR
F242650	MH30T 8,000-30,000 BTU/HR
F242915	MH45T 8,000-45,000 BTU/HR



MH15T

Variable Output Of: 8,000-15,000 BTU/HR

Hi-Medium-Low Regulator



CSA Certified



MH30T

Variable Output Of: 8,000-30,000 BTU/HR

Hi-Medium-Low Regulator

Run one burner or two



CSA Certified



MH45T

Variable Output Of: 8,000-45,000 BTU/HR

Hi-Medium-Low regulator

Run one, two or three burners



CSA Certified

PROPANE TORCHES

Model #	Description
F272601	MH400PT
F272602	MH500LPT
F272603	MH500DPT



Piezo ignition

Ergonomic grip handle with squeeze trigger



Ergonomic grip handle



- A MH500DPT**
Hand Held Torch
F272603
Piezo Ignition
36" handle w/molded arm support
10' hose
CSA certified
- B MH500LPT**
Hand Held Torch
F272602
Ergonomic grip
36" handle
10' hose & striker
CSA certified
- C MH400PT**
Hand Held Torch
F272601
Needle valve adjustment
31" total length
10' hose
CSA certified

SMALL WORKSITES



HS35LP

35,000 BTU/HR
F170700

Heats up to 800 square feet.
Operates up to 12 hours on a 20 lb. tank.

Tip-Over Switch
Safety Shut-Off
P.O.L. Connection
20 Ft. Hose with Regulator
Fully Assembled and Ready To Use

LARGE JOBSITES



HS125LP

125,000 BTU/HR
F170800

Heats up to 3,000 square feet.
Operates up to 17 hours on a 100 lb. tank.

Tip-Over Switch
20 Ft. Hose with Regulator
Welded Frame
Heat Shield
Safety Shut-Off

HS125NG

125,000 BTU/HR
F170850

Heats up to 3,000 square feet.
Operates on Natural Gas.

Tip-Over Switch
Welded Frame
Heat Shield
Safety Shut-Off



CSA Certified

SPECIFICATIONS:	HS35LP	HS125LP	HS125NG
Stock Number	F170700	F170800	F170850
Output (BTU/HR)	35,000	125,000	125,000
Fuel	Propane	Propane	Natural Gas
Propane Consumption (LBS/HR)	1.6 max	5.8 max	N/A with Natural Gas
Pressure Regulator Settings	22" w.c.	13.5" w.c.	7" w.c.
Flame Safety	Thermocouple Operated Gas Valve	Thermocouple Operated Gas Valve	Thermocouple Operated Gas Valve
Ignition	Piezo	Piezo	Piezo
Power Required	None	None	None
Hose/Regulator	20' with Regulator	20' with Regulator	Regulator Only
P.O.L./Excess Flow Check Valve	Yes	Yes	NA
Shipping Size (L x W x H)	12.4" x 10.24" x 34.25"	16.14" x 16.14" x 35.04"	16.14" x 16.14" x 35.04"
Shipping Weight (LBS)	25	42	42
Shipping Cube	1.85	4.24	4.24

FAK Replacement Parts

FAK REPLACEMENT PARTS

Model #	Description
F221899	Nozzle Kit

Replaces part #
27416 & 22201

HEATSTAR: HS50KT (03-current)
MR. HEATER: MH50KT (03-08)
DEWALT: DXH50K (13-current)



Model #	Description
F221900	Nozzle Kit

Replaces part #
28741 & 22202

HEATSTAR: HS75KT (03-current)
MR. HEATER: MH75KT (03-08)
DEWALT: DXH75KT (13-current)



Model #	Description
F221901	Nozzle Kit

Replaces part #
28742 & 22203

HEATSTAR: HS125KT (03-current)
MR. HEATER: MH125KT (03-08)



Model #	Description
F221902	Nozzle Kit

Replaces part #
28743 & 22204

HEATSTAR: HS175KT (03-current)
MR. HEATER: MH175KT (03-08)



Model #	Description
F221903	Nozzle Kit

Replaces part #
22109 & 22205

HEATSTAR: HS210KT (03-current)
MR. HEATER: MH210KT (03-08)



Model #	Description
F227416	Nozzle Kit

Replaces part #
27416 & 28710

MR. HEATER: MH50KR (09-current)



Model #	Description
F221878	Nozzle Kit

Replaces part #
28741 & 28711

MR. HEATER: MH75KTR (09-current)



Model #	Description
F221879	Nozzle Kit

Replaces part #
28742 & 28712

MR. HEATER: MH125KTR (09-current)
DEWALT: DXH135KT, DXH135HD (13-current)



Model #	Description
F221889	Nozzle Kit

Replaces part #
28743 & 28713

MR. HEATER: MH175KTR (09-current)



Model #	Description
F221891	Nozzle Kit

Replaces part #
22109 & 28714

MR. HEATER: MH210KTR (09-current)
DEWALT: DXH185KT, DXH190HD, DXH215HD(13-current)



FAK/LP Replacement Parts

FAK REPLACEMENT PARTS

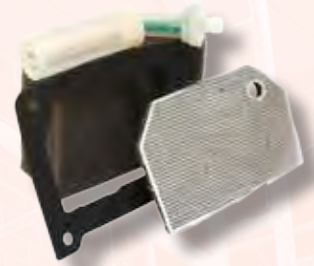
Model #	Description
F221887	Replacement Filter Kit (2009 models through current)

MR. HEATER: MH50KTR, MH75KTR, MH125KTR, MH175KTR, MH210KTR
CONTRACTOR SERIES: TS75KR, TS125KTR, TS175KTR, TS210KTR
CONTRACTOR PLUS: PA50KR, PA75KTR, PA175KTR, PA210KTR
HEATSTAR: HS50KT, HS75KT, HS125KT, HS175KT



Model #	Description
F263016	Replacement Filter Kit (2005 models through 2008)

MR. HEATER: MH50KT, MH75KT, MH125KT, MH175KT, MH210KT
HEATSTAR: HS50KT, HS75KT, HS125KT, HS175KT, HS210KT



Model #	Description
F263015	Replacement Filter Kit

MR. HEATER: MH50KT, MH75KT, MH125KT, MH175KT
HEATSTAR: HS50KT, HS75KT, HS125KT, HS175KT

ALL PRO: SPC-K50, SPC-K100, SPC-K150

UNIVERSAL: K50-FA, K100-FA, K150-FAT

NOTE: For Mr Heater/Heatstar 2003/04 production models



Model #	Description
F221803	Electrode Kit (2005 models and prior)

MR. HEATER: MH50KT, MH75KT, MH125KT, MH175KT
HEATSTAR: HS50KT, HS75KT, HS125KT, HS175KT

Replaces part #21803

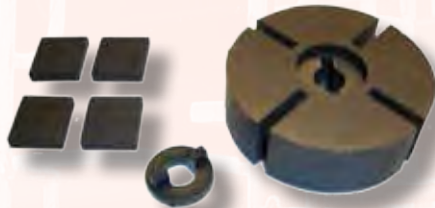


Model #	Description
F226831	Rotor Kit (2003 models through current)

MR. HEATER: MH50KT, MH75KT, MH125KT, MH175KT
HEATSTAR: HS50KT, HS75KT, HS125KT, HS175KT

ALL PRO: SPC-, SPC-K50, SPC-K100, SPC-K125, SPC-K150, SPC-K175

UNIVERSAL: K50-FA, K75, K100-FAT, K125, K150-FAT, K175



Model #	Description
F226865	Flame Sensor Kit

MR. HEATER: MH50KR and MH75KTR (2009-current)
 All Mr Heater 2003 - 2008

HEATSTAR: All Models
DeWALT: All Models

Replaces part #s:
 26903
 26924
 26925
 26920



Model #	Description
F221857	Electrode Kit (Kerosene 2006 models through current)

MR. HEATER: MH50KT, MH75KT, MH125KT, MH175KT, MH210KT
MR. HEATER: MH50KR, MH75KTR, MH125KTR, MH175KTR, MH210KTR
HEATSTAR: HS50KT, HS75KT, HS125KT, HS175KT, HS210KT



Replaces part #21819 and 22144

Model #	Description
F266842	Pump Adjustment Kit (2003 models through current)

MR. HEATER: MH50KT, MH75KT, MH125KT, MH175KT(2003-2008)
MR. HEATER: MH50KR, MH75KTR, MH125KTR, MH175KTR, MH210KTR
 (2009-present)
HEATSTAR: HS50KT, HS75KT, HS125KT, HS175KT
ALL PRO: SPC-K50, SPC-K100, SPC-K150
UNIVERSAL: K50-FA, K100-FA, K150-FA



LP Replacement Parts

SPARK PLUG

Model #	Description
F228794	Spark Plug

Replaces part #28774

MR. HEATER: MH170FAVT
HEATSTAR: HS170FAVT



SPARK PLUG

Model #	Description
F228795	Spark Plug

Replaces part #21083

MR. HEATER: MH85FAV (2003-08), MH125FAV (2003-CURRENT)
HEATSTAR: HS85FAV (2003-08), HS125FAV (2003-CURRENT)



HIGH LIMIT SWITCH

Model #	Description
F228797	High Limit Switch

Replaces part #21751

MR. HEATER: MH55FAV, MH85FAV
HEATSTAR: HS55FAV, HS85FAV



HIGH LIMIT SWITCH

Model #	Description
F228798	High Limit Switch

Replaces part #22003

MR. HEATER: MH125FAV
HEATSTAR: HS125FAV



HIGH LIMIT SWITCH

Model #	Description
F228796	High Limit Switch

Replaces part #26168

MR. HEATER: MH35FA, MH170FAVT, MH400FAVT
HEATSTAR: HS35FA, HS170FAVT, MH400FAVT



Accessories

UNIVERSAL FUEL FILTER

Model #	Description
F273699	Universal Fuel Filter

Required for use with all Portable Buddy and Big Buddy Heaters when attaching to a 20 lb. propane tank. Most commonly used with F273701(5') and F273702(12') Hose Assemblies



THERMOSTAT

Model #	Description
F261210	Thermostat - For portable kerosene (50KR only)

For portable Kerosene (50KR ONLY)



6V/800MA POWER ADAPTER

Model #	Description
F276127	6v/800mA Power Adapter

Use with Big Buddy and Tough Buddy heaters. Uses standard 110 outlet. Also powers products requiring 6VDC and up to 800mA current.



2 TANK HOOK UP KIT

Model #	Description
F273737	2 Tank Hook Up Kit

(30" Hose Assembly with Excess Flow Soft Nose P.O.L.'s on both ends x Full Flow Tee) - Most commonly used to hook multiple bulk tanks to most applications.



TANK FOOT

Model #	Description
F275228	Tank Foot (1 lb. propane cylinder)

(Fits 1 lb. propane cylinder) Fits portable throw-away propane cylinders; reduces risk of tipping cylinder while in use.



TANK FOOT

Model #	Description
F273169-6	TankFoot® Tank Stabilizer (6)
F273169-30	TankFoot® Tank Stabilizer (30)

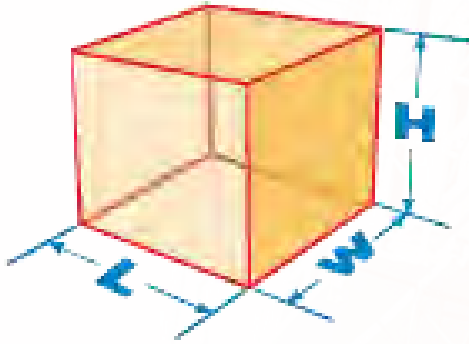
Fits 20lb., 30lb. and 40lb. cylinders; reduces risk of tipping cylinder while on jobsite and transporting in your R.V., pick-up, car, etc.



REFERENCE INFORMATION

HOW MUCH HEAT DO YOU NEED?

You can calculate the amount of BTUs required by using the following method:



$$\frac{\text{DESIRED INSIDE TEMPERATURE} - \text{OUTSIDE TEMPERATURE}}{\text{= TEMPERATURE INCREASE}}$$

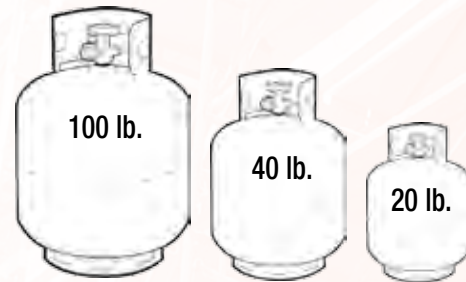
1. Measure the space's dimension to determine cubic feet.
(Length x Width x Height = Cubic Feet)
2. Subtract the outside temperature from the desired inside temperature to determine the temperature increase.
- 3a. If you have measured temperature in FAHRENHEIT, calculate the required BTUs with this formula:
(Cubic Feet x Temperature Increase x .133 = Required BTUs)
- 3b. If you have measured temperature in CELSIUS, calculate the required BTUs with this formula:
(Cubic Feet x Temperature Increase x .2394 = Required BTUs)

HEAT RISE-'BTU' REQUIREMENT REFERENCE CHART

SELECT CUBIC FEET SIZE OF WORK AREA OR L x W x H	HEATER BY 'BTU' REQUIRED: K= ,000						
	CUBIC FEET	60K	90K	120K	150K	180K	240K
25,000	60K	90K	120K	150K	180K	240K	
20,000	48K	72K	96K	120K	144K	192K	
15,000	36K	54K	72K	90K	108K	144K	
10,000	24K	36K	48K	60K	72K	96K	
7,500	18K	27K	36K	45K	54K	72K	
5,000	12K	18K	24K	30K	36K	48K	
2,500	6K	9K	12K	15K	18K	24K	
DESIRED TEMPERATURE RISE BETWEEN OUTSIDE & INSIDE							
CELSIUS	10C	15C	20C	25C	30C	40C	
FAHRENHEIT	18F	27F	36F	45F	54F	72F	

NOTE: Estimated heating areas information included in this brochure assumes the area to be heated has a 10 ft. ceiling.

PROPANE/LP VAPORIZATION RATE



PROPANE HEATER CYLINDER SELECTION CHART

Pounds of Propane in Cylinder	Maximum Continuous BTU Output Per Hour at Various Temperatures		
	0F	20F	40F
100	113,000	167,000	214,000
90	104,000	152,000	200,000
80	94,000	137,000	180,000
70	83,000	122,000	160,000
60	75,000	109,000	140,000
50	64,000	94,000	125,000
40	55,000	79,000	105,000
30	45,000	66,000	85,000
20	36,000	51,000	69,000
10	28,000	38,000	49,000

ABOUT ENERCO

Headquartered in Cleveland, Ohio, Enerco manufactures a complete line of heating products for commercial, industrial, home and shop applications.

Products include propane and kerosene forced air heaters, radiant and convection construction heaters, garage and shop heaters, low and high intensity custom designed overhead heating systems, and custom designed systems for industrial applications.

PHONE: 866-447-2194
FAX: 800-321-0552
www.heatstarbyenerco.com

