



# SBC635MBINK



33.5" x 24" x 25.38" (H x W x D)

Built-in beer dispenser in black, auto defrost w/digital thermostat; sold without tap kit for do-it-yourselfers who install their own systems

### Highlights:

Allows you to install your own custom tapping equipment

Full-sized capacity to hold half, quarter, 1/6 or mini kegs

Designed for built-in installation under the counter

Digital thermostat lets you set the perfect temperature for any brew

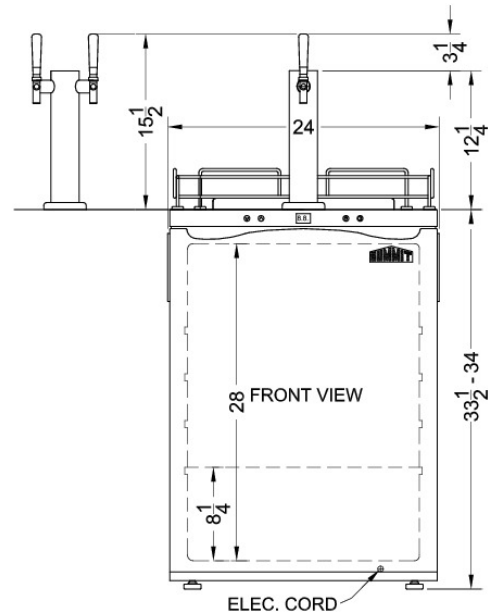
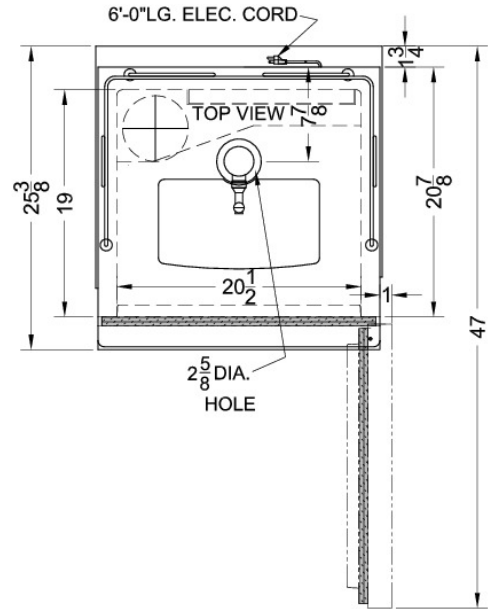
### Product Features:

|                                     |   |
|-------------------------------------|---|
| Full-sized beer dispenser           | Large 5.6 cu.ft. interior can accept a full half barrel keg, two 1/6 barrel kegs, or a pony keg   |
| Built-in capable                    | Make the best use of space by installing your appliance under the counter; NOTE: if installing flush with wall or cabinets, unit will require extra space due to the door design. Width should be 25" to 25 1/4". For more information, see the user manual |
| NO TAP KIT                          | Install your own tapping equipment for a customized beer cooler   |
| Digital thermostat                  | Electronic controls ensure easy temperature management, with an external readout in Celsius or Fahrenheit   |
| Ideal beer temperature              | Operates between 33° and 50°F to keep a variety of beers stored at just the right serving temperature   |
| Automatic defrost                   | Reduced maintenance with auto defrost system  |
| Reversible door                     | User-reversible door swing for added flexibility  |
| Fully finished black cabinet        | Allows the unit to be used freestanding   |
| Casters included (ship unassembled) | To make the beer dispenser portable, install this set of 2 1/2" high locking casters  |



## SBC635MBINK Specifications:

| Overview                   |                |
|----------------------------|----------------|
| Height                     | 33.5"          |
| Width                      | 24.0"          |
| Width with Door Open       | 25.0"          |
| Depth                      | 25.38"         |
| Depth with door at 90°     | 47.0"          |
| Capacity                   | 5.6 cu.ft.     |
| Defrost Type               | Automatic      |
| Door                       | Black          |
| Cabinet                    | Black          |
| US Electrical Safety       | ETL            |
| Canadian Electrical Safety | ETL-C          |
| Energy Usage/Year          | 310.0kWh/year  |
| Amps                       | 0.86           |
| Voltage/Frequency          | 115 V AC/60 Hz |
| Weight                     | 100.0 lbs.     |
| Shipping Weight            | 130.0 lbs.     |
| Parts & Labor Warranty     | 1 Year         |
| Compressor Warranty        | 5 Years        |
| Beer Dispenser             |                |
| Door Swing                 | RHD            |
| Reversible                 | Yes            |
| Thermostat Type            | Digital        |
| Fan Type                   | Exterior       |
| Refrigerant                | R600a          |
| Refrigerant Amount         | 1.13 oz.       |
| High Side PSI              | 250.0          |
| Low Side PSI               | 110.0          |
| Inter Height               | 28.0"          |
| Interior Width             | 20.5"          |
| Interior Depth             | 19.0"          |
| Compressor Step Height     | 8.25"          |
| Level Legs Qty             | 4              |
| Wheel Qty                  | 4              |
| Temperature Range          | 33             |



SUMMIT APPLIANCE DIVISION FELIX STORCH, INC.

770 Garrison Avenue, Bronx, NY 10474 USA TEL 718-893-3900 FAX 844-478-8799

info@summitappliance.com



www.summitappliance.com