







Assembly Instructions	Instrucciones de Ensamblaje	Directives d'assemblage
Customer Service US: 1-800-645-2986	Servicio de atención al Cliente México: 01.800.681.6940	Service à la clientèle Canada: 888-645-2986



SCRUBBER DRYER
Model #: 641244

TECHNICAL Specification	
Clean width	20"
Squeegee Width	30.7"
Work capacity	24218 sq.ft/hr
Pressure on the brushes	77lbs
Brush RPM	180
Brush motor	24V/550W
Suction motor	24V/390W
Traction motor	24V/120W
Drive speed	0-2.8 miles/h
Solution tank	14.6 gallon
Recovery tank	17.2 gallon
Machine dimensions (Excluding squeegee)	51" x 21.65" x 40.6" (L x W x H)
Battery	2 x 115Ah
Battery weight	80lb x 2
Machine weight	255.6 lb

ORDER YOUR CLEANING CHEMICALS & PADS
Visit www.globalindustrial.com or call 1-800-645-1232

CLEANING CHEMICALS				PADS (Case of 5)	
					
Floor Cleaner Model 640404 (Case of 4)	Floor Stripper Model 640405 (Case of 6)	Multi Purpose Degreaser Model 640407 (Case of 4)	Heavy-Duty Cleaner Degreaser Model 640408 (Case of 4)	20" Scrubbing Pad- Model 261155GN	20" Buffing Pad- Model 261185RD

IMPORTANT INSTRUCTIONS

PLEASE READ THE INSTRUCTIONS CAREFULLY PRIOR TO USING THIS PRODUCT.

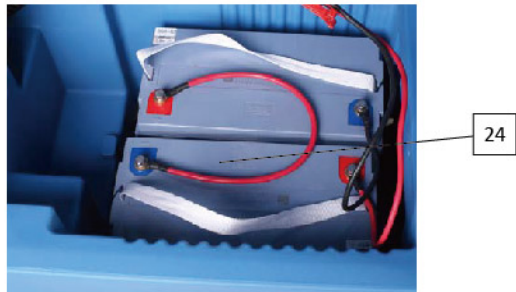
WARNING - to reduce the risk of fire, electrical shock, and/or injury/damage to persons or property:

- Do not operate the machine unless trained and authorized
- Flammable materials can cause an explosion or fire. DO NOT use flammable materials in tank or as cleaning agent in machine.
- Flammable materials or reactive metals can cause explosion or fire. DO NOT use to clean up flammable or combustible spills
- This machine is intended for commercial use. It is constructed for use in an indoor environment and is not intended for any other use.
- Extreme caution and supervision is necessary when used near children or unqualified personnel
- Conditions of use: room temperature between 0°C and 40°C with relative humidity between 30 and 95%.
- Do not place objects on the Unit or allow objects to obstruct the inlet or outlet openings. Do not operate in close proximity to walls, curtains, etc.
- Do not use acid solutions, which may damage the machine or harm the operator.
- Always turn off and unplug the battery prior to assembling, performing routine maintenance, or when not in use.
- The use of attachments or accessories is not recommended or sold by the Global Industrial may cause personal injury and/or property damage.
- DO NOT attempt to fix the machine by yourself. All repairs must be made by an authorized personnel
- Do not modify the machine
- Avoid moving parts. Do not wear loose fitting clothing while using/servicing the machine
- Do not put any flammable materials into solution tank. This can cause an explosion or a fire. Only use approved cleaning chemicals. Contact Global Industrial (1-800-645-1232) for recommendations on proper Cleaning Solutions.
- Empty the Solution and Recovery tank before storing the machine
- This machine shall be stored indoors only
- Do not use the machine on surfaces with an inclination greater than the one shown on the plate.

READ AND SAVE THESE INSTRUCTIONS

20" Auto Floor Scrubber

MACHINE COMPONENTS



- 1) Recovery tank cover
- 2) Recovery tank
- 3) Solution tank cap
- 4) Solution tank
- 5) Head Assembly
- 6) Pad Driver or Brush
- 7) Rubber Skirt
- 8) Wheel

- 9) Recovery tank Drain
- 10) water level indicator
- 11) Vacuum hose
- 12) Squeegee Assembly
- 13) Squeegee assembly Lever
- 14) Hand brake
- 15) Key switch
- 16) Menu button

- 17) Speed control knob
- 18) Control lever
- 19) Float shut off
- 20) Vacuum hole
- 21) Vacuum Intake
- 22) Suction motor
- 23) Power plug
- 24) Battery

20" Auto Floor Scrubber

⚠ WARNING

⚠ WARNING

Batteries emit hydrogen gas. Explosion or fire can result from hydrogen gas. Keep sparks and open flames away! Keep battery compartment open when charging.

⚠ WARNING

Do not operate machine unless you have read and understand this manual.

⚠ WARNING

Do not use your fingers to wipe or remove debris from the blades, as injury may occur.

⚠ WARNING

Flammable materials can cause an explosion or fire. DO NOT use flammable materials in tanks as cleaning agent.

⚠ WARNING

Always empty Recovery tank before filling solution tank.

⚠ WARNING

Always empty and clean the recovery tank after using the machine.

⚠ WARNING

Do not fill the solution tank before emptying the recovery tank.

⚠ WARNING

Before performing any maintenance on the machine, be sure that the power is turned off.

⚠ WARNING

Repairs are to be completed by Authorized Personnel/Service Centers only.

⚠ WARNING

Do not put any flammable materials into solution tank. This can cause an explosion or a fire. Only use approved cleaning chemicals. Contact Global Industrial (1-800-645-1232) for recommendations on proper Cleaning Solutions.

⚠ WARNING

Foam must not enter the float shut-off screen, or damage can occur to the vacuum motor. Foam will not activate the machine's float shut-off device.

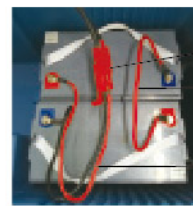
PACKAGE CONTENTS:

- 1) Machine
- 2) Squeegee Assembly
- 3) Pad Driver
- 4) Battery
- 5) Charger
- 6) Jump cable & batteries connector cable

Machine Set-up/Operation Prior to ach use

- 1) Be sure to connect the 36V battery
- 2) Check that squeegee assembly is properly installed
- 3) Check that Pad Driver is properly installed
- 4) The working surface is sufficient to support the weight of the machine
- 5) Always close Recovery Tank cover fully before use

CONNECTING THE BATTERIES



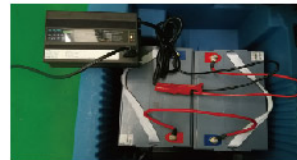
Power cable

Jumper cable

Battery connector cable

1. Connect the batteries in series, using the jumper cables supplied - to the poles "+" and "-".
2. Connect the battery connector cable to the terminal poles "+" and "-", red to "+", black to "-"

BATTERY CHARGING



1. Disconnect the power plug; from battery connector cable
2. Connect the battery connector cable to the charger ;
3. Connect the charger to the wall outlet
 - Red ON or Flashing = Fault
 - Yellow Flashing = No battery connected
 - Yellow on = Normal charging
 - Green on = Fully charged

⚠ WARNING

- Use only approved chargers with the following specifications
 - Automatic shut off circuit
 - Deep cycle charging
 - Output current of 10-20 amps
 - Output voltage of 24 volts

⚠ CAUTION

- For the best performance, keep batteries charged at all times. Do not let them sit in a discharged condition.

⚠ WARNING

- Do not place battery charger on wet surface or in a puddle when operating charger.

20" Auto Floor Scrubber

⚠ WARNING

- A highly explosive gas mixture is produced when charging batteries.

⚠ WARNING

- Battery acid is highly caustic, always wear protective gloves and eye protection.
- Do not tilt battery as otherwise acid may flow out of the vent openings.

⚠ WARNING

- No fire, sparks, naked lights or smoking:
- Avoid creating sparks when handling cables and electrical equipment.
- Avoid short circuits.

⚠ CAUTION

- Wear eye protection.

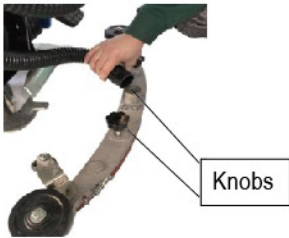
⚠ WARNING

- Keep acid and batteries away from children.

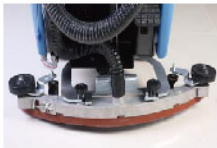
⚠ WARNING

- Batteries are dangerous! Batteries emit hydrogen gas and an explosion or fire can result. Keep sparks and fire away from batteries at all time . When charging the machine, make sure the battery compartment is left open.

SQUEEGEE INSTALLATION



- Loosen the 2 knobs on the squeegee assembly.
- Connect the vacuum hose to the Vacuum hole in the squeegee assembly




- ◆ Align the knobs with the slots and tighten the knobs

PAD DRIVER/BRUSH COUPLING



Disengaged Pedal

- Turn off the machine
- Place the pad driver/Brush under the head assembly.
- lower the head assembly to the floor by stepping on the foot pedal and disengaging it

- Line up three studs on the pad driver/brush to the holes on the head assembly
- Turn on the machine
- Make sure the speed knob is in the slowest position  , pull the control lever back, so that the pad driver/brush locks in completely

PAD DRIVER/BRUSH UNCOUPLING

- Raise the head assembly by stepping on the foot pedal and engaging it , Long press "MENU" for more than 5 seconds after boot, Automatic unloading the brush.



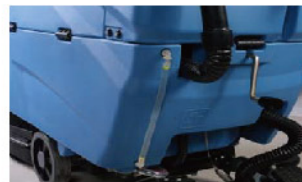
- Or turn off the power and wiggle the pad driver/brush back and forth ,clockwise/counterclockwise until it becomes loose.
- If using a pad driver, first attach the appropriate pad to the pad driver surface

SOLUTION TANK


- Remove the solution tank cap and fill with clean water for regular cleaning surface. For deep and dirty surface, Contact Global Industrial (1-800-645-1232) for recommendations on proper Cleaning Solutions.




- Check water level indicator for water level



OPERATION


- Turn the Key to ON position
Display information when active:
Brand: GLOBAL
Software version: Ver .22
Display information when work:
Battery level:  (flashing at low level)
Total functioning time: 00000: 00 (hour: minute)
- Short press "MENU", shows the battery voltage.



- To make the machine move forward, pull the control lever back, adjusting the speed adjuster  To move faster, rotate the adjuster clockwise; anticlockwise to move slower.

20" Auto Floor Scrubber



- To make the machine move backward, push the control lever forward, adjusting the speed adjuster . To move faster, rotate the adjuster clockwise; anticlockwise to move slower.

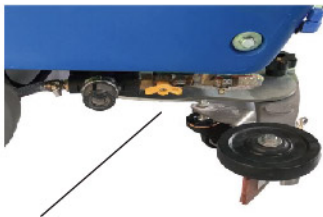


pedal

- Lower the head assembly to the floor by stepping on the foot pedal and disengage it, pull the control lever back or push the control lever forward, brush motor working.



- lower the squeegee assembly by lowering the squeegee assembly lever, vacuum motor starts working. At this time, the machine can only move forward.



- Adjust the water flow with the water flow lever
- When finished,
- Raise the head assembly from the floor by stepping on the foot pedal and engage it, brush motor will shut off.
- Raise the squeegee assembly by raising the squeegee lever, vacuum motor will shut off after delay.

MAINTENANCE

WARNING

Before performing any maintenance on the machine, be sure that the power is turned off, or the batteries disconnected.

WARNING

Repairs are to be completed by authorized Service Centers only. Any repairs by unauthorized persons will void warranty.

DAILY MAINTENANCE

- wipe the whole machine with clean/damp cloth.



- Empty the solution tank by opening solution drain plug location on the bottom.



- Drain and rinse out recovery tank with clean water.



- Clean the vacuum filter by removing the vacuum intake cap
- Remove the Pad Driver/Brush and Squeegee assembly and Clean with clean water
- Check the battery charge

MONTHLY MAINTENANCE

- Flush out solution tank with clean water



- Remove the clear cap and the solution tank filter. Clean the filter with clean water



- Clean rubber skirt on the brush head assembly by removing the spring lock
- motors should be check every 250 hours. Turn on/ off both Pad/Brush and Vacuum motor to ensure The motors are working properly

SQUEEGEE RUBBER BLADE REPLACEMENT

- Remove the squeegee assembly from the unit (refer to squeegee assembly installation).



20" Auto Floor Scrubber

- Unlock the spring lock and slide out the blades.
- Replace with new blade and re-assemble.

BATTERY MAINTENANCE

- This machine use maintenance-free batteries: High performance, long life, no pollution, maintenance-free, safe and reliable.
- Always follow the battery charging directions as outlined in the BATTERY CHARGING section of this manual
- Keep battery tops and terminals free from corrosion. A strong solution of baking soda and water is the best way to keep the batteries corrosion free. DO NOT ALLOW THE BAKING SODA/WATER SOLUTION TO ENTER THE BATTERY CELLS.
- Use a wire brush with the baking soda solution to properly clean the battery posts and connections
- Check battery connections for wear and loose terminals. Replace if necessary.

⚠ DISPOSAL

- Old batteries must be disposed of in compliance with the local specific regulations.
- Never dispose of old batteries as domestic waste!

MACHINE STORAGE

- store the machine indoor in a dry location
- always store the machine with the squeegee and pad/driver raised off the floor
- Always drain the solution and recovery tank fully before storing, especially when storing in a cold location

TROUBLE SHOOTING

Problem	Cause	Solution
No Power	-Unit not connect the power, batteries not charged	-Connect the battery, charge battery
Error code	"Charging"	symbol indicates Lack of electricity, please charge.
	"SuctionErr"	symbol indicates a failure of suction motor. Please check the suction motor and its associated circuitry. (the intake of suction motor or recovery tank is blocked), may be Loss of electricity.
	"BrushErr"	symbol indicates a failure of brush motor. Please check the brush motor and its associated circuitry.
	"DriveErr"	symbol indicates failure of valve, relay, brake . Please check valve, relay, break and their associated circuitry.
"votltsErr"		symbol indicates the battery voltage exceeds 30 volts, please check the battery and its associated circuitry.
Little or no solution flow	-Water flow tap closed -Clogged solution tank filter -Empty solution tank	-open water flow tap -clean solution tank filter -fill the solution tank
Poor water pickup	-Squeegee clogged -Squeegee blades worn -Squeegee not mounted correctly -Vacuum hose have a hole or is loose	- Clean debris off squeegee with damp towel - Install new squeegee blades - Confirm that the squeegee assembly is securely fastened to the machine and not loose fitting - Check hose connections and make sure they are firm. Replace hose if damaged.
	-Vacuum hose may be clogged - Drain hose stopper is loose - Recovery tank is opened -Recovery tank is full - Float shut off is clogged - Vacuum motor is loose	- Check hose for debris and remove any clog. - Tighten drain plug. - Confirm the clear recovery tank lid is securely in place - Drain recovery tank - Remove float shut off from inside recovery tank and remove any debris - Tighten vac motor mounting screws. DO NOT overtighten or damage will occur.