

**Assembly Instructions**

**Instrucciones de Ensamblaje**

**Directives d'assemblage**

Customer Service  
US: 1-800-645-2986

Servicio de atención al Cliente  
México: 01.800.681.6940

Service à la clientèle  
Canada: 888-645-2986



**20" AUTO FLOOR SCRUBBER**  
Model #: 641264

**TECHNICAL Specification**

Clean width	20"
Squeegee Width	30.7"
Work capacity	22000sq.ft/hr
Pressure on the brushes	77lbs
Brush RPM	180
Brush motor	24V/550W
Suction motor	24V/390W
Solution tank	15gallon
Recovery tank	17gallon
Machine dimensions (Excluding squeegee)	51" x 21.65" x 40.6" (L x W x H)
Battery	2 x 115ah
Battery weight	80lb x 2
Machine weight	255.6 lb

**ORDER YOUR CLEANING CHEMICALS & PADS**

Visit [www.globalindustrial.com](http://www.globalindustrial.com) or call 1-800-645-1232

**CLEANING CHEMICALS**



**PADS (Case of 5)**

20" Scrubbing Pad- Model 281185GN  
20" Buffing Pad- Model 281185RD



**IMPORTANT INSTRUCTIONS**

**PLEASE READ THE INSTRUCTIONS CAREFULLY PRIOR TO USING THIS PRODUCT.**

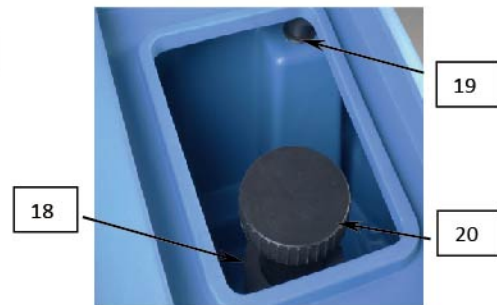
**WARNING** - to reduce the risk of fire, electrical shock, and/or injury/damage to persons or property:

- Do not operate the machine unless trained and authorized
- Flammable materials can cause an explosion or fire. DO NOT use flammable materials in tank or as cleaning agent in machine.
- Flammable materials or reactive metals can cause explosion or fire. DO NOT use to clean up flammable or combustible spills
- This machine is intended for commercial use. It is constructed for use in an indoor environment and is not intended for any other use.
- Extreme caution and supervision is necessary when used near children or unqualified personnel
- Conditions of use: room temperature between 0°C and 40°C with relative humidity between 30 and 95%.
- Do not place objects on the Unit or allow objects to obstruct the inlet or outlet openings. Do not operate in close proximity to walls, curtains, etc.
- Do not use acid solutions, which may damage the machine or harm the operator.
- Always turn off and unplug the battery prior to assembling, performing routine maintenance, or when not in use.
- The use of attachments or accessories is not recommended or sold by the Global Industrial may cause personal injury and/or property damage.
- DO NOT attempt to fix the machine by yourself. All repairs must be made by an authorized personnel
- Do not modify the machine
- Avoid moving parts. Do not wear loose fitting clothing while using/servicing the machine
- Do not put any flammable materials into solution tank. This can cause an explosion or a fire. Only use approved cleaning chemicals. Contact Global Industrial (1-800-645-1232) for recommendations on proper Cleaning Solutions.
- Empty the Solution and Recovery tank before storing the machine
- This machine shall be stored indoors only
- Do not use the machine on surfaces with an inclination greater than the one shown on the plate.

**READ AND SAVE THESE INSTRUCTIONS**

# 20" Auto Floor Scrubber

## MACHINE COMPONENTS



- 1) Recovery tank cover
- 2) Recovery tank
- 3) Solution tank cap
- 4) Solution tank
- 5) Head Assembly
- 6) Pad Driver or Brush
- 7) Rubber Skirt
- 8) Wheel

- 9) Recovery tank Drain
- 10) water level indicator
- 11) Vacuum hose
- 12) Squeegee Assembly (Front/Rear Squeegee)
- 13) Squeegee assembly Lever
- 14) Charging Port
- 15) Key switch
- 16) Menu button

- 17) Brush button
- 18) Float shut off
- 19) Vacuum hole
- 20) Vacuum Intake
- 21) Suction motor
- 22) Power plug
- 23) Battery

# 20" Auto Floor Scrubber

## **⚠ WARNING**

### **⚠ WARNING**

Do not operate machine unless you have read and understand this manual.

### **⚠ WARNING**

Do not use your fingers to wipe or remove debris from the blades, as injury may occur.

### **⚠ WARNING**

Flammable materials can cause an explosion or fire. DO NOT use flammable materials in tanks as cleaning agent.

### **⚠ WARNING**

Always empty Recovery tank before filling solution tank

### **⚠ WARNING**

Always empty and clean the recovery tank after using the machine.

### **⚠ WARNING**

Do not fill the solution tank before emptying the recovery tank

### **⚠ WARNING**

Before performing any maintenance on the machine, be sure that the power is turned off.

### **⚠ WARNING**

Repairs are to be completed by Authorized Personnel/Service Centers only

### **⚠ WARNING**

Do not put any flammable materials into solution tank. This can cause an explosion or a fire. Only use approved cleaning chemicals. Contact Global Industrial (1-800-645-1232) for recommendations on proper Cleaning Solutions.

### **⚠ WARNING**

Foam must not enter the float shut-off screen, or damage can occur to the vacuum motor. Foam will not activate the machine's float shut-off device.

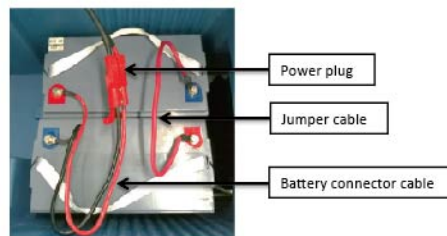
## **PACKAGE CONTENTS:**

- 1)Machine
- 2)Squeegee Assembly
- 3)Pad Driver
- 4)Battery
- 5)Charger
- 6)Jump cable & batteries connector cable

## **MACHINE SET-UP/OPERATION PRIOR TO ACH USE**

- 1)Be sure to connect the 24V battery
- 2)Check that squeegee assembly is properly installed
- 3)Check that Pad Driver is properly installed
- 4)The working surface is sufficient to support the weight of the machine
- 5)Always close Recovery Tank cover fully before use

## **CONNECTING THE BATTERIES**



1. Connect the batteries in series, using the jumper cables supplied - to the poles "+" and "-".
2. Connect the battery connector cable to the terminal poles "+" and "-", red to "+", black to "-".

## **BATTERY CHARGING**



1. Disconnect the power plug;
2. Connect the battery connector cable to the charger ;
3. Connect the charger to the power supply.
  - Red ON or Flashing = Fault
  - Yellow Flashing = No battery connected
  - Yellow on = Normal charging
  - Green on = Fully charged

### **⚠ WARNING**

Use only approved chargers with the following specifications

- Automatic shut off circuit
- Deep cycle charging
- Output current of 10-20 amps
- Output voltage of 24 volts

### **⚠ CAUTION**

For the best performance, keep batteries charged at all times. Do not let them sit in a discharged condition.

### **⚠ WARNING**

Do not place battery charger on wet surface or in a puddle when operating charger.

#### **RISK OF EXPLOSION:**

A highly explosive gas mixture is produced when charging batteries.

# 20" Auto Floor Scrubber

## ⚠ WARNING

- Battery acid is highly caustic, always wear protective gloves and eye protection.
- Do not tilt battery as otherwise acid may flow out of the vent openings.

## ⚠ WARNING

- No fire, sparks, naked lights or smoking:
- Avoid creating sparks when handling cables and electrical equipment.
  - Avoid short circuits.

## ⚠ CAUTION

Wear eye protection.

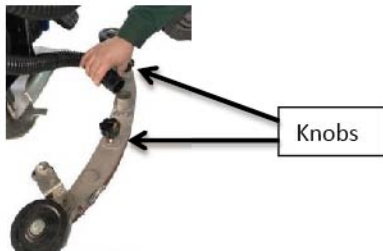
## ⚠ WARNING

Keep acid and batteries away from children.

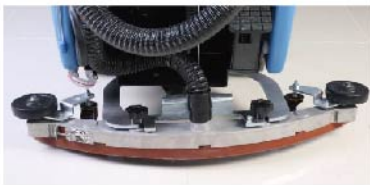
## ⚠ WARNING

Batteries are dangerous! Batteries emit hydrogen gas and an explosion or fire can result. Keep sparks and fire away from batteries at all time . When charging the machine, make sure the battery compartment is left open.

## SQUEEGEE INSTALLATION



Loosen the 2 knobs on the squeegee assembly.  
Connect the vacuum hose to the Vacuum hole in the squeegee assembly



Align the knobs with the slots and tighten the knobs

## PAD DRIVER/BRUSH COUPLING



- Turn off the machine
- Place the pad driver/Brush under the head assembly.
- lower the head assembly to the floor by stepping on the foot pedal and

disengaging it

- Line up three studs on the pad driver/brush to the holes on the head assembly
- Turn on the machine
- Press the brush button , brush motor will start working, so that the pad driver/brush locks in completely

## PAD DRIVER/BRUSH UNCOUPLING

Raise the head assembly by stepping on the foot pedal and engaging it , Long press "MENU" for more than 5 seconds after boot, Automatic unloading the brush.



Or turn off the power and wiggle the pad driver/brush back and forth ,clockwise/counterclockwise until it becomes loose.

- If using a pad driver, first attach the appropriate pad to the pad driver surface

## SOLUTION TANK



Remove the solution tank cap and fill with clean water for regular cleaning surface. For deep and dirty surface, Contact Global Industrial (1-800-645-1232) for recommendations on proper Cleaning Solutions.



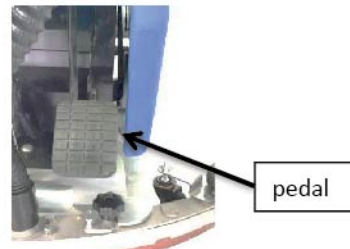
- Check water level indicator for water level

## OPERATION

- Turn the Key to ON position  
Display information when active:  
Brand: GLOBAL  
Software version: Ver .XX  
Display information when work:

Battery level: ██████████ (flashing at low level)

Total functioning time: 00000: 00 (hour: minute)  
Short press "MENU", shows the battery voltage.

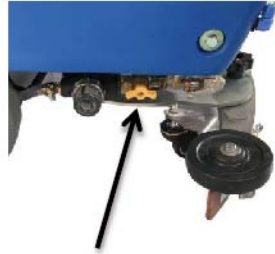


- Lower the head assembly to the floor by stepping on the foot pedal and disengage it, press the brush button, brush motor will start working.

# 20" Auto Floor Scrubber



- lower the squeegee assembly by lowering the squeegee assembly lever, vacuum motor starts working.



- Adjust the water flow with the water flow lever

- When finished,
- Press brush button again, brush motor will shut off, then raise the head assembly from the floor by stepping on the foot pedal and engage it.
- Raise the squeegee assembly by raising the squeegee lever, vacuum motor will shut off after delay.

## MAINTENANCE

### **⚠ WARNING**

Before performing any maintenance on the machine, be sure that the power is turned off, or the batteries disconnected.

### **⚠ WARNING**

Repairs are to be completed by authorized Service Centers only. Any repairs by unauthorized persons will void warranty.

### Daily maintenance

- wipe the whole machine with clean/damp cloth



- Empty the solution tank by opening solution drain plug location on the bottom



- Drain and rinse out recovery tank with clean water



- Clean the vacuum filter by removing the vacuum intake cap
- Remove the Pad Driver/Brush and Squeegee assembly and Clean with clean water
- Check the battery charge, Timely charging

## MONTHLY MAINTENANCE

- Flush out solution tank with clean water



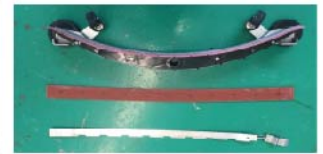
- Remove the clear cap and the solution tank filter. Clean the filter with clean water



- Clean rubber skirt on the brush head assembly by removing the spring lock

- motors should be check every 250 hours. Turn on/ off both Pad/Brush and Vacuum motor to ensure the motors are working properly

## SQUEEGEE RUBBER BLADE REPLACEMENT



- Unlock the spring lock and slide out the blades
- Replace with new blade and re-assemble.

## BATTERY MAINTENANCE

We are using maintenance-free batteries: High performance, long life, no pollution, maintenance-free, safe and reliable.

- Always follow the battery charging directions as outlined in the BATTERY CHARGING section of this manual
- Keep battery tops and terminals free from corrosion. A strong solution of baking soda and water is the best way to keep the batteries corrosion free. **DO NOT ALLOW THE BAKING SODA/WATER SOLUTION TO ENTER THE BATTERY CELLS.**
- Use a wire brush with the baking soda solution to properly clean the battery posts and connections
- Check battery connections for wear and loose terminals. Replace if necessary.

### **⚠ DISPOSAL**

- Old batteries must be disposed of in compliance with the local specific regulations.
- Never dispose of old batteries as domestic waste!

## MACHINE STORAGE

- store the machine indoor in a dry location
- always store the machine with the squeegee and pad/driver raised off the floor
- Always drain the solution and recovery tank fully before storing, especially when storing in a cold location

# 20" Auto Floor Scrubber

## TROUBLE SHOOTING

Problem	Cause	Solution
No Power	-Unit not connect the power, batteries not charged	- Connect the battery, charge battery
Error code	<p>"Charging"</p> <p>"SuctionErr"</p> <p>"BrushErr"</p> <p>"votltsErr"</p>	<p>symbol indicates Lack of electricity, please charge.</p> <p>symbol indicates a failure of suction motor. Please check the suction motor and its associated circuitry.(the intake of suction motor or recovery tank is blocked), may be Loss of electricity.</p> <p>symbol indicates a failure of brush motor. Please check the brush motor and its associated circuitry.</p> <p>symbol indicates the battery voltage exceeds 30 volts, please check the battery and its associated circuitry.</p>
Little or no solution flow	<p>-Water flow tap closed</p> <p>-Clogged solution tank filter</p> <p>-Empty solution tank</p>	<p>-open water flow tap</p> <p>-clean solution tank filter</p> <p>-fill the solution tank</p>
Poor water pickup	<p>-Squeegee clogged</p> <p>-Squeegee blades worn</p> <p>-Squeegee not mounted correctly</p> <p>-Vacuum hose have a hole or is loose</p> <p>-Vacuum hose may be clogged</p> <p>- Drain hose stopper is loose</p> <p>- Recovery tank is opened</p> <p>-Recovery tank is full</p> <p>- Float shut off is clogged</p> <p>- Vacuum motor is loose</p>	<p>- Clean debris off squeegee with damp towel</p> <p>- Install new squeegee blades</p> <p>- Confirm that the squeegee assembly is securely fastened to the machine and not loose fitting</p> <p>- Check hose connections and make sure they are firm. Replace hose if damaged.</p> <p>- Check hose for debris and remove any clog.</p> <p>- Tighten drain plug.</p> <p>- Confirm the clear recovery tank lid is securely in place</p> <p>- Drain recovery tank</p> <p>- Remove float shut off from inside recovery tank and remove any debris</p> <p>- Tighten vac motor mounting screws. DO NOT overtighten or damage will occur.</p>