



# CASTER KIT MOUNTING INSTRUCTIONS

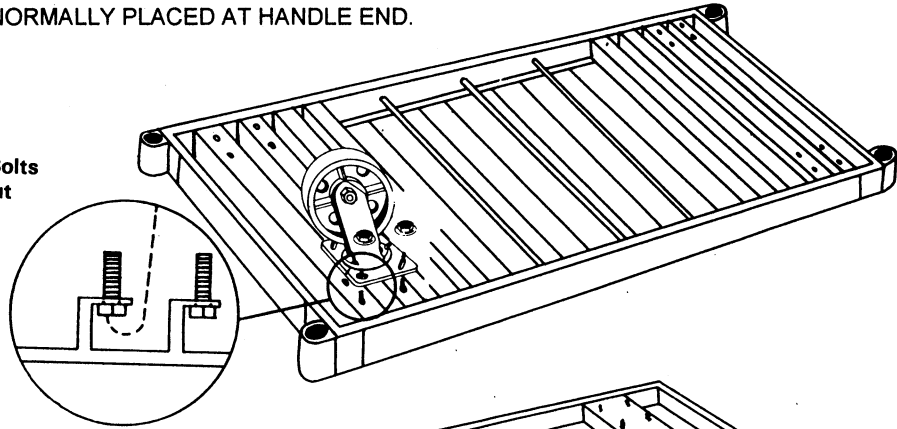
## NOTE:

THE HARDWARE PACKAGE CONTAINS HARDWARE FOR (4) DIFFERENT PLATFORM TRUCKS. THERE WILL BE EXCESS HARDWARE. SWIVEL CASTERS ARE NORMALLY PLACED AT HANDLE END.

### ALUMINUM DECK:

#### REQUIRED:

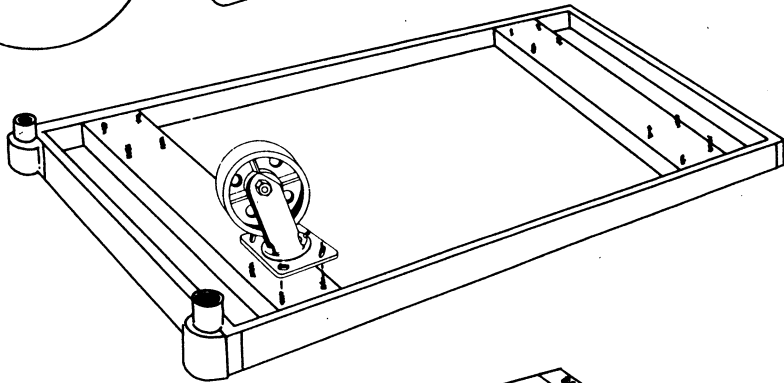
- 16 -  $\frac{1}{8}$ " x  $\frac{3}{4}$ " Hex Head Bolts
- 16 -  $\frac{1}{8}$ " Locking Flange Nut



### STEEL DECK:

#### REQUIRED:

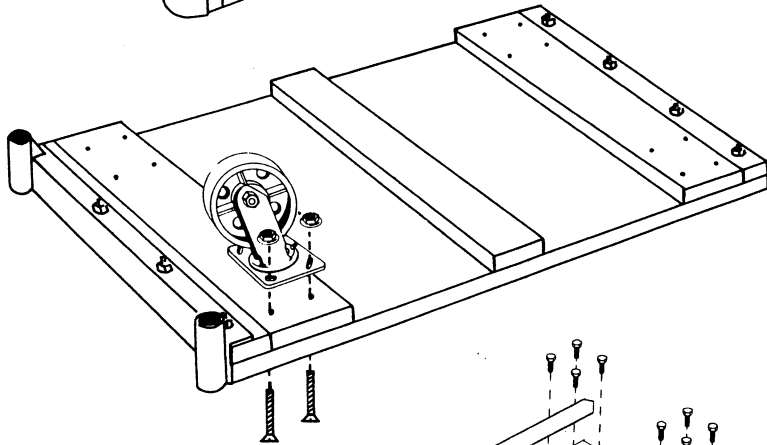
- 16 -  $\frac{1}{8}$ " Flat Washers
- OR
- 16 -  $\frac{1}{8}$ " x  $\frac{3}{4}$ " Hex Head Bolt



### WOOD DECK:

#### REQUIRED:

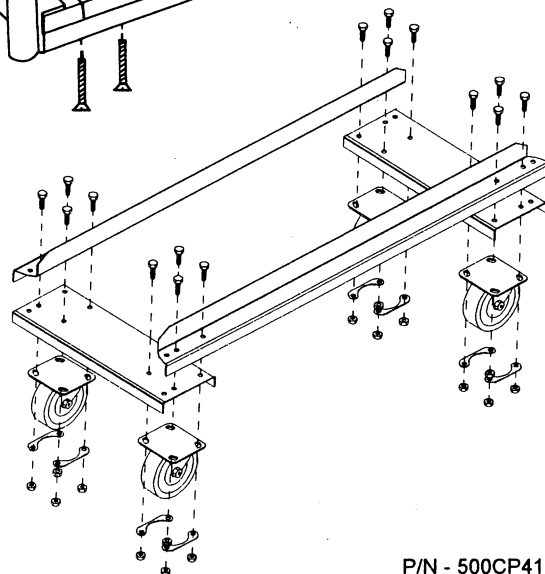
- 16 -  $\frac{1}{8}$ " x 2  $\frac{3}{4}$ " Carriage Bolt
- 16 -  $\frac{1}{8}$ " Locking Flange Nut



### DOLLY BASE:

#### REQUIRED:

- 16 -  $\frac{5}{16}$ " x  $\frac{3}{4}$ " HEX HEAD BOLTS
- 16 -  $\frac{5}{16}$ " LOCKING FLANGE NUTS



# PLATFORM TRUCK ASSEMBLY INSTRUCTIONS

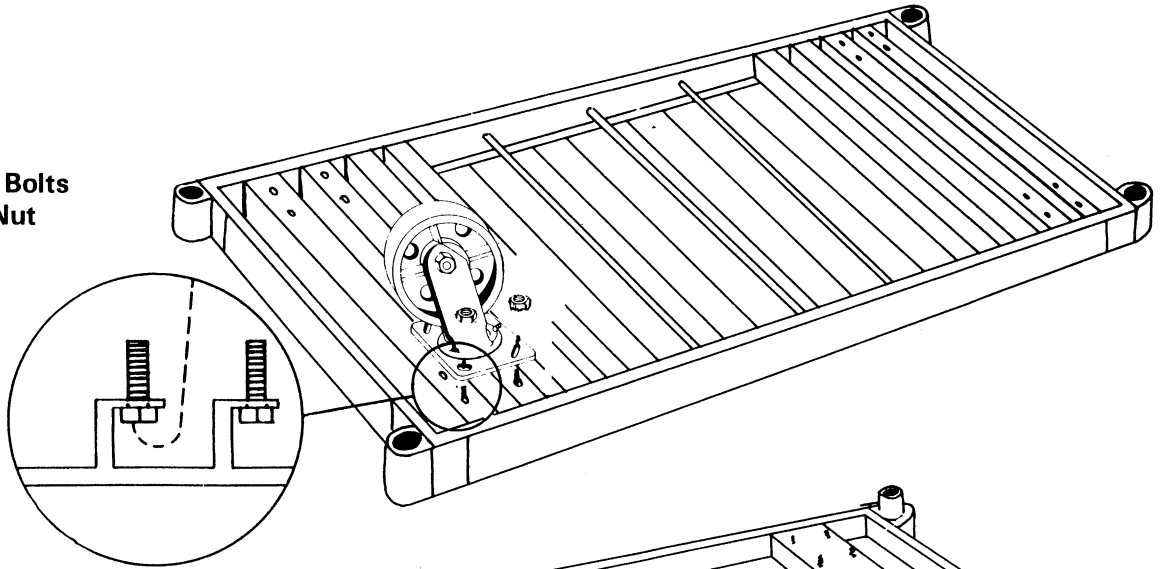
**NOTE:** The Hardware Package contains hardware for 3 different Platform Trucks. **THERE WILL BE EXCESS HARDWARE.** Swivel Casters are normally placed at Handle End.

## ALUMINUM DECK:

### REQUIRED:

16— $\frac{5}{16}$  x  $\frac{3}{4}$ " Hex Head Bolts

16— $\frac{5}{16}$  Locking Flange Nut



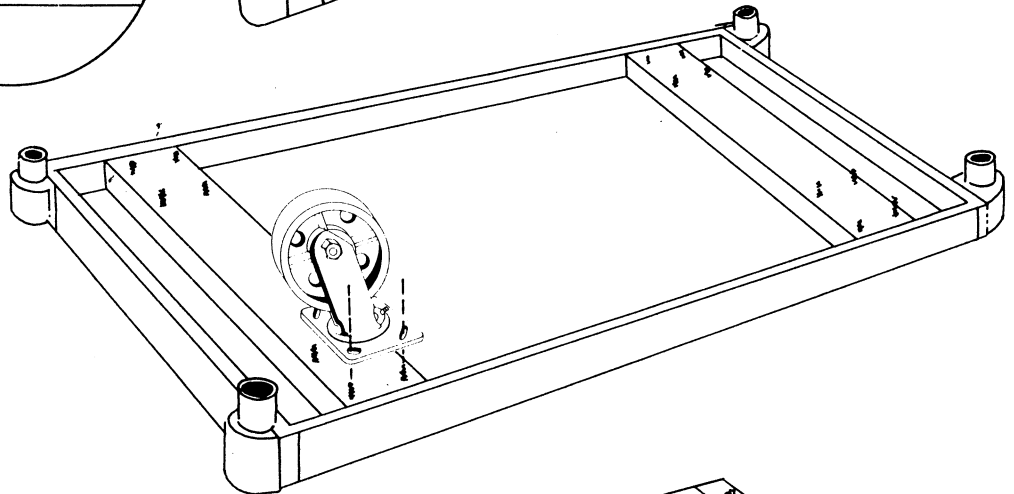
## STEEL DECK:

### REQUIRED:

16— $\frac{5}{16}$  Flat Washers

or

16— $\frac{5}{16}$  x  $\frac{3}{4}$ " Hex Head Bolt



## WOOD DECK:

### REQUIRED:

16— $\frac{5}{16}$  x  $2\frac{3}{4}$ " Carriage Bolt

16— $\frac{5}{16}$  Locking Flange Nut

