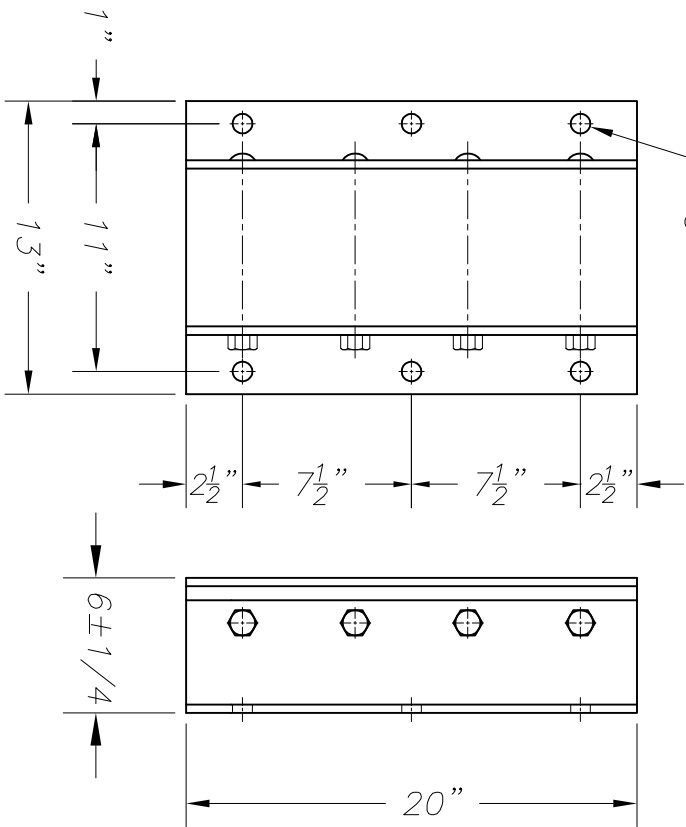


TOP VIEW

$\phi 8$ " TYP.



FRONT VIEW

RIGHT SIDE VIEW

ESTIMATED GROSS SHIPPING WEIGHT= 86 lbs.

NOTES:  
 UNIT SHOWN IS "ANGLES BOTH SIDES" (LVB620-11SF)  
 STANDARD "P1" CONFIGURATION (LVB620-11SF/P1)  
 IS ANGLE ONE SIDE, FLAT ON OTHER,  
 FOR WELDING TO DOCK FACE ON ONE SIDE  
 AND ANCHORING TO DOCK FACE ON THE OTHER.  
 "P2" CONFIGURATION (LVB620-11SF/P2)  
 IS FLAT BOTH SIDES FOR WELDING  
 TO DOCK FACE ON BOTH SIDES.  
 ALL TOLERANCES ARE  $\pm 1/8$ "  
 UNLESS OTHERWISE NOTED.

SPECIFICATIONS:

FURNISH AND INSTALL LAMINATED STEEL-FACED RUBBER DOCK BUMPER AS MANUFACTURED BY IRON GUARD SAFETY PRODUCTS. LAMINATED PADS SHALL BE RECYCLED RUBBERIZED FABRIC REINFORCED TRUCK TIRES CUT TO 5.25" X 10" PUNCHED AND ASSEMBLED THROUGH 3/4" RODS BETWEEN 3"x5"x1/4" THICK FORMED STEEL ANGLES UNDER 1500LBS OF PRESSURE. FINISH OF EXPOSED METAL SHALL BE PAINTED WITH WATER-BASED AND LEAD FREE PAINT OR HOT-DIPPED GALVANIZED (OPTIONAL).

THIS DRAWING AND THE DESIGN SHOWN ARE THE PROPERTY OF IRON GUARD SAFETY PRODUCTS. REPRODUCTION OR USE OF THIS DRAWING FOR ANY PURPOSE OTHER THAN THAT SPECIFIED SHALL BE VIEWED AS INFRINGEMENT AND BE SUBJECT TO LEGAL ACTION



SCALE: 1:96 DRAWN BY: W.R.

MODEL: LVB620-11SF DATE: JAN 2015

DATE: APPROVED BY: