

Instruction Manual	Manual de Instrucciones	Manuel d'instruction
Customer Service US: 1-800-645-2986	Servicio de atención al Cliente México: 01.800.681.6940	Service à la clientèle Canada: 888-645-2986

Inline Duct Fans

Models 292655, 292656, 292657, 292658, 292659



Important Instructions

- NOTE:** This product must be installed by a certified electrician in accordance with local codes.
- NOTE:** Please read the following instructions carefully prior to using this product.
- NOTE:** For general ventilating use only. Do not use to exhaust hazardous or explosive materials and vapors.
- NOTE:** Fans are designed to boost only dry (ambient heated or cooled airflow in duct conduits of forced air systems with temperatures between 50°F and 140°F.
- WARNING:** This device is made of sheet metal and must be grounded to a recognized grounding system.

1. GENERAL PRECAUTIONS

- 1.1 If product is dropped or damaged, immediately contact qualified service personnel (distributor or manufacturer) to verify product operation.
Please comply with the following when using device:
 - Do not touch device with moist or wet extremities.
 - Do not allow the product to be operated by children.
- 1.2 Connect unit to the main electricity supply or electrical outlet only if:
 - Electrical voltage and frequency corresponds to those shown on the rating plate.
 - Main electricity capacity supply is powered sufficiently to

operate unit at maximum power. If not, contact qualified personnel.

- 1.3 Always turn off or disconnect product when not in use.
- 1.4 Prior to cleaning or maintenance, switch off and disconnect unit from main electricity supply. Ensure fan blade has stopped completely prior to handling.
- 1.5 If malfunction or anomaly of any type occurs, ensure device is inoperable (turn off the switch and disconnect from main electricity supply) and immediately contact qualified service personnel.
- 1.6 If product requires removal, turn off the main network circuit breaker and disconnect device.
- 1.7 This fan is professionally manufactured and complies with current standards regarding electrical equipment.
- 1.8 Do not use unit at an ambient temperature greater than 149° Fahrenheit/65° Celsius
- 1.9 Do not allow product to be exposed to extreme weather (rain, sun, snow, etc.).
- 1.10 Do not place the device or parts in water or liquids.
- 1.11 During cleaning or routine maintenance, verify device condition.
- 1.12 To avoid the risk of fire, do not use the product near flammable substances or vapors such as alcohol, insecticides, gasoline, etc.
- 1.13 The air or fumes being extracted must be clean and free

Inline Duct Fan

of greasy particles, soot, chemical and corrosive agents, and flammable or explosive solutions.

- 1.14 The appliance should be connected to a tension free switch or by a lockable circuit breaker. If installed away from a switchboard and/or control point, a further auxiliary switch of the above-described type must be installed within proximity of the appliance.
- 1.15 To ensure optimum operation, do not block air intake or delivery vents.

2. INSTALLATION

- 2.1 While moving or installing, gloves or similar protection should be worn for safety and accident prevention.
- 2.2 Upon receipt, fan equipment should be visually inspected for any damage. Ensure impeller is obstruction free.

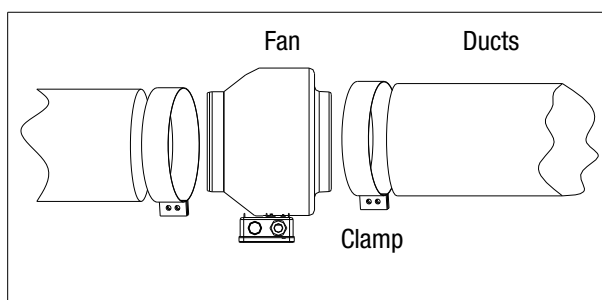
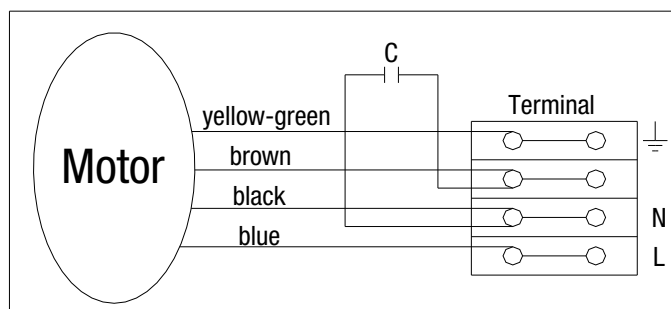


Fig. 1

- 2.3 Use the supplied mounting brackets to adjust unit to desired position. Fan may be mounted at any angle.
 - Secure appliance with clamps. Refer to bracket installation and attach directly to pipe (see Fig.1).
- 2.4 Verify motor rating plate to ensure that correct power supply (voltage, frequency and phase) is available. Incorrect power supply will lead to permanent fan motor damage.
- 2.5 Refer to the wiring diagram for wiring. Ensure that all ground connections are made. Run power supply to junction box and connect live, neutral, ground wires to the corresponding terminal.

Wiring Diagram



Model 292655, 292656

HARDWARE CONTENTS					
REF.	QTY.	DESCRIPTION	REF.	QTY.	DESCRIPTION
1	2	Left Bracket/..... Right Bracket	H1	4	ST4 .0*9.5.....

Model 292657, 292658, 292659

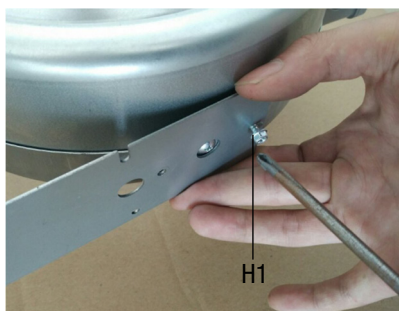
HARDWARE CONTENTS					
REF.	QTY.	DESCRIPTION	REF.	QTY.	DESCRIPTION
2	2	Left Bracket/..... Right Bracket	H1	4	M4 x 15mm Lg..... Phillips Pan Head Screw
			H2	4	Plain Washer (5mm).....
3	1	Support Bar.....	H3	4	M4 Hex Nut.....
			H4	4	ST4 .0*9.5.....

Bracket Installation

292655, 292656

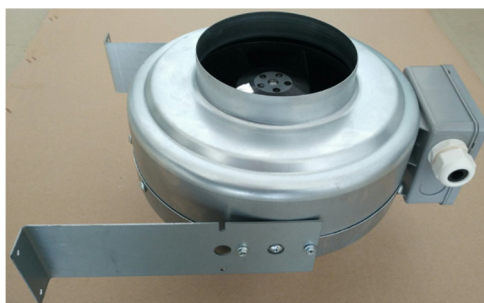
Configuration 1

Step 1



Attache Left/Right Brackets (1)
Using Screw H1

Step 2



Brackets are fastened to the unit.

Step 3



Fasten both brackets
to supporting surface

Inline Duct Fan

Configuration 2

Step 1



Attache Left/Right Brackets (1)
Using Screw H1

Step 2



Brackets are fastened to the unit.

Step 3

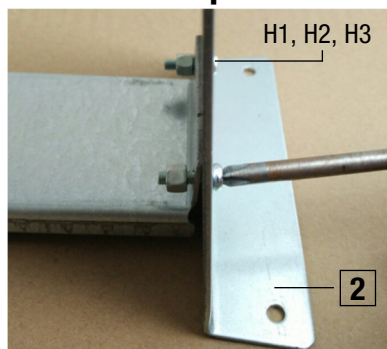


Fasten both brackets
to supporting surface

292657, 292658, 292659

Configuration 1

Step 1

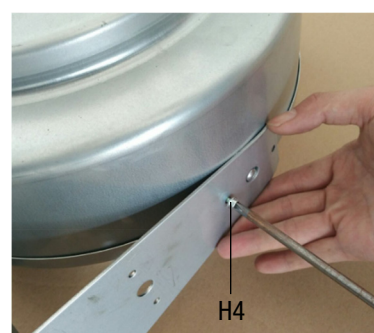


Attach support bar to left/right
bracket using H2, H3, H4

Step 2



Step 3



Attach the bracket using H4 screw

Step 4



Brackets are fastened to the unit

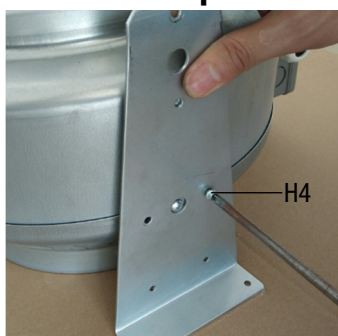
Step 5



Fasten the brackets to the supporting surface

Configuration 2

Step 1



Attach the bracket using H4 screw

Step 2



Brackets are fastened to the unit.

Step 3



Fasten both brackets
to supporting surface

4. OPERATION

- 4.1 Before power is supplied to unit, verify wiring accuracy as per fan connection diagram.
- 4.2 At initial start-up, verify that impeller rotation and airflow direction is correct.
- 4.3 Ensure that motor amperage draw does not exceed nameplate rating.

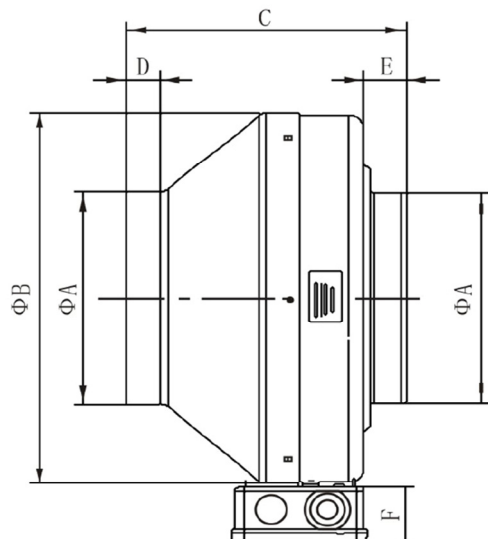
5. MAINTENANCE & CLEANLINESS

- 5.1 Motor and fan wheel should be inspected periodically; approximately every six months if continuously operated.

- 5.2 Please inspect all fastenings and rotating equipment for stability.

- 5.3 Appliance maintenance should only be completed by qualified personnel.

- 5.4 Prior to maintenance, switch off the main power switch. During routine maintenance, verify condition of all appliance parts.



DIMENSIONAL DATA

Inline Fan	Size	Dimension (mm)					
	(inch)	A	B	C	D	E	F
Φ100	4	100	237	204	25	25	42
Φ150	6	150	278	195	25	25	42
Φ200	8	200	333	210	25	25	42
Φ250	10	250	333	210	28.6	28.5	42
Φ300	12	300	402	276	25	30	42

SPECIFICATIONS

Product Number	Outlet/ Inlet port diameter (inch/mm)	Voltage	Frequency	Airflow	Speed	Power	Current	Noise	Insulation Class
		(VAC)	(Hz)	(CFM)	(RPM)	(W)	(A)	(dB)	
292655	4"/100	120	60	121	3150	22	0.19	60	F
292656	6"/150	120	60	265	3000	55	0.44	66	F
292657	8"/200	120	60	565	3100	127	1.1	75	F
292658	10"/250	120	60	588	3000	130	1.1	73	F
292659	12"/300	120	60	824	2750	190	1.52	72	F