

Explosion Proof Fluorescent Lights for Paint Booths, Oil Rigs, Boats -2 foot - 2 lamp -Multi-voltage

Part #: EPL-24-2L

**Made in the USA**

The Larson Electronics EPL-24-2L Explosion Proof Fluorescent Light Fixture is U.S./Canada U.L. approved Class 1 Division 1, Class 2 Division 1 and for hazardous locations where flammable chemical/petrochemical vapors exist or have the potential to exist.

The EPL-24-2L fixture is a 2 foot long, 2 lamp, UL listed Class 1 Division 1 and Class 2 Division 1 & 2 explosion proof fluorescent light and an ideal choice for use in applications where space is at a premium. This T6 temperature rated fixture comes standard with F24-T5/HO lamps and is available with a variety of lamp options which are listed below. The lamps are protected by heat and impact resistant Pyrex tubes and the fixture is constructed of copper free aluminum alloy. The lamp reflectors are corrosion resistant heavy gauge aluminum and coated with a high gloss reflective finish. This fixture is multi-voltage capable and is U.L. approved for use in paint spray booths.

The EPL-24-2L provides operators in hazardous locations with a compact, reliable and affordable lighting solution that provides the best explosion proof protection available without sacrificing light quality or fixture durability.

[Click Photo to Enlarge](#)[Click Photo to Enlarge](#)[Click Photo to Enlarge](#)

NOTE ON LAMPS: We offer a choice of bulbs with all of our explosion proof fluorescent fixtures. We standardize on the T5HO bulbs mostly for their longevity and high output. However, many of our customers, including Naval bases, shipyards, oil rigs and petrochemical processing plants operate in very cold conditions and T12HO bulbs operate well in those environments. The T12VHO, 110 watt Very High Output lamps make this fixture an ideal replacement for 400 watt metal halide surface mount fixtures in hazardous location areas requiring Class 1 Division 1 rated lights. *However, the 110 watt T12VHO lamp configuration is not appropriate for paint spray booth applications.

Additional mounting options: Unless otherwise specified, our standard, most popular configuration is the bracket end mounting shown in the photos above. We also offer a pendant mount for those needing to suspend the fixture away from the ceiling surface (i.e. suspend from pipe or conduit).

Standard Bracket Mounts: Each bracket is cinched to the bracket mounting peg on each side of the light. The angle of the bracket is set by tightening two cap screws on either side of the bracket. The cap screws act as a set screw. The bracket itself is mounted via a single bolt hole at the top of the bracket. There are two brackets, one on each end of the light. Once the brackets are mounted to a surface (ceiling, floor or wall), the light fixture can be removed from the brackets by loosening the cap screws that hold the bracket to the mounting peg. The first picture shown above illustrates the ballast side bracket and also shows the access caps for changing the bulbs. The second picture shows the bracket at the opposite end of the fluorescent light.

Made in USA Quality

1. Each unit dialectically tested.
2. Fixture arrives assembled and lamped to reduce installation time and cost. Adjustable mounting brackets enable the operator to choose any mounting angle for the fixture, where other models may only offer one or three choices.
3. Fixture constructed of extruded corrosion resistant copper free aluminum alloy.
4. Over-sized, finned ballast housing for 800 mA fixtures provides more heat dissipation and extends ballast life. Ballast housing easily accessible and externally mounted. Top and bottom covers secured with nuts and bolts, instead of threaded through holes, which can be damaged with dirt.
5. Heavy gauge extruded aluminum reflectors with high gloss reflective finish. Resists dents and corrosion.
6. A wrench is used to unscrew the end caps for relamping the fixture, while other models require the "tap and knock off" method to loosen the end cap.
7. Explosion proof, impact and heat resistant Pyrex tubes provide lamp protection.

Lamp Options

F24-T5HO – 2000 lumens per bulb (4000 lumens total), 20,000 hours life, 5000 Kelvin color, CRI 85 RHA-UNV-254-LT5 Ballast is THD<10% and HPF .98

F24-T12/HO – 1650 lumens per bulb (3300 lumens) 9,000 hours life, 4100 Kelvin color

F17-T8 – 1325 lumens per bulb (2650 lumens total), 24,000 hours life, 4100 Kelvin color

F24-T12-D-HO – 1650 lumens per bulb (3300 lumens), 9,000 hours life, 5100 Kelvin color (76 CRI - Color Rendition) - This specialty lamp is designed to mimic daylight conditions. For paint spray booth operators requiring a brighter color light than a traditional "cool white", this bulb can be useful.

Note: There is some confusion on T-12 bulbs. There are 2 types of T-12 bulbs. The older T-12 bulbs ran on magnetic ballasts. Those ballasts have vanished and the T-12 bulbs that work with those ballasts are vanishing as well. All of our explosion proof fluorescent fixtures use electronic ballasts and the F48-T12/HO bulb is widely available and low cost to replace. We use Philips bulbs and they plan to continue the T-12 series indefinitely, as does GE. In fact, GE is now selling an electronic ballast replacement for T12 based fixtures that formerly operated with their magnetic ballasts.

[Click here to see the LED version of this fixture](#)

Specifications / Additional Information**EPL-24-2L Explosion Proof****UL Listing:** United States - Canada**Dimensions:** W-11.25" L-27.5" H-8.5 "**Weight:** 55 Lbs**Total Watts:** 48 watts***Voltage:** Multi- 120V-60hz 220V-50hz 240V-60hz 277V-60hz**Total Lumens:** **STD-T5-HO Bulbs** 4000**Lamp Life Expectancy:** **STD-T5-HO Bulbs** 20,000 Hours**Efficiency:** **STD-T5-HO Bulbs** 83 Lumens per Watt**Ambient Operating Temp Range:**-30 C to 70 C**Beam Angle:** N/A**Color Temp:** 4100K-**Mounting:** Bracket Standard - Pendant Optional**Wiring Hub:** 1/2 inch threaded**U.L Approval:** [U.S Certificate](#) [Canada Certificate](#)**Operating Temp Rating:** T6 Rated**Minimum Operating Temp:** -30 C**Maximum Case Temp:** 90 C

*Wattage totals are lamps only and may vary with different lamps.

*5 year warranty replacement on this light (or bulbs for light fixtures with removable bulbs). After 30 days, the customer ships the failed light and/or bulb to Larson Electronics at their expense. If the failure is a manufacturer defect, we will ship a new replacement to the customer. If failure occurs within 30 days of receipt, Larson Electronics will provide a return label via email to the customer. When the failed light is returned, we will ship a new replacement.

Scroll Down to Purchase- Please note: 2 day lead time on this light.

Part #: [EPL-24-2L \(1797\)](#)

U.L. Ratings

Class 1 Division 1, Groups C and D

Class 1 Division 2, Group A,B,C,D

Class II Division 1- 2, Groups E,F,G

UL 844, 924

UL 1598 Marine Type

UL 595 Outdoor Marine Type (Saltwater)

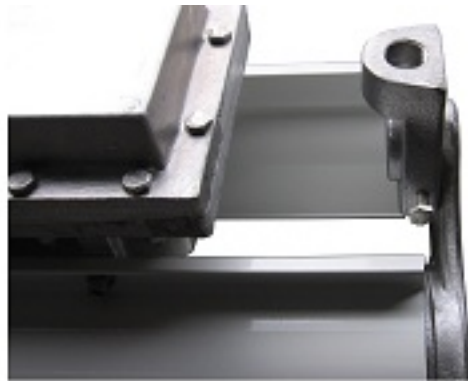
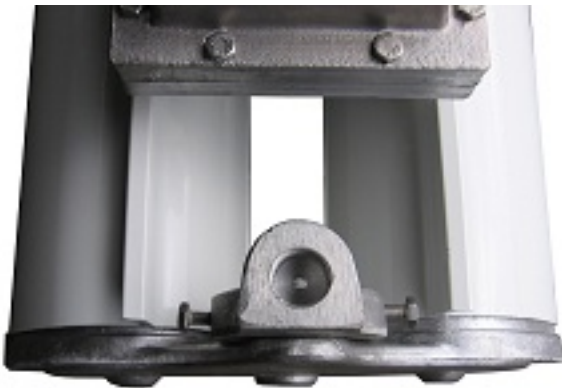
UL listed for Paint Spray Booths*

California Title 24 Compliant

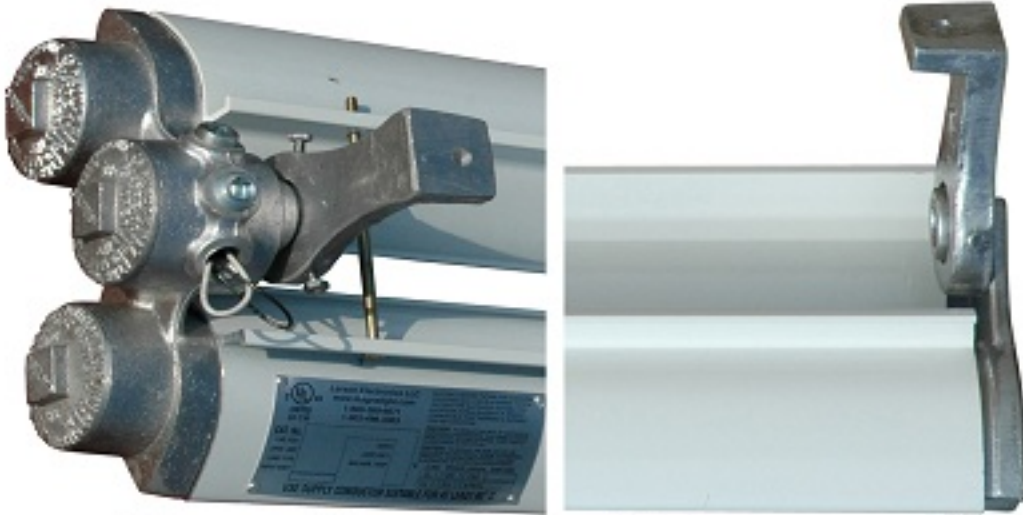
Special Orders- Requirements

Contact us for special requirements

Phone: 1-214-616-6180**Toll Free:** 1-800-369-6671**Fax:** 1-903-498-3364**E-mail:** sales@larsonelectronics.com



Pendant Mount



Surface Mount



Links (Click on the below items to view):

- [SpecSheet French](#)
- [SpecSheet Arabic](#)
- [Dimensional Drawing](#)
- [Manual](#)
- [IES](#)
- [STEP](#)

- EASM
- Hi Res Image 1 - Front Image of the EPL-24-2L with T5HO Bulbs
- Hi Res Image 2 - Surface Mount Brackets
- Hi Res Image 3 - Surface Mount Brackets
- Hi Res Image 4 - Close up Image of the EPL-24-2L
- Hi Res Image 5 - Pendant Mount Brackets
- Hi Res Image 6 - Pendant Mount Brackets
- Hi Res Image 7 - Front Image of the EPL-24-2L with T8 Bulbs