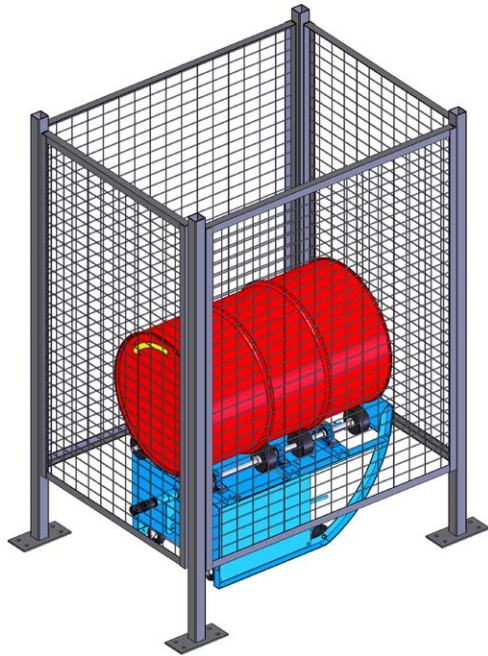


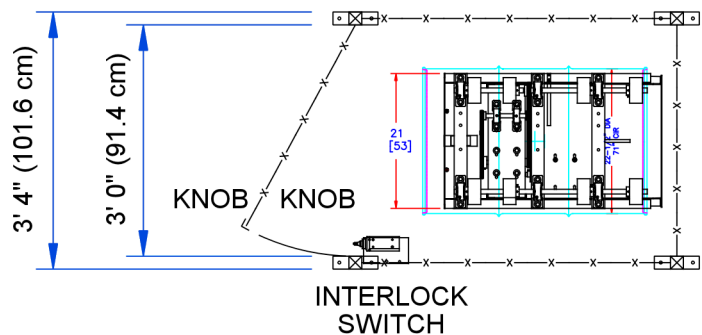
**Guard Enclosure Kits with Safety Interlock**

**Enclosure and Interlock to Comply with OSHA Requirements**  
(Drum Roller Sold Separately)

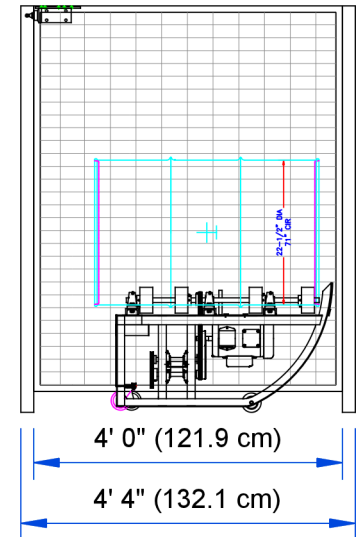
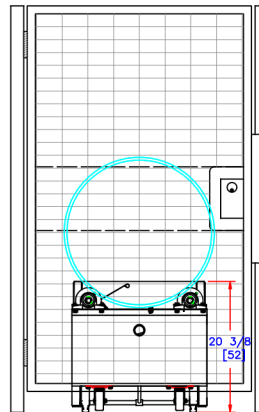
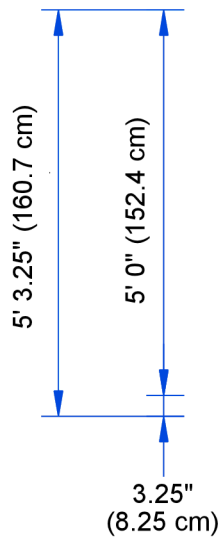


**Outside post-to-post Dimensions**  
L52" x W40" x H63.25" (132 x 102 x 161 cm)

**3' (91.4 cm) WIDE DOOR OPENING**  
**WITH KNOB BOTH SIDES**



**DOOR PANEL**



Enclosures for Morse Portable Drum Rollers have a safety interlock to automatically shut off the drum roller when the gate is opened. Open the enclosure gate, place your drum onto the drum roller, then close the gate to allow operation. Connections are included for single-phase AC and for air powered models only. Customer to provide controls and connections for 3-phase AC and for explosion-proof AC models.

Install all Morse Drum Rotators in accordance with OSHA requirements for enclosure and safety interlock, etc. Drum roller automatically turns off when enclosure door is opened.

For OSHA compliance, see OSHA subpart O.1910.212(a)(4) "Barrels, containers, and drums. Revolving drums, barrels, and containers shall be guarded by an enclosure which is interlocked with the drive mechanism, so that the barrel, drum, or container cannot revolve unless the guard enclosure is in place."

Power connections and motor controls must comply with applicable codes.

Guard Enclosure Kit	Guard Enclosure Kit with Safety Interlock	Gate Switch	Domestic Ship Weight	Domestic Ship Dimensions
GEK-201-1	Fits Portable Drum Roller with 1-phase electric motor	AC	340 Lb. (154 kg)	L101" W31" H66" (257 x 79 x 168 cm)
GEK-201-3	Fits Portable Drum Roller with 3-phase electric motor	AC	340 Lb. (154 kg)	L101" W31" H66" (257 x 79 x 168 cm)
GEK-201-E1	Fits Portable Drum Roller with Explosion-proof 1-phase electric motor	AC	340 Lb. (154 kg)	L101" W31" H66" (257 x 79 x 168 cm)
GEK-201-E3	Fits Portable Drum Roller with Explosion-proof 3-phase electric motor	AC	340 Lb. (154 kg)	L101" W31" H66" (257 x 79 x 168 cm)
GEK-201-A	Fits Portable Drum Roller with Air motor	Air	340 Lb. (154 kg)	L101" W31" H66" (257 x 79 x 168 cm)

\* Explosion Proof motors are rated for Class I Group D, and Class II Groups F and G