



NUMERICAL INDEX

10-D	31	66092.....	13
10-K	30	66092B.....	15
6006-U	7	66099.....	13
6040-P.....	9	66099-AC.....	27
6049-P.....	9	66099-AQ	29
6050-U.....	6	66099B.....	15
6059-U	7	66099-SG	28
6069-U	7	67020.....	30
6077.....	32	67030.....	31
6088.....	42	67100.....	38
6310.....	18	67110.....	32
6320.....	19	67114.....	32
6330-P.....	19	67132.....	33
6340-P.....	19	67135.....	33
6341.....	20	67136.....	33
6342.....	21	67200.....	38
6351.....	21	67202.....	39
6352.....	21	67203.....	39
6361.....	22	67231.....	37
6362.....	22	67235.....	36
6810.....	25	67236.....	37
6900.....	41	67237.....	37
6900-B	41	68936.....	34
6901.....	41	68937.....	34
6902.....	40	8711-P.....	44
6940.....	43	8720-P.....	44
6950.....	43	8805-P.....	45
66000.....	12	8820-P.....	44
66000B.....	14	8821-P.....	45
66002.....	13	8902-P.....	44
66002B.....	15	8921-P.....	45
66010.....	10	8950-P.....	45
66011.....	11		
66011-P.....	17		
66020.....	11		
66029-P.....	17		
66022.....	11		
66022-P.....	17		
66011-AC.....	26		
66011-AQ	29		
66011-SG.....	28		
66060-P.....	16		

CHAIR OPTIONS

640.....	23
641.....	23
650.....	23

6





Clinton Industries has been among the leading suppliers of quality Phlebotomy Equipment for more than two decades.

Designed and built tough in the USA by Clinton Industries, Clinton blood drawing chairs, blood drawing stations, phlebotomy carts and accessories provide comfort and convenience for both the patient and attendant. Plus, only Clinton equipment has the exceptional quality and durability that has made us the choice of many phlebotomists and clinicians across the country and around the world.

Our offering of blood drawing equipment is one of the broadest in the industry and includes features and price points for every budget. And, Clinton backs up all its phlebotomy products with a five-year limited warranty—one of the best in the industry.

We invite you to examine our products and select your phlebotomy equipment from the one source that is committed to your needs.

Examine real quality — choose Clinton Industries.

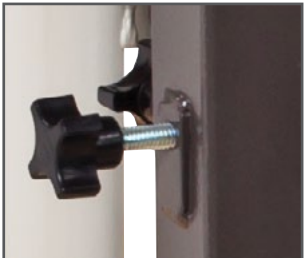


SC SERIES,
BLOOD DRAWING CHAIRS

Practical and affordable, the Clinton SC Series, Blood Drawing Chairs feature casual comfort, a minimal footprint and Clinton quality at some of the best price points in the industry.

Clinton SC Series Chairs feature:

- Contemporary styling
- Gray powder-coated frame finish
- Adjustable height and depth flip arm
- Flip arm positions in place when in use, then flips out of the way for easy exit
- Optional padded arms available
- 2" contoured, padded seat and backrest or one-piece, E-Z-clean plastic seat
- Height adjustable armrest
- Non-marking, nylon glides
- Chair-mounted options available (see page 21)
- 300 lbs. load capacity under normal use (136 kg)



Armrests are adjusted by two star knobs



Adjustable depth flip-arm



6050-U

SC Series, Padded, Blood Drawing Chair with Padded Arms

- Contoured padded seat and backrest
- Straight padded flip arm and armrests
- See page 23 for chair-mounted options
- See inside back cover for alternate arm choices

6050-U

seat	dimensions		seat height
	17 ¹ / ₂ " x 18"		18"
	44 cm x 46 cm		46 cm
overall	width	depth	height
	28"	25"	32"
	71 cm	64 cm	81 cm
arms	arms height range		
	6"		15 cm

IMPORTANT NOTE: Clinton Blood Drawing Chairs are not engineered to restrain a fainting or falling occupant. The chair's occupant should NEVER be left unattended.

SC Series, Padded, Blood Drawing Chair with Padded Flip Arm and Drawer

- Contoured padded seat and backrest
- Padded flip arm and armrest
- ClintonClean™ drawer top
- One-piece, all-plastic drawer
- See page 21 for chair-mounted options
- See inside back cover for alternate arm choices

6059-U

seat	dimensions		seat height
	17 ¹ / ₂ " x 18"		18"
	44 cm x 46 cm		46 cm
overall	width	depth	height
	36"	25"	32"
	91 cm	64 cm	81 cm
arms	arms height range		
	6"		15 cm



6059-U

SC Series, Extra-Wide, Padded, Blood Drawing Chair with Padded Flip Arms

- Contoured, padded seat and 2" padded backrest
- Dual, padded flip arms and armrests
- See page 21 for chair-mounted options
- See inside back cover for alternate arm choices

6006-U

seat	dimensions		seat height
	30" x 18"		20"
	76 cm x 46 cm		51 cm
overall	width	depth	height
	43"	25"	34 ¹ / ₂ "
	109 cm	64 cm	88 cm
arms	arms height range		
	6"		15 cm



6006-U

SC Series, Extra-Wide, Padded, Blood Drawir Chair with Padded Flip Arm and Drawer

- Contoured, padded seat and 2" padded back
- Padded flip arm and armrest
- ClintonClean™ drawer top
- One-piece, all-plastic drawer
- See page 21 for chair-mounted options
- See inside back cover for alternate arm choice

6069-U

seat	dimensions		seat height
	30" x 18"		20"
	76 cm x 46 cm		51 cm
overall	width	depth	height
	51 ¹ / ₂ "	26 ¹ / ₂ "	34 ¹ / ₂ "
	131 cm	67 cm	88 cm
arms	arms height range		
	6"		15.24 cm



6069-U

All blood drawing products are non-returnable unless they are unused in unopened, original packaging.



6059-U-665

- SC Series, E-Z-Clean, Blood Drawing Chair with ClintonClean™ Arms**
- One-piece, E-Z-Clean, black, plastic seat
 - ClintonClean™ flip arm and armrests
 - See page 21 for chair-mounted options
 - See inside back cover for alternate arm choices

6040-P

seat	dimensions	seat height	
	18" x 17"	20"	
	46 cm x 43 cm	51 cm	
overall	width	depth	height
	28"	25"	35"
	71 cm	64 cm	89 cm
arms	arms height range		
	6"		
	15 cm		



6040-P

- SC Series, E-Z-Clean, Blood Drawing Chair with ClintonClean™ Flip Arm and Drawer**
- One-piece, E-Z-Clean, black, plastic seat
 - ClintonClean™ flip arm and armrest
 - ClintonClean™ drawer top
 - One-piece, all-plastic drawer
 - See page 21 for chair-mounted options
 - See inside back cover for alternate arm choices

6049-P

seat	dimensions	seat height	
	18" x 17"	21"	
	46 cm x 43 cm	53 cm	
overall	width	depth	height
	39"	25"	35"
	99 cm	64 cm	89 cm
arms	arms height range		
	6"		
	15 cm		



6049-P

All blood drawing products are non-returnable unless they are unused in unopened, original packaging.

LAB X SERIES,
BLOOD DRAWING CHAIRS

Clinton's Lab X Series, Blood Drawing Chairs put patient comfort first. A thick, padded, contoured seat and arched backrest are supported by a stable, durable, steel, powder-coated frame. Height-adjustable arms make operation easy for clinician and comfortable for patient.

Lab X Series Chairs feature:

- 1 1/4" square, heavy duty, all-welded, tubular steel, frame (3 cm)
- Adjustable height and depth flip arm
- Flip arm positions in place when in use, then flips out of the way for easy exit
- Optional ClintonClean™ Arms available
- Comfortable, 2" padding throughout (5 cm)
- Neutral Gray, powder-coated frame
- Height adjustable armrest
- Easy-clean, durable vinyl in a selection of colors
- Chair-mounted options available (see page 21)
- 400 lbs. load capacity under normal use (181.4 kg)



Armrests are adjusted by two star knobs



Adjustable depth flip-arm



66010

Lab X Series, Blood Drawing Chair with Padded Arms

- Contoured padded seat and padded, arched backrest
- Padded flip arm and armrests
- See page 21 for chair-mounted options
- See inside back cover for alternate arm choices

66010	seat	dimensions		seat height
		17 1/2" x 18"		19"
		44 cm x 46 cm		48 cm
overall		width	depth	height
		31"	26"	36"
		79 cm	66 cm	91 cm
arms	arms height range			
			6"	15 cm

IMPORTANT NOTE: Clinton Blood Drawing Chairs are not engineered to restrain a fainting or falling occupant. The chair's occupant should NEVER be left unattended.

Lab X Series, Blood Drawing Chair with Padded Flip Arm and Drawer

- Contoured padded seat and padded, arched backrest
- Padded flip arm and armrest
- ClintonClean™ drawer top
- One-piece, all-plastic drawer
- See page 21 for chair-mounted options
- See inside back cover for alternate arm choices

66020	seat	dimensions		seat height
		17 1/2" x 18"		20"
		44.45 cm x 45.72 cm		50.8 cm
overall		width	depth	height
		38"	27"	36"
		97 cm	69 cm	91 cm
arms	arms height range			
			6"	15 cm

Lab X Series, Extra-Tall, Blood Drawing Chair with Padded Arms

- Contoured padded seat and padded, arched backrest
- Padded flip arm and armrests
- Extra height reduces bending for phlebotomist
- See page 21 for chair-mounted options
- See inside back cover for alternate arm choices

66011	seat	dimensions		seat height
		17 1/2" x 18"		26"
		44 cm x 46 cm		66 cm
overall		width	depth	height
		31"	27"	42 1/2"
		79 cm	69 cm	108 cm
arms	arms height range			
			6"	15 cm

Lab X Series, Extra-Tall, Blood Drawing Chair with Padded Flip Arm and Drawer

- Contoured padded seat and padded, arched backrest
- Padded flip arm and armrest
- ClintonClean™ drawer top
- One-piece, all-plastic drawer
- Extra height reduces bending for phlebotomist
- See page 21 for chair-mounted options
- See inside back cover for alternate arm choices

66022	seat	dimensions		seat height
		17 1/2" x 18"		26"
		44 cm x 46 cm		66 cm
overall		width	depth	height
		38"	27"	42 1/2"
		97 cm	69 cm	108 cm
arms	arms height range			
			6"	15 cm



66020



66011



66022

All blood drawing products are non-returnable unless they are unused in unopened, original packaging.

LAB X SERIES, EXTRA-WIDE,
BLOOD DRAWING CHAIRS

Clinton's Lab X Series, Extra-Wide, Blood Drawing Chairs feature thick padded surfaces supported by a durable steel frame. The additional width can accommodate a larger patient, or a parent and a child.

Lab X Series, Extra-Wide Chairs feature:

- A full 35" wide seat to accommodate a larger patient or parent and child (89 cm)
- 1 1/4" square, heavy duty, all-welded, tubular steel frame (3 cm)
- Adjustable height and depth flip arm(s)
- Flip arm(s) positions in place when in use, then flips out of the way for easy exit
- Optional ClintonClean™ arms available
- Comfortable 2" padding throughout (5 cm)
- Neutral Gray, powder-coated frame
- Easy-clean, durable vinyl in a selection of colors
- Chair-mounted options available (see page 21)
- 400 lbs. combined load capacity under normal use (181.4 kg)



Armrests are adjusted by two star knobs



Adjustable depth flip-arm



66000

Lab X Series, Extra-Wide, Blood Drawing Chair with Padded Arms

- Padded seat and backrest
- Dual, padded flip arms and armrests
- See page 21 for chair-mounted options
- See inside back cover for alternate arm choices

66000			
seat	dimensions	seat height	
	35" x 18"	20"	
	89 cm x 46 cm	51 cm	
overall	width	depth	height
	46"	26"	36"
	117 cm	66 cm	91 cm
arms	arms height range		
	6"		15 cm

IMPORTANT NOTE: Clinton Blood Chairs are not engineered to restrain a fainting or falling occupant. The chair's occupant should NEVER be left unattended.

Lab X Series, Extra-Wide, Blood Drawing Chair with Padded Flip Arm and Drawer

- Padded seat and backrest
- Padded flip arm and armrest
- ClintonClean™ drawer top
- One-piece, all-plastic drawer
- See page 21 for chair-mounted options
- See inside back cover for alternate arm choices

66002			
seat	dimensions	seat height	
	35" x 18"	20"	
	89 cm x 46 cm	51 cm	
overall	width	depth	height
	53"	26"	36"
	135 cm	66 cm	91 cm
arms	arms height range		
	6"		15 cm



66002

Lab X Series, Extra-Wide & Extra-Tall, Blood Drawing Chair with Padded Arms

- Padded seat and backrest
- Dual, padded flip arms and armrests
- Extra height reduces bending for phlebotomist
- See page 21 for chair-mounted options
- See inside back cover for alternate arm choices

66099			
seat	dimensions	seat height	
	35" x 18"	26"	
	89 cm x 45.72 cm	66 cm	
overall	width	depth	height
	46"	26"	42 1/2"
	117 cm	66 cm	108 cm
arms	arms height range		
	6"		15 cm



66099

Lab X Series, Extra-Wide & Extra-Tall, Blood Drawing Chair with Padded Flip Arm and Drawer

- Padded seat and backrest
- Padded flip arm and armrest
- ClintonClean™ drawer top
- One-piece, all-plastic drawer
- Extra height reduces bending for phlebotomist
- See page 21 for chair-mounted options
- See inside back cover for alternate arm choices

66092			
seat	dimensions	seat height	
	35" x 18"	26"	
	89 cm x 45.72 cm	66 cm	
overall	width	depth	height
	53"	26"	42 1/2"
	135 cm	66 cm	108 cm
arms	arms height range		
	6"		15 cm



66092

All blood drawing products are non-returnable unless they are unused in unopened, original packaging.

LAB X SERIES, BARIATRIC, BLOOD DRAWING CHAIRS

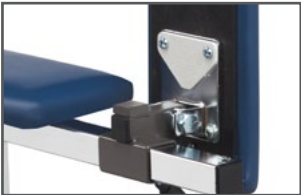
Built tough enough to support 700 lbs. under normal use, the Clinton Lab X Series, Bariatric, Blood Drawing Chairs are in a class by themselves. Sturdy, steel construction is combined with thick foam padding to provide an extra measure of comfort and security for larger patients.

Lab X Bariatric Series Chairs feature:

- A full 35" wide seat (89 cm)
- 1 1/4" square, heavy duty, all-welded, tubular steel frame (3 cm)
- Extra steel center support
- Adjustable height and depth flip arm(s)
- Flip arm(s) positions in place when in use, then flips out of the way for easy exit
- Optional ClintonClean™ arms available
- Comfortable 2" padding throughout (5 cm)
- Neutral Gray powder-coated frame
- Adjustable foot levelers
- Easy-clean, durable vinyl in a selection of colors
- Chair-mounted options available (see page 23)
- 700 lbs. combined load capacity under normal use (181.4 kg)



Armrests are adjusted by two star knobs



Adjustable depth flip-arm



66000B

Lab X Series, Bariatric, Blood Drawing Chair with Padded Arms

- Padded seat and backrest
- Dual, padded flip arms and armrests
- See page 23 for chair-mounted options
- See inside back cover for alternate arm choices

66000B

seat	dimensions		seat height
	35" x 21"		20"
	89 cm x 53 cm		51 cm
overall	width	depth	height
	46"	29"	36"
	117 cm	74 cm	91 cm
arms	arms height range		
	6"		15 cm

IMPORTANT NOTE: Clinton Blood Chairs are not engineered to restrain a fainting or falling occupant. The chair's occupant should NEVER be left unattended.

Lab X Series, Bariatric, Blood Drawing Chair with Padded Flip Arm and Drawer

- Padded seat and backrest
- Padded flip arm and armrest
- ClintonClean™ drawer top
- One-piece, all-plastic drawer
- See page 23 for chair-mounted options
- See inside back cover for alternate arm choice

66002B

seat	dimensions		seat height
	35" x 21"		20"
	89 cm x 53 cm		51 cm
overall	width	depth	height
	53"	29"	36"
	135 cm	74 cm	91 cm
arms	arms height range		
	6"		15 cm

Lab X Series, Bariatric, Extra-Tall, Blood Drawing Chair with Padded Arms

- Padded seat and backrest
- Dual, padded flip arms and armrests
- Extra height reduces bending for phlebotomist
- See page 23 for chair-mounted options
- See inside back cover for alternate arm choices

66099B

seat	dimensions		seat height
	35" x 21"		26"
	89 cm x 53 cm		51 cm
overall	width	depth	height
	46"	29"	42 1/2"
	117 cm	74 cm	108 cm
arms	arms height range		
	6"		15 cm

Lab X Series, Bariatric, Extra-Tall, Blood D Chair with Padded Flip Arm and Drawer

- Padded seat and backrest
- Padded flip arm and armrest
- ClintonClean™ drawer top
- One-piece, all-plastic drawer
- Extra height reduces bending for phleboto
- See page 23 for chair-mounted options
- See inside back cover for alternate arm ch

66092B

seat	dimensions		seat height
	35" x 21"		26"
	89 cm x 53 cm		66 cm
overall	width	depth	height
	53"	29"	42 1/2"
	135 cm	74 cm	108 cm
arms	arms height range		
	6"		15 cm



66002B



66099B



66092B

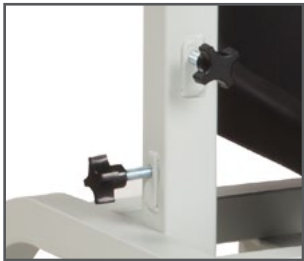
All blood drawing products are non-returnable unless they are unused in unopened, original packaging.

STANDARD LAB SERIES,
BLOOD DRAWING CHAIRS

The contemporary look of a Clinton E-Z-Clean seat is combined with our classic, ultra-durable, steel powder-coated frame to provide an even more affordable option when selecting blood drawing chairs.

Standard Lab Series Chairs feature:

- 1 1/4" square, heavy duty, all-welded, tubular steel, frame (3 cm)
- Adjustable height and depth flip arm
- Flip arm positions in place when in use, then flips out of the way for easy exit
- Optional padded arms available
- E-Z-Clean, one-piece, black, plastic seat
- Neutral Gray powder-coated frame
- Height adjustable armrest
- Chair-mounted options available (see page 23)
- 300 lbs. load capacity under normal use (136 kg)



Armrests are adjusted by two star knobs



Adjustable depth flip-arm

Standard Lab Series, Blood Drawing Chair with ClintonClean™ Arms

- E-Z-Clean, one-piece, black, plastic seat
- ClintonClean™ flip arm and armrests
- See page 23 for chair-mounted options
- See inside back cover for arm alternate choices

66060-P

seat	dimensions	seat height
	18" x 17" 46 cm x 43 cm	20" 51 cm
overall	width	depth
	31" 79	28" 71 cm
arms	arms height range	
	6" 15 cm	

IMPORTANT NOTE: Clinton Blood Drawing Chairs are not engineered to restrain a fainting or falling occupant. The chair's occupant should NEVER be left unattended.



66060-P

Standard Lab Series, Blood Drawing Chair with ClintonClean™ Flip Arm and Drawer

- E-Z-Clean, one-piece, black, plastic seat
- ClintonClean™ flip arm and armrest
- ClintonClean™ drawer top
- One-piece, all-plastic drawer
- See page 23 for chair-mounted options
- See inside back cover for alternate arm choices

66029-P

seat	dimensions	seat height
	18" x 17" 46 cm x 43 cm	20" 51 cm
overall	width	depth
	40" 102 cm	28" 71 cm
arms	arms height range	
	6" 15 cm	



66029-P

Standard Lab Series, Extra-Tall, Blood Drawing Chair with ClintonClean™ Arms

- E-Z-Clean, one-piece, black, plastic seat
- ClintonClean™ flip arm and armrests
- Extra height reduces bending for phlebotomist
- See page 23 for chair-mounted options
- See inside back cover for arm alternate choices

66011-P

seat	dimensions	seat height
	18" x 17" 46 cm x 43 cm	26" 66 cm
overall	width	depth
	31" 79 cm	28" 71 cm
arms	arms height range	
	6" 15 cm	



66011-P

Standard Lab Series, Extra-Tall, Blood Drawing Chair with ClintonClean™ Flip Arm and Drawer

- E-Z-Clean, one-piece, black, plastic seat
- ClintonClean™ flip arm
- ClintonClean™ drawer top
- One-piece, all-plastic drawer
- Extra height reduces bending for phlebotomist
- See page 23 for chair-mounted options
- See inside back cover for alternate arm choices

66022-P

seat	dimensions	seat height
	18" x 17" 45.72 cm x 43.18 cm	26" 66 cm
overall	width	depth
	40" 101.6 cm	28" 71.12 cm
arms	arms height range	
	6" 15.24 cm	



66022-P

All blood drawing products are non-returnable unless they are unused in unopened, original packaging.

H SERIES,
BLOOD DRAWING CHAIRS

Clinton puts stable, hydraulic lift right where it is needed in the H Series Blood Drawing Chairs. A thick foam padded seat and backrest helps keep the patient comfortable, while the clinician positions the patient by using the chair's large, convenient foot pedal. The chair rotates freely and then can be placed snugly into position when the foot pedal is raised. Pump action on the pedal raises the chair to desired height level.

H Series, Blood Drawing Chairs feature:

- 1 1/4" square, heavy duty, all-welded, tubular steel, neutral gray, powder-coated seat frame (3.18 cm)
- Polished chrome base with black bumper
- Comfortable footrest
- Large pump-action foot pedal with snug-lock rotation
- Adjustable height and depth flip arm
- Flip arm positions in place when in use, then flips out of the way for easy exit
- Optional ClintonClean™ or padded arms available
- Height adjustable armrest
- Thick padded seat and padded, arched backrest, or E-Z-Clean, one-piece, black, plastic seat
- Easy-clean, durable vinyl in a selection of colors
- Chair-mounted options available (see page 23)
- 300 lbs. load capacity under normal use (136 kg)



Armrests are adjusted by two star knobs



Adjustable depth flip-arm



6310

H Series, Padded, Blood Drawing Chair with Padded Arms

- Padded seat and backrest
- Padded flip arm and armrests
- See page 23 for chair-mounted options
- See inside back cover for alternate arm choices

6310	seat	dimensions	seat height range
		21" x 19 1/2" 53 cm x 50 cm	20 1/4"–27 1/2" 51 cm – 70 cm
	overall	width	depth
		30 3/4" 78 cm	30" 76 cm
	arms	arms height range	
		8" 20 cm	

IMPORTANT NOTE: Clinton Blood Chairs are not engineered to restrain a fainting or falling occupant. The chair's occupant should NEVER be left unattended.

H Series, Padded, Blood Drawing Chair with Padded Flip Arm and Drawer

- Padded seat and backrest
- Padded flip arm and armrest
- ClintonClean™ drawer top
- One-piece, all-plastic drawer
- See page 23 for chair-mounted options
- See inside back cover for alternate arm choices

6320	seat	dimensions	seat height range
		21" x 19 1/2" 53 cm x 50 cm	20 1/4"–27 1/2" 51 cm – 70 cm
	overall	width	depth
		38" 97 cm	30" 76 cm
	arms	arms height range	
		8" 20 cm	



6320

H Series, E-Z-Clean, Blood Drawing Chair with ClintonClean™ Arms

- E-Z-Clean, one-piece, black, plastic seat
- ClintonClean™ flip arm and armrests
- See page 23 for chair-mounted options
- See inside back cover for alternate arm choices

6330-P	seat	dimensions	seat height range
		18" x 17" 46 cm x 43 cm	20 1/4"–27 1/2" 51 cm – 70 cm
	overall	width	depth
		30 3/4" 78 cm	30" 76 cm
	arms	arms height range	
		8" 18 cm	



6330-P

H Series, E-Z-Clean, Blood Drawing Chair with ClintonClean™ Flip Arm and Drawer

- E-Z-Clean, one-piece, black, plastic seat
- ClintonClean™ flip arm and armrest
- ClintonClean™ drawer top
- One-piece, all-plastic drawer
- See page 23 for chair-mounted options
- See inside back cover for alternate arm choices

6340-P	seat	dimensions	seat height range
		18" x 17" 46 cm x 43 cm	20 1/4"–27 1/2" 51 cm – 70 cm
	overall	width	depth
		38" 97 cm	30" 76 cm
	arms	arms height range	
		8" 18 cm	



6340-P

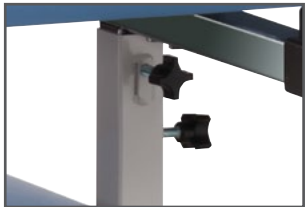
All blood drawing products are non-returnable unless they are unused in unopened, original packaging.

POWER SERIES,
BLOOD DRAWING CHAIRS

Clinton Power Series, Blood Drawing Chairs are the top of the Clinton Line. Great looks, smooth electric height adjustment and the classic comfort of Clinton padded surfaces make the Clinton Power Series some of the best power chairs in their class.

Power Series, Blood Drawing Chairs feature:

- 1 1/4" square, heavy duty, all-welded, tubular steel, neutral gray, powder-coated frame (3 cm)
- Contemporary, brushed aluminum, motor casing
- Power supplies and motors meet UL 60601-1 and CAN/CSA C22.2 601.1
- Hands-free, foot pedal controller
- Adjustable height and depth flip arm
- Flip arm(s) positions in place when in use, then flips out of the way for easy exit
- Optional ClintonClean™ arms available
- Height adjustable armrest
- Easy-clean, durable vinyl in a selection of colors
- Chair-mounted options available (see page 23)
- 375 lbs. load capacity under normal use (170 kg)



Armrests are adjusted by two star knobs



Adjustable depth flip-arm



6341

Power Series, Blood Drawing Chair with Padded Arms

- Padded seat and backrest
- Padded flip arm and armrests
- See page 23 for chair-mounted options
- See inside back cover for alternate arm choices

6341	seat	dimensions	seat height range
		21" x 18" 53 cm x 46 cm	21 1/2"-29 1/2" 55 cm – 75 cm
	overall	width	depth
		32" 81 cm	30" 76 cm
	arms	arms height range	
		8" 20 cm	

IMPORTANT NOTE: Clinton Blood Drawing Chairs are not engineered to restrain a fainting or falling occupant. The chair's occupant should NEVER be left unattended.

Power Series, Blood Drawing Chair with Padded Flip Arm and Drawer

- Padded seat and backrest
- Padded flip arm and armrest
- ClintonClean™ drawer top
- One-piece, all-plastic drawer
- See page 23 for chair-mounted options
- See inside back cover for alternate arm choices

6342	seat	dimensions	seat height range
		21" x 18" 53 cm x 46 cm	21 1/2"-29 1/2" 55 cm – 75 cm
	overall	width	depth
		38 3/4" 98 cm	30" 76 cm
	arms	arms height range	
		8" 20 cm	



6342

Power Series, Extra-Wide, Blood Drawing Chair with Padded Arms

- Padded seat and backrest
- Dual, padded flip arms and armrests
- See page 23 for chair-mounted options
- See inside back cover for alternate arm choices

6351	seat	dimensions	seat height range
		30" x 18" 76 cm x 46 cm	21 1/2"-29 1/2" 55 cm – 75 cm
	overall	width	depth
		40" 102 cm	30" 76 cm
	arms	arms height range	
		8" 20 cm	



6351

Power Series, Extra-Wide, Blood Drawing Chair with Padded Flip Arm and Drawer

- Padded seat and backrest
- Padded flip arm and armrest
- ClintonClean™ drawer top
- One-piece, all-plastic drawer
- See page 23 for chair-mounted options
- See inside back cover for alternate arm choices

6352	seat	dimensions	seat height range
		30" x 18" 76 cm x 46 cm	21 1/2"-29 1/2" 55 cm – 75 cm
	overall	width	depth
		48" 122 cm	30" 76 cm
	arms	arms height range	
		8" 20 cm	



6352

All blood drawing products are non-returnable unless they are unused in unopened, original packaging.

POWER SERIES, BARIATRIC,
BLOOD DRAWING CHAIRS

Clinton does the heavy lifting by putting bariatric patients in comfortable range of the phlebotomist. Clinton Power Series, Bariatric, Blood Drawing Chairs feature two powerful motors that combined have the power to lift up to 850 pounds. The travel is smooth and the chair is comfortable with an extra-wide, padded seat and padded backrest.

Power Series, Bariatric Blood Drawing
Chairs feature:

- 11/4" square, heavy duty, all-welded, tubular steel, neutral gray, powder-coated frame (3.18 cm)
- Contemporary, brushed aluminum, motor casings
- Power supplies and motors meet UL 60601-1 and CAN/CSA C22.2 601.1
- Hands-free, foot pedal controller
- Adjustable height and depth flip arm(s)
- Flip arm(s) positions in place when in use, then flips out of the way for easy exit
- Optional ClintonClean™ arms available
- Easy-clean, durable vinyl in a selection of colors (see inside back cover)
- Chair-mounted options available (see page 23)
- 850 lbs. combined load capacity under normal use (385.55 kg)



All blood drawing products are non-returnable unless they are unused in unopened, original packaging.

Power Series, Bariatric, Blood Drawing
Chair with Padded Arms

- Padded seat and backrest
- Dual, padded flip arms and armrests
- See page 23 for chair-mounted options
- See inside back cover for arm choices

6361		
seat	dimensions	seat height range
	35" x 20" 89 cm x 51 cm	21 1/2"-29 1/2" 55 cm – 75 cm
overall	width	depth
	45" 102 cm	32" 81 cm
arms	arms height range	
	8" 20 cm	

Power Series, Bariatric, Blood Drawing Chair
with Padded Flip Arm and Drawer

- Padded seat and backrest
- Padded flip arm and armrest
- ClintonClean™ drawer top
- One-piece, all-plastic drawer
- See page 23 for chair-mounted options
- See inside back cover for alternate arm choices

6362		
seat	dimensions	seat height range
	35" x 20" 89 cm x 51 cm	21 1/2"-29 1/2" 55 cm – 75 cm
overall	width	depth
	52" 132 cm	32" 81 cm
arms	arms height range	
	8" 20 cm	

IMPORTANT NOTE: Clinton Blood Drawing Chairs are not engineered to restrain a fainting or falling occupant. The chair's occupant should NEVER be left unattended.

CHAIR MOUNTED ACCESSORIES

Clinton Blood Drawing Chair Accessories extend the function of select blood drawing chairs to accommodate specific tasks and add extra storage areas.

Chair-Mounted Bin Accessory

- Fossil ClintonClean™ holder
- Removable, easy-clean, plastic bin
- Mounts to stationary arm

-641			
holder	length	width	
	12" 30 cm	9" 23 cm	
bin	length	width	depth
	10 3/4" 27 cm	8 1/4" 21 cm	3 1/2" 9 cm



-641

Chair-Mounted, Tray Accessory

- ABS vacuum-formed, arm-mounted tray rimmed on all sides
- Mounts to stationary arm
- Must be ordered with the chair

-640			
outside	length	width	
	6" 15 cm	5 1/2" 14 cm	
Inside	length	width	depth
	5" 14 cm	4 1/4" 11 cm	3/8" 1 cm



-640

Chair-Mounted, 5-Drawer Cabinet

- Laminate base
- ABS plastic vacuum-formed, easy-clean, top rimmed on all sides
- Choice of single color or two-tone laminate

NOTE: Not available for H-Series or Power Series chairs

-650			
top	width	depth	
	16" 41 cm	18" 46 cm	
cabinet	width	depth	height w/top
	13 1/2" 34 cm	17 1/2" 44 cm	27 5/8" 70 cm



-650



Optimal height and the correct position of the patient are easy with Clinton's Recliner Series, Blood Drawing Chair. This chair features a height travel range of eight inches, as well as reclining positions for upper body and legs to accommodate different procedures.

- The Recliner Series, Blood Drawing Chair features:*
- Smooth, fully electric reclining and height adjustment
 - Self leveling arms and synchronized footrest that move with chair's seat and backrest
 - Keeps patients comfortable and may better accommodate patients who may faint during a procedure
 - Power supplies and motors meet UL 60601-1 and CAN/CSA C22.2 601.1
 - Hand controller
 - All-welded, steel, neutral gray, powder-coated frame
 - Heavy duty, all-welded, steel frame
 - Padded seat, backrest, armrests and footrest
 - Armrests flip up out of the way for easy entry and exit
 - Adjustable foot levelers
 - Easy-clean, durable, vinyl in a selection of colors
 - 375 lbs. load capacity under normal use (170 kg)



Full reclining position



Full upright position

Recliner Series, Hi-Lo
Blood Drawing Chair

6810				
seat	width	depth	seat height range	
	20 1/2"	17"	22"-30"	
back	width	height	angle	
	20"	32"	25°- 75°	
footrest	width	depth	angle	
	19 1/2"	14"	5°- 90°	
overall	width	height	length retracted	length extended
	35"	50"	35"	66"
armrest	89 cm	127 cm	89 cm	168 cm
	width between armrests			
	21"			
	53 cm			

IMPORTANT NOTE: Clinton Blood Drawing Chairs are not engineered to restrain a fainting or falling occupant. The chair's

All blood drawing products are non-returnable unless they are unused in unopened, original packaging.

PEDIATRIC SERIES, BLOOD DRAWING CHAIRS

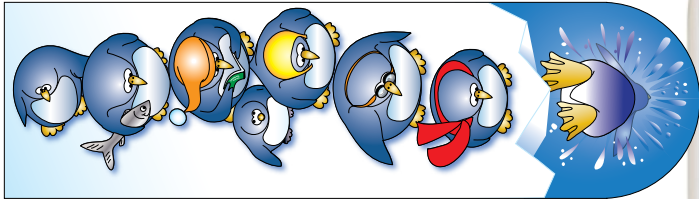
Colorful and amusing, these Clinton Kids™ pediatric chairs provide children with a whimsical distraction before and during the procedure. Plus, their extra height places the patient at an optimal height for the clinician.

Pediatric Series, Blood Drawing Chairs feature:

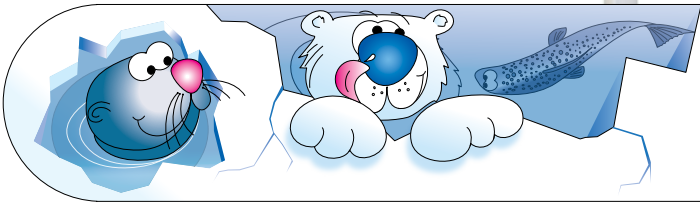
- Custom high pressure, Clinton Kids™, laminate flip arm and armrest
- Easy-clean laminate arm surfaces with black, T-molded edges
- Graphics are embedded in the laminate and are not affected by cleaning with standard disinfectants
- ClintonClean™ elbow rest
- Adjustable height and depth flip arm
- Flip arm(s) positions in place when in use, then flips out of the way for easy exit
- Height adjustable armrest
- Padded, contoured seat
- Thick, padded backrest
- Extra height reduces bending for phlebotomist
- Special color frame
- Special pediatric color vinyl upholstery on seat and back
- Adjustable foot levelers
- Chairs are engineered for use by adults or children
- 400 lbs. load capacity under normal use (181.43 kg)



Left Arm



Right Arm



- Pediatric Series/Arctic Circle, Blood Drawing Chair**
- Custom laminate, Arctic Circle flip arm and right armrest
 - Arctic White frame
 - North Wind Blue vinyl upholstery

66011-AC

seat	dimensions	seat height	
	17 ¹ / ₂ " x 18"	26"	
	44 cm x 46 cm	66 cm	
overall	width	depth	height
	31"	27"	42 ¹ / ₂ "
	79 cm	69 cm	108 cm
arms	arms height range		
	6"		
	15 cm		

IMPORTANT NOTE: Clinton Blood Drawing Chairs are not engineered to restrain a fainting or falling occupant. The chair's occupant, especially children, should NEVER be left unattended.



All blood drawing products are non-returnable unless they are unused in unopened, original packaging.



- Pediatric Series/Arctic Circle, Extra-Wide, Blood Drawing Chair**
- Custom laminate, Arctic Circle flip arms
 - Arctic White frame
 - North Wind Blue vinyl upholstery
 - Extra width accommodates a parent and child

66099-AC

seat	dimensions	seat height	
	35" x 18"	26"	
	89 cm x 45.72 cm	66 cm	
overall	width	depth	height
	46"	26"	42 ¹ / ₂ "
	117 cm	66 cm	108 cm
arms	arms height range		
	6"		
	15 cm		



Pediatric Series/Spring Garden,
Blood Drawing Chair

- Custom laminate, Spring Garden flip arm and right armrest
- Spring Green frame
- Garden Green vinyl upholstery

66011-SG

seat	dimensions	seat height	
	17 ¹ / ₂ " x 18"	26"	
	44 cm x 46 cm	66 cm	
overall	width	depth	height
	31"	27"	42 ¹ / ₂ "
	79 cm	69 cm	108 cm
arms	arms height range		
	6"		15 cm

Left Arm



Right Arm



66011-SG



Pediatric Series/Spring Garden,
Extra-Wide, Blood Drawing Chair

- Custom laminate, Spring Garden flip arms
- Spring Green frame
- Garden Green vinyl upholstery
- Extra width accommodates a parent and child

66099-SG

seat	dimensions	seat height	
	35" x 18"	26"	
	89 cm x 45.72 cm	66 cm	
overall	width	depth	height
	46"	26"	42 ¹ / ₂ "
	117 cm	66 cm	108 cm
arms	arms height range		
	6"		15 cm



66099-SG

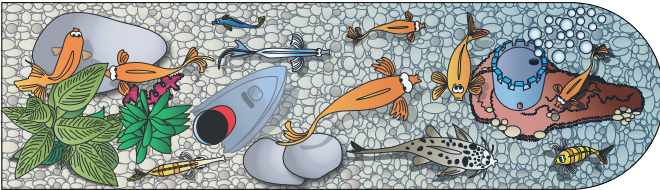
Pediatric Series/Aquarium,
Blood Drawing Chair

- Custom laminate, Aquarium flip arm and right armrest
- Tropical Blue frame
- Sea Mist vinyl upholstery

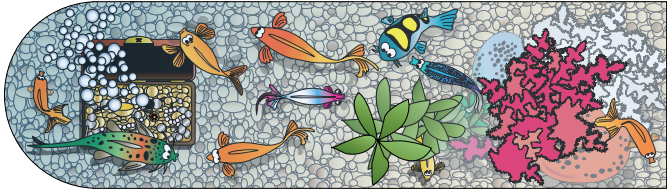
66011-AQ

seat	dimensions	seat height	
	17 ¹ / ₂ " x 18"	26"	
	44 cm x 46 cm	66 cm	
overall	width	depth	height
	31"	27"	42 ¹ / ₂ "
	79 cm	69 cm	108 cm
arms	arms height range		
	6"		15 cm

Left Arm



Right Arm



66011-AQ



Pediatric Series/Aquarium,
Extra-Wide, Blood Drawing Chair

- Custom laminate, Aquarium flip arms
- Tropical Blue frame
- Sea Mist vinyl upholstery
- Extra width accommodates a parent and child

66099-AQ

seat	dimensions	seat height	
	35" x 18"	26"	
	89 cm x 45.72 cm	66 cm	
overall	width	depth	height
	46"	26"	42 ¹ / ₂ "
	117 cm	66 cm	108 cm
arms	arms height range		
	6"		15 cm



66099-AQ

PEDIATRIC/INFANT SERIES,
BLOOD DRAWING STATIONS

There is nothing like a big yellow zoo bus filled with animal friends, or a friendly fire truck "manned" by smiling Dalmatians to reduce anxiety and distract children from the task at hand. Clinton Pediatric Blood Drawing Stations are inviting and practical, because they look great and can accommodate both infants and small children.

Pediatric/Infant Series, Blood Drawing Vehicle Stations feature:

- Padded flip arm and armrests
- Padded seat and padded backrest
- Padded top for infants
- Two storage compartments, one on the side and one on the back end
- Paper dispenser for table paper use on the padded surface with infants
- No-peel graphics embedded into high pressure custom laminate on both sides
- Levelers under each wheel
- Large storage capacity
- 200 lbs. load capacity under normal use (90.71 kg)
- Optional coordinating step stool available



Pediatric Series, Zoo Bus, Blood Drawing Station

67020		
seat	width	depth
	17" 43 cm	14" 36 cm
flat top section	width	depth
	42" 107 cm	25" 64 cm
overall	length	width
	63" 160 cm	30" 76 cm

Optional Koala Step Stool

- Graphics on both long sides
- Skid-resistant tread on top

10-K		
width	depth	height
	20" 51 cm	16" 41 cm
depth	width	height
	16" 41 cm	7" 18 cm

IMPORTANT NOTE: Clinton Blood Drawing Stations are not engineered to restrain a fainting or falling occupant. Children and infants should NEVER be left unattended on or around the station.



Pediatric Series, Engine K-9, Blood Drawing Station

67030		
seat	width	depth
	17" 43 cm	14" 36 cm
flat top section	width	depth
	42" 107 cm	25" 64 cm
overall	length	width
	63" 160 cm	30" 76 cm

Optional Dalmatian Step Stool

- Graphics on both long sides
- Skid-resistant tread on top

10-D		
width	depth	height
	20" 51 cm	16" 41 cm
depth	width	height
	16" 41 cm	7" 18 cm

Clinton designs and manufactures pediatric/infant blood drawing stations that are easy to use, durable and patient friendly. Choose from sleek classic style models or Clinton Kids™ Imagination Series models with fun graphics embedded right in the laminate so they won't tear or peel off.

Pediatric/Infant Series, Blood Drawing Stations feature:

- Easy-clean padded tops
- Stainless Steel frame or durable laminate panel construction
- Nylon glides on all models
- 200 lbs. load capacity under normal use (90.71 kg)

IMPORTANT NOTE: Clinton Blood Drawing Stations are not engineered to restrain a fainting or falling occupant. Children and infants should NEVER be left unattended on or around the station.



Stainless Steel, Infant Blood Drawing Station

- All-welded, stainless steel frame
- Top has 2 rims
- 2 safety straps
- Plastic work tray Included
- Removable middle padded section

6077			
overall	width	length	height
	20 1/2" 52 cm	39" 99 cm	39 1/2" 100 cm
top	width	length	
	20" 51 cm	32" 81 cm	

Panel Leg, Infant Blood Drawing Station with Shelf

- All laminate construction
- Top rimmed on 3 sides for safety
- Easy-clean, center pad

67114			
overall	width	length	height
	25" 64 cm	43" 109 cm	39 1/2" 100 cm
top	width	length	
	25" 64 cm	43" 109 cm	

Panel Leg, Infant Blood Drawing Station

- All laminate construction
- Top rimmed on 3 sides for safety
- Easy-clean, center pad

67110			
overall	width	length	height
	25" 64 cm	43" 109 cm	39 1/2" 100 cm
top	width	length	
	25" 64 cm	43" 109 cm	



67110

Imagination Series/Rainforest Follies, Infant Blood Drawing Station with 2 Doors

- All laminate construction
- Top rimmed on 3 sides for safety
- Easy-clean, center pad
- Large, 2-door storage
- Clinton Kids™ graphics embedded in the laminate will not tear or peel

67132			
overall	width	length	height
	25" 64 cm	43" 109 cm	39 1/2" 100 cm
top	width	length	
	25" 64 cm	43" 109 cm	



67132

Imagination Series/Space Place, Infant Blood Drawing Station with 2 Doors

- All laminate construction
- Top rimmed on 3 sides for safety
- Easy-clean, center pad
- Large, 2-door storage
- Clinton Kids™ graphics embedded in the laminate will not tear or peel

67135			
overall	width	length	height
	25" 64 cm	43" 109 cm	39 1/2" 100 cm
top	width	length	
	25" 64 cm	43" 109.2 cm	



67135

Imagination Series/Ocean Commotion, Infant Blood Drawing Station with 2 Doors

- All laminate construction
- Top rimmed on 3 sides for safety
- Easy-clean, center pad
- Large, 2-door storage
- Clinton Kids™ graphics embedded in the laminate will not tear or peel

67136			
overall	width	length	height
	25" 64 cm	43" 109 cm	39 1/2" 100 cm
top	width	length	
	25" 64 cm	43" 109 cm	



67136

PEDIATRIC SERIES,
MOBILE CABINETS

Clinton Kids™ Imagination Series graphics are featured on two convenient, mobile phlebotomy cabinets. All laminate construction makes them durable and the graphics are embedded in the laminate so they are easy to clean and won't wear off, tear or peel.

Pediatric Series, Mobile, Phlebotomy Cabinets feature:

- Clinton Kids™ graphics embedded in laminate will not tear or peel
- Doors have soft-close hinges
- Large storage space with two adjustable shelves
- Easy-clean, vacuum-formed, gray, ABS plastic top with textured finish and raised rim on all sides
- Black chrome pulls
- Smooth rolling, 3" ballbearing casters (7.62 cm)
- Optional door locks available



Pediatric/Alley Cats & Dogs, Mobile Phlebotomy Cabinet *(opposite page)*

68937		
width	depth	height
23"	18"	35 1/2"
58 cm	46 cm	90 cm

Pediatric/Ocean Commotion, Mobile Phlebotomy Cabinet

68936		
width	depth	height
23"	18"	35 1/2"
58 cm	46 cm	90 cm



PEDIATRIC SERIES,
PHLEBOTOMY CARTS

Clinton rolls out the color with exclusive phlebotomy carts that feature Clinton Kids™ graphics that amuse children and adults alike. They have convenient storage space, ABS molded tops and large, easy-roll casters that make them perfect for moving from patient to patient and floor to floor.

Pediatric Series, Phlebotomy Carts feature:

- Clinton Kids™ graphics embedded in laminate will not tear or peel
- Lockable door with soft-close hinges
- Two, 3.5" x 11" x 16.5" removable plastic storage trays on easy-slide tracks (9 cm x 28 cm x 42 cm)
- Easy-clean, vacuum-formed, gray, ABS, plastic top with textured finish and raised rim on all sides
- Easy grip handle 1" diameter, powder-coated push handle
- Pneumatic height adjustment
- Stable, powder coated, 5-leg, aluminum base
- Smooth rolling, 3" ballbearing casters (7.62 cm)
- Optional glove box holder available



Two plastic bins slide on plastic channels



Optional glove box holder mounts to back (Order Single White Steel Glove Box Holder GW-2000)

Pediatric/Space Place, Phlebotomy Cart

- International Red, powder-coated base with end bumpers

67235			
top	width	depth	
	20" 51 cm	20 ³ / ₄ " 53 cm	
cabinet	width	depth	height
	13 ¹ / ₄ " 34 cm	18" 46 cm	10 ¹ / ₂ " 27 cm
base diameter	24" 61 cm		
	height range		
	33" – 43" 84 cm – 109 cm		



(Tray on top and supplies shown not included)

Pediatric/Cool Pals, Phlebotomy Cart

- Capital Blue, powder-coated base with end bumpers

67231			
top	width	depth	
	20" 51 cm	20 ³ / ₄ " 53 cm	
cabinet	width	depth	height
	13 ¹ / ₄ " 34 cm	18" 46 cm	10 ¹ / ₂ " 27 cm
base diameter	24" 61 cm		
	height range		
	33" – 43" 84 cm – 109 cm		



Pediatric/Alley Cats & Dogs, Phlebotomy Cart

- International Red, powder-coated base with end bumpers

67237			
top	width	depth	
	20" 51 cm	20 ³ / ₄ " 53 cm	
cabinet	width	depth	height
	13 ¹ / ₄ " 34 cm	18" 46 cm	10 ¹ / ₂ " 27 cm
base diameter	24" 61 cm		
	height range		
	33" – 43" 84 cm – 109 cm		



Pediatric/Ocean Commotion, Phlebotomy Cart

- Capital Blue, powder-coated base with end bumpers

67236			
top	width	depth	
	20" 51 cm	20 ³ / ₄ " 53 cm	
cabinet	width	depth	height
	13 ¹ / ₄ " 34 cm	18" 46 cm	10 ¹ / ₂ " 27 cm
base diameter	24" 61 cm		
	height range		
	33" – 43" 84 cm – 109 cm		



(Tray on top and supplies shown not included)

PHLEBOTOMY CARTS

Easy to handle and maneuver in tight spaces with ample space for supplies and equipment, Clinton's phlebotomy carts are the right fit for busy nurses and phlebotomists.

5-Leg, Phlebotomy Carts feature:

- Gray laminate cabinet construction
- Easy-clean, vacuum-formed, gray, ABS, plastic top with textured finish and raised rim on all sides
- Lockable door with soft-close hinges
- Removable plastic storage tray(s) on easy slide tracks
- Easy grip handle 1" diameter, powder-coated, push handle
- Pneumatic height adjustment
- Stable, 5-leg, aluminum base
- Smooth rolling, 3" ball bearing casters (7.62 cm)
- Optional glove box holder available



One-Bin Phlebotomy Cart

67100			
top	width	depth	
	20" 51 cm	20 ³ / ₄ " 53 cm	
cabinet	width	depth	height
	13 ¹ / ₄ " 34 cm	17 ¹ / ₄ " 44 cm	7 ³ / ₄ " 20 cm
base diameter	24"		
	61 cm		
height range	33" – 43"		
	84 cm – 109 cm		

Two-Bin Phlebotomy Cart

67200			
top	width	depth	
	20" 51 cm	20 ³ / ₄ " 53 cm	
cabinet	width	depth	height
	13 ¹ / ₄ " 34 cm	18" 46 cm	10 ¹ / ₂ " 27 cm
base diameter	24"		
	61 cm		
height range	33" – 43"		
	84 cm – 109 cm		

H-Base, Phlebotomy Carts feature:

- Gray laminate cabinet construction
- Easy-clean, vacuum-formed, gray, ABS, plastic top with textured finish and raised rim on all sides
- Lockable door with soft-close hinges
- Removable plastic storage tray(s) on easy-slide tracks
- Easy grip, 1" powder-coated steel tubing handle
- Pneumatic height adjustment
- H-leg, powder-coated steel base
- Smooth rolling, 3" ballbearing casters (7.62 cm)
- Optional glove box holder available

Small, H-Base, Pneumatic, Two-Bin Phlebotomy Cart

67202			
top	width	depth	
	20" 50.8 cm	20 ¹ / ₂ " 52 cm	
cabinet	width	depth	height
	13 ¹ / ₄ " 33.65 cm	18" 45.72 cm	10 ¹ / ₂ " 26.67 cm
height range	29" – 42 ³ / ₄ "		
	73.66 cm – 108.58 cm		

Large, H-Base, Pneumatic, Four-Bin Phlebotomy Cart

67203			
top	width	depth	
	20" 51 cm	20 ¹ / ₂ " 52 cm	
cabinet	width	depth	height
	13 ¹ / ₄ " 34 cm	17 ³ / ₄ " 45 cm	19 ¹ / ₂ " 50 cm
height range	29" – 42 ³ / ₄ "		
	74 cm – 109 cm		



Optional glove box holder mounts to back (Order Single White Steel Glove Box Holder GW-2000)

One or two plastic bins slide on plastic channels



(Tray on top and supplies shown not included)

Two plastic bins slide on plastic channels



1" powder-coated, steel tubing handle



(Tray on top and supplies shown not included)



Four plastic bins slide on plastic channels

(Tray on top and supplies shown not included)

PHLEBOTOMY STANDS & WORK STATIONS

Phlebotomy stands and work stations are a quick, easy and economical way to keep frequently used supplies at your fingertips. Stable base allow for easy positioning for work or for moving out of the way when not in use.

Phlebotomy Stands & Work Stations feature:

- Cleanable work surfaces
- Adjustable heights
- Durable construction



Two-Bin, Mobile, Phlebotomy Stand

- ClintonClean™ solid plastic top
- Chrome plated steel pole with knob-lock adjustment
- 5-leg, cast aluminum base with bumper guards
- 2" dual wheel, soft roll casters
- Two easy to remove drop-in bins/11" L x 8 1/4" W x 3 1/2" D
(28 cm L x 21 cm W x 9 cm D)

6902		
top	width 13 1/2" 34 cm	depth 21" 53 cm
base diameter	23" 58.42 cm	
height range	30" – 38" 76 cm – 97cm	

(Supplies shown not included)



One-Bin, Mobile, Phlebotomy Stand

- ClintonClean™ solid plastic top
- Chrome plated, steel pole with knob-lock adjustment
- 4-leg, epoxy-coated stand with bumper guards
- 2" rubber wheel, ball bearing casters
- One easy to remove drop-in bin/16 1/2" L x 11" W x 2 1/2" D
(42 cm L x 28 cm W x 6 cm D)

6901		
top	width 15" 38 cm	depth 21 1/2" 55 cm
base diameter	22" 56 cm	
height range	30" – 38" 76 cm – 97 cm	



Mobile, Phlebotomy Work Station

- Easy-clean, vacuum-formed, gray, ABS, plastic top with textured finish and raised rim on all sides
- 5-leg, cast aluminum base with bumper guards
- 2" dual wheel, soft roll casters

6900		
top	width 15 3/4" 40 cm	depth 18" 46 cm
base diameter	24" 61 cm	
height range	29 1/2" – 36" 75 cm – 91 cm	



Mobile, Phlebotomy Work Station with Bin

- Easy-clean, vacuum-formed, gray, ABS, plastic with textured finish and raised rim on all sides
- 5-leg, cast aluminum base with bumper guard
- 2" dual wheel, soft roll casters
- One easy to remove drop-in bin/10 3/4" L x 8 1/4" W x 3 1/2" D
(28 cm L x 21 cm W x 9 cm D)

6900-B		
top	width 27 1/4" 70 cm	depth 18" 46 cm
base diameter	24" 60.96 cm	
height range	27 1/4" – 42 1/4" 69 cm – 107 cm	



(Supplies shown on all models not included)

All blood drawing products are non-returnable unless they are unused in unopened, original packaging.



- Wheelchair Blood Drawing Station**
- Wall-mounted for secure, dependable performance
 - Adjustable height and depth
 - Armrest positions in place when in use, then flips out of the way for easy exit
 - Comfortable 2" padding
 - Easy-clean, heavyweight, vinyl upholstery
 - Two knobs position chrome armrest

6088	depth adjustment	height adjustment
	24" – 36"	26" – 39"
overall	61 cm – 91 cm	66 cm – 99 cm
armrests	width	length
	6"	24"
	15 cm	61 cm



Conveniently stores against wall out of the way of foot traffic.

- Half Round, Stationary, Padded Phlebotomy Stand**
- Vinyl upholstered, padded surface
 - Easy-clean, 10³/₄" L x 8¹/₄" W x 3¹/₂" D plastic bin (28 cm L x 21 cm W x 9 cm D)
 - Chrome plated steel pole with knob-lock height adjustment
 - 5-leg, cast aluminum base with black, non-marking, nylon glides

6940	depth	radius width
top	22"	11"
	56 cm	28 cm
base diameter	23"	58 cm
height range	30" – 38"	76 cm – 97 cm



(Supplies shown on all models not included)

- Half Round, Stationary, ClintonClean™ Phlebotomy Stand**
- ClintonClean™ solid plastic top
 - Easy-clean, 11" L x 8¹/₄" W x 3¹/₂" D plastic bin (28 cm L x 21 cm W x 9 cm D)
 - Chrome plated steel pole with knob-lock adjustment
 - 5-leg, cast aluminum base with black, non-marking, nylon glides

6950	depth	radius width
top	22"	11 ¹ / ₂ "
	56 cm	29 cm
base diameter	23"	58.42 cm
height range	30" – 38"	76 cm – 97 cm



6940 Demo



6950 Demo



ClintonClean™ Bedside Cabinet

- 1 self closing drawer and door
- 1 adjustable shelf
- 2" high rimmed top on 3 sides
- Drawer glides on nylon rollers
- Laminate interiors or optional solid plastic construction
- Concealed, soft-close, adjustable door hinges

8711-P	width	depth	height
	17 ¹ / ₄ "	15 ¹ / ₄ "	29"
	44 cm	39 cm	74 cm

ClintonClean™ Mobile Bedside Cabinet

- 1 self closing drawer and door
- 1 adjustable shelf
- 2" high rimmed top on 3 sides
- Drawer glides on nylon rollers
- Concealed, soft-close, adjustable door hinges
- Laminate interiors or optional solid plastic construction
- Cabinet is mounted on dual wheel casters

8720-P	width	depth	height
	17 ¹ / ₄ "	15 ¹ / ₄ "	29"
	44 cm	39 cm	74 cm

ClintonClean™ Treatment Cabinet with 2 Doors

- 1 adjustable shelf
- Concealed, soft-close, adjustable door hinges
- Solid plastic exterior surfaces
- Laminate interiors or optional solid plastic construction
- Solid plastic top with 3¹/₄" backsplash (8 cm)

8820-P	width	depth	height
	24"	18 ¹ / ₄ "	35"
	61 cm	46 cm	89 cm

Mobile Treatment Cabinet/2 Doors & 2 Drawers

- 1 adjustable shelf
- Concealed, soft-close, adjustable door hinges
- Solid plastic exterior surfaces
- Laminate interiors or optional solid plastic construction
- Solid plastic top with 3¹/₄" backsplash (8 cm)
- Mounted on dual wheel swivel casters

8902-P	width	depth	height
	24"	18 ¹ / ₄ "	34 ¹ / ₄ "
	61 cm	46 cm	90 cm



8811-P



8720-P



8820-P



8902-P

ClintonClean™ Treatment Cabinet with 2 Doors & 1 Drawer

- 1 adjustable shelf
- Smooth-glide, drawer with metal sides that hold up to 75 lbs. (34 kg)
- Concealed, soft-close, adjustable door hinges
- Solid plastic exterior surfaces
- Laminate interiors or optional solid plastic construction
- Solid plastic top with 3¹/₄" backsplash (8 cm)
- Self-closing doors and drawer with bumpers

8821-P	width	depth	height
	24"	18 ¹ / ₄ "	35"
	61 cm	46 cm	89 cm

ClintonClean™ Mobile Treatment Cabinet with 2 Doors & 1 Drawer

- Mounted on dual wheel swivel casters
- 1 adjustable shelf
- Smooth-glide, drawer with metal sides that hold up to 75 lbs. (34 kg)
- Self-closing doors with bumpers
- Concealed, soft-close, adjustable door hinges
- Solid plastic exterior surfaces
- Laminate interior or optional plastic interiors
- Solid plastic top with 3¹/₄" backsplash (8 cm)

8921-P	width	depth	height
	24"	18 ¹ / ₄ "	35 ¹ / ₄ "
	61 cm	46 cm	90 cm

ClintonClean™ Treatment Cabinet with 5 Drawers

- Smooth glide tracks for easy open and close
- Drawers with metal sides that hold up to 75 lbs. (34 kg)
- Solid plastic exterior surfaces
- Laminate interiors or optional solid plastic construction
- Solid plastic top with 3¹/₄" backsplash (8 cm)
- Self-closing drawers with bumpers

8805-P	width	depth	height
	24"	18 ¹ / ₄ "	35"
	61 cm	46 cm	89 cm

ClintonClean™ Mobile Treatment Cabinet with 5 Drawers

- Mounted on dual wheel swivel casters
- Smooth-glide, drawers with metal sides that hold up to 75 lbs. (34 kg)
- Solid plastic exterior surfaces
- Laminate interior or optional plastic interiors
- Solid plastic top with 3¹/₄" backsplash (8 cm)

8950-P	width	depth	height
	24"	18 ¹ / ₄ "	35 ¹ / ₄ "
	61 cm	46 cm	90 cm



8821-P



8921-P



8805-P



8950-P



800-441-9131 • 717-848-3519

Toll-Free Fax 866-522-1233

Fax 717-843-5871

www.clinton-ind.com