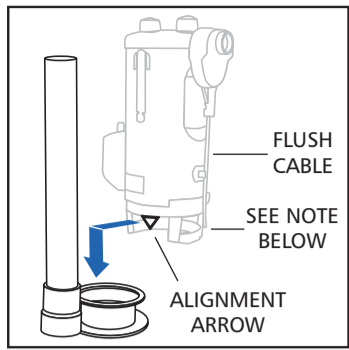
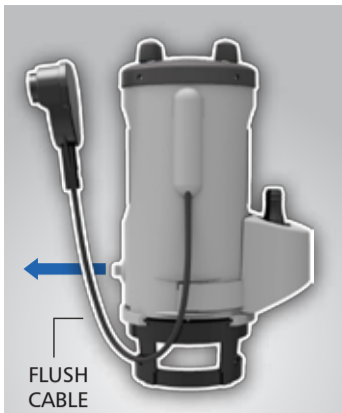


SECTION 4: INSTALLING THE DUO FLUSH™ VALVE



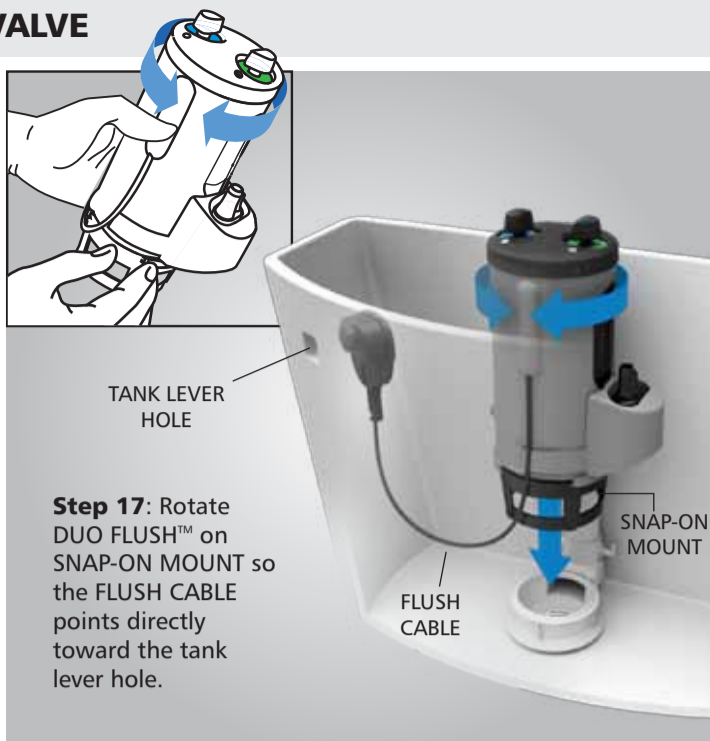
Step 14: Remove foam around ADJUSTMENT DIALS.

Step 15: Locate white arrow on SNAP-ON MOUNT and align it facing the OVERFLOW PIPE. Do not install yet.

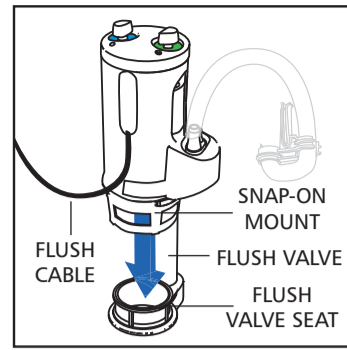


Step 16: Unsnap FLUSH CABLE from DUO FLUSH™.

Note: Make sure not to sharply bend or kink the FLUSH CABLE.

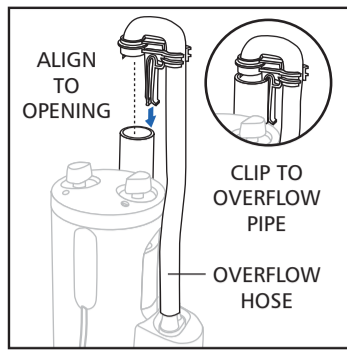


Step 17: Rotate DUO FLUSH™ on SNAP-ON MOUNT so the FLUSH CABLE points directly toward the tank lever hole.



Step 18: Press DUO FLUSH onto seat.

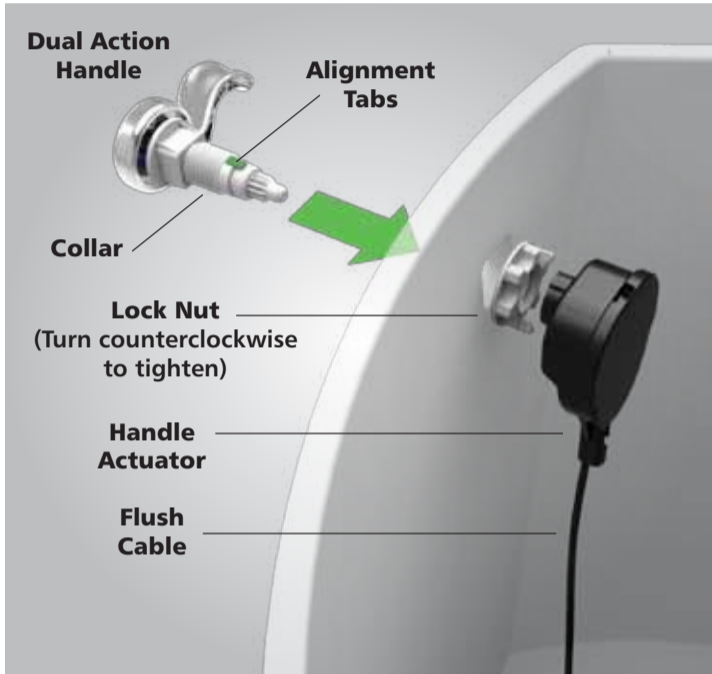
Note: Be sure the FLUSH CABLE is not caught between the SNAP-ON MOUNT and the FLUSH VALVE SEAT when installing.



Step 19: Attach the OVERFLOW HOSE to the top of the OVERFLOW PIPE via the black plastic OVERFLOW HOSE CLIP. Ensure that the opening of the OVERFLOW HOSE is directly aligned with the opening of the OVERFLOW PIPE.

Note: Keep end of hose above overflow pipe. If hose is positioned down into overflow pipe, it will siphon water to bowl.

SECTION 5: INSTALLING THE DUAL ACTION HANDLE



Lock Nut
(Turn counterclockwise to tighten)

Handle Actuator

Flush Cable

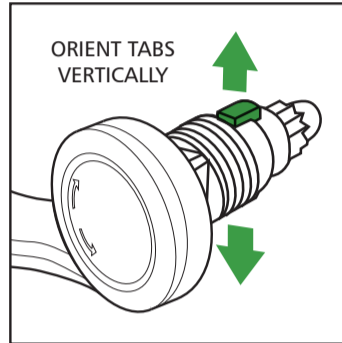


REMOVE LOCK NUT

TURN LOCK NUT CLOCKWISE TO LOOSEN

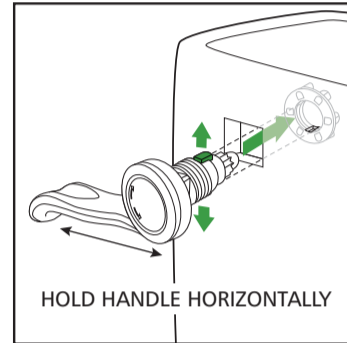
Step 20: Remove the HANDLE from the green bag labeled D.

Step 21: Unthread LOCK NUT in a clockwise rotation on HANDLE.



ORIENT TABS VERTICALLY

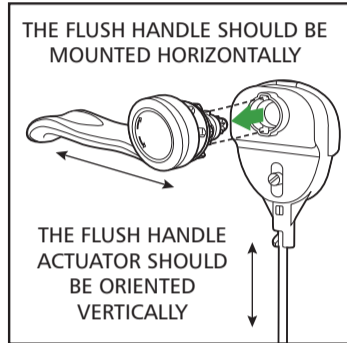
Step 22: Rotate handle COLLAR so alignment tabs are positioned vertically.



Step 23: Insert the HANDLE into toilet hole.

Step 24: Install nut counter-clockwise to tighten.

Step 25: Ensure that the HANDLE is positioned horizontally by holding handle horizontally before snapping into place into tank.

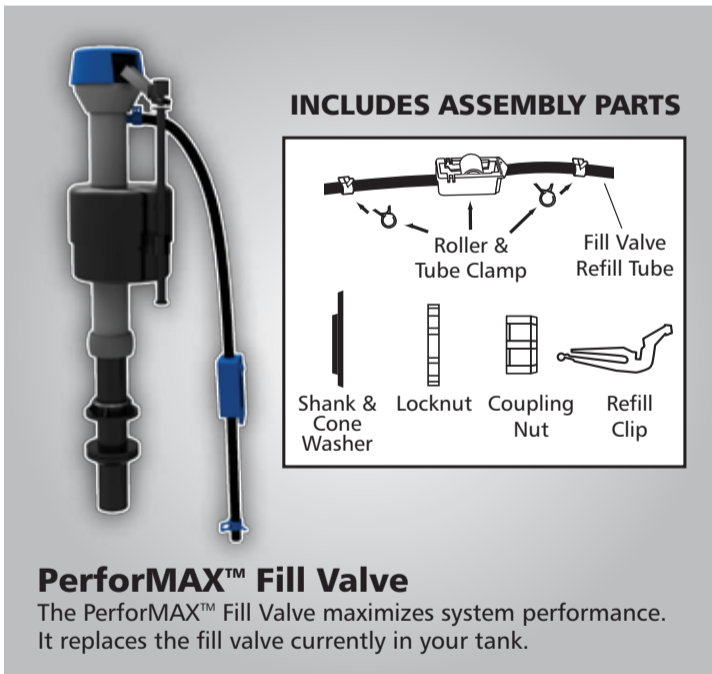


THE FLUSH HANDLE SHOULD BE MOUNTED HORIZONTALLY

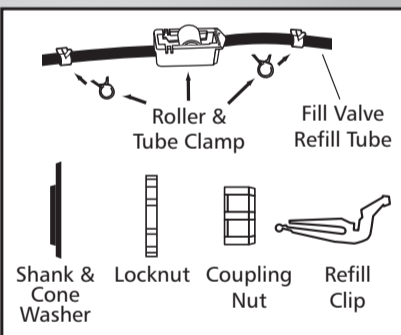
THE FLUSH HANDLE ACTUATOR SHOULD BE ORIENTED VERTICALLY

Step 26: Attach HANDLE ACTUATOR to the handle COLLAR on HANDLE. If necessary, rotate DUO FLUSH™ on SNAP-ON MOUNT so the FLUSH CABLE angles toward the tank lever hole.

SECTION 6: INSTALLING THE PerformAX™ FILL VALVE

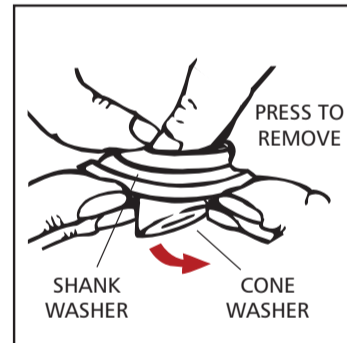
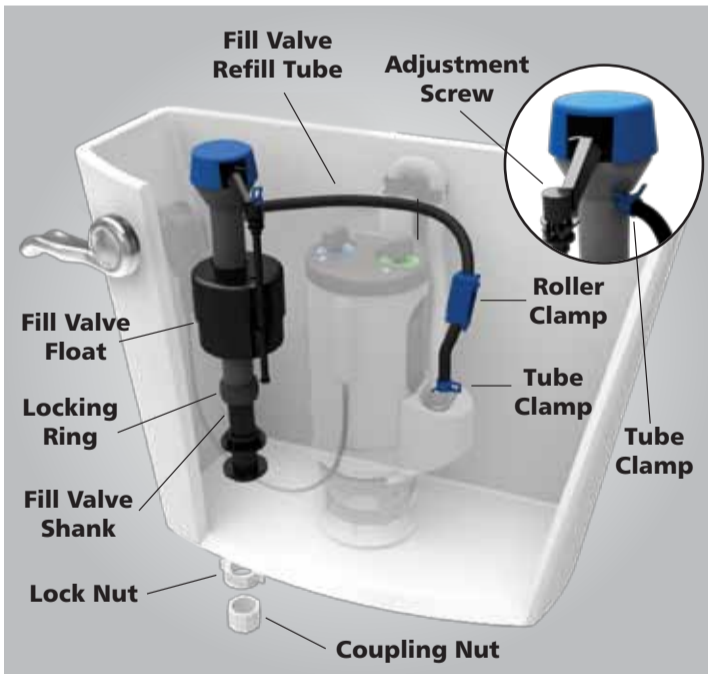


INCLUDES ASSEMBLY PARTS

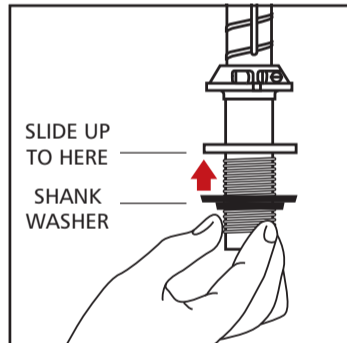


PerformAX™ Fill Valve

The PerformAX™ Fill Valve maximizes system performance. It replaces the fill valve currently in your tank.

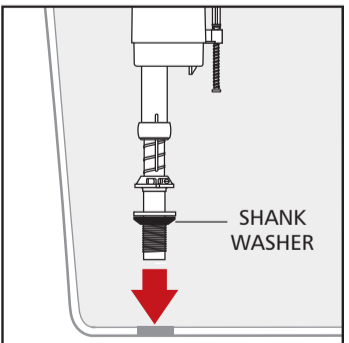


Step 27: Disassemble small parts from red bag labeled "PerformAX" Fill Valve." Locate the shank washer and separate the cone washer from its center. Press to remove the cone washer from the center of the shank washer as shown above.

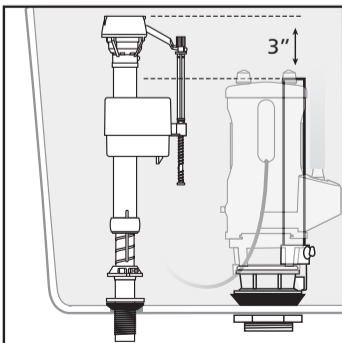


Step 28: Place the SHANK WASHER on the FILL VALVE SHANK (oriented with the tapered side down as shown) and slide it up to be flush with the SHANK STOP.

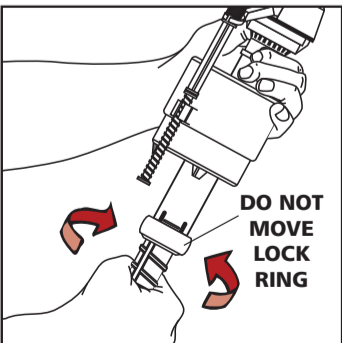
SECTION 7: ADJUSTING THE HEIGHT OF THE PerformAX™ FILL VALVE



Step 29: Place the FILL VALVE in the tank to check height. Do not attach yet.

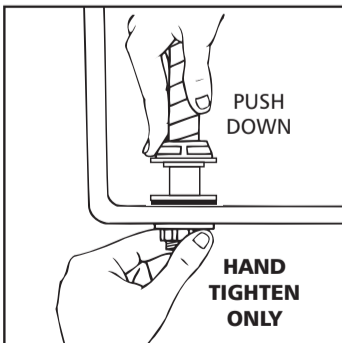


Step 30: Check the height of the PerformAX™ FILL VALVE. It must be 3" higher than the OVERFLOW TUBE.

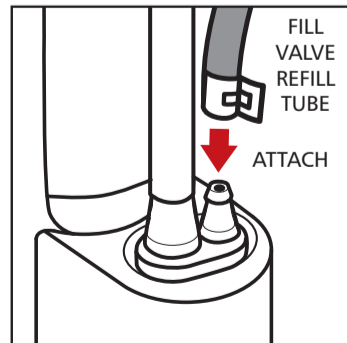


Step 31: Adjust height of FILL VALVE by turning lower shank in or out of valve body. **DO NOT MOVE LOCK RING.**

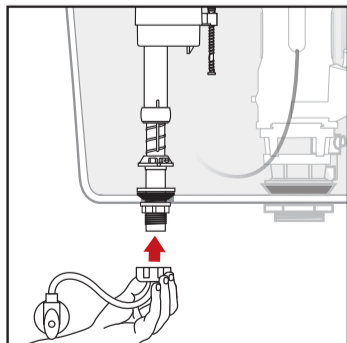
SECTION 8: INSTALLING AND CONNECTING THE PerformAX™ FILL VALVE



Step 32: Place the PerformAX™ FILL VALVE in the tank. Fasten the LOCK NUT to the FILL VALVE THREADED SHANK. **Hand tighten. (Do not overtighten.)**



Step 33: Attach the free end of the black FILL VALVE REFILL TUBE from the PerformAX™ FILL VALVE to the small nipple on the WATER SAVING REFILL MODULE. Ensure the HOSE CLAMP is secure.



Step 34: Identify your water supply line by using steps 36A - 36E to determine the assembly parts required to properly reconnect the water supply line.

PROCEED TO FOLLOWING PAGE FOR NEXT STEPS

SECTION 9: RECONNECTING THE WATER SUPPLY: CONNECTION TYPES



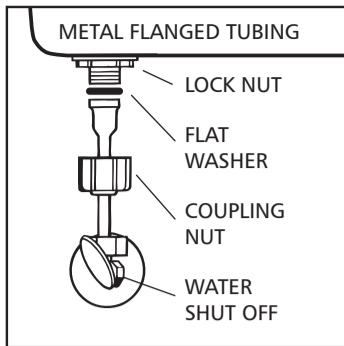
Warning

Plastic nut. HAND TIGHTEN ONLY. DO NOT over-tighten.

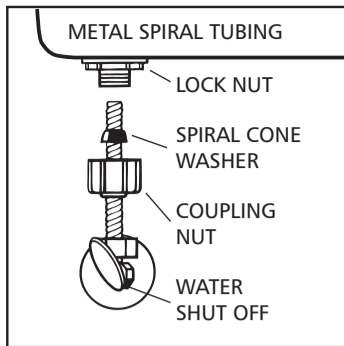
DO NOT use plumber's putty to seal fittings (The use of Teflon tape is optional).

DO NOT use thread lubricants.

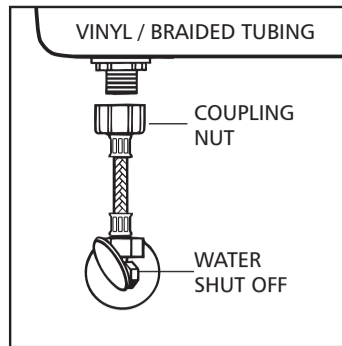
Use of thread sealants or lubricants can damage plastic nut and result in flooding and property damage.



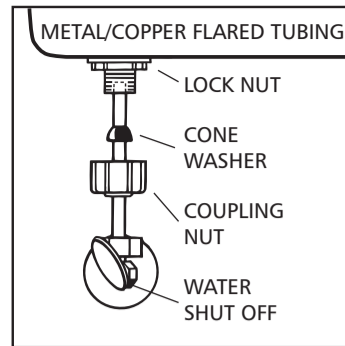
Step 35A: If your water supply line has METAL FLANGED TUBING as shown above, use existing hardware to reconnect the water supply as indicated.



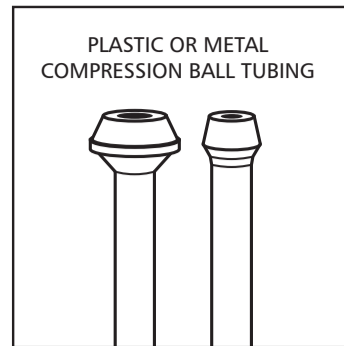
Step 35B: If your water supply line has METAL SPIRAL TUBING as shown above, use existing hardware to reconnect the water supply as indicated.



Step 35C: If your water supply line has VINYL OR BRAIDED TUBING as shown above, use existing hardware to reconnect the water supply as indicated.

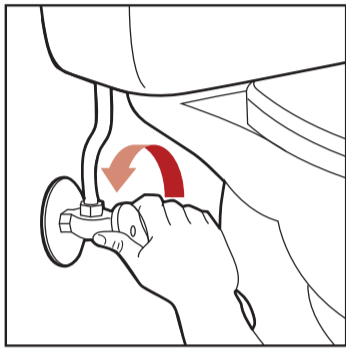


Step 35D: If your water supply line has metal/copper flared tubing, use the included Fluidmaster coupling nut and cone washer to replace existing hardware. The water supply tube must extend 1/2-inch inside the threaded FILL VALVE SHANK.

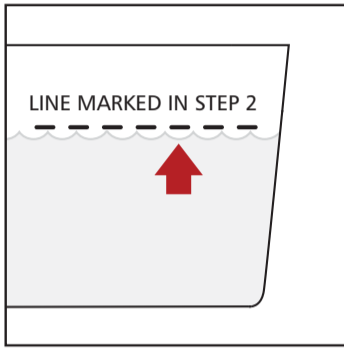


Step 35E: If your water supply line has plastic or metal compression ball tubing, do not use Fluidmaster's coupling nut and the cone washer on this type of plastic or metal tubing shown above.

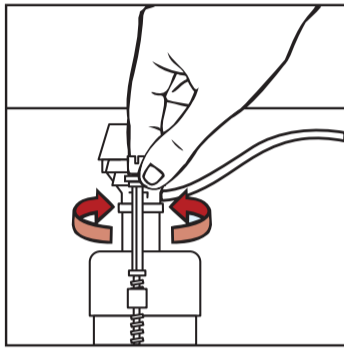
SECTION 10: ADJUSTING THE PerforMAX™ FILL VALVE



Step 36: Once connected, turn on the water supply and check for leaks.



Step 37: Compare the water level after the tank has filled with the existing water level line you marked in Step 2.



Step 38: Turn the ADJUSTMENT SCREW clockwise to increase water level, and counter-clockwise to decrease water level until you're back at the mark.

NOTE: Empty tank water before adjusting float cup.

SECTION 11: WATER LEVEL ADJUSTMENT: HALF FLUSH



Step 39: Ensure that the half flush and full flush are both set to MAX settings before you start adjusting your settings. To adjust the settings, push the knob down and turn.

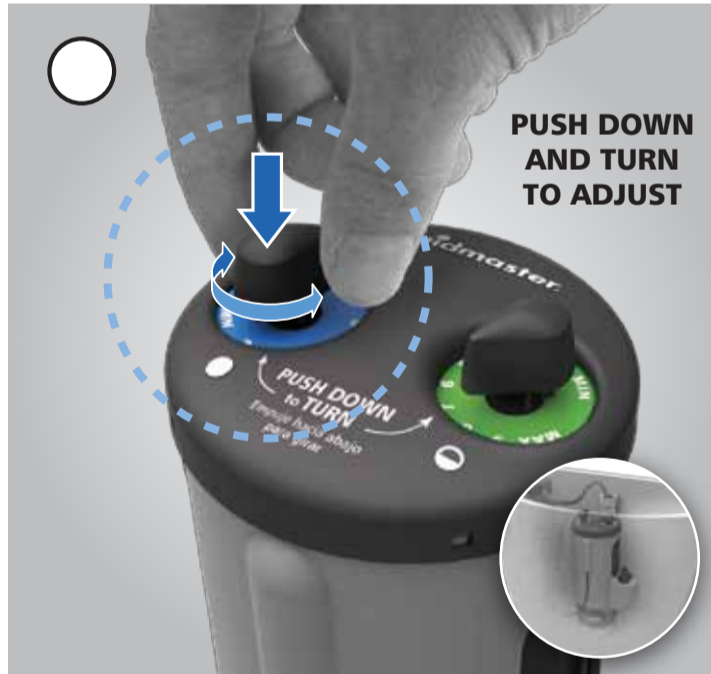
Step 40: THE ADJUSTMENT DIAL with GREEN DISC (look for the ● symbol) controls your half flush. Press down and turn to "MAX" to start.

A. Drop 3 pieces of toilet paper into the bowl and ROTATE the HANDLE upward (half flush). If the flush is successful, adjust the setting to the next lower numbered setting. Repeat step A.

B. Continue to adjust the setting to the next lowest number until the flush is not successful.

C. Adjust your setting back to the last successful flush setting that provided you with a successful flush.

SECTION 12: WATER LEVEL ADJUSTMENT: FULL FLUSH



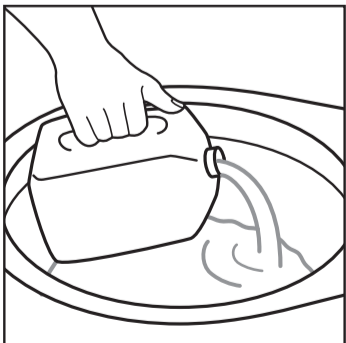
Step 41: The ADJUSTMENT DIAL with BLUE DISC (look for the ○ symbol) controls your full flush.

A. Start the full flush dial 1 setting higher than the half flush setting.

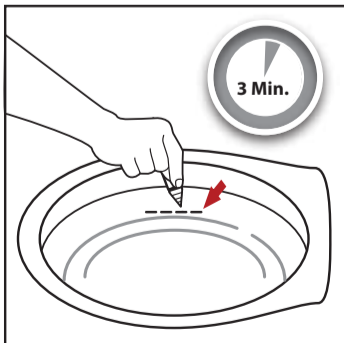
B. Drop 3 pieces of toilet paper into the bowl and ROTATE the HANDLE downward (full flush). If the flush is successful keep setting as is.

C. If the contents in your toilet bowl do not successfully flush down after use, adjust setting up to the next highest number. Repeat step B.

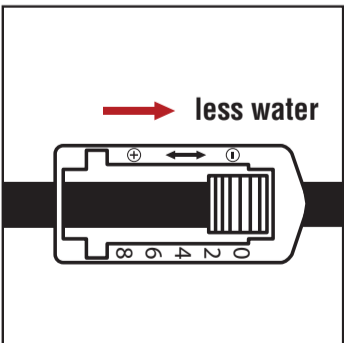
SECTION 13: CHECK WATER LEVEL IN THE BOWL



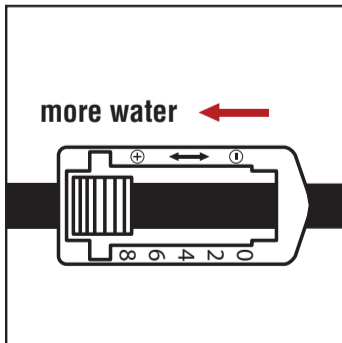
Step 42: Start by adding a gallon of water to the existing bowl water.



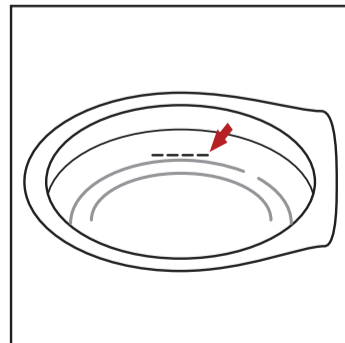
Step 43: Wait 3 minutes, allowing the water to settle and mark the water level.



Step 44: Flush the toilet. If the water reaches your mark in the bowl and the FILL VALVE is still running, push down on the roller and adjust it to the next lowest number.



Step 45: If the FILL VALVE shuts off before the water has reached your mark in the bowl, push down on the roller and adjust it to the next highest number.



Step 46: Repeat steps in SECTION 11 and SECTION 12 until the water reaches your mark at the same time the FILL VALVE stops running.

DUO FLUSH™ TROUBLESHOOTING

1. Tank Lid Interference on Half (Upward) Flush

Problem: Tank lever hits tank lid forcing the user to hold the handle

Solution: Remove handle actuator by holding the top end of actuator and pull away from dual action handle collar. DO NOT pull on FLUSH CABLE when removing the handle actuator.



Rotate handle downward 15° and reinsert actuator into handle.

If tank lever does not fit properly on your toilet tank, for further help visit www.duoflush.com or call Fluidmaster Technical Support at (800) 631-2011) M-F 7:30 am – 4:30 pm PST.

2. Seal Leaking

Problem: The tank continues to leak water causing water loss in the tank.

Solution: First remove the handle actuator by holding the top end of the actuator and pull away from dual action handle collar. Grab the top of the DUO FLUSH™ and gently rock (away from fill valve) and pull up on DUO FLUSH™.



Once released clean seat and inspect piston seal at bottom ensuring the seal is centered on piston. Reattach DUO FLUSH™ and handle actuator. Turn on water and recheck water level for leaking.

3. Water Level in Bowl is Low

Problem: Toilet bowl water level is not filling up high enough even after adjusting both adjustment dials on DUO FLUSH™.

Solution: If adjustments made per Sections 11 & 12 still do not allow for adequate water levels in your bowl (even after several attempts), follow steps A through G below:

- A.** Unclip OVERFLOW HOSE CLIP from OVERFLOW PIPE
- B.** Remove OVERFLOW HOSE from WATER SAVING REFILL MODULE nipple.
- C.** Locate FILL VALVE REFILL CLIP from fill valve assembly parts in RED BAG labeled E
- D.** Attach FILL VALVE REFILL CLIP to end of FILL VALVE REFILL TUBE
- E.** Connect FILL VALVE REFILL TUBE with clip directly to top of the OVERFLOW PIPE.
- F.** Slide HOSE CLAMP to end of FILL VALVE REFILL TUBE to hold in place.
- G.** Retry flush.

DUO FLUSH™ TROUBLESHOOTING (continued)

4. Unused Parts

Problem: Why do I have parts left over from my kit?

Solution: Depending on the type of flush valve you have identified, you may have additional parts left which may include an angled seat adaptor, brass seat adaptor, and extra fill valve assembly parts.

5. Half flush will not adequately remove waste

Move the HALF FLUSH ADJUSTMENT DIAL (Green) to a higher number to allow more water to be flushed.

6. Full flush will not adequately remove waste

Move the FULL FLUSH ADJUSTMENT DIAL (Blue) to a higher number to allow more water to be flushed.

7. Angled Seat Adapter Removal

If you need to remove the ANGLED SEAT ADAPTER from your system, pull the adapter upward firmly to release it from the FLUSH VALVE SEAT. For further assistance, call Fluidmaster Technical Support at (800) 631-2011 M-F 7:30 am - 4:30 pm PST.

More Information

Please visit our website at www.fluidmaster.com for more solutions to common toilet problems.

Do not return to the store.

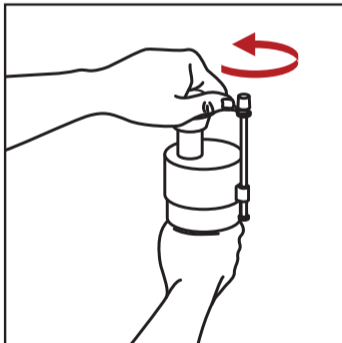
Call technical support first if you have an installation problem.

For further help visit www.duoflush.com or call Fluidmaster Technical Support at (800) 631-2011 M-F 7:30 am – 4:30 pm PST.

PerforMAX™ FILL VALVE TROUBLESHOOTING: FLUSHING OUT DEBRIS

Problem: The PerforMAX™ Fill Valve will not turn off.

Solution: Sand and rust move through water pipes. Always clear debris from water lines. Refer to the following steps for "Flushing Out Debris."

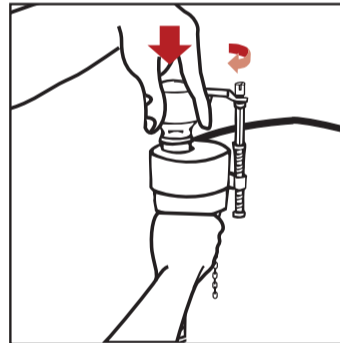


Step 1: Turn off water and flush toilet.

Push float up with right hand (see picture). Grip and hold shaft under float with right hand. With left hand, twist cap and lever counter clockwise 1/8th of a turn to unlock. Let cap assembly hang on float cup



Step 2: FLUSHING OUT DEBRIS: Hold a cup over the uncapped valve to prevent splashing. Turn water supply full on and off a few times. Leave water supply off.



Step 3: REPLACING VALVE CAP ASSEMBLY
A.) Place cap assembly on top of valve body by aligning cap arm and adjustment rod next to refill hose).
B.) Press down on top cap rotating top & arm clockwise to locked position.

5 YEAR LIMITED WARRANTY

Subject to the "Exclusions" set forth below, Fluidmaster Inc. promises to the consumer to repair, or at the option of Fluidmaster Inc. to replace any part of this plumbing product which proves to be defective in workmanship or materials under normal use for five years from the date of purchase. All costs of removal, transportation and reinstallation to obtain warranty service shall be paid by the consumer. During this "Limited Five Year Express Warranty," Fluidmaster Inc. will provide, subject to the "Exclusions" section set forth below, all replacement parts free of charge, necessary to correct such defects. This "Limited Five Year Warranty" is null and void if this plumbing product has not been installed and maintained in accordance with all written instructions accompanying the product, and if non-Fluidmaster Inc. parts are used in installation.

EXCLUSIONS: FLUIDMASTER INC. SHALL NOT BE LIABLE FOR INCIDENTAL OR CONSEQUENTIAL DAMAGES, INCLUDING COSTS OF INSTALLATION, WATER DAMAGE, PERSONAL INJURY OR FOR ANY DAMAGES RESULTING FROM ABUSE OR MISUSE OF THE PRODUCT, FROM OVERTIGHTENING OR FROM FAILURE TO INSTALL OR MAINTAIN THIS PLUMBING PRODUCT IN ACCORDANCE WITH THE WRITTEN INSTRUCTIONS, INCLUDING USE OF NON-FLUIDMASTER PARTS. DO NOT USE IN-TANK DROP-IN TOILET BOWL CLEANERS CONTAINING BLEACH OR CHLORINE. USE OF SUCH PRODUCTS WILL RESULT IN DAMAGE TO TANK COMPONENTS AND MAY CAUSE FLOODING AND PROPERTY DAMAGE. USE OF SUCH PRODUCTS WILL VOID THIS WARRANTY.