



A Regal Brand

Catalog # : 096001.00
Product Type: ACSG
Description:

Model: 096001.00
Stock: Y

Engineering Data

RPM	9/8	Volts	110/220	Volts	
HP/KW	.08/.08	F.L. Amps	1.6/.8	F.L. Amps	1.3/.65
Frame	L42Y	S. F Amps		S. F Amps	
Max Amb	40	Hertz		Phase	1
Insul Class	F4	Duty	CONT	TYPE	PN
		Serv. Factor	1.0/1.0	PF	
Eff 100%		Eff 75%		Enclosure	TENV
Protection	NOT	Therm.Prot.		Bearing OPE	6201-13
Design		Code	G	Bearing PE	6203
UL	Yes	CSA	Yes	CE	No
Series	PE350	Nameplate	080573	Lubrication	
		Overrlung Ld.	491	Shaft Type	PARALLEL

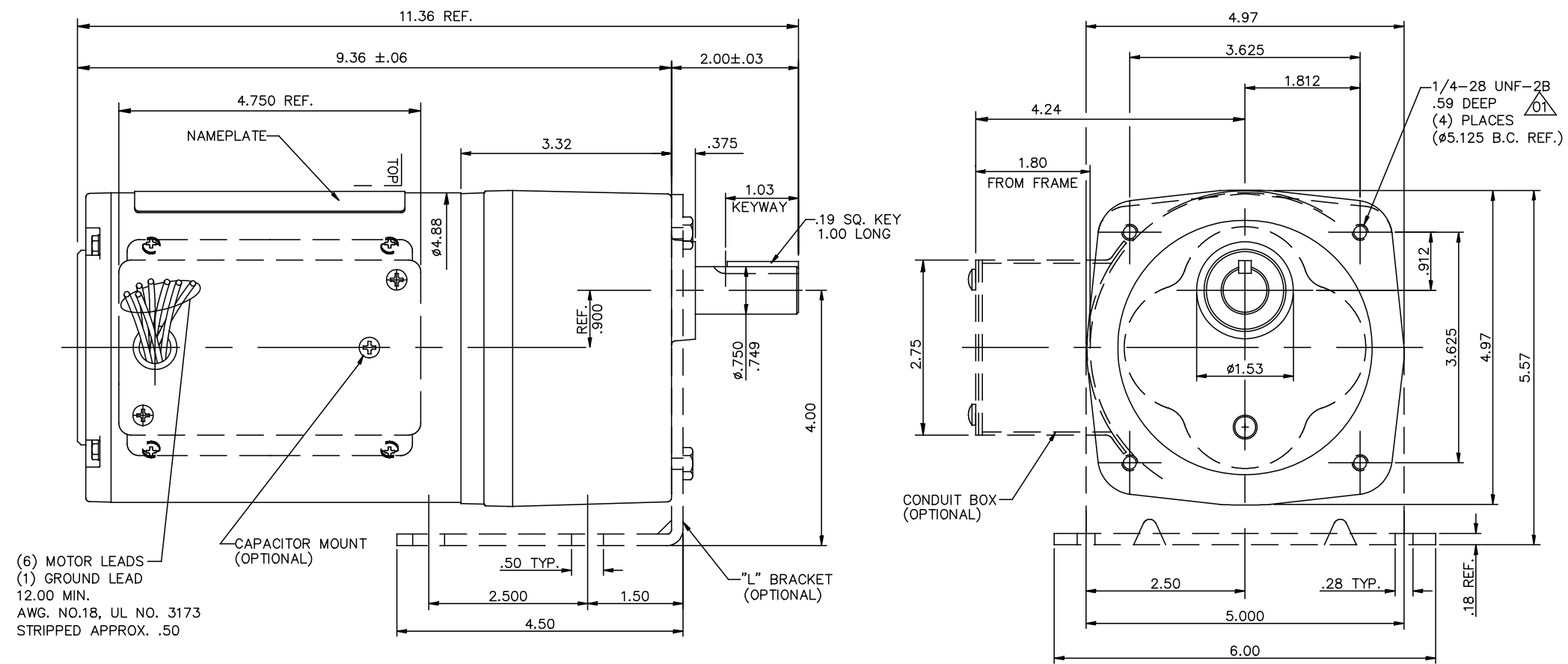
Motor Wt.	24 LB	Mounting	SPECIAL	Rotation	RECONN
Carton Label	Leeson GearMotor	Assembly			
Winding	P47411	Shaft Dia.	3/4	Ext. Diag2.	
GROUP :	3 B	Paint	M1305027.01	Packaging	B
Test Card	01	Outline	027690-096001	Cust Part No	

Form Factor		RMS Amps	
Torque		Peak	
AB Code		Peak@DegC	
Resistance			
Connection		Const Torque	

Rework Status Rework TYPE

4Explosion Proof		2Brake Motors
Temp Op Code		FORCE
Class	GROUP	VDC
Class	GROUP	ADC

027690

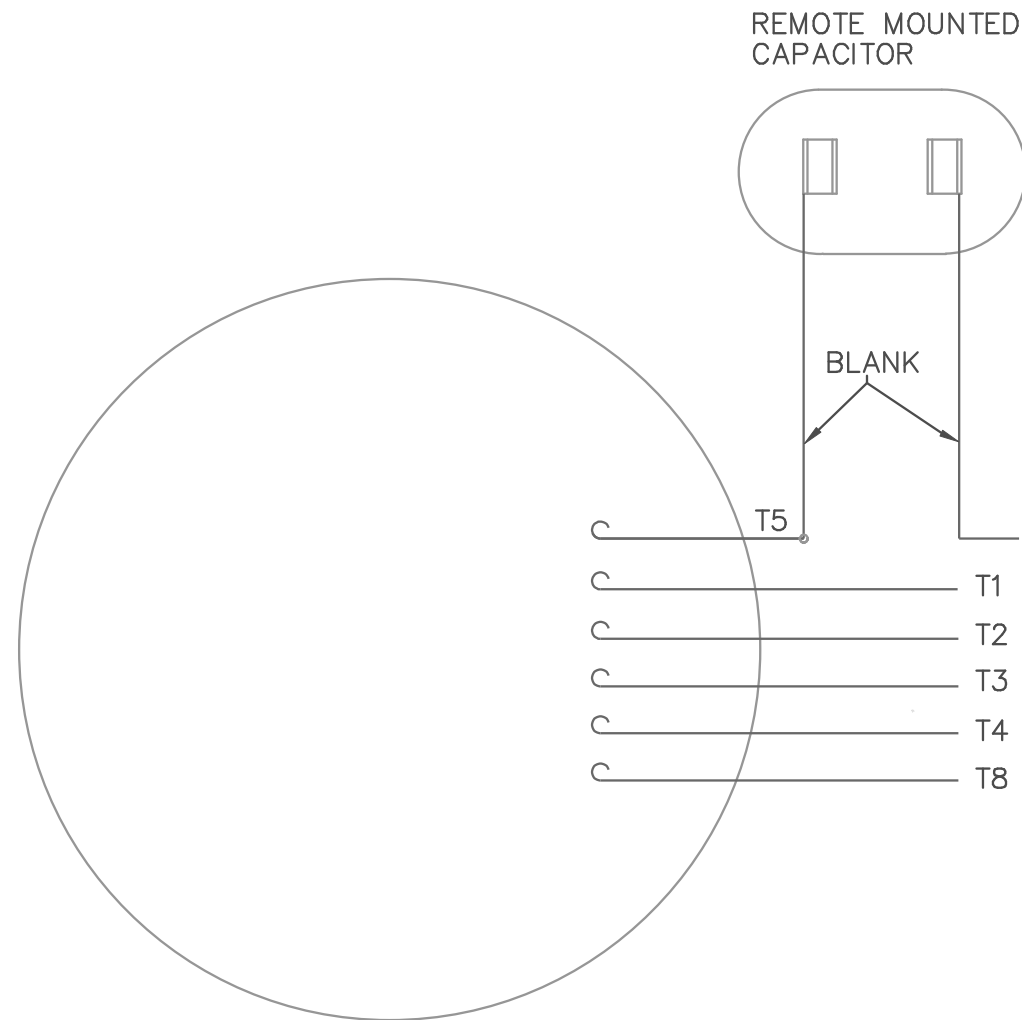


CATALOG NUMBER	OUTPUT RPM	FULL LOAD TORQUE LB.-IN.	INPUT HP	OVERHUNG LOAD LBS.	RATIO TO 1
096000.00	5	310	1/12	565	336
096001.00	9	341	1/12	491	180
096002.00	14	280	1/12	459	124
096003.00	19	250	1/12	374	91

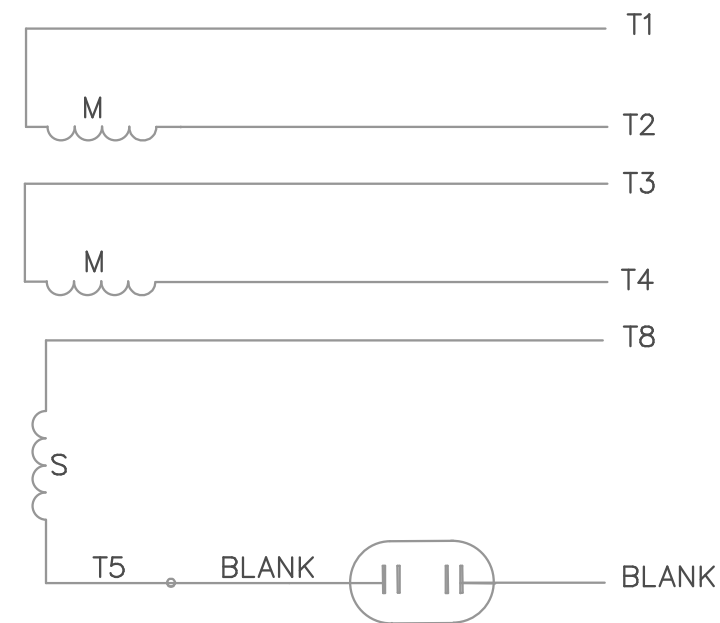
				TOLERANCES UNLESS OTHERWISE SPECIFIED		LEESON ELECTRIC CORPORATION			
				DECIMALS		DRAWN DWF 7/14/97 TITLE OUTLINE DRAWING			
				.00	± .01	CH'K'D.		42 FRAME PE350 STOCK	
				.000	± .005	APPR.		MAT'L.	
				.0000	± .0005	SCALE 1=1.5			
NO.	REVISION	BY	DATE	FRACTIONS	± 1/64	REF.	027689	FINISH LEESON STOCK	
				ANGLES	± 1/2'	FMF	096000.00	SIZE B	
				INCH/MM				DRAWING NO. 027690	
01	THREAD DEPTH WAS .63"	JD	06/06/17						
THIS DRAWING IN DESIGN AND DETAIL IS OUR PROPERTY AND MUST NOT BE USED EXCEPT IN CONNECTION WITH OUR WORK ALL RIGHTS OF DESIGN AND INVENTION ARE RESERVED									

005108-05

VIEW FROM OUTSIDE OF MOTOR AT LEAD END.

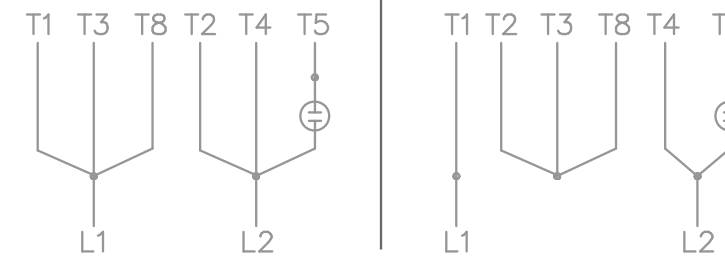


LINE LEADS



LOW VOLTAGE

HIGH VOLTAGE



2 STAGE:
C.C.W. ROTATION FACING LEAD END AS SHOWN
INTERCHANGE LEADS T5 & T8 FOR C.W.
3 STAGE:
CW ROTATION FACING LEAD END AS SHOWN
INTERCHANGE LEADS T5 & T8 FOR CCW

				TOLERANCES UNLESS OTHERWISE SPECIFIED		LEESON ELECTRIC CORPORATION			
				DECIMALS					
				.00	± .01	DRAWN DBT 07/21/97	TITLE EXTERNAL WIRING DIAGRAM TYPE "P" W/O PROTECTOR		
				.000	± .005	CH'K'D.	MAT'L. TAG - 080689.02 - 2 STAGE TAG - 080689.01 - 3 STAGE		
				.0000	± .0005	APPR.			
NO.	REVISION	BY	DATE	FRACTIONS	± 1/64	SCALE 1=1			
THIS DRAWING IN DESIGN AND DETAIL IS OUR PROPERTY AND MUST NOT BE USED EXCEPT IN CONNECTION WITH OUR WORK ALL RIGHTS OF DESIGN AND INVENTION ARE RESERVED				ANGLES	± 1/2°	REF. 005018-01	FINISH LEESON	SIZE A	DRAWING NO.
				INCH/MM		FMF	GEARMOTORS		005108-05