



A Regal Brand

Catalog # : 096005.00  
Product Type: ACSG  
Description:

Model: 096005.00  
Stock: Y

Engineering Data

RPM	34/28	Volts	110/220	Volts	
HP/KW	.16/.16	F.L. Amps	4/2	F.L. Amps	2.9/1.45
Frame	P42Y	S. F Amps		S. F Amps	
Max Amb	40	Hertz		Phase	1
Insul Class	F4	Duty	CONT	TYPE	PF
		Serv. Factor	1.0/1.0	PF	66.9&552
Eff 100%		Eff 75%		Enclosure	TEFC
Protection	NOT	Therm.Prot.		Bearing OPE	6201-13
Design		Code	H	Bearing PE	6203
UL	Yes	CSA	Yes	CE	No
Series	PE350	Nameplate	080573	Lubrication	
		Overrlung Ld.	330	Shaft Type	PARALLEL

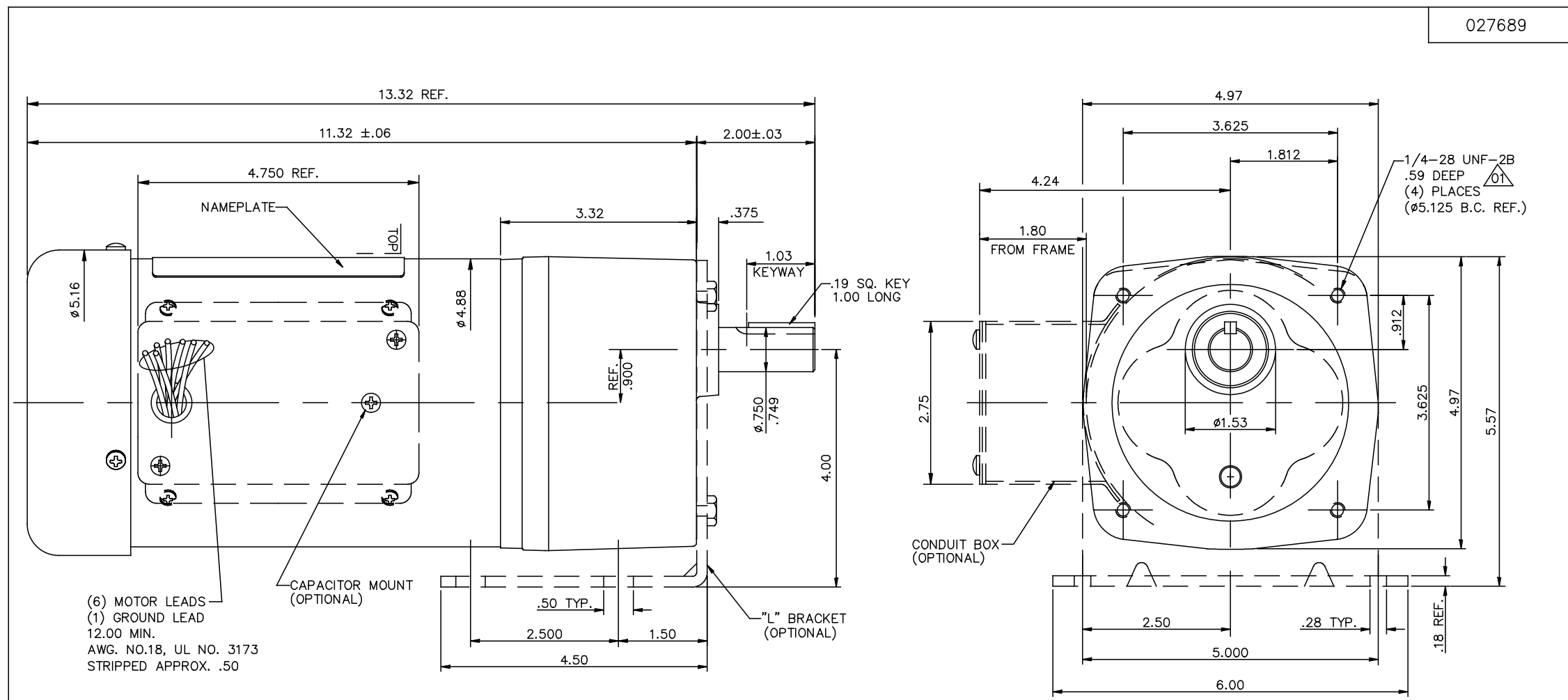
Motor Wt.	29 LB	Mounting	SPECIAL	Rotation	RECONN
Carton Label	Leeson GearMotor	Assembly			
Winding	P47410	Shaft Dia.	3/4	Ext. Diag2.	
GROUP :	3 B	Paint	M1305027.01	Packaging	B
Test Card	01	Outline	027689-096005	Cust Part No	

Form Factor		RMS Amps	
Torque		Peak	
AB Code		Peak@DegC	
Resistance			
Connection		Const Torque	

Rework Status                      Rework TYPE

4Explosion Proof		2Brake Motors
Temp Op Code		FORCE
Class	GROUP	VDC
Class	GROUP	ADC

027689



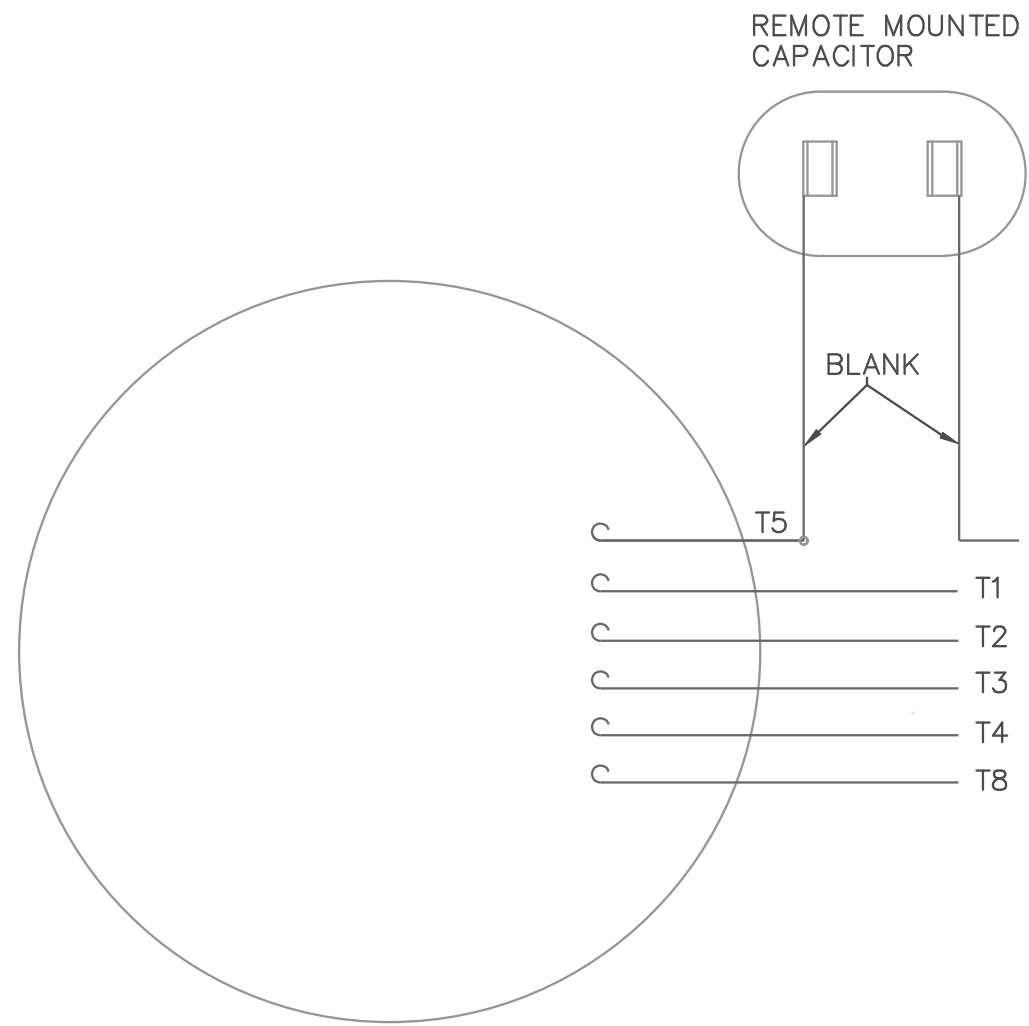
CATALOG NUMBER	OUTPUT RPM	FULL LOAD TORQUE LB.-IN.	INPUT HP	OVERHUNG LOAD LBS.	RATIO TO 1
096004.00	29	270	1/6	327	58
096005.00	34	250	1/6	330	50
096006.00	40	180	1/6	303	43
096007.00	59	135	1/6	267	29
096008.00	75	90	1/6	256	23
096009.00	113	68	1/6	222	15
096010.00	160	45	1/6	196	10
096011.00	340	25	1/6	190	5

				TOLERANCES UNLESS OTHERWISE SPECIFIED		<b>LEESON ELECTRIC CORPORATION</b>			
				DECIMALS		DRAWN DWF 7/14/97 TITLE OUTLINE DRAWING			
				.00 ± .01		CH'K'D. 42 FRAME PE350 STOCK			
				.000 ± .005		APPR. MAT'L.			
01 THREAD DEPTH WAS .63"				JD	06/06/17	.0000 ± .0005		SCALE 1=1.5	
NO. REVISION				BY	DATE	FRACTIONS ± 1/64		REF. PR970359	
						ANGLES ± 1/2'		FINISH LEESON	
						INCH/MM		STOCK	
						FMF 092141.00		SIZE B	
								DRAWING NO. 027689	

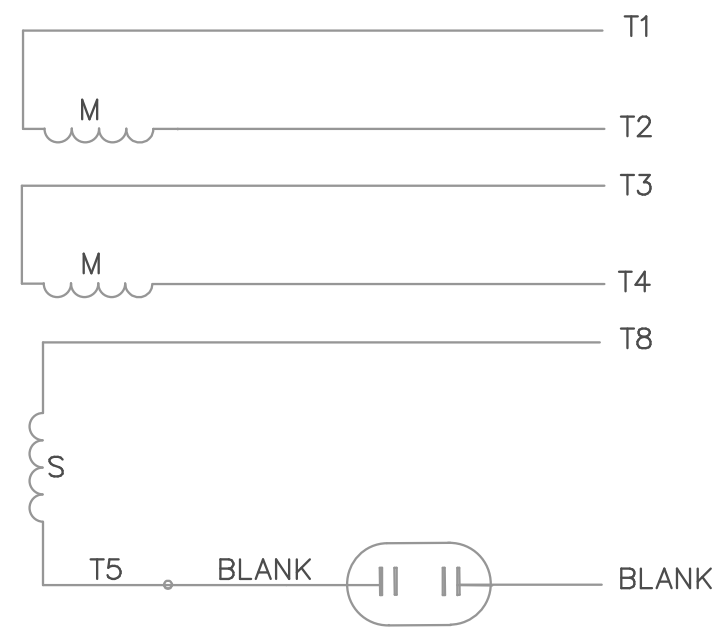
THIS DRAWING IN DESIGN AND DETAIL IS OUR PROPERTY AND MUST NOT BE USED EXCEPT IN CONNECTION WITH OUR WORK ALL RIGHTS OF DESIGN AND INVENTION ARE RESERVED

005108-05

VIEW FROM OUTSIDE OF MOTOR AT LEAD END.

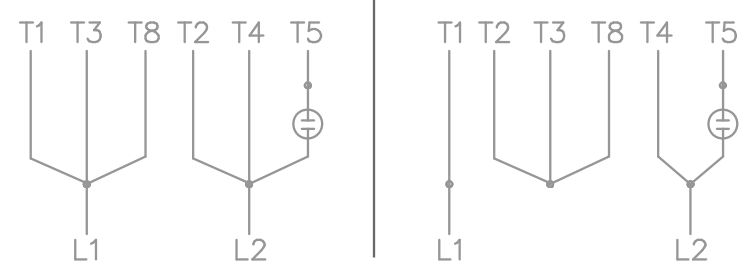


LINE LEADS



LOW VOLTAGE

HIGH VOLTAGE



2 STAGE:  
C.C.W. ROTATION FACING LEAD END AS SHOWN  
INTERCHANGE LEADS T5 & T8 FOR C.W.

3 STAGE:  
CW ROTATION FACING LEAD END AS SHOWN  
INTERCHANGE LEADS T5 & T8 FOR CCW

				TOLERANCES UNLESS OTHERWISE SPECIFIED		<b>LEESON</b> ELECTRIC CORPORATION					
				DECIMALS							
				.00	± .01	DRAWN DBT	07/21/97	TITLE		EXTERNAL WIRING DIAGRAM	
				.000	± .005	CH'K'D.		TYPE "P" W/O PROTECTOR			
				.0000	± .0005	APPR.		MAT'L.		TAG - 080689.02 - 2 STAGE	
NO.	REVISION	BY	DATE	FRACTIONS	± 1/64	SCALE	1=1			TAG - 080689.01 - 3 STAGE	
THIS DRAWING IN DESIGN AND DETAIL IS OUR PROPERTY AND MUST NOT BE USED EXCEPT IN CONNECTION WITH OUR WORK ALL RIGHTS OF DESIGN AND INVENTION ARE RESERVED				ANGLES	± 1/2°	REF.	005018-01	FINISH	LEESON	SIZE	DRAWING NO.
				INCH/MM		FMF		GEARMOTORS	A	005108-05	