



**Thermo Scientific
Dry Baths / Block Heaters**

reproducible results
you can trust

Thermo
SCIENTIFIC

Thermo Scientific Dry Baths / Block Heaters

Reliability you can depend on. Thermo Scientific™ versatile dry baths / block heaters offer a wide range of blocks to accommodate various tubes.

Available with digital or touch screen controls, **our units provide outstanding temperature uniformity and stability** that help create the reproducible results that you need.



Digital Dry Bath /
Block Heater pg 3



Touch Screen Dry Bath /
Block Heater pg 4



Compact Dry Bath /
Block Heater pg 6

Thermo Scientific Digital Dry Bath / Block Heater

Increase lab versatility with the Thermo Scientific digital dry baths / block heaters, which offer a range of configurations with interchangeable modular blocks for a variety application needs.



Range of configuration to hold 1, 2 and 4 interchangeable modular blocks to accommodate a variety of vessels and applications



FEATURES

- Digital controls and display of time and temperature
- Built-in temperature sensing probe for outstanding temperature accuracy and control
- Precise temperature control with PID circuit
- Temperature calibration enables to offset the temperature to desired value
- Timer allows the user to accurately monitor the heating time
- Interchangeable aluminum alloy sample blocks provide versatility and allow for easy cleaning and disinfecting
- Powder-coated steel body construction ensures durability

APPLICATIONS

- | | |
|----------------------------|----------------------------------|
| Sample preparation | Electrophoresis gel degeneration |
| Enzyme preservation | Serum coagulation |
| Enzyme-substrate reactions | |
| DNA amplification | |

Thermo Scientific Digital Dry Baths / Block Heaters Ordering Information and Specifications*

| Cat No. | 88870001 | 88870004 | 88870002 | 88870005 | 88870003 | 88870006 |
|--------------------------------------|---|---|---|---|---|---|
| Voltage/Hz | 100-120V 50/60Hz | 200-240V 50/60Hz | 100-120V 50/60Hz | 200-240V 50/60Hz | 100-120V 50/60Hz | 200-240V 50/60Hz |
| Plugs | | | | | | |
| Block Capacity | 1 | | 2 | | 4 | |
| Controller Type | PID digital | | | | | |
| Temperature Range | Ambient + 5°C – 130°C (Ambient at 25°C) | | | | | |
| Temperature Control Accuracy at 37°C | ≤ ± 0.5°C | | | | | |
| Temperature Uniformity at 37°C | ≤ ± 1°C | | | | | |
| Timer Range | 0-99:59 min or continuous | | | | | |
| Heating Up Time | ≤ 20 min 30°C to 130°C | | | | ≤ 25 min 30°C to 130°C | |
| Relative Humidity Tolerance | ≤ 80% | | | | | |
| Dimensions L x W x H | 288 × 200 × 100 mm 11.3 x 7.9 x 3.9 in | | 318 × 200 × 100 mm 12.5 x 7.9 x 3.9 in | | 450 × 200 × 100 mm 17.7 x 7.9 x 3.9 in | |
| Weight | 2.9 kg 6.39 lbs. | | 3.3 kg 7.28 lbs. | | 4.7 kg 10.36 lbs. | |
| Fuse Protector ø5×20 | 250V 2.5A | | 250V 5A | 250V 2.5A | 250V 8A | 250V 3.15A |
| Shipment Includes: | Dry bath, US style plug, block lifter | Dry bath, CN, EU & UK plugs, block lifter | Dry bath, US style plug, block lifter | Dry bath, CN, EU & UK plugs, block lifter | Dry bath, US style plug, block lifter | Dry bath, CN, EU & UK plugs, block lifter |
| Required Accessories | 1 block | | 2 blocks | | 4 blocks | |
| Certification | CE cULus RoHS | | | | | |
| Warranty | 2 years | | | | | |

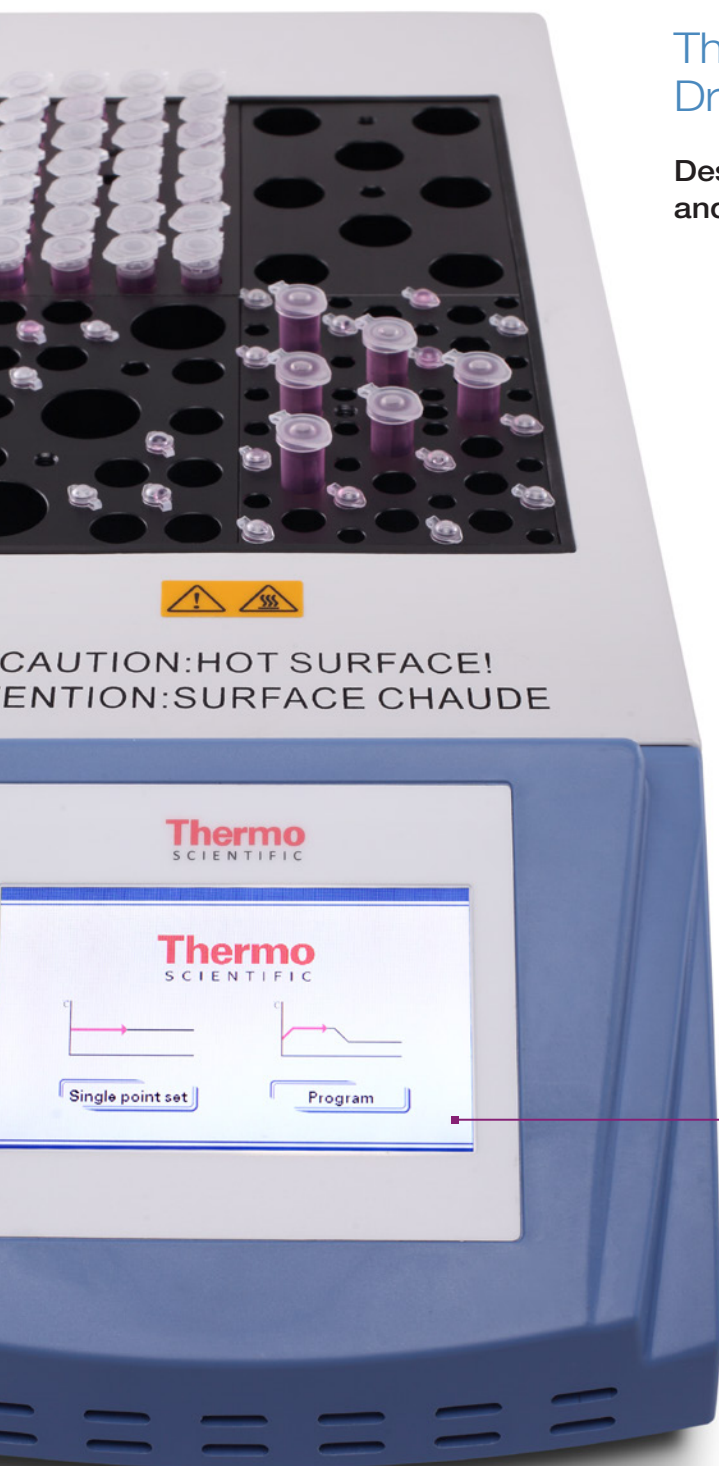
*UNIT MUST BE ORDERED WITH A BLOCK — see page 7 for ordering information

Thermo Scientific Touch Screen Dry Bath / Block Heater

Designed to achieve precise temperature stability and uniformity with an easy-to-use touch screen.

FEATURES

- Built-in temperature sensing probe designed for outstanding temperature accuracy and control
- Temperature deviation adjustment
- Precise temperature control with PID circuit
- Temperature calibration enables to offset the temperature to desired value
- Timer enables the user to accurately monitor the heating time
- Interchangeable aluminum alloy sample blocks designed to provide versatility, easy cleaning and disinfecting
- Range of configuration to hold 1, 2 and 4 interchangeable modular blocks to accommodate a variety of vessels and applications
- Powder-coated steel body construction ensures durability
- When the external temperature sensor is connected, the internal temperature sensor will disconnect automatically, allowing the temperature control and display to rely on the external temperature sensor



Easy-to-use touch screen control displays time and temperature

10 user setting programs, each supports up to 5 sequential steps of different temperatures and duration times

Built in over-temperature protection device is designed to provide reliable operation

APPLICATIONS

Sample preparation
Enzyme preservation
Enzyme-substrate reactions

DNA amplification
Electrophoresis gel degeneration
Serum coagulation

Thermo Scientific Touch Screen Dry Baths / Block Heaters

Ordering Information and Specifications*



Optional PT 1000
temperature probe



| Cat No. | 88870007 | 88870010 | 88870008 | 88870011 | 88870009 | 88870012 |
|--------------------------------------|---|---|---|---|---|--|
| Voltage/Hz | 100-120V 50/60Hz | 200-240V 50/60Hz | 100-120V 50/60Hz | 200-240V 50/60Hz | 100-120V 50/60Hz | 200-240V 50/60Hz |
| Plugs | | | | | | |
| Block Capacity | 1 | | 2 | | 4 | |
| Controller Type | PID Digital | | | | | |
| Temperature Range | Ambient + 5°C – 130°C (Ambient at 25°C) | | | | | |
| Temperature Control Accuracy at 37°C | ≤ ± 0.5°C | | | | | |
| Temperature Uniformity at 37°C | ≤ ± 1°C | | | | | |
| Timer Range | 0-99:59 min or continuous | | | | | |
| Heating Up Time | ≤ 20 min 30°C to 130°C | | | | ≤ 25 min 30°C to 130°C | |
| Relative Humidity Tolerance | ≤ 80% | | | | | |
| Dimensions L x W x H | 373 × 200 × 100 mm 14.7 x 7.9 x 3.9 in | | 403 × 200 × 100 mm 15.9 x 7.9 x 3.9 in | | 535 × 200 × 100 mm 21.1 x 7.9 x 3.9 in | |
| Weight | 3.4 kg 7.5 lbs. | | 3.7 kg 8.16 lbs. | | 5.1 kg 11.24 lbs. | |
| Fuse Protector ø5×20 | 250V 2.5A | | 250V 5A | 250V 2.5A | 250V 8A | 250V 3.15A |
| Shipment Includes: | Dry bath, US style plug, block lifter | Dry bath, CN, EU & UK plugs, block lifter | Dry bath, US style plug, block lifter | Dry bath, CN, EU & UK plugs, block lifter | Dry bath, US style plug, block lifter | Dry bath, CN, EU & UK plugs, block lifter |
| Required Accessories | 1 block | | 2 blocks | | 4 blocks | |
| Certification | CE cULus RoHS | | | | | |
| Warranty | 2 years | | | | | |

*UNIT MUST BE ORDERED WITH A BLOCK — see page 7 for ordering information



Digital temperature controls and display



Small footprint and lightweight

Thermo Scientific Compact Dry Bath / Block Heater

Maximize valuable bench space with our compact, light weight dry bath / block heater, available with multiple combinations of block sizes for tube size versatility.

FEATURES

- Built-in temperature-sensing probe assists with outstanding temperature accuracy and control
- Designed for precise temperature control
- Fast heating rate
- Multiple combination of different size of blocks allows for maximum tube size versatility during experimental procedure
- 12V low voltage power input

APPLICATIONS

Sample preparation
Enzyme preservation
Enzyme-substrate reactions
DNA amplification

Thermo Scientific Compact Dry Bath / Block Heater

Ordering Information and Specifications*

| Cat No. | 88871001 | 88871003 | 88871002 | 88871004 |
|--|--|--|--|--|
| Plugs | | | | |
| Name | Compact Dry Bath S | | Compact Dry Bath D | |
| Voltage | 100 - 240V | | | |
| Temperature Range | Ambient + 2°C – 100°C (Ambient at 25°C) | | | |
| Temperature Control Accuracy at 37°C | ± 0.5°C | | | |
| Temperature Uniformity at 37°C | ± 0.5°C | | | |
| Average Heating Rate (30°C to 100°C, Ambient at 25°C, with one 0.2 ml block) | 16 minutes | | 20 minutes | |
| Dimensions L x W x H | 185 x 185 x 25 mm 7.3 x 7.3 x 1 in | | 200 x 200 x 25 mm 7.9 x 7.9 x 1 in | |
| Weight | <1 kg 2.2 lbs. (without blocks) | | <1.5 kg 3.3 lbs. (without blocks) | |
| Power | 12V DC, 5A | | 12V DC, 7A | |
| Shipment Includes: | Dry bath, US style plug, block lifter, plastic lid | Dry bath, CH, EU & UK style plugs, block lifter, plastic lid | Dry bath, US style plug, block lifter, plastic lid | Dry bath, CH, EU & UK style plugs, block lifter, plastic lid |
| Required Accessories | Full, half or quarter blocks (see page 7) | | | |
| Certification | CE cTUVus RoHS | | | |
| Warranty | 2 years | | | |

*UNIT MUST BE ORDERED WITH A TUBE BLOCK — see page 7 for ordering information

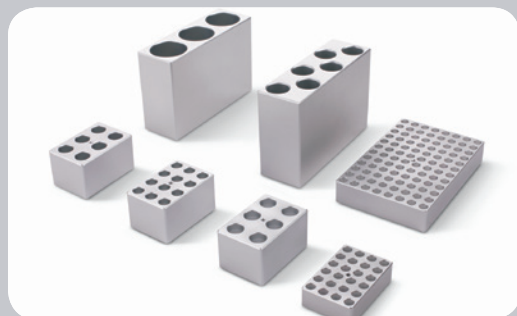
ACCESSORIES Thermo Scientific Digital and Touch Screen Dry Baths / Block Heaters

| | Cat. No. | Description | Max Tubes | Block Dimensions WxDxH (mm / in) | | Cat. No. | Description | Max Tubes | Block Dimensions WxDxH (mm / in) |
|--|----------|-------------------------|-----------|----------------------------------|---|----------|---|------------|-----------------------------------|
|  | 88870101 | 46 x ø6 mm block | 46 | 124 x 76 x 39 / 4.9 x 3.0 x 1.5 |  | 88870112 | Mixed block 32 x ø6 mm + 21 x ø10 mm | 32 + 21 | 124 x 76 x 39 / 4.9 x 3.0 x 1.5 |
|  | 88870102 | 28 x ø10 mm block | 28 | 124 x 76 x 39 / 4.9 x 3.0 x 1.5 |  | 88870113 | Mixed block 18 x 1.5 ml + 10 x 2.0 ml | 18 + 10 | 124 x 76 x 39 / 4.9 x 3.0 x 1.5 |
|  | 88870103 | 28 x 1.5 ml block | 28 | 124 x 76 x 39 / 4.9 x 3.0 x 1.5 |  | 88870114 | Mixed block 3 x ø25 mm+ 12 x ø12~13 mm+ 6 x ø6 mm | 3 + 12 + 6 | 124 x 76 x 39 / 4.9 x 3.0 x 1.5 |
|  | 88870104 | 28 x 2.0 ml block | 28 | 124 x 76 x 39 / 4.9 x 3.0 x 1.5 |  | 88870115 | Mixed block 30 x 0.5 ml + 20 x 0.2 ml | 30 + 20 | 124 x 76 x 39 / 4.9 x 3.0 x 1.5 |
|  | 88870105 | 24 x ø13 mm block | 24 | 124 x 76 x 39 / 4.9 x 3.0 x 1.5 |  | 88870116 | Flat bottom, 15 x 15 ml block | 15 | 124 x 76 x 113 / 4.9 x 3.0 x 4.55 |
|  | 88870106 | 15 x ø16 mm block | 15 | 124 x 76 x 39 / 4.9 x 3.0 x 1.5 |  | 88870117 | Flat bottom, 4 x 50 ml block | 4 | 124 x 76 x 113 / 4.9 x 3.0 x 4.55 |
|  | 88870107 | 12 x ø18 mm block | 12 | 124 x 76 x 39 / 4.9 x 3.0 x 1.5 |  | 88870118 | Conical bottom, 15 x 15 ml block | 15 | 124 x 76 x 113 / 4.9 x 3.0 x 4.55 |
|  | 88870108 | 8 x ø20 mm block | 8 | 124 x 76 x 39 / 4.9 x 3.0 x 1.5 |  | 88870119 | Conical bottom, 4 x 50 ml block | 4 | 124 x 76 x 113 / 4.9 x 3.0 x 4.55 |
|  | 88870109 | 6 x ø25 mm block | 6 | 124 x 76 x 39 / 4.9 x 3.0 x 1.5 |  | 88870120 | 1 x 96*0.2 ml non-skirted PCR plate block | 96 | 124 x 76 x 39 / 4.9 x 3.0 x 1.5 |
|  | 88870110 | 40 x 0.5 ml block | 40 | 124 x 76 x 39 / 4.9 x 3.0 x 1.5 |  | 88870121 | 1 x 96*0.2 ml, half or full skirted PCR plate block | 96 | 124 x 76 x 55 / 4.9 x 3.0 x 2.17 |
|  | 88870111 | 1 x 96-well Elisa block | 96 | 124 x 76 x 39 / 4.9 x 3.0 x 1.5 |  | 88870122 | Temperature probe, PT1000, stainless steel | N/A | N/A |

ACCESSORIES

Thermo Scientific Compact Dry Bath / Block Heater

| Cat. No. | Description | Max Tubes | Dimensions WxDxH (mm / in) |
|----------|--------------------------------|-----------|----------------------------------|
| 88871101 | 0.2 ml 1/4 block | 24 | 54 x 36 x 15 / 2.1 x 1.4 x 0.6 |
| 88871102 | 0.5 ml 1/4 block | 12 | 54 x 36 x 30 / 2.1 x 1.4 x 1.2 |
| 88871103 | 1.5 ml 1/4 block | 6 | 54 x 36 x 30 / 2.1 x 1.4 x 1.2 |
| 88871104 | 2.0 ml 1/4 block | 6 | 54 x 36 x 30 / 2.1 x 1.4 x 1.2 |
| 88871105 | 15 ml 1/2 block | 6 | 108 x 36 x 72 / 4.3 x 1.4 x 2.8 |
| 88871106 | 50 ml 1/2 block | 3 | 108 x 36 x 72 / 4.3 x 1.4 x 2.8 |
| 88871107 | 96-well/flat bottom full block | 96 | 108 x 72 x 18 / 4.3 x 2.8 x 0.7 |
| 88871108 | Heat insulator for Compact S | N/A | 143 x 107 x 80 / 5.6 x 4.2 x 3.2 |
| 88871109 | Heat insulator for Compact D | N/A | 179 x 143 x 80 / 7.0 x 5.6 x 3.2 |
| 88871110 | Plastic lid for Compact S | N/A | 122 x 86 x 40 / 4.8 x 3.4 x 1.6 |
| 88871111 | Plastic lid for Compact D | N/A | 158 x 122 x 30 / 6.2 x 4.8 x 1.2 |





thermoscientific.com

© 2015 Thermo Fisher Scientific Inc. All rights reserved. All trademarks are the property of Thermo Fisher Scientific Inc. and its subsidiaries. Specifications, terms and pricing are subject to change. Not all products are available in all countries. Please consult your local sales representative for details.

Australia +61 39757 4300
Austria +43 1 801 40 0
Belgium +32 53 73 42 41
China +800 810 5118 or
+400 650 5118
France +33 2 2803 2180
Germany national toll free 0800 1 536 376
Germany international +49 6184 90 6000

India toll free 1800 22 8374
India +91 22 6716 2200
Italy +39 02 95059 552
Japan +81 3 5826 1616
Netherlands +31 76 579 55 55
New Zealand +64 9 980 6700
Nordic/Baltic/CIS countries
+358 9 3291 0200

Russia +7 812 703 42 15
Spain/Portugal +34 93 223 09 18
Switzerland +41 44 454 12 22
UK/Ireland +44 870 609 9203
USA/Canada +1 866 984 3766

Other Asian countries +852 2885 4613
Countries not listed +49 6184 90 6000

Thermo
SCIENTIFIC

A Thermo Fisher Scientific Brand