



4700 W. 160th St.
Cleveland, Ohio 44135
Ph: (800) 321-9532
Fax: (800) 321-9535
www.oatey.com

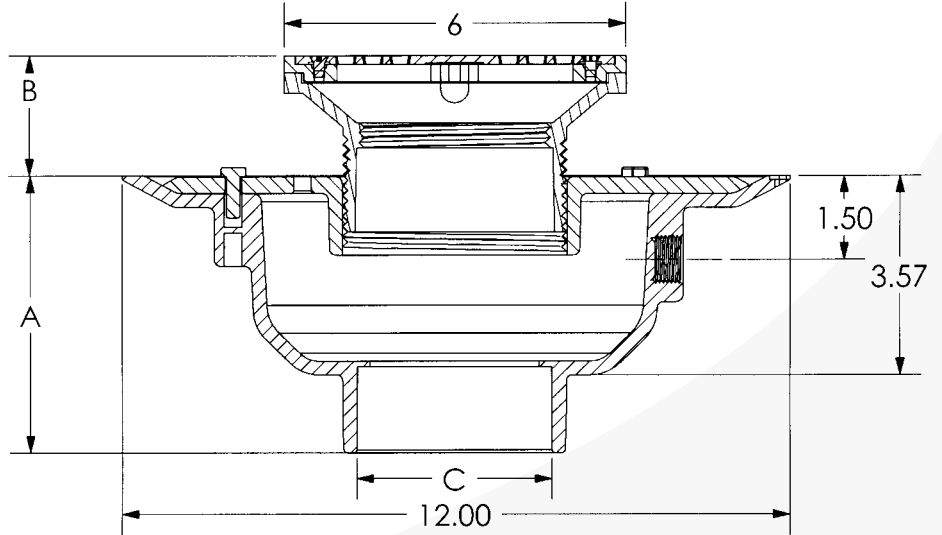
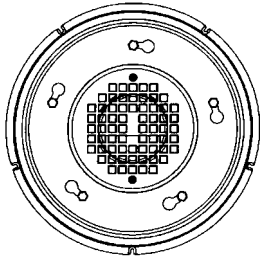
72000 Series PVC Adjustable Commercial Drain PVC Barrel With 6" Round Grate With Round Ring



SUBMITTAL SPECIFICATION

Engineering Specification: Oatey commercial grade floor drains are used for general service in restaurants, restrooms and other commercial applications where traffic is expected. Barrel assembly is completely adjustable to meet the finished floor height.

Job Reference



(All dimensions in inches)

- Barrel diameter is 3-1/2 in. IPS thread.
- Primer tap knock-out is 1/2 in. FIP thread.

✓	Socket Size (C)	Base Material	Grate Finish	Part Number
	2 in.	PVC	Brass	72132
	2 in.	PVC	Nickel	72162
	2 in.	PVC	Chrome	72192
	3 in.	PVC	Brass	72133
	3 in.	PVC	Nickel	72163
	3 in.	PVC	Chrome	72193
	4 in.	PVC	Brass	72134
	4 in.	PVC	Nickel	72164
	4 in.	PVC	Chrome	72194
	6 in.	PVC	Brass	72136
	6 in.	PVC	Nickel	72166
	6 in.	PVC	Chrome	72196

	Dimensional Data		
	A	B	C
2 in.*	5.25 in.	1.25 – 4.00 in.	2 in. Hub
3 in.	5.00 in.	1.25 – 4.00 in.	3 in. Hub
4 in.	5.25 in.	1.25 – 4.00 in.	4 in. Hub
6 in.	6.00 in.	1.25 – 4.00 in.	6 in. Hub

*2 in. base includes 3 in. x 2 in. bushing.

Grate Properties		
Finish	Open Area	Load*
Brass	7.00 in. ²	Medium
Nickel	7.00 in. ²	Medium
Chrome	7.00 in. ²	Medium

*Load is defined by ASME A112.21.1M.
Light Duty – Safe live load under 2000 lbs.
Medium Duty – Safe live load between 2000 lbs. and 4999 lbs.



4700 W. 160th St.
Cleveland, Ohio 44135
Ph: (800) 321-9532
Fax: (800) 321-9535
www.oatey.com

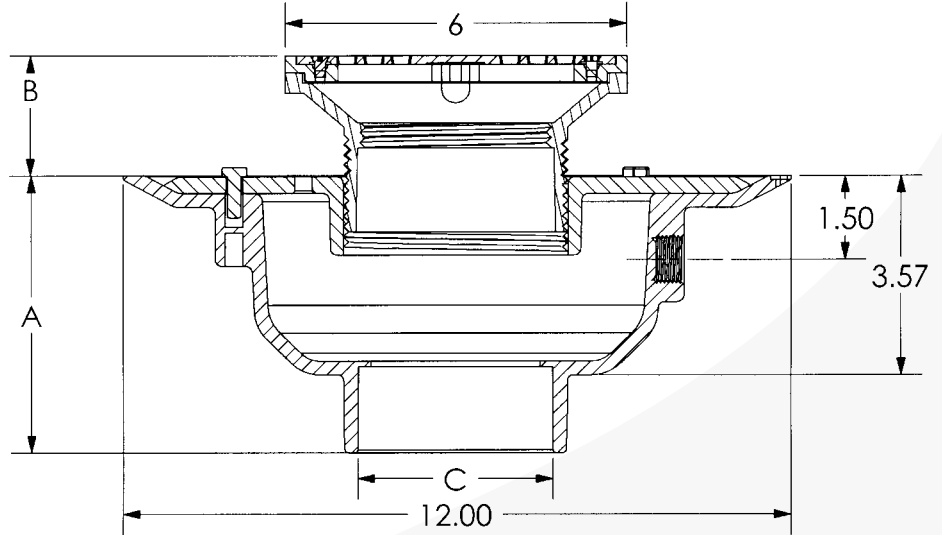
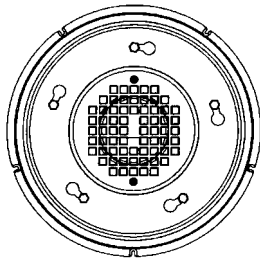
SUBMITTAL SPECIFICATION

**82000 Series
ABS Adjustable Commercial Drain
PVC Barrel With 6" Round Grate With Round Ring**



Engineering Specification: Oatey commercial grade floor drains are used for general service in restaurants, restrooms and other commercial applications where traffic is expected. Barrel assembly is completely adjustable to meet the finished floor height.

Job Reference



(All dimensions in inches)

- Barrel diameter is 3-1/2 in. IPS thread.
- Primer tap knock-out is 1/2 in. FIP thread.

✓	Socket Size (C)	Base Material	Grate Finish	Part Number
	2 in.	ABS	Brass	82132
	2 in.	ABS	Nickel	82162
	2 in.	ABS	Chrome	82192
	3 in.	ABS	Brass	82133
	3 in.	ABS	Nickel	82163
	3 in.	ABS	Chrome	82193
	4 in.	ABS	Brass	82134
	4 in.	ABS	Nickel	82164
	4 in.	ABS	Chrome	82194
	6 in.	ABS	Brass	82136
	6 in.	ABS	Nickel	82166
	6 in.	ABS	Chrome	82196

	Dimensional Data		
	A	B	C
2 in.*	5.25 in.	1.25 – 4.00 in.	2 in. Hub
3 in.	5.00 in.	1.25 – 4.00 in.	3 in. Hub
4 in.	5.25 in.	1.25 – 4.00 in.	4 in. Hub
6 in.	6.00 in.	1.25 – 4.00 in.	6 in. Hub

*2 in. base includes 3 in. x 2 in. bushing.

Grate Properties		
Finish	Open Area	Load*
Brass	7.00 in. ²	Medium
Nickel	7.00 in. ²	Medium
Chrome	7.00 in. ²	Medium

*Load is defined by ASME A112.21.1M.
Light Duty – Safe live load under 2000 lbs.
Medium Duty – Safe live load between 2000 lbs. and 4999 lbs.