

CLIMAGUARD™ AIR-TO-AIR INDOOR


| | | | | | | |
|--|--|---|---|---|---|--|
| XR20 Models 4 W/°F (7 W/°C) | XR29-08 Models 8 W/°F (14 W/°C) | XR29-18 Models 18 W/°F (32 W/°C) | XR47-24 Models 24 W/°F (43 W/°C) | XR47-35 Models 35 W/°F (63 W/°C) | XR60-55 Models 55 W/°F (99 W/°C) | XR60-84 Models 84 W/°F (151 W/°C) |
|--|--|---|---|---|---|--|

INDUSTRY STANDARDS

UL/cUL Listed; Type 12, 3R; File No. SA7402
UR/cUR Recognized

Type 12 on XR20 and XR29-08 models
Type 3R on XR29-18 and larger models when surface mounted vertically on an enclosure
CE
GOST

APPLICATION

- Industrial automation
- Package handling equipment
- Security and defense systems
- And more

FEATURES

- Unique counterflow aluminum core for high-efficiency and high-performance heat transfer, except for the XR20 and XR29-08 which use a modified heat pipe core
- Models for 115 and 230 VAC power input
- UL Listed or Recognized to save customers time and money with agency approvals
- Operating temperature range from -20 F/-29 C to 140 F/60 C
- Streamlined aesthetics with no visible mounting rails; Slim design allows for mounting to narrow or shallow enclosures
- Reliable top-quality bearing fans and impellers make these units run quietly and with increased reliability
- Low-carbon mild-steel sheet-metal cover for rugged factory environments
- Easy-mount flanges for simple installation
- Mounting hardware, gaskets and user manual furnished with the unit
- Every unit functionally tested before shipping
- Filterless design for low maintenance and easy cleaning
- Four fasteners allow simple removal of front cover for easy access

FINISH

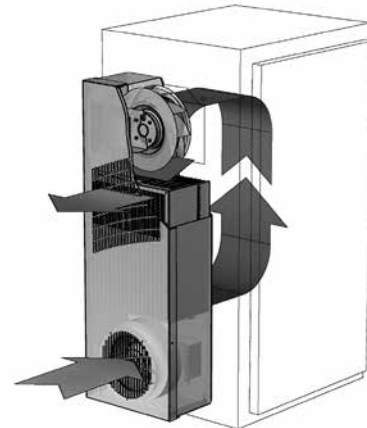
- RAL 7035 light-gray, semi-textured powder-coat paint standard
- Stainless steel Type 304 or 316 finishes available on Type 4X models
- Other colors and textures available

OPTIONS

- Special Voltage Package
 - Outdoor Package*
 - Harsh Environment Package*
 - Stainless Steel Package*
- * CLIMAGUARD™ may be more appropriate. Refer to CLIMAGUARD Air-to-Air Outdoor chapter. Consult the factory for availability and catalog number.

NOTES

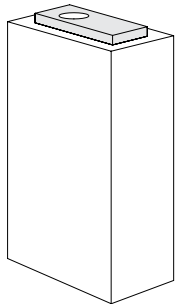
Visit www.hoffmanonline.com to download 2D and 3D CAD drawings into the overall design of your electronic system



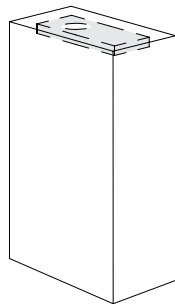
Performance Data **XR20 Models 4 W/°F (7 W/°C)**

| CATALOG NUMBER | | |
|---|---|--------------------------------|
| | XR200416012 | XR200426012 |
| COOLING PERFORMANCE | | |
| Nominal: | | |
| W per °F | 4 | 4 |
| W per °C | 7 | 7 |
| Refrigerant | R-134A | R-134A |
| Refrigerant Charge (ounces/grams) | 4/113 | 4/113 |
| Operating Temperature Range: | | |
| Maximum (°F/°C) | 140/60 | 140/60 |
| Minimum (°F/°C) | -20/-29 | -20/-29 |
| Airflow at 0 Static Pressure: | | |
| Internal loop 50 Hz (CFM / m ³ /hr.) | 71/121 | 71/121 |
| External loop 50 Hz (CFM / m ³ /hr.) | 75/127 | 75/127 |
| Internal loop 60 Hz (CFM / m ³ /hr.) | 74/126 | 74/126 |
| External loop 60 Hz (CFM / m ³ /hr.) | 78/132 | 78/132 |
| ELECTRICAL DATA | | |
| Rated Voltage | 115 | 230 |
| Frequency (Hz) | 50/60 | 50/60 |
| Operating Range | +/- 10% | +/- 10% |
| Max. Power Consumption (W at 50/60 Hz) | 69 | 69 |
| Max. Nominal Current (A at 50/60 Hz) | 0.6 | 0.3 |
| Agency Approvals | cUL Listed CE GOST | |
| Power Input Description | 6-ft. cord with NEMA 5-15 plug | 6-ft. cord with NEMA 6-15 plug |
| ENCLOSURE PROTECTION | | |
| UL Type | Type 12 standard | |
| SOUND LEVEL | | |
| At 1.5 Meters | 56 dBA | |
| UNIT CONSTRUCTION | | |
| Material | Mild steel sheet metal standard Stainless steel optional | |
| Finish | RAL 7035 light-gray, semi-textured powder-coat paint standard | |
| UNIT DIMENSIONS | | |
| Height (in./mm) | 20/508 | 20/508 |
| Width (in./mm) | 7.5/190.5 | 7.5/190.5 |
| Depth (in./mm) | 3/76.2 | 3/76.2 |
| Weight (lb./kg) | 12/5.4 | 12/5.4 |

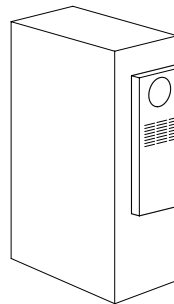
Mounting Options



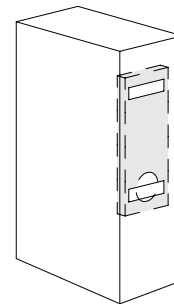
External
Top-Mount



Internal
Top-Mount



External
Vertical-Mount

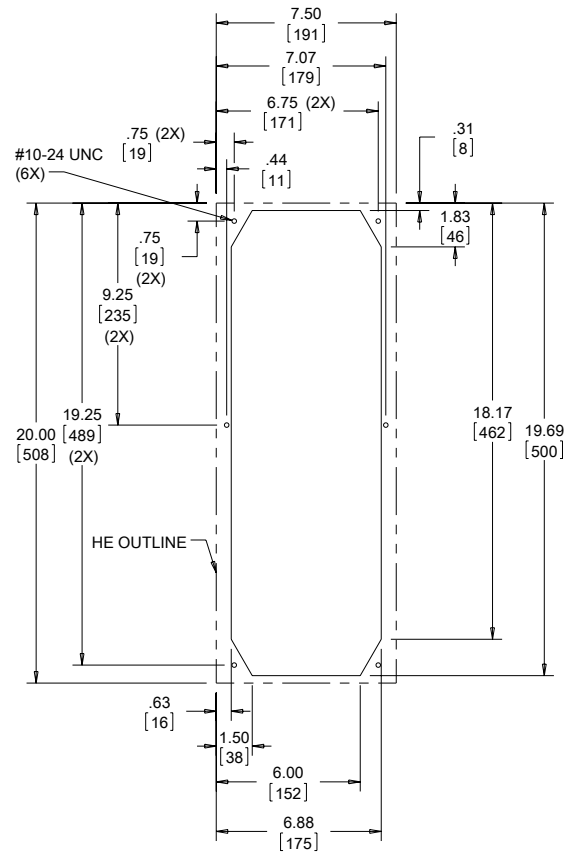
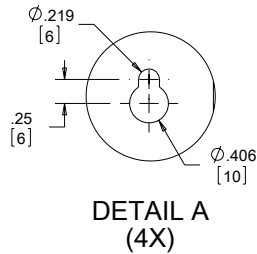
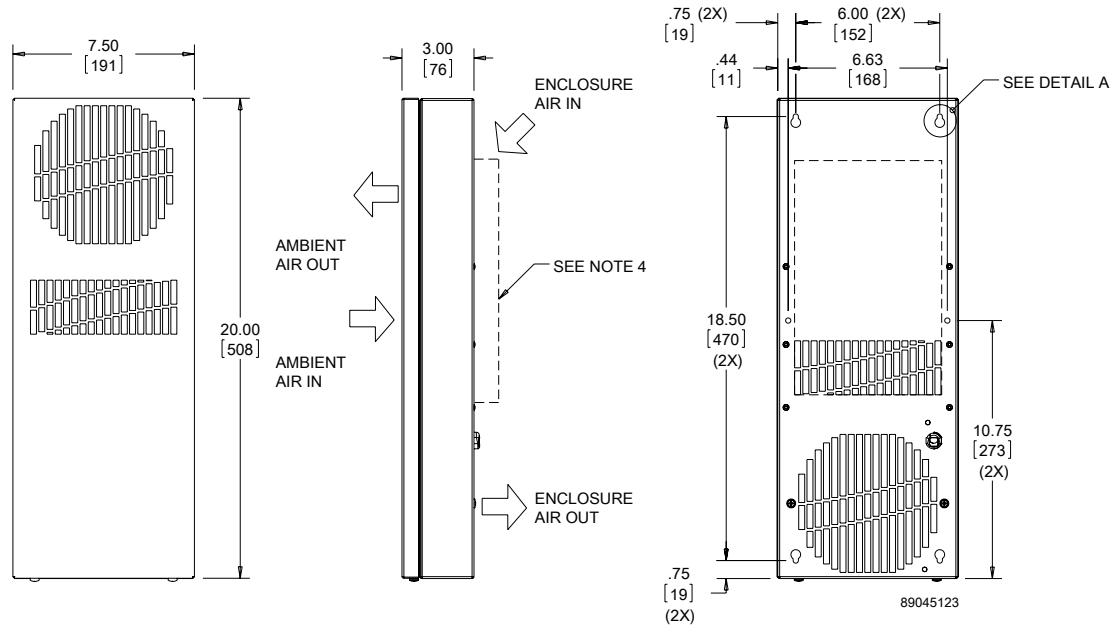


Internal
Vertical-Mount

Note:
Internal
mounting
requires
inverting
the heat
exchanger
as shown.

87569532

XR20 Models 4 W/F (7 W/°C)



Cutout Dimensions

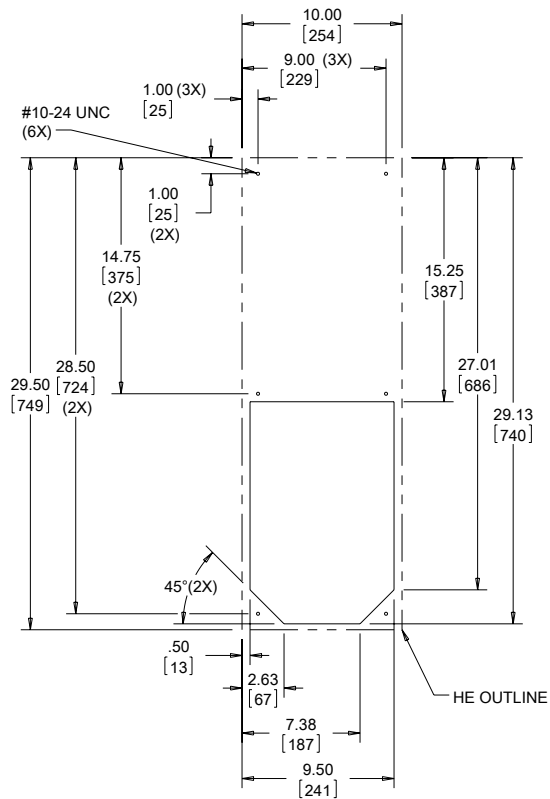
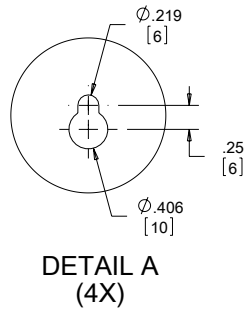
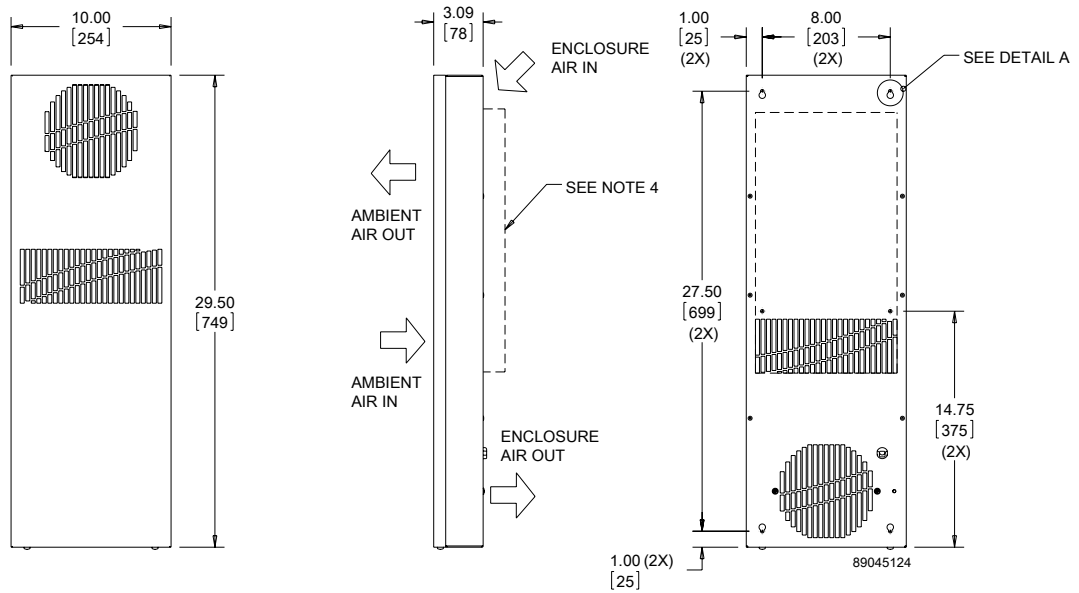
- NOTE:
1. MOUNTING GASKET SUPPLIED (NOT SHOWN)
 2. UNITS: in [mm]
 3. SERVICE CORD TERMINATED WITH APPROPRIATE PLUG:
NEMA 5-15P FOR 115V UNITS
NEMA 6-15P FOR 230V UNITS
 4. DETACHABLE AIRFLOW PLENUM MAY BE USED WHEN MOUNTING THE HEAT EXCHANGER INSIDE OR OUTSIDE OF THE ENCLOSURE

Visit www.HoffmanOnline.com to download 2D and 3D CAD drawings into the overall design of your electronic system.

Performance Data **XR29 Models 8 W/°F (14 W/°C)**

| CATALOG NUMBER | | |
|---|---|--------------------------------|
| | XR290816012 | XR290826012 |
| COOLING PERFORMANCE | | |
| Nominal: | | |
| W per °F | 8 | 8 |
| W per °C | 14 | 14 |
| Refrigerant | R-134A | R-134A |
| Refrigerant Charge (ounces/grams) | 5.5/156 | 5.5/156 |
| Operating Temperature Range: | | |
| Maximum (°F/°C) | 140/60 | 140/60 |
| Minimum (°F/°C) | -20/-29 | -20/-29 |
| Airflow at 0 Static Pressure: | | |
| Internal loop 50 Hz (CFM / m ³ /hr.) | 71/121 | 71/121 |
| External loop 50 Hz (CFM / m ³ /hr.) | 75/127 | 75/127 |
| Internal loop 60 Hz (CFM / m ³ /hr.) | 74/126 | 74/126 |
| External loop 60 Hz (CFM / m ³ /hr.) | 78/132 | 78/132 |
| ELECTRICAL DATA | | |
| Rated Voltage | 115 | 230 |
| Frequency (Hz) | 50/60 | 50/60 |
| Operating Range | +/- 10% | +/- 10% |
| Max. Power Consumption (W at 50/60 Hz) | 69 | 69 |
| Max. Nominal Current (A at 50/60 Hz) | 0.6 | 0.3 |
| Agency Approvals | cUL Listed CE GOST | |
| Power Input Description | 6-ft. cord with NEMA 5-15 plug | 6-ft. cord with NEMA 6-15 plug |
| ENCLOSURE PROTECTION | | |
| UL Type | Type 12 standard | |
| SOUND LEVEL | | |
| At 1.5 Meters | 56 dBA | |
| UNIT CONSTRUCTION | | |
| Material | Mild steel sheet metal standard Stainless steel optional | |
| Finish | RAL 7035 light-gray, semi-textured powder-coat paint standard | |
| UNIT DIMENSIONS | | |
| Height (in./mm) | 29.5/749.3 | 29.5/749.3 |
| Width (in./mm) | 10/254 | 10/254 |
| Depth (in./mm) | 3.09/78.5 | 3.09/78.5 |
| Weight (lb./kg) | 21/9.5 | 21/9.5 |

XR29 Models 8 W/°F (14 W/°C)



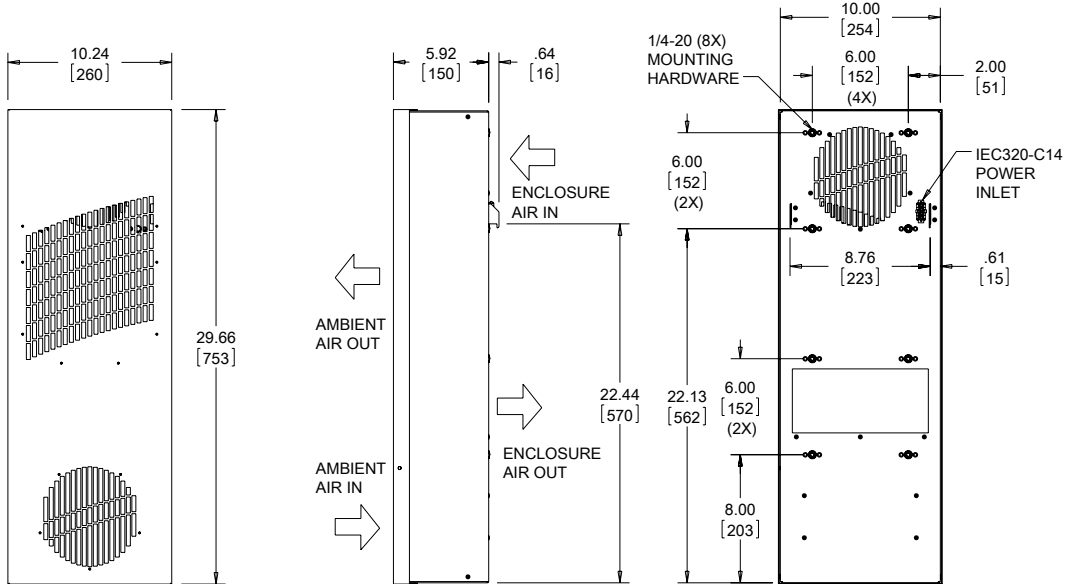
Cutout Dimensions

- NOTE:
1. MOUNTING GASKET SUPPLIED (NOT SHOWN)
 2. UNITS: in [mm]
 3. SERVICE CORD TERMINATED WITH APPROPRIATE PLUG:
NEMA 5-15p FOR 115V UNITS
NEMA 6-15P FOR 230V UNITS
 4. DETACHABLE AIRFLOW PLENUM MAY BE USED WHEN MOUNTING THE HEAT EXCHANGER INSIDE OR OUTSIDE OF THE ENCLOSURE

Visit www.HoffmanOnline.com to download 2D and 3D CAD drawings into the overall design of your electronic system.

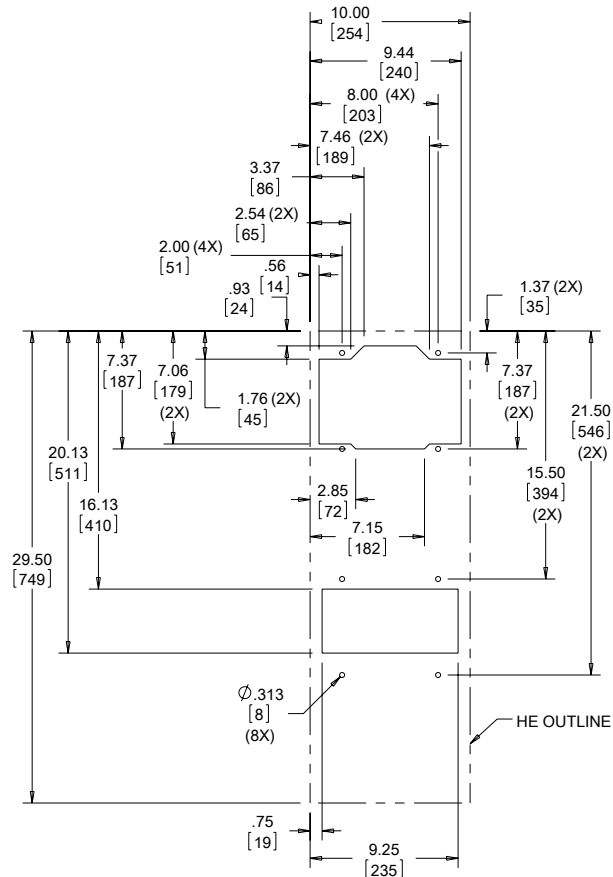
Performance Data **XR29 Models 18 W/°F (32 W/°C)**

| CATALOG NUMBER | | |
|---|---|--------------------------------|
| | XR291816012 | XR291826012 |
| COOLING PERFORMANCE | | |
| Nominal: | | |
| W per °F | 18 | 18 |
| W per °C | 32 | 32 |
| Refrigerant | N/A | N/A |
| Refrigerant Charge (ounces/grams) | N/A | N/A |
| Operating Temperature Range: | | |
| Maximum (°F/°C) | 140/60 | 140/60 |
| Minimum (°F/°C) | -20/-29 | -20/-29 |
| Airflow at 0 Static Pressure: | | |
| Internal loop 50 Hz (CFM / m ³ /hr.) | 126/214 | 126/214 |
| External loop 50 Hz (CFM / m ³ /hr.) | 120/204 | 120/204 |
| Internal loop 60 Hz (CFM / m ³ /hr.) | 140/237 | 140/237 |
| External loop 60 Hz (CFM / m ³ /hr.) | 133/226 | 133/226 |
| ELECTRICAL DATA | | |
| Rated Voltage | 115 | 230 |
| Frequency (Hz) | 50/60 | 50/60 |
| Operating Range | +/- 10% | +/- 10% |
| Max. Power Consumption (W at 50/60 Hz) | 207 | 207 |
| Max. Nominal Current (A at 50/60 Hz) | 1.8 | 0.9 |
| Agency Approvals | cUL Listed CE GOST | |
| Power Input Description | 6-ft. cord with NEMA 5-15 plug | 6-ft. cord with NEMA 6-15 plug |
| ENCLOSURE PROTECTION | | |
| UL Type | Type 12 standard Type 3R, 4, 4X optional | |
| SOUND LEVEL | | |
| At 1.5 Meters | 64 dBA | |
| UNIT CONSTRUCTION | | |
| Material | Mild steel sheet metal standard Stainless steel optional | |
| Finish | RAL 7035 light-gray, semi-textured powder-coat paint standard | |
| UNIT DIMENSIONS | | |
| Height (in./mm) | 29.66/753.3 | 29.66/753.3 |
| Width (in./mm) | 10.24/260.1 | 10.24/260.1 |
| Depth (in./mm) | 5.92/150.4 | 5.92/150.4 |
| Weight (lb./kg) | 32/15 | 32/15 |

XR29 Models 18 W°F (32 W°C)


89045125

- NOTE:
 1. MOUNTING GASKET SUPPLIED (NOT SHOWN)
 2. UNITS: in. [mm]

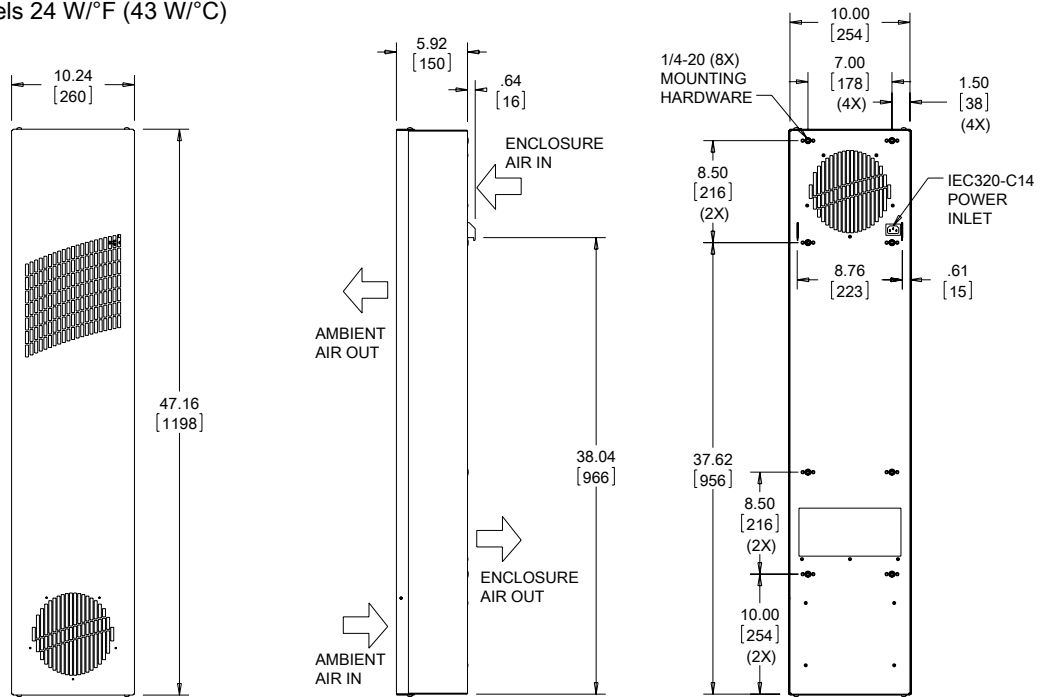

Cutout Dimensions

 Visit www.HoffmanOnline.com to download 2D and 3D CAD drawings into the overall design of your electronic system.

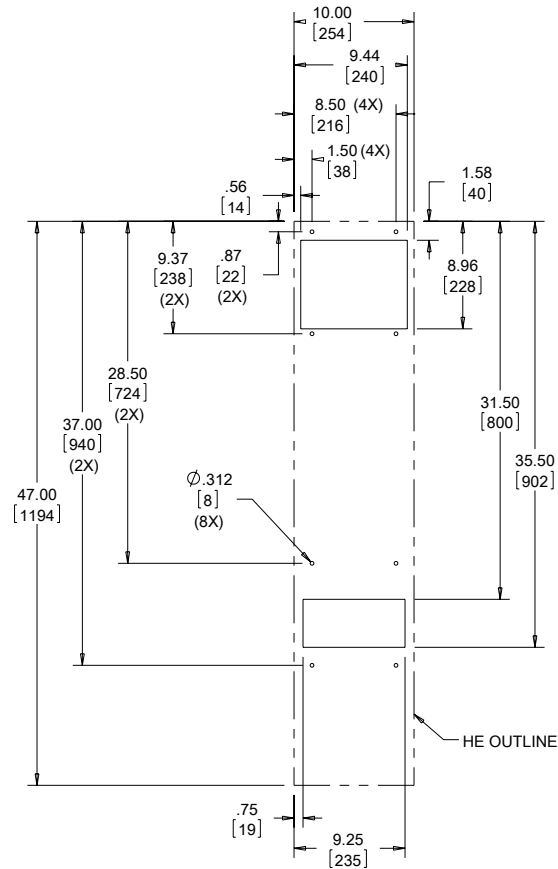
Performance Data **XR47 Models 24 W/°F (43 W/°C)**

| CATALOG NUMBER | | |
|---|--------------------------------|---|
| | XR472416012 | XR472426012 |
| COOLING PERFORMANCE | | |
| Nominal: | | |
| W per °F | 24 | 24 |
| W per °C | 43 | 43 |
| Refrigerant | N/A | N/A |
| Refrigerant Charge (ounces/grams) | N/A | N/A |
| Operating Temperature Range: | | |
| Maximum (°F/°C) | 140/60 | 140/60 |
| Minimum (°F/°C) | -20/-29 | -20/-29 |
| Airflow at 0 Static Pressure: | | |
| Internal loop 50 Hz (CFM / m ³ /hr.) | 140/238 | 140/238 |
| External loop 50 Hz (CFM / m ³ /hr.) | 118/200 | 118/200 |
| Internal loop 60 Hz (CFM / m ³ /hr.) | 156/265 | 156/265 |
| External loop 60 Hz (CFM / m ³ /hr.) | 131/222 | 131/222 |
| ELECTRICAL DATA | | |
| Rated Voltage | 115 | 230 |
| Frequency (Hz) | 50/60 | 50/60 |
| Operating Range | +/- 10% | +/- 10% |
| Max. Power Consumption (W at 50/60 Hz) | 207 | 207 |
| Max. Nominal Current (A at 50/60 Hz) | 1.8 | 0.9 |
| Agency Approvals | | cUL Listed CE GOST |
| Power Input Description | 6-ft. cord with NEMA 5-15 plug | 6-ft. cord with NEMA 6-15 plug |
| ENCLOSURE PROTECTION | | |
| UL Type | | Type 12 standard Type 3R, 4, 4X optional |
| SOUND LEVEL | | |
| At 1.5 Meters | | 68 dBA |
| UNIT CONSTRUCTION | | |
| Material | | Mild steel sheet metal standard Stainless steel optional |
| Finish | | RAL 7035 light-gray, semi-textured powder-coat paint standard |
| UNIT DIMENSIONS | | |
| Height (in./mm) | 47.16/1197.9 | 47.16/1197.9 |
| Width (in./mm) | 10.24/260.1 | 10.24/260.1 |
| Depth (in./mm) | 5.92/150.4 | 5.92/150.4 |
| Weight (lb./kg) | 51/23 | 51/23 |

XR47 Models 24 W/°F (43 W/°C)



89045126



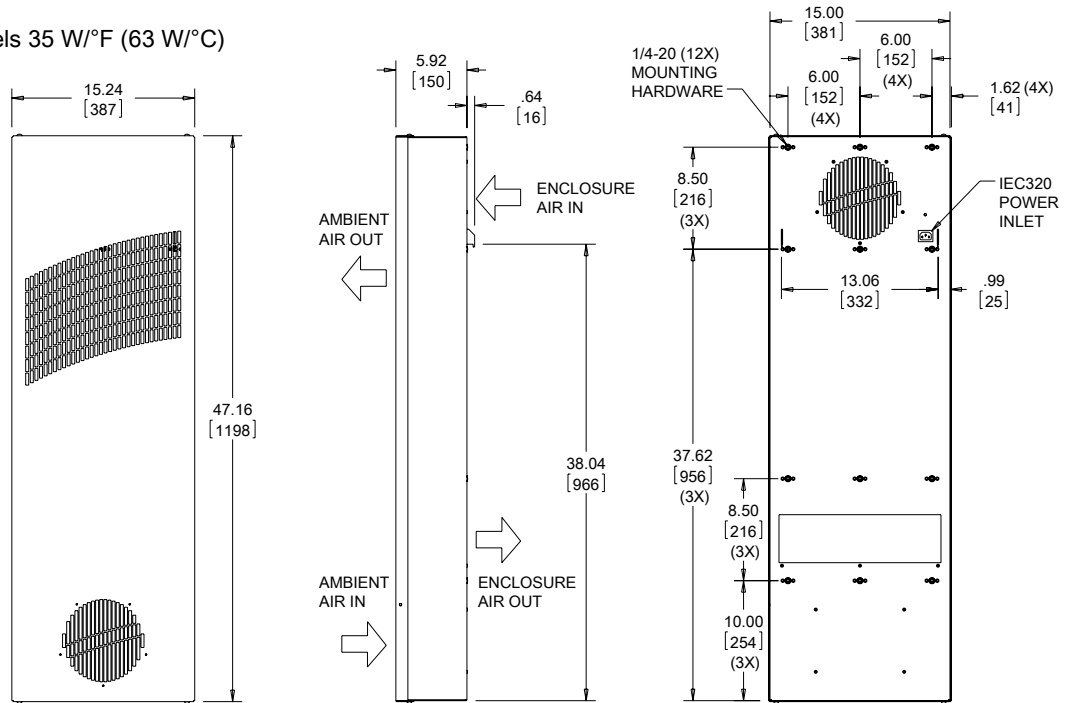
Cutout Dimensions

Visit www.HoffmanOnline.com to download 2D and 3D CAD drawings into the overall design of your electronic system.

Performance Data **XR47 Models 35 W/°F (63 W/°C)**

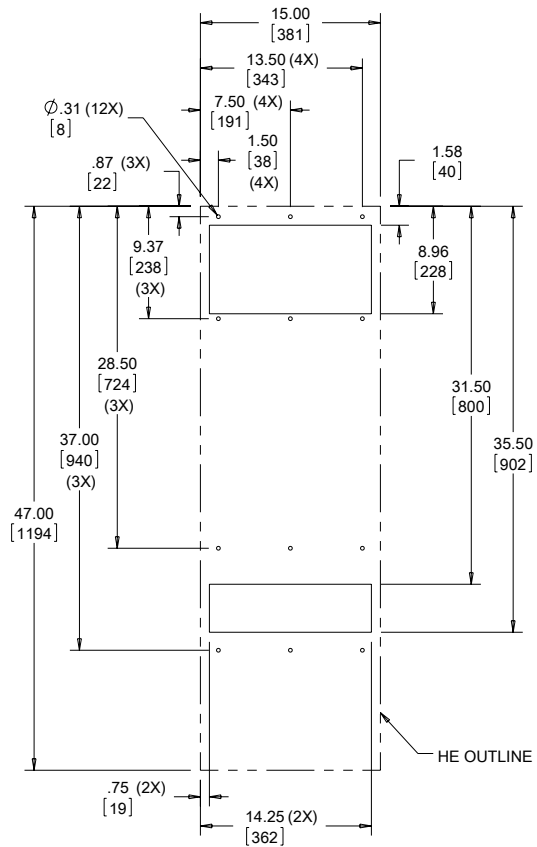
| CATALOG NUMBER | | |
|---|---|--------------------------------|
| | XR473516012 | XR473526012 |
| COOLING PERFORMANCE | | |
| Nominal: | | |
| W per °F | 35 | 35 |
| W per °C | 63 | 63 |
| Refrigerant | N/A | N/A |
| Refrigerant Charge (ounces/grams) | N/A | N/A |
| Operating Temperature Range: | | |
| Maximum (°F/°C) | 140/60 | 140/60 |
| Minimum (°F/°C) | -20/-29 | -20/-29 |
| Airflow at 0 Static Pressure: | | |
| Internal loop 50 Hz (CFM / m ³ /hr.) | 120/204 | 120/204 |
| External loop 50 Hz (CFM / m ³ /hr.) | 131/222 | 131/222 |
| Internal loop 60 Hz (CFM / m ³ /hr.) | 133/226 | 133/226 |
| External loop 60 Hz (CFM / m ³ /hr.) | 146/248 | 146/248 |
| ELECTRICAL DATA | | |
| Rated Voltage | 115 | 230 |
| Frequency (Hz) | 50/60 | 50/60 |
| Operating Range | +/- 10% | +/- 10% |
| Max. Power Consumption (W at 50/60 Hz) | 207 | 207 |
| Max. Nominal Current (A at 50/60 Hz) | 1.8 | 0.9 |
| Agency Approvals | cUL Listed CE GOST | |
| Power Input Description | 6-ft. cord with NEMA 5-15 plug | 6-ft. cord with NEMA 6-15 plug |
| ENCLOSURE PROTECTION | | |
| UL Type | Type 12 standard Type 3R, 4, 4X optional | |
| SOUND LEVEL | | |
| At 1.5 Meters | 68 dBA | |
| UNIT CONSTRUCTION | | |
| Material | Mild steel sheet metal standard Stainless steel optional | |
| Finish | RAL 7035 light-gray, semi-textured powder-coat paint standard | |
| UNIT DIMENSIONS | | |
| Height (in./mm) | 47.16/1197.8 | 47.16/1197.8 |
| Width (in./mm) | 15.24/387.1 | 15.24/387.1 |
| Depth (in./mm) | 5.92/150.4 | 5.92/150.4 |
| Weight (lb./kg) | 59/27 | 59/27 |

XR47 Models 35 W/°F (63 W/°C)



89045127

- NOTE:
 1. MOUNTING GASKET SUPPLIED (NOT SHOWN)
 2. UNITS: in [mm]
 3. 2-METER LONG SERVICE CORD TERMINATED WITH APPROPRIATE PLUG: NEMA 5-15P FOR 115V UNITS NEMA 6-15P FOR 230V UNITS



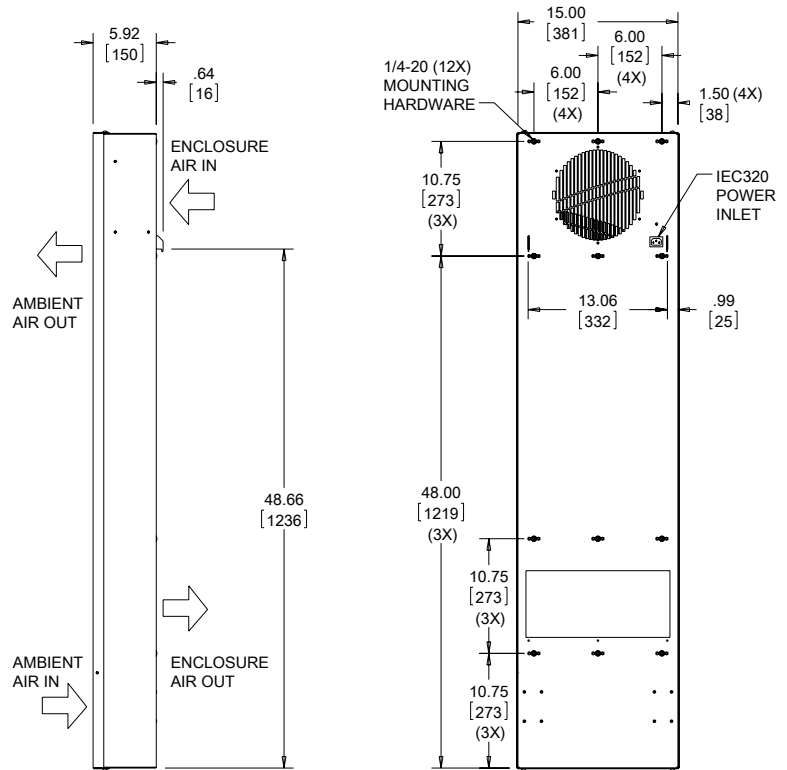
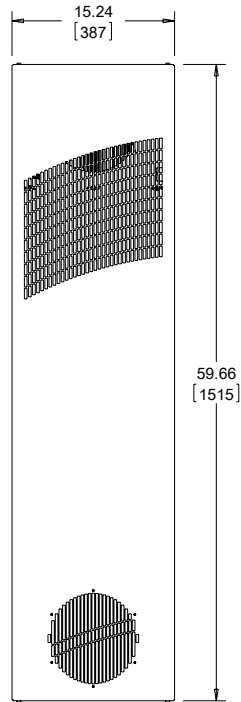
Cutout Dimensions

Visit www.HoffmanOnline.com to download 2D and 3D CAD drawings into the overall design of your electronic system.

Performance Data **XR60 Models 55 W/°F (99 W/°C)**

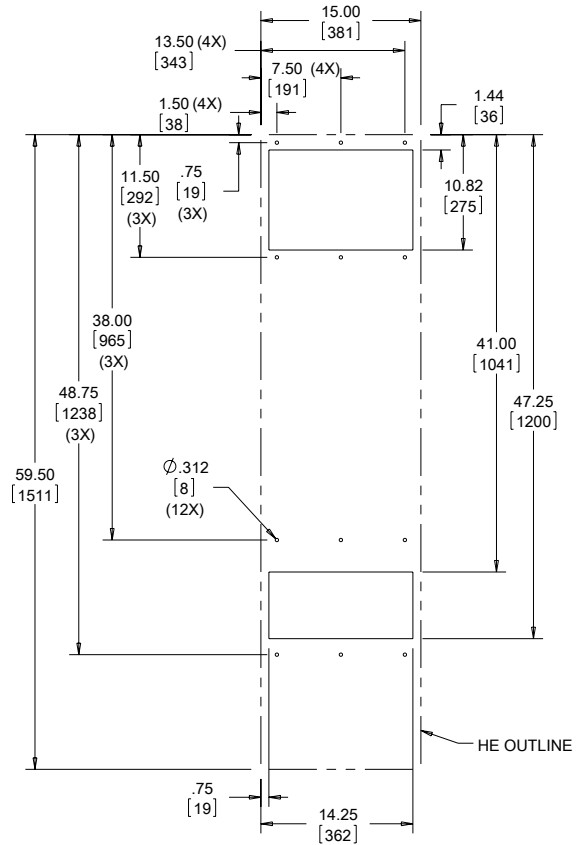
| CATALOG NUMBER | | |
|---|---|--------------------------------|
| | XR605516012 | XR605526012 |
| COOLING PERFORMANCE | | |
| Nominal: | | |
| W per °F | 55 | 55 |
| W per °C | 99 | 99 |
| Refrigerant | N/A | N/A |
| Refrigerant Charge (ounces/grams) | N/A | N/A |
| Operating Temperature Range: | | |
| Maximum (°F/°C) | 140/60 | 140/60 |
| Minimum (°F/°C) | -20/-29 | -20/-29 |
| Airflow at 0 Static Pressure: | | |
| Internal loop 50 Hz (CFM / m ³ /hr.) | 398/676 | 398/676 |
| External loop 50 Hz (CFM / m ³ /hr.) | 429/729 | 429/729 |
| Internal loop 60 Hz (CFM / m ³ /hr.) | 442/751 | 442/751 |
| External loop 60 Hz (CFM / m ³ /hr.) | 477/810 | 477/810 |
| ELECTRICAL DATA | | |
| Rated Voltage | 115 | 230 |
| Frequency (Hz) | 50/60 | 50/60 |
| Operating Range | +/- 10% | +/- 10% |
| Max. Power Consumption (W at 50/60 Hz) | 759 | 759 |
| Max. Nominal Current (A at 50/60 Hz) | 6.6 | 3.3 |
| Agency Approvals | cUL Listed CE GOST | |
| Power Input Description | 6-ft. cord with NEMA 5-15 plug | 6-ft. cord with NEMA 6-15 plug |
| ENCLOSURE PROTECTION | | |
| UL Type | Type 12 standard Type 3R, 4, 4X optional | |
| SOUND LEVEL | | |
| At 1.5 Meters | 73 dBA | |
| UNIT CONSTRUCTION | | |
| Material | Mild steel sheet metal standard Stainless steel optional | |
| Finish | RAL 7035 light-gray, semi-textured powder-coat paint standard | |
| UNIT DIMENSIONS | | |
| Height (in./mm) | 59.66/1515.3 | 59.66/1515.3 |
| Width (in./mm) | 15.24/387.1 | 15.24/387.1 |
| Depth (in./mm) | 5.92/150.4 | 5.92/150.4 |
| Weight (lb./kg) | 86/39 | 86/39 |

XR60 Models 55 W/°F (99 W/°C)



89045128

- NOTE:
1. MOUNTING GASKET SUPPLIED (NOT SHOWN)
 2. UNITS: in [mm]
 3. 2-METER LONG SERVICE CORD SUPPLIED WITH APPROPRIATE PLUG: NEMA 5-15P FOR 115V UNITS NEMA 6-15P FOR 230V UNITS



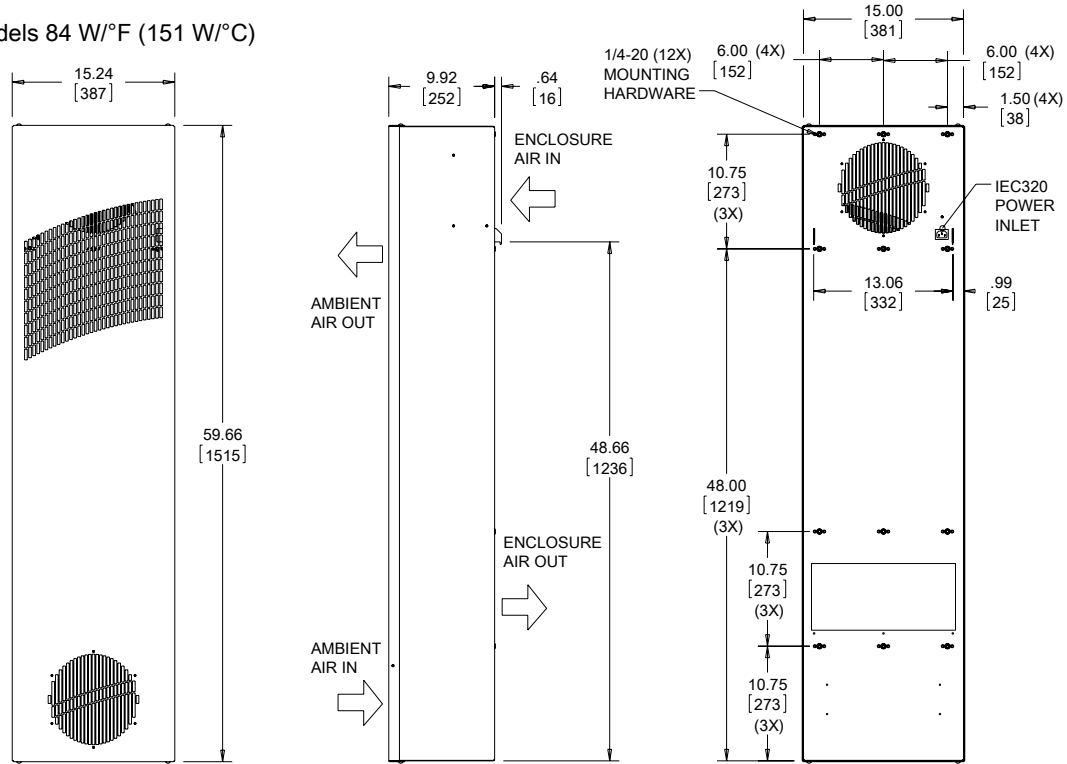
Cutout Dimensions

 Visit www.HoffmanOnline.com to download 2D and 3D CAD drawings into the overall design of your electronic system.

Performance Data **XR60 Models 84 W/°F (151 W/°C)**

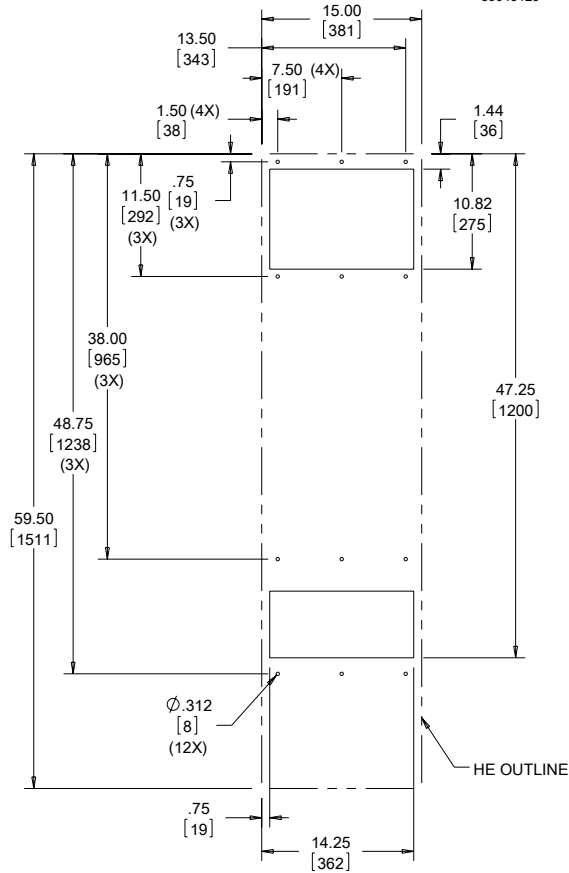
| CATALOG NUMBER | | |
|---|--------------------------------|---|
| | XR608416012 | XR608426012 |
| COOLING PERFORMANCE | | |
| Nominal: | | |
| W per °F | 84 | 84 |
| W per °C | 151 | 151 |
| Refrigerant | N/A | N/A |
| Refrigerant Charge (ounces/grams) | N/A | N/A |
| Operating Temperature Range: | | |
| Maximum (°F/°C) | 140/60 | 140/60 |
| Minimum (°F/°C) | -20/-29 | -20/-29 |
| Airflow at 0 Static Pressure: | | |
| Internal loop 50 Hz (CFM / m ³ /hr.) | 497/844 | 497/844 |
| External loop 50 Hz (CFM / m ³ /hr.) | 434/737 | 434/737 |
| Internal loop 60 Hz (CFM / m ³ /hr.) | 552/938 | 552/938 |
| External loop 60 Hz (CFM / m ³ /hr.) | 482/819 | 482/819 |
| ELECTRICAL DATA | | |
| Rated Voltage | 115 | 230 |
| Frequency (Hz) | 50/60 | 50/60 |
| Operating Range | +/- 10% | +/- 10% |
| Max. Power Consumption (W at 50/60 Hz) | 759 | 759 |
| Max. Nominal Current (A at 50/60 Hz) | 6.6 | 3.3 |
| Agency Approvals | | cUL Listed CE GOST |
| Power Input Description | 6-ft. cord with NEMA 5-15 plug | 6-ft. cord with NEMA 6-15 plug |
| ENCLOSURE PROTECTION | | |
| UL Type | | Type 12 standard Type 3R, 4, 4X optional |
| SOUND LEVEL | | |
| At 1.5 Meters | | 73 dBA |
| UNIT CONSTRUCTION | | |
| Material | | Mild steel sheet metal standard Stainless steel optional |
| Finish | | RAL 7035 light-gray, semi-textured powder-coat paint standard |
| UNIT DIMENSIONS | | |
| Height (in./mm) | 59.66/1515.3 | 59.66/1515.3 |
| Width (in./mm) | 15.24/387.1 | 15.24/387.1 |
| Depth (in./mm) | 9.92/252 | 9.92/252 |
| Weight (lb./kg) | 106/48 | 106/48 |

XR60 Models 84 W/°F (151 W/°C)



89045129

- NOTE:
 1. MOUNTING GASKET SUPPLIED (NOT SHOWN)
 2. UNITS: in [mm]
 3. 2-METER LONG SERVICE CORD SUPPLIED WITH APPROPRIATE PLUG: NEMA 5-15P FOR 115V UNITS NEMA 6-15P FOR 230V UNITS



Cutout Dimensions

Visit www.HoffmanOnline.com to download 2D and 3D CAD drawings into the overall design of your electronic system.

Notes