



**THINK
PROACTIVE
BE
PROACTIVE**

- Low minimum order quantity
- Private label option
- Increase quality while lowering costs
- Make our product line your product line
- Works **universally** with all major manufacturers products

ADVANCED SERIES ALARM MONITORS

The Advanced Series Alarm is a premium alarm that is easy to operate, reliable, and offers superior features to other alarms currently on the market. Ergonomically designed with the facility in mind, this alarm is reliable, efficient, and quick to respond. All Advanced Series Alarms work with our floor sensor pads. Simply switch the control on the alarm and turn it into a floor sensor monitor! **This alarm incorporates all of the features you ever wanted. This is the alarm you have been waiting for!**

ADVANCED MAGNET ALARM

Item # 10240W - White Item # 10240B - Black



- **Visual Signaling** - Top mounted flashing lights helps locate the monitor when alarming (fast red flash)
- Clip attaches securely to residents clothing.
- Reliable multi-directional magnetic pull-switch
- Adjustable-length cord clips to residents clothing
- **Hidden dual button reset** - Helps deter resident tampering while offering easy access for staff.
- **Meets JCAHO guidelines** – Alarm is always in the on position, making it impossible for staff to forget to turn the alarm on, and preventing the alarm from being accidentally turned off.
- **Mounting bracket** – Easily attaches to practically all wheelchairs and beds.
- **Mounting strap** - Easily detachable strap offers the facility more mounting options.
- **Volume options** – Low and high volume option offers the caregiver the option to adjust the alarm to the required volume.
- **Screw option** - Optional screw to close the battery cover making the alarms controls only accessible to facility staff.
- 0-2 second delay options helps reduce false alarms (for restless residents).
- Low battery alert.
- Multiple alarm tones.
- **Color options available** – Standard color options include black and white. Most other colors are available upon request with a private label option.
- Operates on one 9V battery (included).
- 1 Year warranty.

ADVANCED CHAIR/BED ALARM (no nurse call)



Item # 10250W - White

Item # 10250B - Black

- **Auto-Reset** – Automatically resets when pressure is reapplied to the sensor pad.
- **Visual Signaling** - Top mounted flashing lights helps to verify that the monitor is armed (slow green flash) and locate the monitor when alarming (fast red flash) - perfect for nighttime use.
- **Hidden dual button reset** - Helps deter resident tampering while offering easy access for staff.
- **Floor pad compatible** - Simply switch the control on the alarm and turn it into a floor sensor monitor!
- **Meets JCAHO guidelines** – Alarm is always in the on position, making it impossible for staff to forget to turn the alarm on, and preventing the alarm from being accidentally turned off.
- **Compatibility** – Can be used with most companies bed and chair sensor pads as well as both velcro and buckle seatbelt sensors and with Proactive's floor sensor pads.
- **Mounting bracket** – Easily attaches to practically all wheelchairs and beds.
- **Mounting strap** - Easily detachable strap offers the facility more mounting options.
- **Strain relief** - Avoid having to replace sensor pads because of ripped cords.
- **Volume options** – Low and high volume option offers the caregiver the option to adjust the alarm to the required volume.
- **Tone options** - Different tones allow you to choose the sound that works for you.
- **Screw option** - Optional screw to close the battery cover making the alarms controls only accessible to facility staff.
- 0-2 second delay options helps reduce false alarms (for restless residents).
- Pad-Floor option enables all alarms to work with floor sensor pads.
- Low battery alert. • Multiple alarm tones.
- **Color options available** – Standard color options include black and white. Most other colors are available upon request with a private label option.
- Operates on one 9V battery (included). • 1 Year warranty.

ADVANCED BED ALARM (w/ nurse call)



Item # 10260W - White

Item # 10260B - Black

ADVANCED ULTIMATE ALARM (all in on w/ nurse call)



Item # 10270W - White

Item # 10270B - Black

CHAIR ALARM, BED ALARM, AND NURSE CALL!

- **Auto-Reset** – Automatically resets when pressure is reapplied to the sensor pad.
- **Visual Signaling** - Top mounted flashing lights helps to verify that the monitor is armed (slow green flash) and locate the monitor when alarming (fast red flash) - perfect for nighttime use.
- **Hidden dual button reset** - Helps deter resident tampering while offering easy access for staff.
- **Floor pad compatible** - Simply switch the control on the alarm and turn it into a floor sensor monitor!
- **Nurse call port** – The ¼" plug works with most existing nurse call systems making this the ideal choice for a bed alarm monitor
- **Meets JCAHO guidelines** – Alarm is always in the on position, making it impossible for staff to forget to turn the alarm on, and preventing the alarm from being accidentally turned off.
- **Compatibility** – Can be used with most companies bed and chair sensor pads as well as both velcro and buckle seatbelt sensors and with Proactive's floor sensor pads.
- **Mounting bracket** – Easily attaches to practically all wheelchairs and beds.
- **Mounting strap** - Easily detachable strap offers the facility more mounting options.
- **Strain relief** - Avoid having to replace sensor pads because of ripped cords.
- **Volume options** – Low and high volume option offers the caregiver the option to adjust the alarm to the required volume.
- **Tone options** - Different tones allow you to choose the sound that works for you.
- **Screw option** - Optional screw to close the battery cover making the alarms controls only accessible to facility staff.
- 0-2 second delay options helps reduce false alarms (for restless residents).
- Pad-Floor option enables all alarms to work with floor sensor pads.
- Low battery alert.
- Multiple alarm tones.
- **Color options available** – Standard color options include black and white. Most other colors are available upon request with a private label option.
- Operates on one 9V battery (included)
- 1 Year warranty.

MAGNET, CHAIR ALARM, BED ALARM, AND NURSE CALL! EVERYTHING YOU NEED IN ONE ALARM.

- **Auto-Reset** – Automatically resets when pressure is reapplied to the sensor pad.
- **Visual Signaling** - Top mounted flashing lights helps to verify that the monitor is armed (slow green flash) and locate the monitor when alarming (fast red flash) - perfect for nighttime use.
- **Hidden dual button reset** - Helps deter resident tampering while offering easy access for staff.
- **Floor pad compatible** - Simply switch the control on the alarm and turn it into a floor sensor monitor!
- **Nurse call port** – The ¼" plug works with most existing nurse call systems making this the ideal choice for a bed alarm monitor
- **Meets JCAHO guidelines** – Alarm is always in the on position, making it impossible for staff to forget to turn the alarm on, and preventing the alarm from being accidentally turned off.
- **Magnet option auto sensor** - When a sensor pad is plugged in the magnet is automatically deactivated, eliminating the requirement of "dummy" magnets for deactivation.
- **Compatibility** – Can be used with most companies bed and chair sensor pads as well as both velcro and buckle seatbelt sensors and with Proactive's floor sensor pads.
- **Mounting bracket** – Easily attaches to practically all wheelchairs and beds.
- **Mounting strap** - Easily detachable strap offers the facility more mounting options.
- **Strain relief** - Avoid having to replace sensor pads because of ripped cords.
- **Volume options** – Low and high volume option offers the caregiver the option to adjust the alarm to the required volume.
- **Tone options** - Different tones allow you to choose the sound that works for you.
- **Screw option** - Optional screw to close the battery cover making the alarms controls only accessible to facility staff.
- 0-2 second delay options helps reduce false alarms (for restless residents).
- Pad-Floor option enables all alarms to work with floor sensor pads.
- Low battery alert • Multiple alarm tones.
- **Color options available** – Standard color options include black and white. Most other colors are available upon request with a private label option.
- **Floor pad compatible** - Simply switch the control and the alarm and turn it into a floor sensor monitor!
- Operates on one 9V battery (included) • 1 Year warranty.



Item# 10230

BASIC MAGNET ALARM

The Magnet Alarm is an unparalleled value. This easy-to-use, low cost pull-string monitor, activates when resident movement occurs beyond the preset distance. The monitor attaches to a bed or chair, and the clip is attached to the resident's clothing. An alarm sounds when the magnetic seal is broken between the monitor and the magnet, indicating that the resident has moved beyond the set parameters.

- Clip attaches securely to resident's clothing.
- Reliable multi-directional magnetic pull-switch.
- Adjustable-length cord clips to resident's clothing.
- **Meets JCAHO guidelines** – Alarm is always in the on position, making it impossible for staff to forget to turn the alarm on, and preventing the alarm from being accidentally turned off.
- **Mounting bracket** – Easily attaches to practically all wheelchairs or beds.
- **Color options available** – Standard color is black. Most other colors are available upon request with the private label option.
- Operates on one 9V battery (included).
- 6 month warranty.



Item# 10231

BASIC PREMIUM MAGNET ALARM

The Basic Premium Magnet alarm is the most versatile magnet alarm on the market. This alarm is a standard alarm with all your basic functions that can be used in any location. Easy to set up and use this magnet pull cord alarm is designed specifically to withstand "tugs" from any location, this patient alarm is built to last. When the patient rises the pull cord detaches from the magnet signaling the alarm. This alarm is built with the patients safety in mind.

- **Visual signaling battery check** - Built in battery check button with LED light enables the caregiver to check battery strength at all times.
- On/Off Switch - Convenient on/off switch for easy deactivation.
- Magnet can be pulled from any direction.
- **Tamper-proof Battery cover** - Two screws keep the battery chamber closed preventing patient tampering.
- **Versatility** – This alarm comes standard with a mounting holster, mounting strap, and extended length pull cord, allowing it to be used in a multitude of applications.
- **Mounting bracket** – Easily attaches to practically all wheelchairs and beds.
- **Mounting strap** - easily detachable strap offers the facility more mounting options.
- **Volume options** – Low (85dB) and high (95dB) volume option offers the caregiver the option to adjust the alarm to the required volume.
- Cord length adjust from 18" up to 58"
- 1 Year warranty.



Item# 10210

BASIC ALARM MONITOR

The Basic Alarm monitor is an excellent value. The monitor activates when patient lifts off of the pressure pad. This monitor **reduces false alarms** by automatically silencing the alarm when pressure is reapplied to the sensor pad as the patient settles back onto the sensor pad, or when the belt is re-attached. It is compatible with most manufacturer's alarm sensor pads, as well as buckle and velcro seatbelt sensor attachments.

- **Auto-Reset** – Automatically resets when pressure is reapplied to the sensor pad.
- **Volume options** – Low and high volume option offers the caregiver the option to adjust the alarm to the required volume.
- **Meets JCAHO guidelines** – Alarm is always in the on position, making it impossible for staff to forget to turn the alarm on, and preventing the alarm from being accidentally turned off.
- **Compatibility** – Can be used with most companies bed and chair sensor pads as well as both velcro and buckle seatbelt sensors and with Proactive's floor sensor pads.
- **Mounting bracket** – Easily attaches to practically all wheelchairs and beds.
- **Color options available** – Standard color is black. Most other colors are available upon request with the private label option.
- Operates on one 9V battery (included)
- 1 Year warranty.

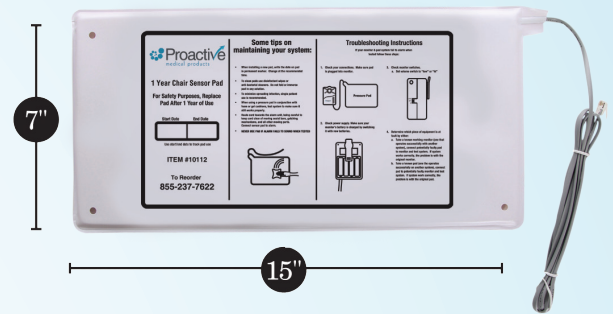
Sensor Pads

These weight-sensitive pressure pads are for bed monitor and chair monitor use. When connected, the pressure pad will trigger the monitor when weight is removed from the pressure pad alerting the caregiver to respond. The alarm will automatically reset when the patient returns to the safe position, reducing false alarms.

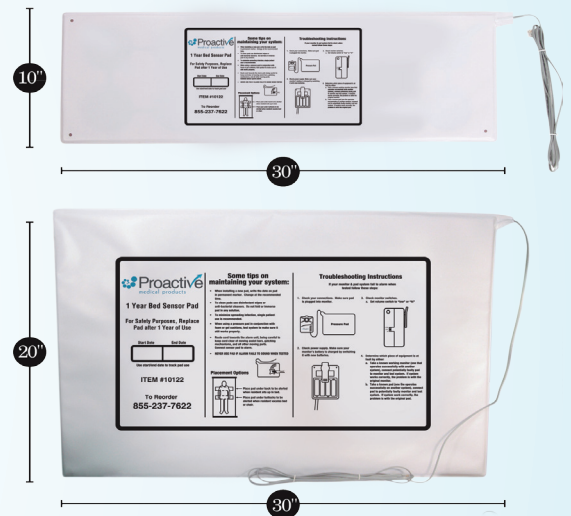
- Pads work with all major manufacturers alarm monitors (including UMP/ Microtech, Smart, Alimed, Direct Supply Attendant, & Graham Field)
- All pads are constructed with durable vinyl cover, moisture resistant and easy to clean.
- Classic chair sensor pads can be used on a variety of chairs and wheelchairs
- Slim design helps patients avoid the discomfort associated with other pads.
- Excellent sensor function warns caregivers of patients attempting to leave chair or bed earlier than most other pads.
- Thicker pads are more comfortable, sensitive, and more effective for lighter patients and for patients who use them for extended periods
- Large pad size helps reduce false alarms.

		Model #	Size
Classic Chair Sensor Pad	45 day	10110	7" x 15"
	6 month	10111	7" x 15"
	1 year	10112	7" x 15"
Classic Bed Sensor Pad	45 day	10120	10" x 30"
	6 month	10121	10" x 30"
	1 year	10122	10" x 30"
Extra Wide Bed Sensor Pad	45 day	10130	20" x 30"
	6 month	10131	20" x 30"
	1 year	10132	20" x 30"

CHAIR SENSOR PAD



BED SENSOR PAD



FLOOR SENSOR PAD

Weight-sensing floor mats trigger the alarm monitor when weight is placed on the floor mat. Floor mats can be placed at the side of a bed, hallway, or at an exit door to alert the caregiver. Floor mats are made of heavy duty vinyl and are moisture sealed for durability.

- Works with our standard basic alarm eliminating the requirement for costly proprietary alarms.
- Alarm sounds when residents exit the bed and step on the pressure-sensitive pad.
- Large, heavy-duty, nonslip grips assure that the sensor pad does not move.
- Thin edges let wheelchairs roll onto the pad, and prevent residents from accidentally tripping on the pad.
- Extra large pads measure 20" x 30" ensuring adequate coverage.

		Model #	Size
Floor Sensor Pad	45 day	10140	20" x 30"
	6 month	10141	20" x 30"
	1 year	10142	20" x 30"



Seat Belts

Velcro Seatbelt Sensor

Early Warning E-Z Release Seatbelt (Non-Restraining*)

**if a patient is unable to remove a device without assistance, it is considered a restraint under OBRA guidelines*

Designed to alert staff before the patient gets up and remind patient to be seated. The alarm sounds as soon as the patient disengages the fastening velcro alerting the staff and providing an extra margin of safety for those more active wheelchair patients.

- Durable heavy duty nylon lap belt sounds an alarm when velcro attachment is separated.
- Alerts staff and directs resident to stay seated for assistance.
- Belt is adjustable from 26" to 46"
- Features bright red pull-strap for easy locating and releasing.
- Metal grommets on ends of belt provide a customized fit and ensure a secure installation.
- Use on any chair: Geri-chairs, wheelchairs, side chairs.

NOTE: These devices are not restraints! They are designed to be able to be opened and removed by most patients



Item #10310

Buckle Seatbelt Sensor

(Non-Restraining*)

**if a patient is unable to remove a device without assistance, it is considered a restraint under OBRA guidelines*

Designed to alert staff before the patient gets up and remind patient to be seated. The buckle seatbelt is an easy-to-release device that holds the patient safely in the chair. The alarm sounds as soon as the patient disengages the fastening buckle alerting the staff and providing an extra margin of safety for those more active wheelchair patients. Durable heavy duty nylon belt sounds an alarm when the buckle is disengaged.

- Large red button is easy to locate and release with one finger.
- Metal grommets on ends of belt provide a customized fit and ensure a secure installation.
- Simple to use, press-to-release metal buckle ensures both safety and convenience.
- Use on any chair: Geri-chairs, wheelchairs, side chairs.

NOTE: These devices are not restraints! They are designed to be easily opened and removed by most patients



Item #10320

12" Seat Belt Extension

Available 12" belt extender option helps accommodate even the largest of patients. Made out of durable heavy duty nylon with metal grommets to provide a customized fit and a secure installation.

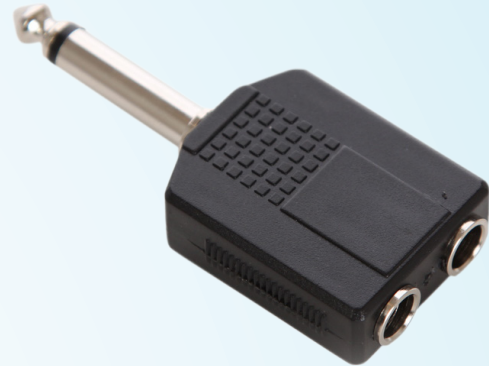


Item #10330



ALARM BAG

- Secures alarm to chair or bed
- Open mesh alarm visibility and gains access to switches
- Mounts with velcro



SPLITTER (t-connect)

- Instantly converts single jack into dual jack.



NURSE CALL CORD

These cords are ultra-sensitive momentary cords that are perfect for residents with limited mobility. It is easily activated and are moisture and dust resistant.

- Length: 8'
- 1/4" phone plug works with most brands of nurse call systems
- Ergonomically designed pendant is easy to grasp



NURSE CALL CONNECTOR PLUG

Connector cables are used to interface fall management monitors and other additional devices with your nurse call system.



270 Washington Street, Mount Vernon, NY 10553
Tel: 855-BE-PROACTIVE (855-237-7622) | Fax: 845-205-6005
E-mail: sales@proactivemedical.com | www.proactivemedical.com