



INSPIRE

# DVR RANGE

CMS MANUAL



# CMS Manual

For Inspire Blue and Inspire Red DVR Models



## Contents

• Introduction	2
• System Requirements	2
• Inspire CMS Installation	3
• CMS Log In Screen	5
• Inspire CMS Overview	6
• Device Manager	7
• Camera Manager	8
• User Manager	10
• Local Record Setting	11
• Streaming Video	12
• DVR Settings	13
• Remote Record	13
• Copy Over Network	14
• Playback Over Network	15
• Talkback	16
• PTZ Control	16

# CMS Manual

For Inspire Blue and Inspire Red DVR Models



## Introduction

### Product Overview

The CMS is designed to allow multiple Inspire DVRs to be viewed on a single computer. The CMS can access up to 32 Inspire DVRs from a single computer via a network. This system has functions including live view, remote recording, remote playback, etc. Friendly user interface is another important feature in this design.

Features	
Live View	View live video from a DVR(s)
Playback	Playback video from a remote DVR or the local PC
Recording	User can record to the local PC
Setup	User can setup devices and view
PTZ	The CMS can control PTZ cameras across the network
DVR Setup	Change the settings for a DVR across the network



## System Requirements

### Software Environment

Operating System	Windows XP with SP2, Windows 2000, Windows Vista, Windows 7
Software	Internet Explorer 6.0 or higher

### Hardware Requirement

CPU	Minimum: Pentium 4/Celeron 2.4GHz or above Recommended: Dual Core 3.0GHz
Memory	Minimum: 512MB Recommended: 1GB
VGA Card	AGP 2x with 128MB
Ethernet	100Mbit
Free Hard Drive Space	10GB

## Inspire CMS Installation

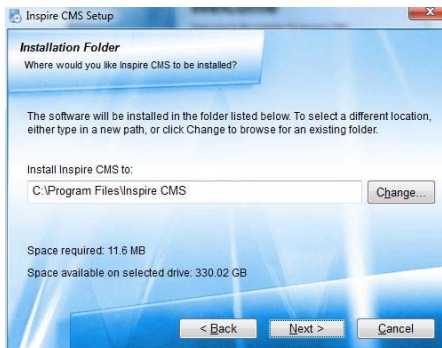
The Inspire CMS is a completely free software provided for all Inspire Blue and Inspire Red customers, the setup file can be obtained from the CD provided with the DVR or via [www.cop-eu.com](http://www.cop-eu.com)

Run the file named Inspire CMS Setup

You will be prompted with a Welcome screen, click **Next** to continue.



The next page asks which directory you would like to install the CMS to, usually the default path is sufficient. Click **Next** to continue and follow instructions on screen.



# CMS Manual

For Inspire Blue and Inspire Red DVR Models

Once installed press **Finish** to complete the installation.



Now that the installation is complete an Inspire CMS shortcut will have been created on the computer desktop, double click this icon to open the Inspire CMS program.

**NOTE:** It is recommended that the PC is rebooted before running the CMS for the first time.

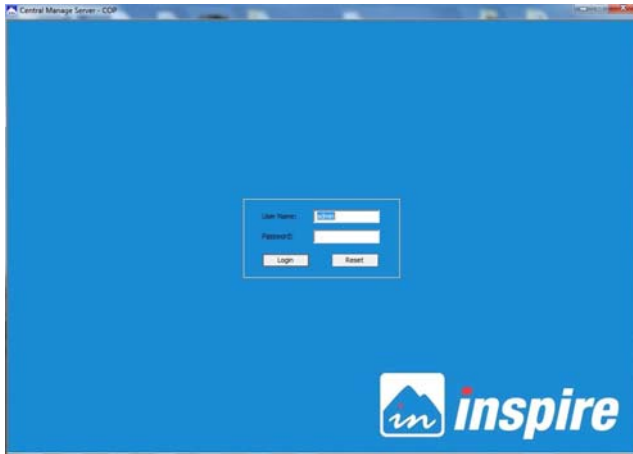
# CMS Manual

For Inspire Blue and Inspire Red DVR Models



## CMS Log in screen

To be able to use and manage the Inspire CMS software the user must first log on to the software by entering a valid username and password. This is to prevent unwanted individuals being able to view and control the various cameras and features.



To log in after the initial installation enter the following:

Username: **admin**

Password: **admin**

The default admin password can be changed in the CMS settings once the user has logged in, additional users can also be created with various privileges.

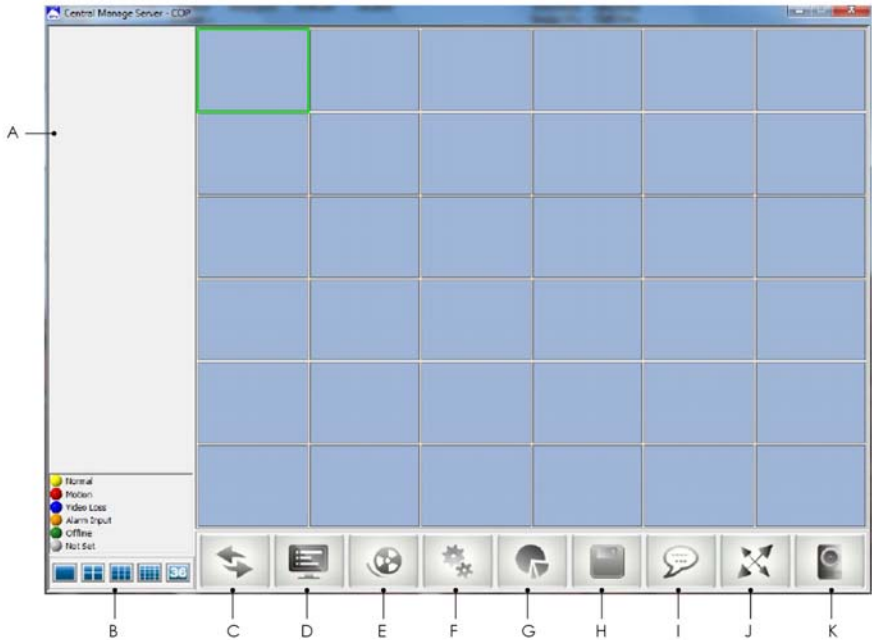
More information on creating user accounts can be found on page 10.

# CMS Manual

For Inspire Blue and Inspire Red DVR Models

## 

Once logged into the CMS software you will be presented with the following screen.



- A. View and Camera selection
- B. Screen view selection
- C. Connect/Disconnect
- D. CMS Menu
- E. Local record
- F. DVR settings
- G. Playback
- H. Copy
- I. Talkback
- J. PTZ control
- K. Remote alarm relays

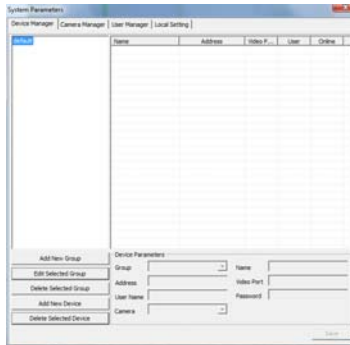


## Device Manager

To be able to view and control DVRs remotely, the DVR connection settings must be first set in the CMS.

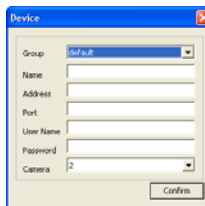


Click on the **CMS** menu button to bring up the screen below.



To add a new device to the connection list click the **Add new device** button, then input the various connection settings for your device.

- Group** This is the group the DVR will belong to, multiple groups can be created.
- Name** This is the reference name of the DVR, this can be anything you like.
- Address** This is the IP or Domain address used to connect to the DVR.
- Video port** This is the Command Port of the DVR, default is 5050.
- Username** This is your username for connecting to the DVR, default is Admin (case sensitive)
- Password** This is your password for connecting to the DVR, default is 888888.
- Camera** This is the number of camera channels available on the DVR



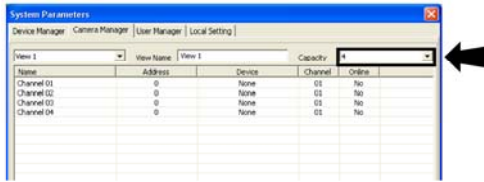
Click **Confirm** when completed and the device list will display the DVR you have added.



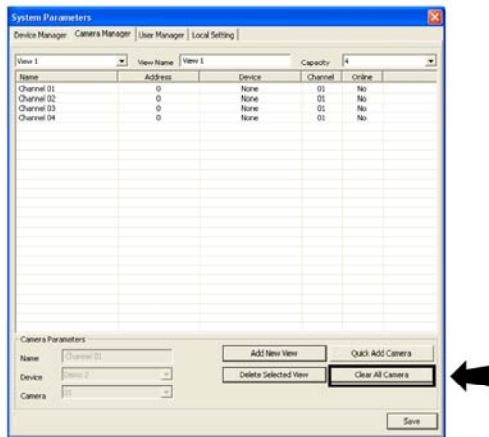
# CMS Manual

For Inspire Blue and Inspire Red DVR Models

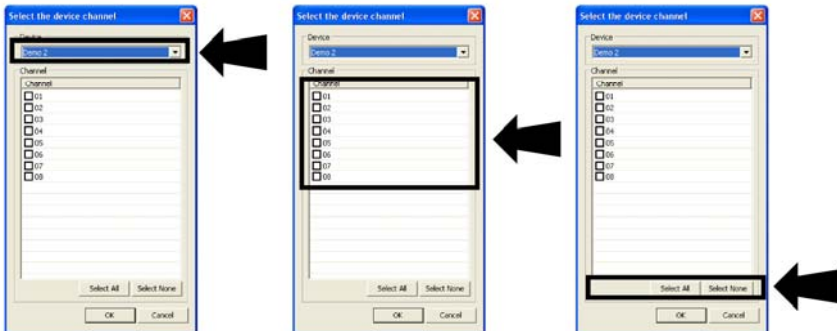
2. Click **Capacity** to select the maximum number of cameras you want to have in this view (this can be changed at a later date).
- 3.



4. Click **Quick Add Cameras**



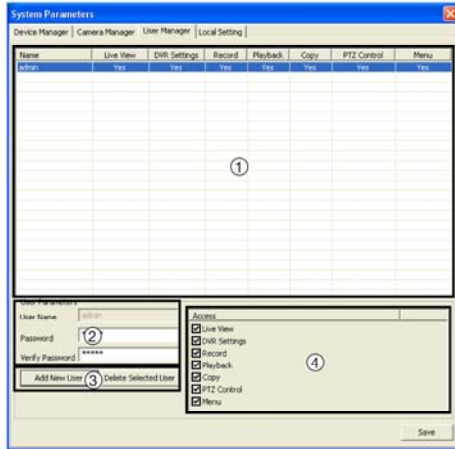
5. Select the DVR you want to view cameras from. You can then select individual cameras or you can select all camera



6. Confirm your settings and click **OK**

## User Manager

The CMS has built in support for multiple users, here you can add, delete and change user privileges.



1. List of all users (highlight a user to edit)
2. Login details for highlighted user
3. Control buttons to add or delete a user
4. Set access level for highlighted user

There are several different features that can be granted or denied to custom user accounts:

- Live View
- DVR Settings
- Record
- Playback
- Copy
- PTZ Control
- Menu

To add a new user click the **add new user** button, enter a username and password for the new user to use when logging on to the CMS.

To edit user privileges, select the user in the user list and place a tick in features you wish to grant the user and remove the tick from features you want to deny the user, once done click **Save**.

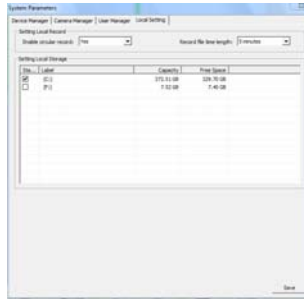
**NOTE:** Admin privileges can not be altered.



## Local Record

### Local Setting

Here you can set which of the hard drives in the remote PC the local recordings are saved, by default recordings are saved to: C:/cms\_cop/videos



Enable or disable circular recording

- Yes**      Overwrite the local recording in a loop
- No**       Stop recording after the preset record time

Record file length sets the record time of individual files.

Set the HDD to use for local recordings to be stored on.

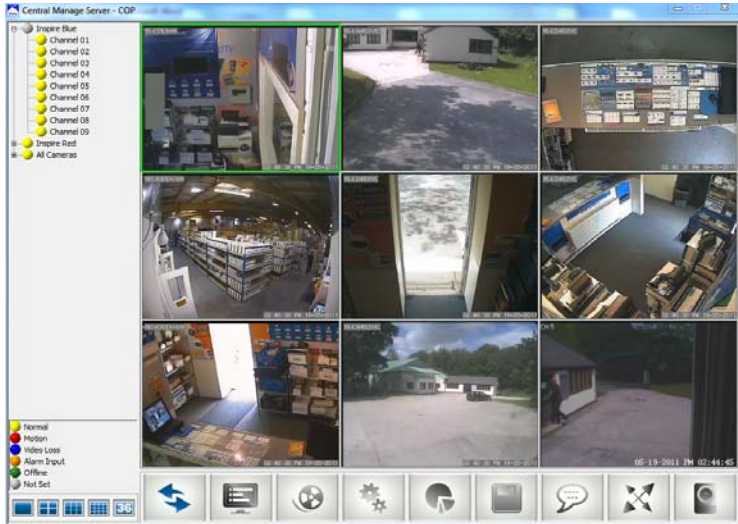
# CMS Manual

For Inspire Blue and Inspire Red DVR Models

## Streaming Video

Once the CMS is configured correctly the created views will appear in the top left window pane, the CMS has a feature which automatically checks if any of the DVR(s) are available and shows the current record status.

To start streaming video from one of the views, select a view and click the **connect/disconnect** button.

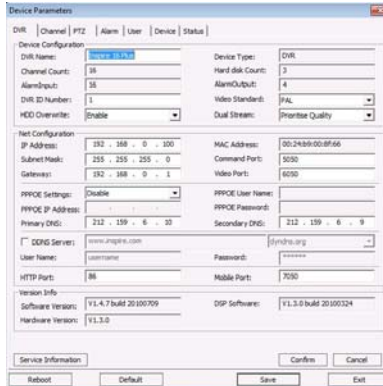


To stop the stream press the **connect/disconnect** button.

## DVR Settings

The device parameters feature allows the user to change settings that are saved on the DVR such as record settings, event settings and more.

Click the **DVR settings** button and then select which DVR to view.



## Remote Record

If when viewing the camera images over the network the user would like to save the live stream to the PC the user can use the Local Record feature.

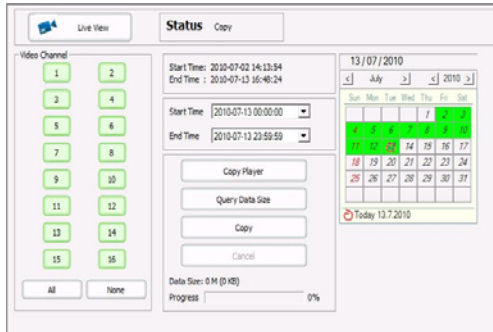


To use Local Record click the **Local Record** button. Local Record can be stopped at any time by click the local record button for a second time.

**Note:** *The Cop Player 2 software will be required to playback remote recordings, this can be downloaded from the Copy Menu.*

## Copy Over Network

If there are recordings on the DVR HDD(s) that need to be retrieved remotely this can be done using the Copy feature.



To use the Copy feature:

- Click **Copy**
- Enter required start and end times (available recordings on HDD(s) are listed above start time drop down box)
- Select cameras to copy in Video Channel field
- Click **Query Data Size** to get an estimate of the total size of the requested recordings.
- Click **Copy** and choose file name and destination

After save destination has been chosen the remote copy will start and the progress bar at the bottom of the screen will show the copy progress in percent.

*Note: The Cop Player 2 software will be required to playback copied recordings, this can be downloaded by clicking the Cop Player button. Please also note that remote copying recordings can take a very long time depending on amount of cameras and amount of time requested.*



## Playback Over Network

### Playback by Time

The viewing of recordings stored on the DVR HDD(s) can be done using the Playback feature.

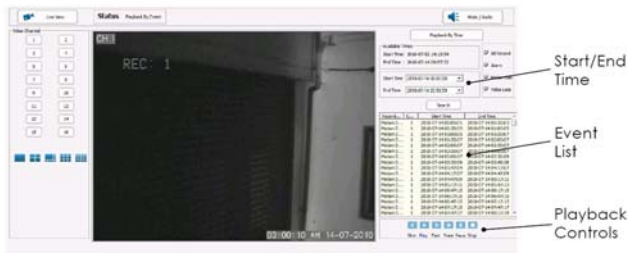


To playback images enter the desired time into the Play Time field on the right side of the browser and click play.

To change playback screen layout click the screen icons on the left of the browser.

### Playback by Event

To playback by Motion, Alarm or Video Loss event click the Playback by Event button in the top right of the browser.



Available recording times stored on the DVR HDD(s) appear at the top right of the web browser.

To search for an Event select a start and end time in the Start and End time fields on the right of the browser and click search.

**Note: Searches that exceed a 24 hour period may take a long time to return results**

To playback an event from the event list click the desired event to highlight it and click on play icon.

## Talkback

### Duplex Talkback

The DVR features a full duplex talkback system (Inspire Blue Plus and Inspire Red models). To use this feature when a microphone is connected to the Line Input of the DVR or a broadcast unit is connected to the audio output of the DVR click the Talkback button.



Once Talkback has been selected the audio stream from the DVR Line Input will be played through speakers or a headset connected to the remote PC.

### Broadcast (Available on all units)

If a microphone is also connected to the PC then when the user talks their voice will be broadcast out through the DVR audio output.

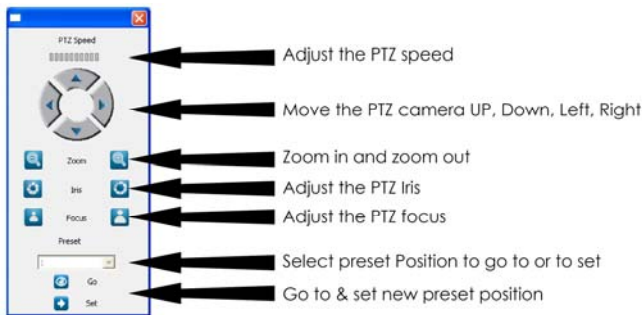
## PTZ Control

### PTZ Control

The Inspire CMS supports control of PTZ cameras if connected and programmed in the DVR.

To use the PTZ feature single click on desired camera (green border highlights selected camera) then press the **PTZ** button.

This will bring up the PTZ Interface



*Note: PTZ speed may be limited by the capabilities of the PTZ camera connected*



***COP***  <sup>®</sup>  
***SECURITY*** <sup>™</sup>  
*Professional CCTV*