



Operating Instruction APR SR 100 Half mask

General information

Together with filters/cartridges from the Sundström filter range in accordance with the NIOSH approval label.
Three sizes S/M, M/L and L/XL.

Together with compressed air attachment SR 307 and SR 358 or SR 359 accordance with NIOSH approval label.

When selecting equipment for SR 100 some of the factors that should be taken into account are as follows:

- Type of pollutants
- Concentrations
- Work intensity
- Protection requirements in addition to respiratory protective advice.

Risk assessment should be carried by a person who has suitable training and experience in the area.

Instructions for use for SR 100 should be read before use.

Unpacking SR 100 Packing list



Check that the equipment is complete in accordance with the packing list, and that no transport damages have occurred.

Packing list:

- Half mask
- Pre-filter holder
- Pre-filter
- Cleaning tissue
- User instruction
- Approval Label

Combination filters



During work in atmospheres containing both particulates and gases/vapors (such as spray painting) the particulate filter and chemical cartridge should be combined.



Press the filter/cartridge together so that the arrows on the particulate filter point towards the chemical cartridge.

Pre-filter



Pre-filter prevents premature clogging of the main filter. The pre-filter holder prevents damage to the main filter.

N.B. The pre-filter is a pre-filter only, and cannot be used as a substitute for particulate filter P100.

To fit the filter in a mask



Check that you have selected the correct filter type.



Fit the filter/combined filter in the mask so that the arrows on the filter points towards the user's face.

Carefully check that the edge of the filter is in the internal groove of the filter mounting all round.



Fit pre-filter SR 221 in the pre-filter holder and press it into place on the filter.

Fitting



Adjust the head harness so that the mask fits snugly and comfortably. It is important that the bands are placed according to the picture. Any other method will result in inadequate seal and less comfort.



Place the palm of your hand lightly over the hole on the pre-filter holder.



Breathe in deeply and hold your breath.
If the seal is good, the mask will press
against your face.
Inadequate fit may be caused by beard
growth, stubble, deep facial furrows or
unusual face size.

Leakage may also occur if the exhalation
membranes are soiled or defective.

Cleaning Daily maintenance



Remove the filter and the membranes. Clean the mask with the Sundström antibacterial cleaning tissue SR 5226.



Check and replace worn or damaged parts. Pay special attention to the exhalation membranes. Making sure that they are clean and intact is as important as regular filter replacement.

Manual cleaning



Remove the filter and membranes.



Detach the head harness.



Use soft brush and clean with soapy water. Rinse and air dry.

Warning! Never use solvents for cleaning.

Storage



The best way to store the mask, clean and dry is in the Sundström storage box SR 230 or storage bag SR 339.

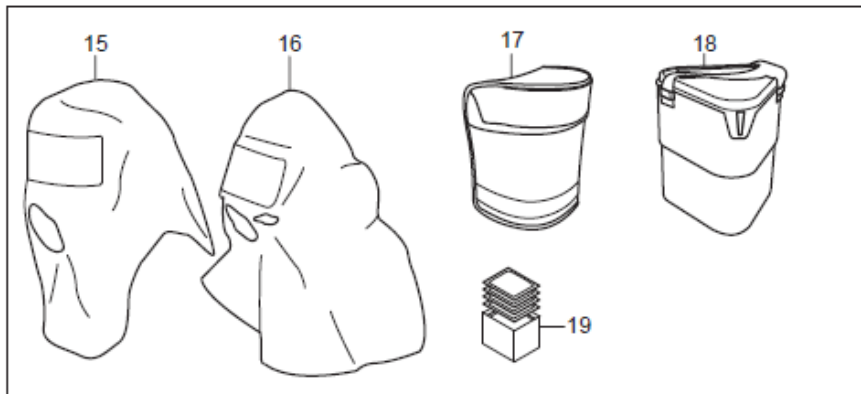
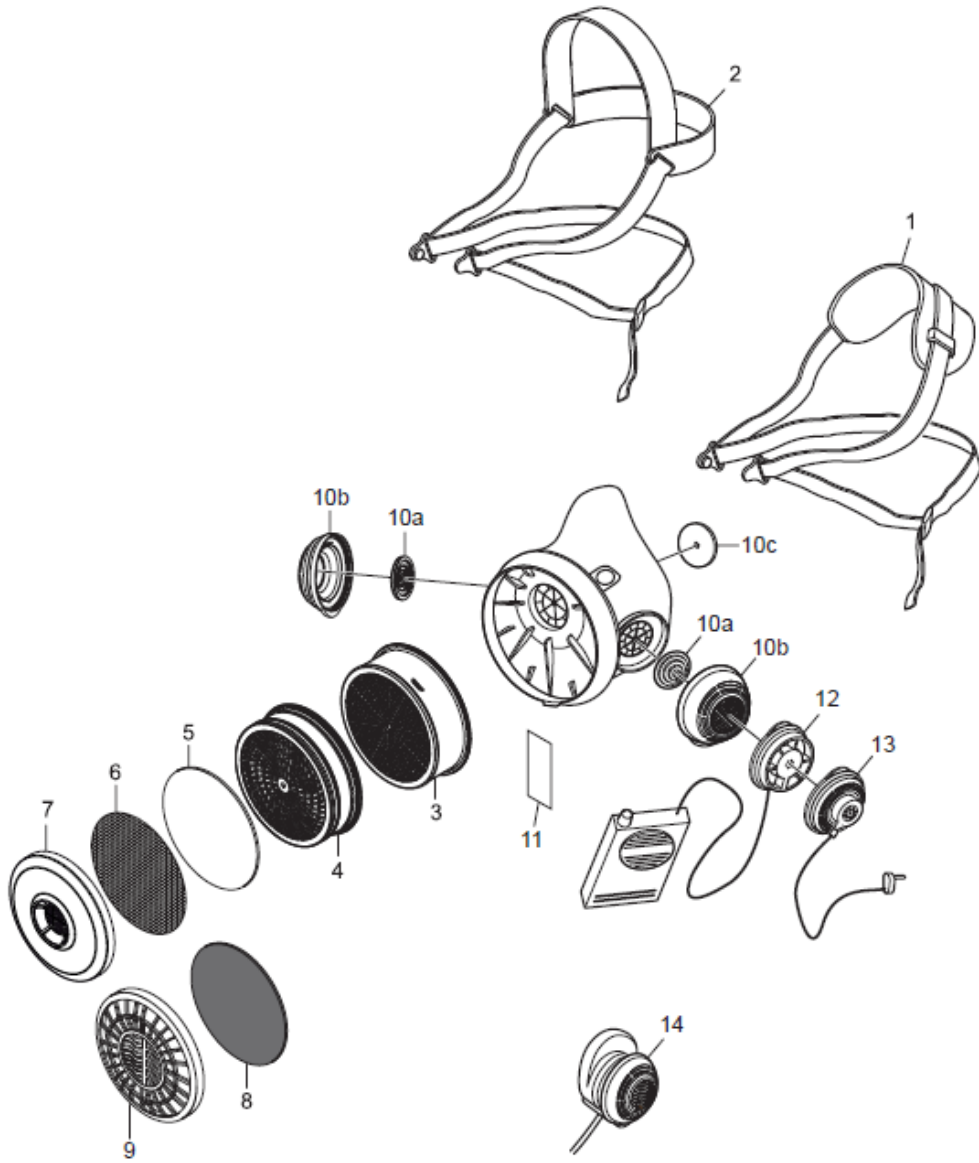




SR 100

EN

Spare parts / Accessories



No.	Description	Ordering No.
1.	Head harness SR 363, single strap	R01-2001
2.	Head harness SR 362, cradle strap	R01-2002
3.	Chemical Cartridge (SR 218-6 OV, SR 231 CL/HC/SD/FM, SR 232 OV/SD/CL/HC/HF, SR 229 AM/MA)	-
4.	Particulate Filter P100, SR 510	H02-1321
5.	Pre-filter SR 221	H02-0121
6.	Spark Arrester SR 336	T01-2001
7.	Pre-filter holder	R01-0605
8.	Fit check disc SR 322	R01-0303
9.	Pre-filter holder SR 5153	R01-0604
10.	Membrane kit	R01-2004
10a.	Exhalation x2	-
10b.	Valve covers x2	-
10c.	Inhalation x1	-
11.	Permanent ID tag SR 368	R09-0101
12.	SmallTalk Voice Amplifier, ST2-SR	T01-1219
13.	Microphone SR 342	T01-1213
14.	Fit Test Adapter SR 328	T01-1202
15.	Protective hood SR 64	H09-0321
16.	Protective hood short SR 345	H09-1021
17.	Storage bag SR 339	H09-0112
18.	Storage box SR 230	H09-3012
19.	Cleaning wipes SR 5226. Box of 50.	H09-0401
	Service kit contains:	R01-2005
1.	Head harness SR 363, single strap x1	-
7.	Pre-filter holder SR 5153 x1	-
10.	Membrane kit x1	-