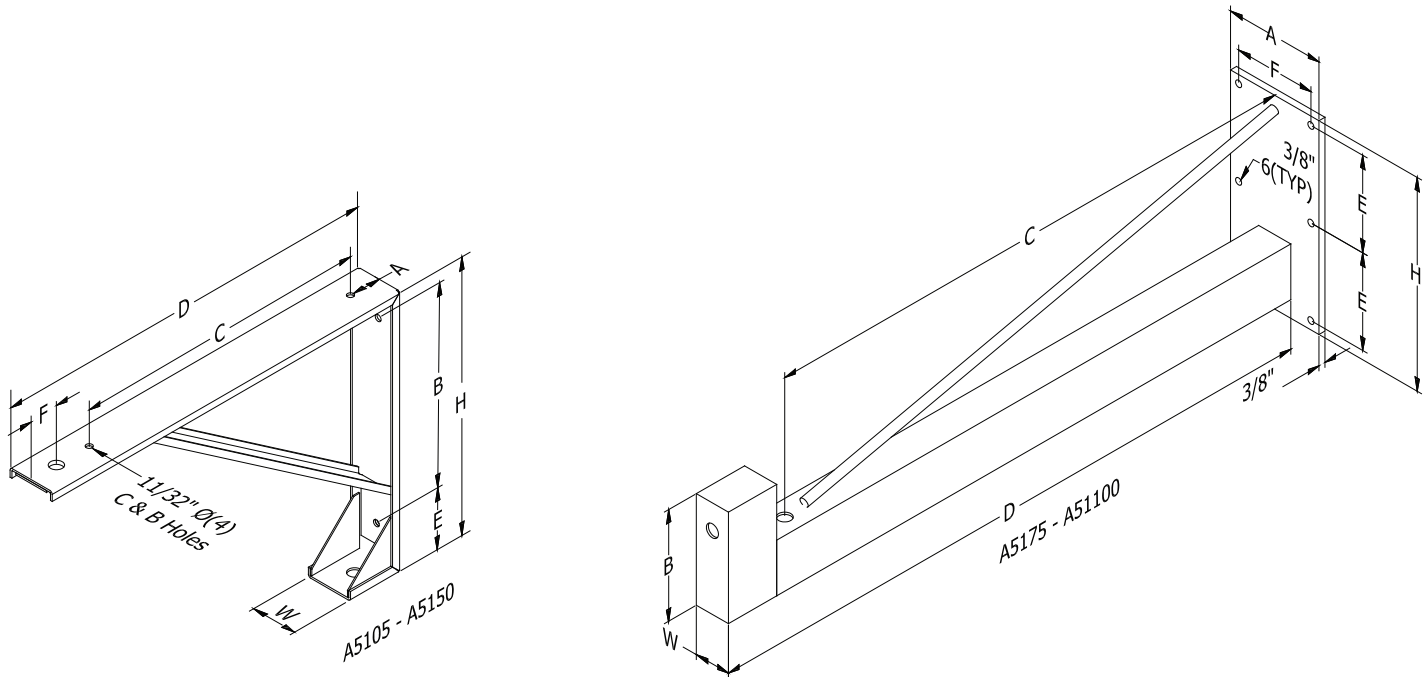
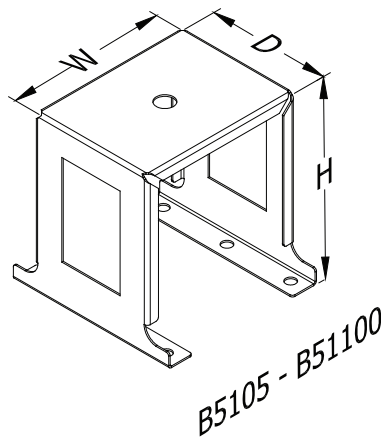


5100 SERIES BRACKETS



A5100 BRACKET

	HEATER KW	BRACKET	WEIGHT (lbs)	A	B	C	D	E	F	H	W
WALL BRACKET	3.3 - 5	A5105	9	1-3/4	10-1/2	9-1/4	20-3/4	2	1-1/2	14-1/2	2-1/2
	7.5 - 20	A5120	13	2-1/8	12	20-1/8	25-1/8	2-1/8	2-5/32	16	3-1/2
	25 - 50	A5150	16	2-1/8	13-1/2	19-7/8	28-3/4	2-1/8	2-1/8	17-1/2	3-1/2
	60 - 70	A5175	25	5-1/2	6-1/8	30-1/2	35	5-1/4	4-1/2	11-1/2	2
	80 - 100	A51100	36	5-1/2	6-1/8	30-1/2	35	5-1/4	4-1/2	11-1/2	2



B5100 BRACKET

	HEATER KW	BRACKET	WEIGHT (lbs)	D	H	W
HEATER BRACKET	3.3 - 20	B5105	2	4-1/4	6	6-1/2
	25 - 50	B5150	3	4-1/4	6	10-1/8
	60 - 70	B5175	5	4-1/4	6	13-3/4
	80 - 100	B51100	12	10-1/4	6	18

B5100 Included with A5100 brackets