

OPERATION – INSTALLATION – PARTS MANUAL



If you have questions about the product you have purchased or would like to leave us feedback please contact us via our website www.fostoriaindustries.com or by calling 1-800-495-4525.

DURABAKE Electric Portable Heat banks

MODEL / PART NO.'S:
HP-5-QT / 884129
HP-6-QT / 884136
HP-11-QT / 884143

WARNING! DO NOT ATTEMPT TO INSTALL, OPERATE, OR SERVICE THIS PRODUCT BEFORE READING ALL INSTRUCTIONS CAREFULLY. FAILURE TO COMPLY WITH THESE INSTRUCTIONS COULD RESULT IN FIRE, PERSONAL INJURY AND/OR PROPERTY DAMAGE! RETAIN INSTRUCTIONS FOR FUTURE REFERENCE.

DESCRIPTION

Fostoria portable heavy-duty Durabake heaters are designed to provide electric infrared heat for a variety of process heating applications. They can be wheeled to the job and connected to disconnect switches or any approved service. All units are clean in operation, and take or add nothing to the atmosphere.

All models are supported by a steel base and heavy-duty casters for ease of portability. Models have gold anodized aluminum reflectors mounted in a 20 ga. steel housing. Each bank is easily adjusted for proper and exact positioning. The three models also include high efficiency medium-wave infrared emitters that provide direct infrared heat to the parts or product being heated; fused disconnect switches, and a 20' type SO cable.

SPECIFICATIONS

Power requirements: (Factory wired for Single PH)

HP-5-QT.....4.8 Kw 240V (1PH: 20.0 Amps)
HP-6-QT.....6.4 Kw 240V (1PH: 26.7 Amps)
HP-11-QT.....11.2 Kw 240V (1PH: 46.7 Amps)

Overall dimensions/shipping weight:

HP-5-QT.....44-5/8" W x 56-1/2" H 116 lbs
HP-6-QT.....66-5/8" W x 56-1/2" H 141 lbs
HP-11-QT.....66-5/8" W x 89-1/2" H 225 lbs

Heated Area:

HP-5-QT.....40" x 44"
HP-6-QT.....61" x 44"
HP-11-QT.....61" x 77"

Housing.....20 ga. steel

Reflector.....0.32 gold anodized aluminum

Cable (20 ft. length)

HP-5-QT.....12-3 Type SO
HP-6-QT.....10-3 Type SO
HP-11-QT.....6-3 Type SO

IMPORTANT SAFETY INFORMATION

Read all instructions before using this heater.

1. Make certain that the power source conforms to the electrical requirements of the heater. Disconnect power before installing or servicing. If the power disconnect is out of sight, lock it in the open position and tag it to prevent unexpected application of power. Failure to do so could result in fatal electric shock.

WARNING: DO NOT DEPEND UPON A THERMOSTAT OR OTHER SWITCH AS THE SOLE MEANS OF DISCONNECTING POWER WHEN INSTALLING OR SERVICING THE HEATER. ALWAYS DISCONNECT POWER AT THE MAIN CIRCUIT BREAKER AS DESCRIBED ABOVE. FAILURE TO DO SO COULD RESULT IN FATAL ELECTRIC SHOCK.

2. This heater is intended ONLY for installation in accordance with the National Electric Code (NEC), all applicable local codes and ordinances, and all sections of this manual. Any variance voids the warranty and may create unsafe conditions. All wiring should be done by a qualified electrician, using copper wire only.
3. Special attention must be given to any grounding information pertaining to this heater. To prevent the risk of electrocution, the heater must be securely and adequately grounded. This should be accomplished by connecting the grounded conductor to the service panel. To ensure a proper ground, the grounding means must be tested by a qualified electrician
4. Do not insert fingers or foreign objects into the heater. Do not block or tamper with the heater in any manner while it is in operation. Do not touch heater while in operation or just after it has been turned off, as some parts may be hot enough to cause injury.
5. Do not attach ductwork to this heater or attempt to use it as a make-up air heater. Such use voids the warranty and may create unsafe conditions.
6. This heater is intended for general heating applications ONLY. **IT MUST NOT BE USED IN POTENTIALLY DANGEROUS LOCATIONS SUCH AS FLAMMABLE, EXPLOSIVE, CHEMICAL-LADEN, OR WET ATMOSPHERES.**
7. CAUTION: Check branch voltage. Heaters should be operated at voltages no higher than the heating elements and the heater are designed for. (Lower voltages, however, pose no problem other than a loss of wattage).

WARNING: FAILURE TO FOLLOW THE ABOVE SAFETY INSTRUCTIONS COULD RESULT IN FATAL SHOCK HAZARDS! SAVE THESE INSTRUCTIONS!

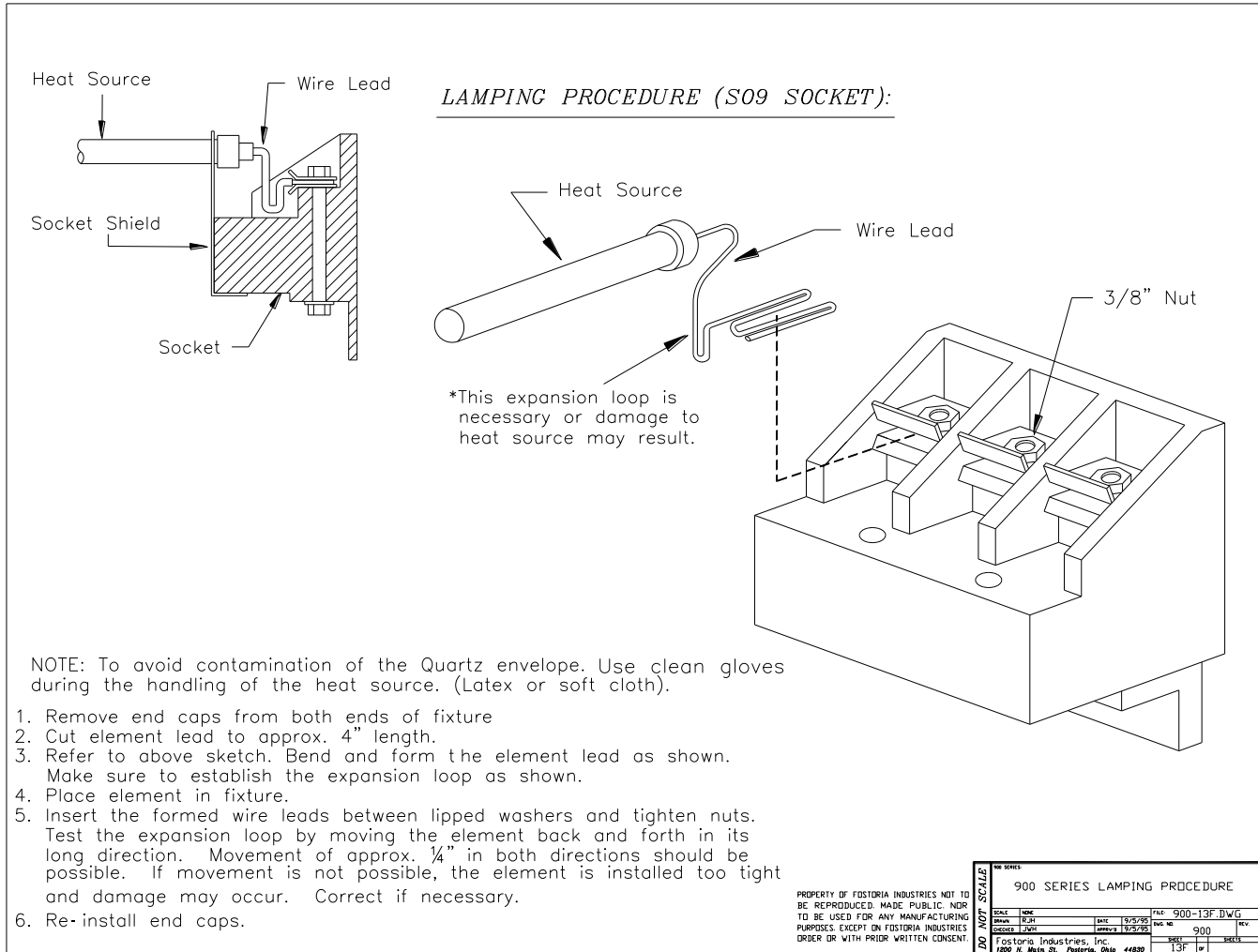
QUARTZ TUBE INSTALLATION

CAUTION: Care should be taken not to touch the quartz envelope with the bare hand. Use soft cotton or latex gloves. If a quartz element has been in contact with the skin, simply wipe the tube off with alcohol or paint thinner. Refer to the diagram below for proper installation of the quartz

OPERATION

Unit can be directly wired to an approved safety switch, using the 20' cable (supplied), and energized by the disconnect switch.

A properly sized plug (customer supplied) can also be wired to the cable and plugged into a matching receptacle.



REPLACEMENT QUARTZ HEATING ELEMENTS

Model	Replacement Element #	Wattage/Voltage
HP-5-QT	32159-053	1200/240
HP-6-QT	32159-061	1600/240
HP-11-QT	32159-061	1600/240

FOSTORIA INDUSTRIES P. O. BOX 4973, JOHNSON CITY, TN 37602

The warranty herein set forth is in lieu of all other warranties expressed or implied.

Fostoria Industries, warrants its products to the owner against defects in material and workmanship for a twelve (12) month period under normal use and service following date of manufacture or installation when proof of such is provided to seller.

This Warranty requires that the owner, or his agent, install the equipment in accordance with the National Electrical Code, any other applicable heating or electrical codes and the manufacturer's installation instructions. It further requires that he perform reasonable and necessary maintenance on the unit. The company is not liable for abuse or misuse of product as may be finally determ

The obligation of Fostoria Industries, Inc. under the terms of this warranty, shall be to supply a new part, repair of defective part, or a refund, at the company's option with no cost to owner for the new or repaired part. Such parts are to be returned to the factory, or such other location as the company may designate. This warranty does not obligate Fostoria Industries, Inc. to bear the cost of labor in replacing any assembly, unit or component part thereof, nor does the company assume any liability for secondary charges, expenses for installing or removal, or any other consequential losses. The company's maximum liability shall not in any case exceed the list price for the product claimed to be defective.

The warranty shall not apply to any product or parts of products that have been repaired or altered outside of Seller's factory in any manner. Warranty is void on products that have been determined to have been subjected to misuse, negligence or accident or which have n a manner contrary to Seller's instructions.