



No.:

Date: 28-DEC-2012

Customer :

TECHNICAL PROPOSAL
Single-phase induction motor - Squirrel cage rotor

Product line : Compressor Duty : Single-Phase - ODP

Catalog Number : 00136OS1BCDB56

List Price : \$278

Notes:

Performed by:

Checked:



No.:

Date: 28-DEC-2012

DATA SHEET

Single-phase induction motor - Squirrel cage rotor

Customer :
Product line : Compressor Duty : Single-Phase - ODP

Frame : B56
Output : 1 HP
Frequency : 60 Hz
Poles : 2
Full load speed : 3480
Slip : 3.33 %
Voltage : 115/208-230 V
Rated current : 12.2/6.10-6.10 A
Locked rotor current : 68.3/34.2 A
Locked rotor current (I_L/I_n) : 5.6
No-load current : 8.00/4.00 A
Full load torque : 1.49 lb.ft
Locked rotor torque : 180 %
Breakdown torque : 250 %
Design : ---
Insulation class : B
Temperature rise : 80 K
Locked rotor time : 6 s (hot)
Service factor : 1.00 (1.00 at 208V)
Duty cycle : COMPRESSOR
Ambient temperature : -20°C - +40°C
Altitude : 1000
Degree of Protection : IP21
Approximate weight : 21 lb
Moment of inertia : 0.03322 sq.ft.lb
Noise level : ---

	D.E.	N.D.E.	Load	Power factor	Efficiency (%)
Bearings	6204 ZZ	6203 ZZ	100%	0.78	67.0
Regreasing interval	---	---	75%	0.70	65.0
Grease amount	---	---	50%	0.59	59.0

Notes:

Performed by

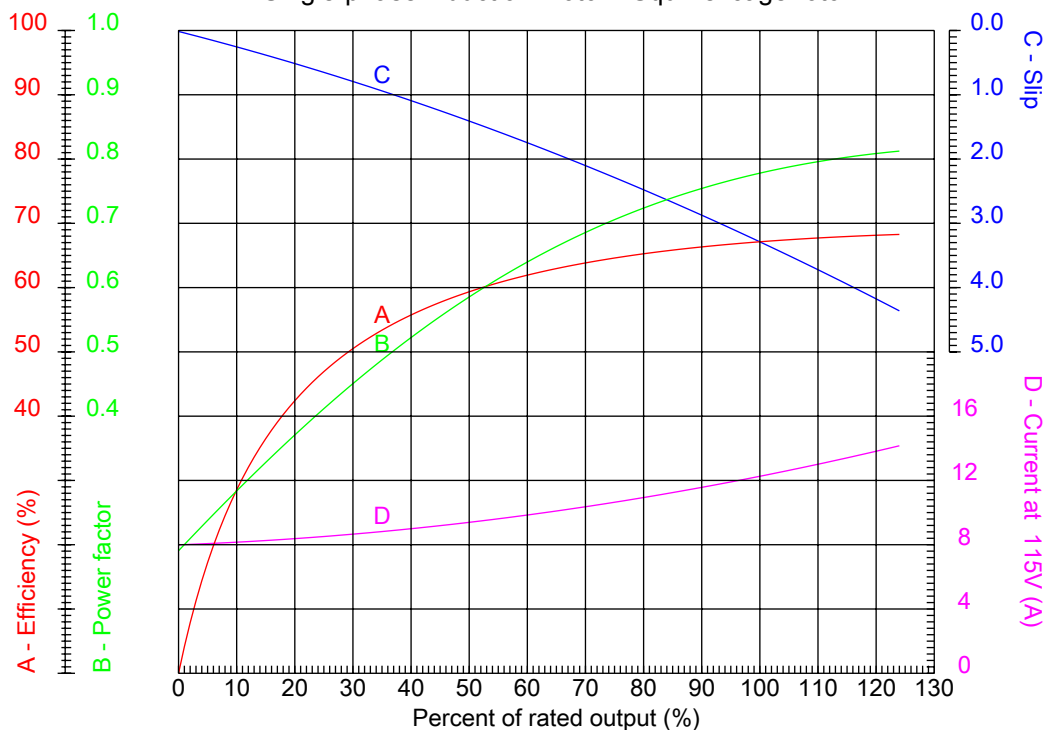
Checked



No.:

Date: 28-DEC-2012

PERFORMANCE CURVES RELATED TO RATED OUTPUT
Single-phase induction motor - Squirrel cage rotor



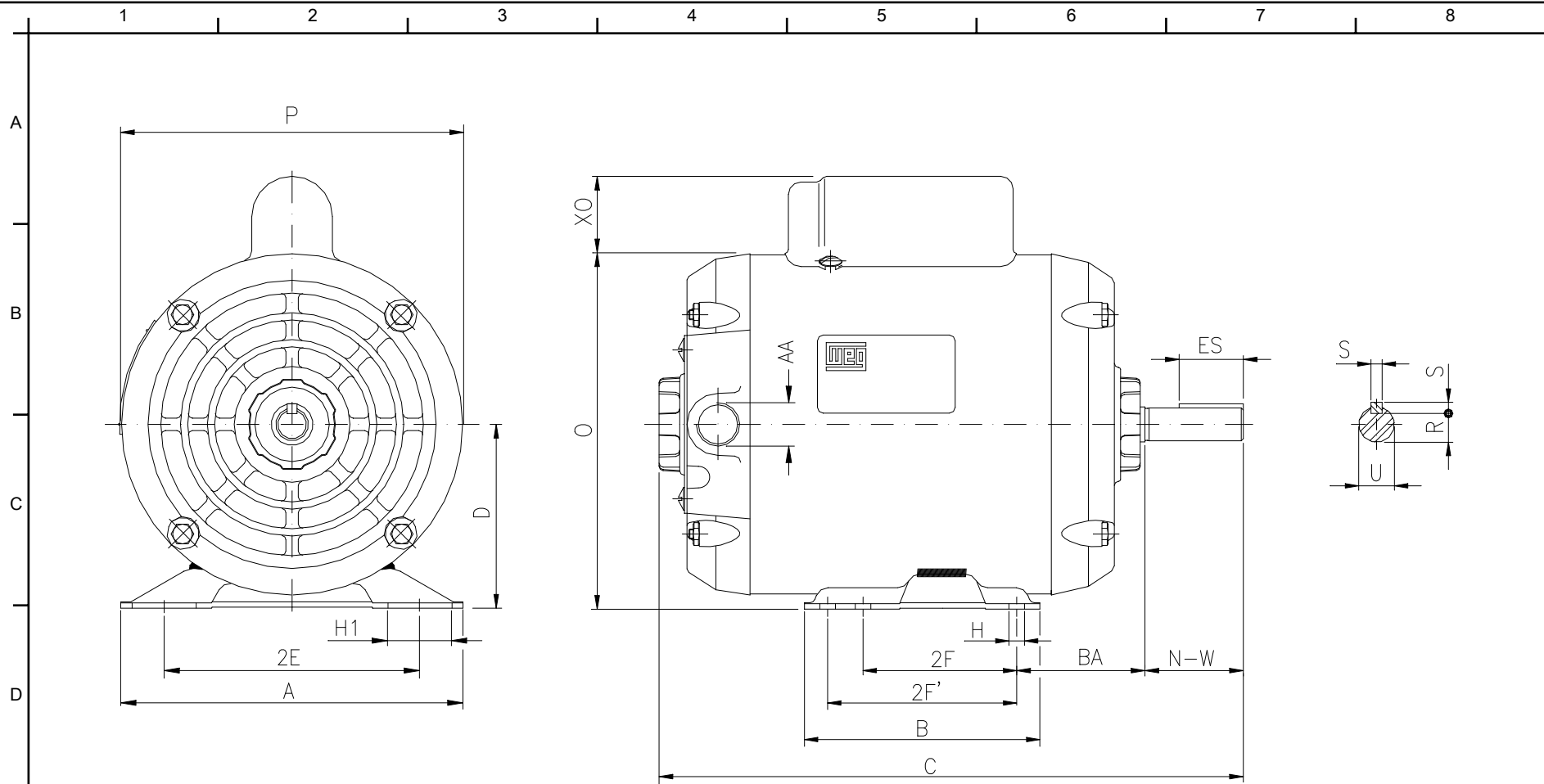
Customer :
Product line : Compressor Duty : Single-Phase - ODP

Frame	: B56	Locked rotor current (I _l /I _n)	: 5.6
Output	: 1 HP	Duty cycle	: COMPRESSOR
Frequency	: 60 Hz	Service factor	: 1.00 (1.00 at 208V)
Full load speed	: 3480	Design	: ---
Voltage	: 115/208-230 V	Locked rotor torque	: 180 %
Rated current	: 12.2/6.10-6.10 A	Breakdown torque	: 250 %
Insulation class	: B		

Notes:

Performed by

Checked



Notes:

Performed by:

Checked:

Customer:

2E	2F	H	BA	A
4.874	3.000	0.342	2.748	6.535
B	C	D	J	O
4.016	11.102	3.500	1.220	6.771
P	ES	S	N-W	U
6.496	1.102	0.187	1.874	0.6250
R	AA			
0.517	NPT 1/2"			

Compressor Duty : Single-Phase - ODP

Single-phase induction motor
Frame B56 - IP21

28-DEC-2012

