



No.:

Date: 28-DEC-2012

Customer :

TECHNICAL PROPOSAL

Single-phase induction motor - Squirrel cage rotor

Product line : Compressor Duty : Single-Phase - ODP

Catalog Number : 00236OS1BCDD56

List Price : \$372

Notes:

Performed by:

Checked:



No.:

Date: 28-DEC-2012

DATA SHEET

Single-phase induction motor - Squirrel cage rotor

Customer :
Product line : Compressor Duty : Single-Phase - ODP

Frame : D56
Output : 2 HP
Frequency : 60 Hz
Poles : 2
Full load speed : 3440
Slip : 4.44 %
Voltage : 115/208-230 V
Rated current : 22.0/12.0-11.0 A
Locked rotor current : 125/62.7 A
Locked rotor current (I_L/I_n) : 5.7
No-load current : 11.0/5.50 A
Full load torque : 3.01 lb.ft
Locked rotor torque : 210 %
Breakdown torque : 190 %
Design : ---
Insulation class : B
Temperature rise : 80 K
Locked rotor time : 6 s (hot)
Service factor : 1.00 (1.00 at 208V)
Duty cycle : COMPRESSOR
Ambient temperature : -20°C - +40°C
Altitude : 1000
Degree of Protection : IP21
Approximate weight : 38 lb
Moment of inertia : 0.04983 sq.ft.lb
Noise level : ---

	D.E.	N.D.E.	Load	Power factor	Efficiency (%)
Bearings	6204 ZZ	6203 ZZ	100%	0.84	70.0
Regreasing interval	---	---	75%	0.77	70.0
Grease amount	---	---	50%	0.67	67.0

Notes:

Performed by

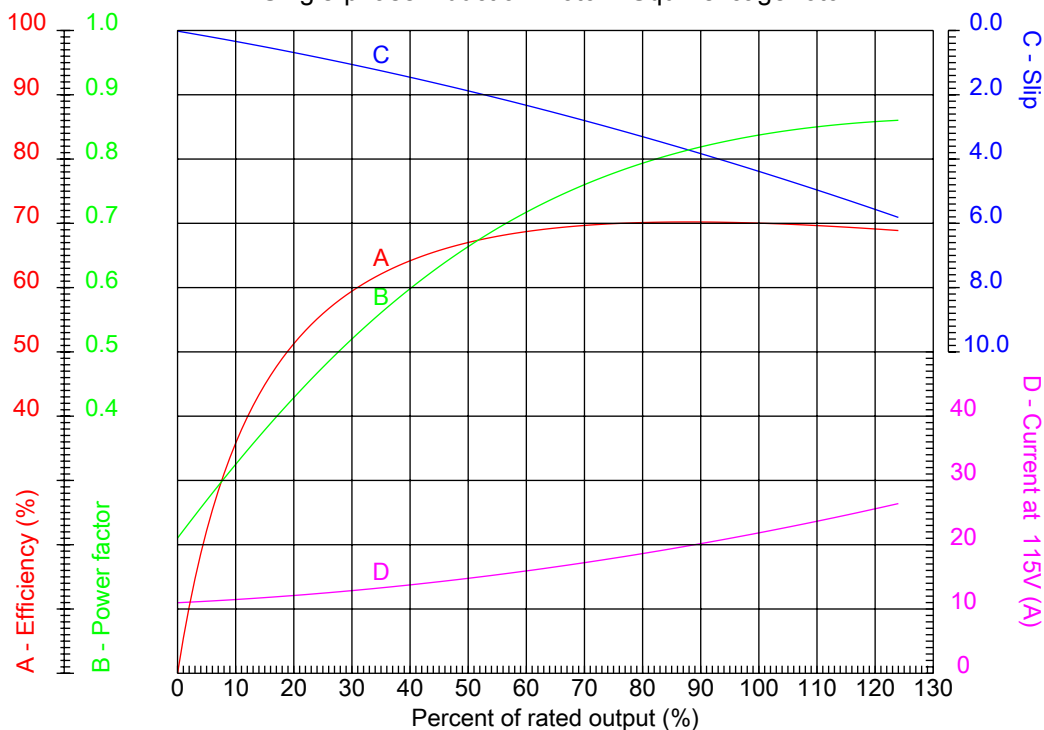
Checked



No.:

Date: 28-DEC-2012

PERFORMANCE CURVES RELATED TO RATED OUTPUT
Single-phase induction motor - Squirrel cage rotor



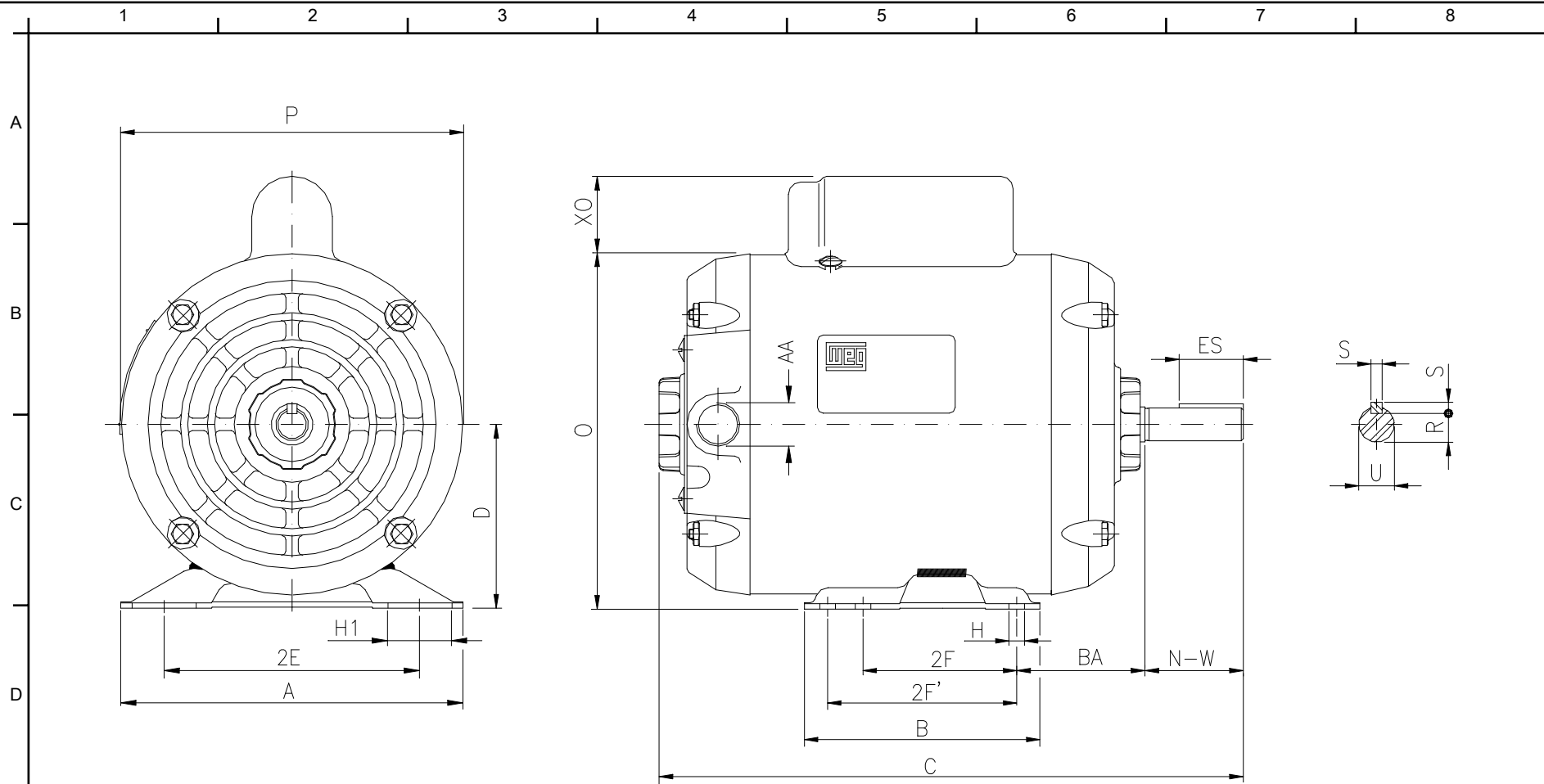
Customer :
Product line : Compressor Duty : Single-Phase - ODP

Frame	: D56	Locked rotor current (I _l /I _n)	: 5.7
Output	: 2 HP	Duty cycle	: COMPRESSOR
Frequency	: 60 Hz	Service factor	: 1.00 (1.00 at 208V)
Full load speed	: 3440	Design	: ---
Voltage	: 115/208-230 V	Locked rotor torque	: 210 %
Rated current	: 22.0/12.0-11.0 A	Breakdown torque	: 190 %
Insulation class	: B		

Notes:

Performed by

Checked



Notes:

Performed by:

Checked:

Customer:

2E 4.874	2F 3.000	H 0.342	BA 2.748	A 6.535
B 4.016	C 12.283	D 3.500	G 3.04	J 1.220
O 6.772	P 6.496	ES 1.102	S 0.187	N-W 1.874
U 0.6250	R 0.517	AA NPT 1/2"		

Compressor Duty : Single-Phase - ODP

Single-phase induction motor
Frame D56 - IP21

28-DEC-2012

