



No.:

Date: 26-DEC-2012

Customer :

TECHNICAL PROPOSAL

Three-phase induction motor - Squirrel cage rotor

Product line : Close Coupled Pump: Three-Phase - W22 "JM" Type - TEFC - NEMA Premium

Catalog Number : 00336ET3H182JM-W22

List Price : \$918

Notes:

Performed by:

Checked:



No.:

Date: 26-DEC-2012

DATA SHEET

Three-phase induction motor - Squirrel cage rotor

Customer :
Product line : Close Coupled Pump: Three-Phase - W22 "JM" Type - TEFC - NEMA Premium

Frame : 182JM
Output : 3 HP
Frequency : 60 Hz
Poles : 2
Full load speed : 3510
Slip : 2.50 %
Voltage : 575 V
Rated current : 2.90 A
Locked rotor current : 24.1 A
Locked rotor current (I_L/I_n) : 8.3
No-load current : 1.12 A
Full load torque : 4.43 lb.ft
Locked rotor torque : 240 %
Breakdown torque : 380 %
Design : B
Insulation class : F
Temperature rise : 80 K
Locked rotor time : 41 s (hot)
Service factor : 1.25
Duty cycle : S1
Ambient temperature : -20°C - +40°C
Altitude : 1000
Degree of Protection : IP55
Approximate weight : 88 lb
Moment of inertia : 0.18889 sq.ft.lb
Noise level : 69 dB(A)

	D.E.	N.D.E.	Load	Power factor	Efficiency (%)
Bearings	6307 ZZ	6206 ZZ	100%	0.88	86.5
Regreasing interval	---	---	75%	0.84	86.5
Grease amount	---	---	50%	0.75	82.5

Notes:

Performed by

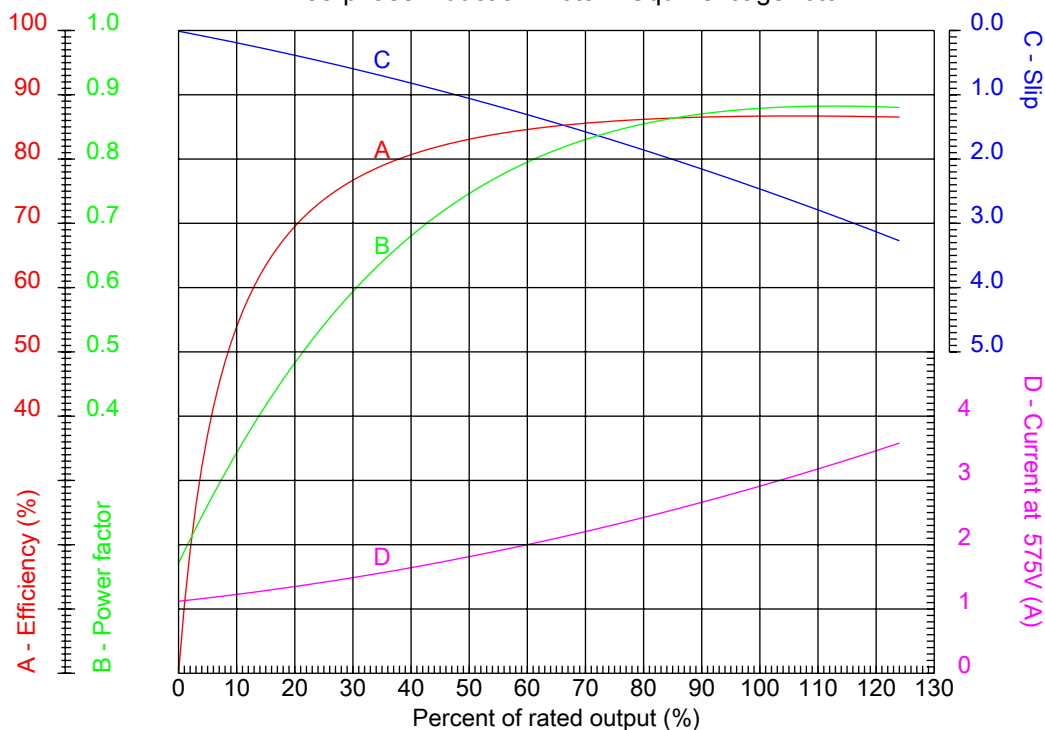
Checked



No.:

Date: 26-DEC-2012

PERFORMANCE CURVES RELATED TO RATED OUTPUT Three-phase induction motor - Squirrel cage rotor



Customer :
Product line : Close Coupled Pump: Three-Phase - W22 "JM" Type - TEFC - NEMA Premium

Frame : 182JM	Locked rotor current (I _L /I _n) : 8.3
Output : 3 HP	Duty cycle : S1
Frequency : 60 Hz	Service factor : 1.25
Full load speed : 3510	Design : B
Voltage : 575 V	Locked rotor torque : 240 %
Rated current : 2.90 A	Breakdown torque : 380 %
Insulation class : F	

Notes:

Performed by

Checked

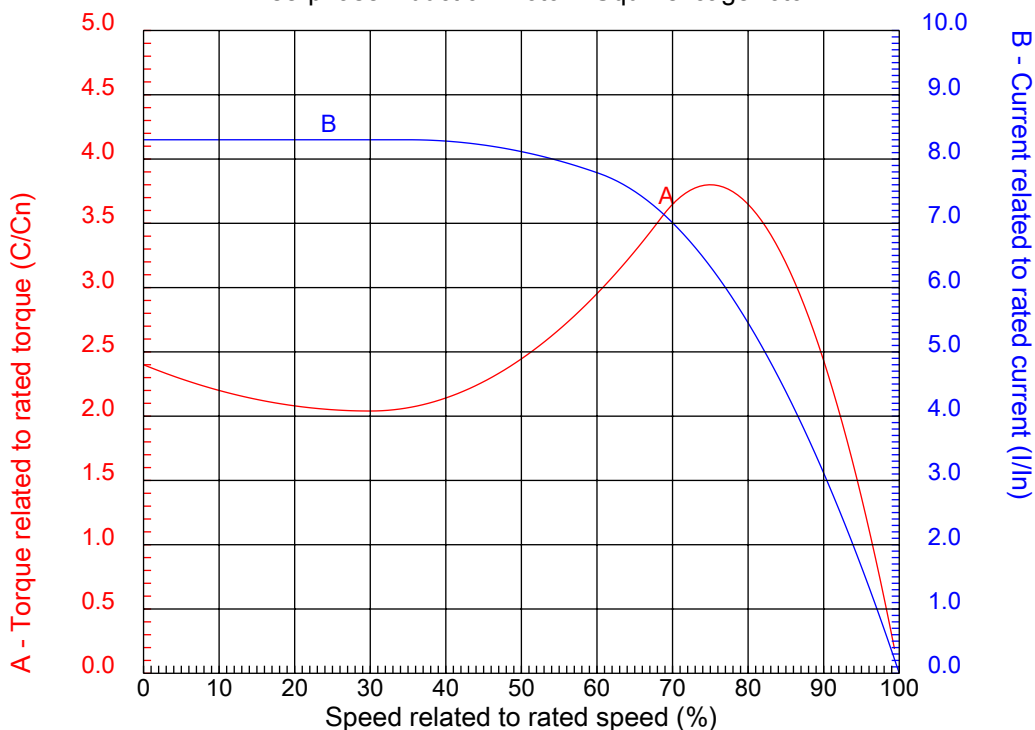


No.:

Date: 26-DEC-2012

CHARACTERISTIC CURVES RELATED TO SPEED

Three-phase induction motor - Squirrel cage rotor



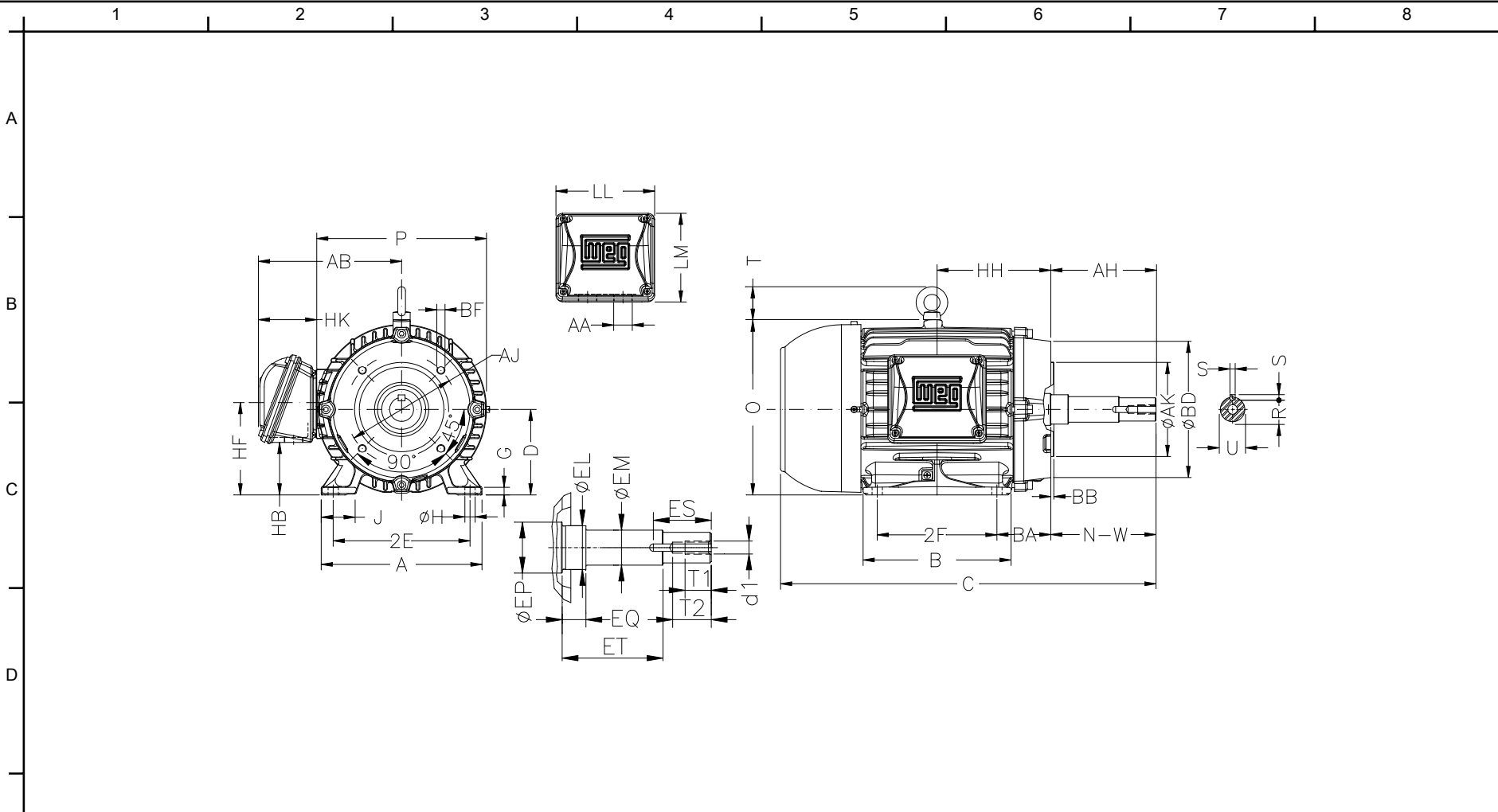
Customer :
Product line : Close Coupled Pump: Three-Phase - W22 "JM" Type - TEFC - NEMA Premium

Frame	: 182JM	Locked rotor current (I _l /I _n)	: 8.3
Output	: 3 HP	Duty cycle	: S1
Frequency	: 60 Hz	Service factor	: 1.25
Full load speed	: 3510	Design	: B
Voltage	: 575 V	Locked rotor torque	: 240 %
Rated current	: 2.90 A	Breakdown torque	: 380 %
Insulation class	: F		

Notes:

Performed by

Checked



Notes:

2E 7.500	J 1.594	A 8.661	P 8.740	AB 7.559
2F 4.500	B 5.945	BA 2.756	D 4.500	G 0.394
O 9.343	T 1.772	HD 11.115	H 0.406	AA NPT 1"
ER 4.258	EQ 0.630	ET 2.880	U 0.874	EM 1.000
EL 1.250	EP 1.376	ES 1.575	t1 0.748	t2 1.102
C 15.996	Flange FC-149	AJ 5.874	AK 4.500	BD 6.496
BF UNC 3/8"x16	BB 0.157	BC ---	AH 4.258	

Performed by:

Checked:

Customer:

Close Coupled Pump: Three-Phase - W22 "JM" Type - TEFC - NEMA Premium

Three-phase induction motor
Frame 182JM - IP55

26-DEC-2012

