



No.:

Date: 27-DEC-2012

Customer :

TECHNICAL PROPOSAL

Three-phase induction motor - Squirrel cage rotor

Product line : Close Coupled Pump: Three-Phase - W22 "JM" Type - TEFC - NEMA Premium

Catalog Number : 01536ET3H215JM-W22

List Price : \$2,058

Notes:

Performed by:

Checked:



No.:

Date: 27-DEC-2012

## DATA SHEET

### Three-phase induction motor - Squirrel cage rotor

Customer :  
 Product line : Close Coupled Pump: Three-Phase - W22 "JM" Type - TEFC - NEMA Premium

Frame : 215JM  
 Output : 15 HP  
 Frequency : 60 Hz  
 Poles : 2  
 Full load speed : 3510  
 Slip : 2.50 %  
 Voltage : 575 V  
 Rated current : 13.6 A  
 Locked rotor current : 103 A  
 Locked rotor current (I<sub>L</sub>/I<sub>n</sub>) : 7.6  
 No-load current : 4.92 A  
 Full load torque : 22.1 lb.ft  
 Locked rotor torque : 240 %  
 Breakdown torque : 280 %  
 Design : B  
 Insulation class : F  
 Temperature rise : 80 K  
 Locked rotor time : 14 s (hot)  
 Service factor : 1.25  
 Duty cycle : S1  
 Ambient temperature : -20°C - +40°C  
 Altitude : 1000  
 Degree of Protection : IP55  
 Approximate weight : 163 lb  
 Moment of inertia : 0.63620 sq.ft.lb  
 Noise level : 72 dB(A)

	D.E.	N.D.E.	Load	Power factor	Efficiency (%)
Bearings	6309 Z-C3	6207 ZZ	100%	0.89	91.0
Regreasing interval	19000 h	---	75%	0.85	91.0
Grease amount	13 g	---	50%	0.76	90.2

Notes:

Performed by

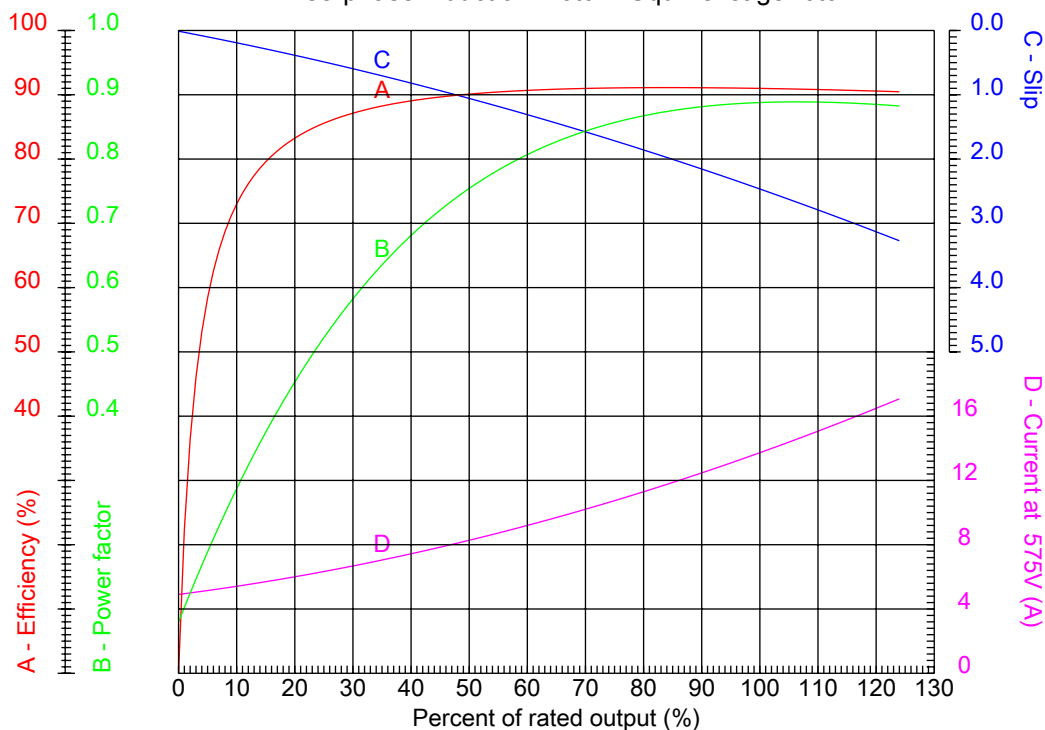
Checked



No.:

Date: 27-DEC-2012

### PERFORMANCE CURVES RELATED TO RATED OUTPUT Three-phase induction motor - Squirrel cage rotor



Customer :  
Product line : Close Coupled Pump: Three-Phase - W22 "JM" Type - TEFC - NEMA Premium

Frame : 215JM	Locked rotor current (I <sub>l</sub> /I <sub>n</sub> ) : 7.6
Output : 15 HP	Duty cycle : S1
Frequency : 60 Hz	Service factor : 1.25
Full load speed : 3510	Design : B
Voltage : 575 V	Locked rotor torque : 240 %
Rated current : 13.6 A	Breakdown torque : 280 %
Insulation class : F	

Notes:

Performed by

Checked

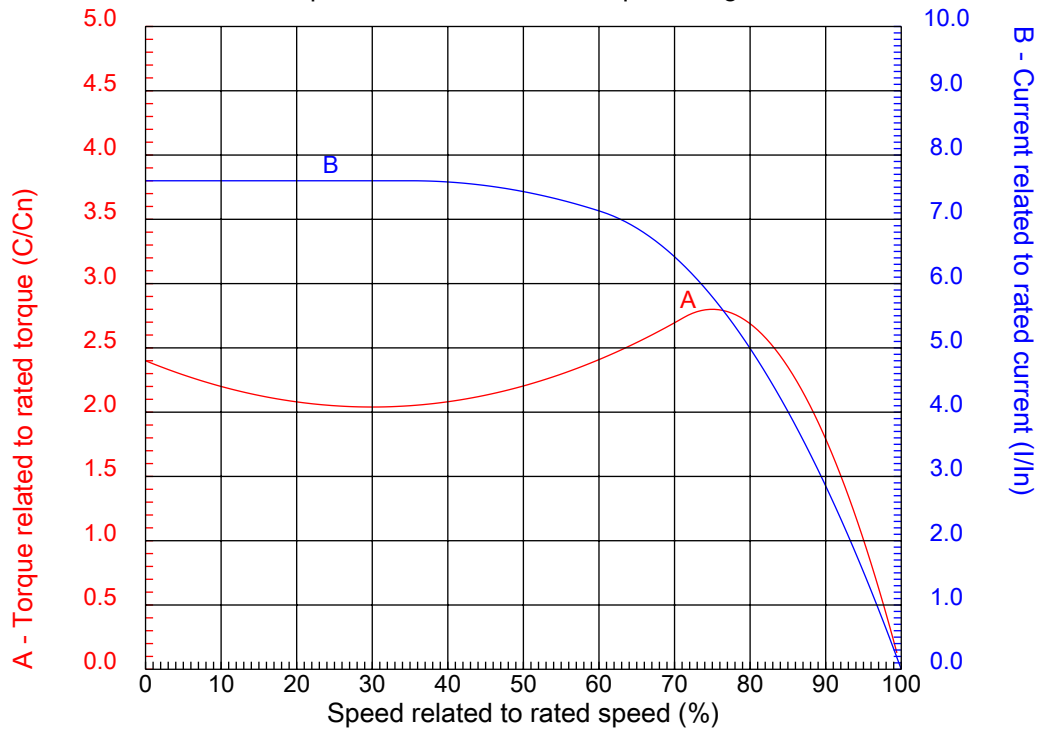


No.:

Date: 27-DEC-2012

### CHARACTERISTIC CURVES RELATED TO SPEED

Three-phase induction motor - Squirrel cage rotor



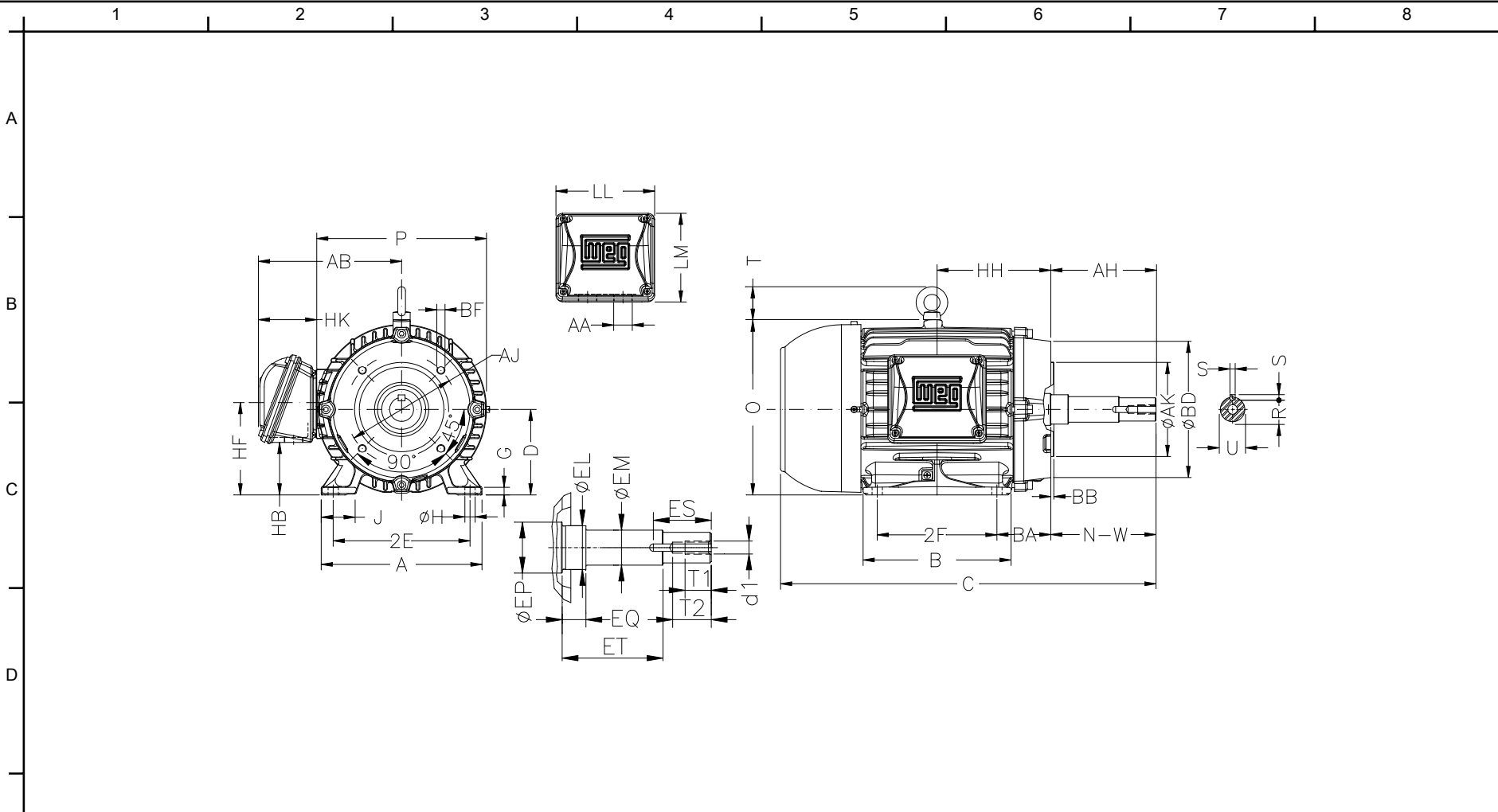
Customer :  
Product line : Close Coupled Pump: Three-Phase - W22 "JM" Type - TEFC - NEMA Premium

Frame	: 215JM	Locked rotor current (I <sub>l</sub> /I <sub>n</sub> )	: 7.6
Output	: 15 HP	Duty cycle	: S1
Frequency	: 60 Hz	Service factor	: 1.25
Full load speed	: 3510	Design	: B
Voltage	: 575 V	Locked rotor torque	: 240 %
Rated current	: 13.6 A	Breakdown torque	: 280 %
Insulation class	: F		

Notes:

Performed by

Checked



Notes:

2E 8.500	J 1.789	A 9.764	P 10.236	AB 8.583
2F 7.000	K 2.165	B 8.858	BA 3.500	D 5.250
G 0.646	O 10.841	T 1.772	HD 12.613	H 0.410
AA NPT 1"	ER 4.258	EQ 0.630	ET 2.880	U 0.874
EM 1.000	EL 1.250	EP 1.770	ES 1.654	t1 0.748
t2 1.102	C 20.174	Flange FC-184	AJ 7.252	AK 8.500
BD 8.858	BF UNC 1/2"x13	BB 0.248	BC ---	AH 4.258

Performed by:

Checked:

Customer:

Close Coupled Pump: Three-Phase - W22 "JM" Type - TEFC - NEMA Premium

Three-phase induction motor  
Frame 215JM - IP55

27-DEC-2012

