



No.:

Date: 27-DEC-2012

Customer :

TECHNICAL PROPOSAL

Three-phase induction motor - Squirrel cage rotor

Product line : Three-Phase: W22 IEEE-841™ Petrochem Motors - NEMA Premium® Efficiency

Catalog Number : 06012ST3QIE404TC-W22

List Price : \$12,315

Notes:

Performed by:

Checked:



No.:

Date: 27-DEC-2012

DATA SHEET

Three-phase induction motor - Squirrel cage rotor

Customer :
Product line : Three-Phase: W22 IEEE-841™ Petrochem Motors - NEMA Premium® Efficiency

Frame : 404/5T
Output : 60 HP
Frequency : 60 Hz
Poles : 6
Full load speed : 1180
Slip : 1.67 %
Voltage : 460 V
Rated current : 69.5 A
Locked rotor current : 445 A
Locked rotor current (I_L/I_n) : 6.4
No-load current : 25.0 A
Full load torque : 263 lb.ft
Locked rotor torque : 200 %
Breakdown torque : 230 %
Design : B
Insulation class : F
Temperature rise : 80 K
Locked rotor time : 20 s (hot)
Service factor : 1.25
Duty cycle : S1
Ambient temperature : -20°C - +40°C
Altitude : 1000
Degree of Protection : IP55
Approximate weight : 1036 lb
Moment of inertia : 36.858 sq.ft.lb
Noise level : 68 dB(A)

	D.E.	N.D.E.	Load	Power factor	Efficiency (%)
Bearings	6316 C3	6314 C3	100%	0.86	94.5
Regreasing interval	16000 h	17000 h	75%	0.82	94.5
Grease amount	34 g	27 g	50%	0.74	94.1

Notes:

Performed by

Checked

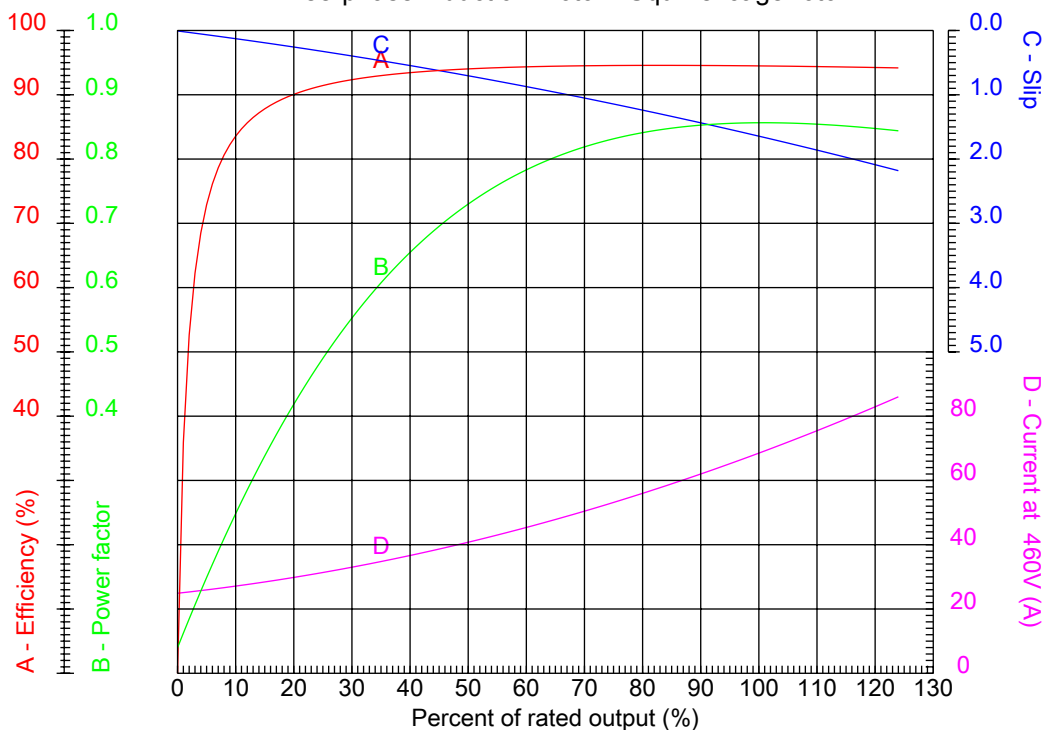


No.:

Date: 27-DEC-2012

PERFORMANCE CURVES RELATED TO RATED OUTPUT

Three-phase induction motor - Squirrel cage rotor



Customer :
Product line : Three-Phase: W22 IEEE-841™ Petrochem Motors - NEMA Premium® Efficiency

Frame : 404/5T	Locked rotor current (I _L /I _n) : 6.4
Output : 60 HP	Duty cycle : S1
Frequency : 60 Hz	Service factor : 1.25
Full load speed : 1180	Design : B
Voltage : 460 V	Locked rotor torque : 200 %
Rated current : 69.5 A	Breakdown torque : 230 %
Insulation class : F	

Notes:

Performed by

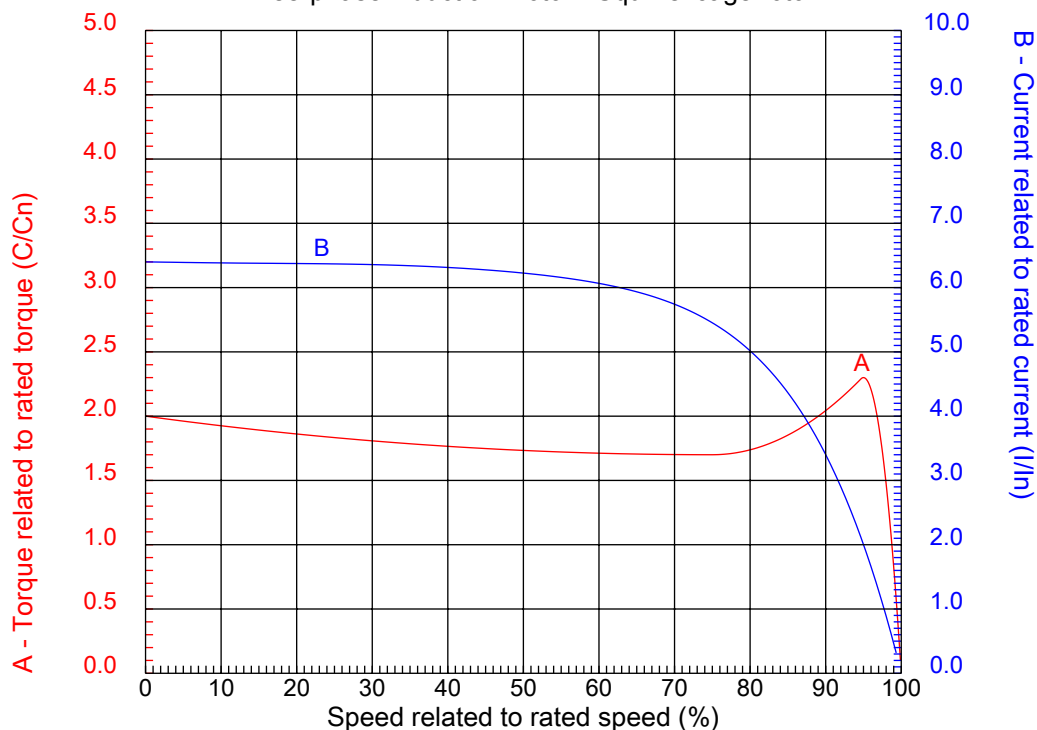
Checked



No.:

Date: 27-DEC-2012

CHARACTERISTIC CURVES RELATED TO SPEED Three-phase induction motor - Squirrel cage rotor



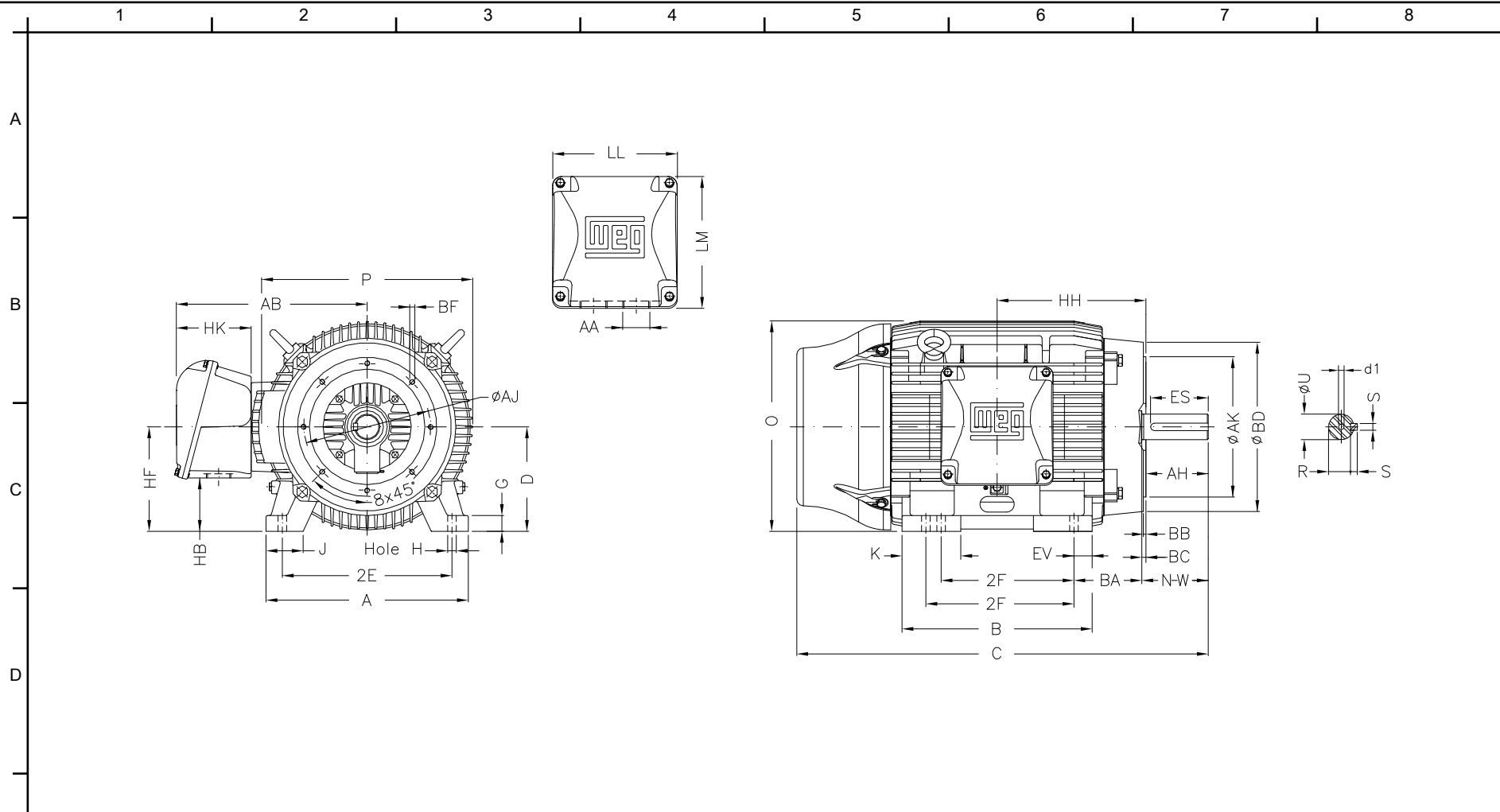
Customer :
Product line : Three-Phase: W22 IEEE-841™ Petrochem Motors - NEMA Premium® Efficiency

Frame	: 404/5T	Locked rotor current (I _l /I _n)	: 6.4
Output	: 60 HP	Duty cycle	: S1
Frequency	: 60 Hz	Service factor	: 1.25
Full load speed	: 1180	Design	: B
Voltage	: 460 V	Locked rotor torque	: 200 %
Rated current	: 69.5 A	Breakdown torque	: 230 %
Insulation class	: F		

Notes:

Performed by

Checked



					Notes:	
E	2E 15.984	J 3.937	A 19.921	P 19.134	AB 16.023	Performed by:
	2F 12.244/13.740	K 5.669	B 18.386	BA 6.625	U 2.875	Checked:
	N-W 7.250	ES 5.708	S 0.750	R 2.449	depth 0.750	Customer:
	D 10.000	G 1.811	HB 3.977	O 19.566	T 3.544	Three-Phase: W22 IEEE-841™ Petrochem Motors - NEMA Premium® Efficiency
	HD 23.110	HH 14.213	HK 6.023	H 0.810	C 39.730	
F	LL 10.590	LM 11.181	AA NPT 3"	d1 DUNC 3/4"-10	d2 DUNC 3/4"-10	
	Flange FC-279	AJ 11.000	AK 12.500	BD 15.55	BF UNC 5/8"x11	Three-phase induction motor
	BB 0.250	BC 0.250	AH 7.000			Frame 404/5T - IP55
					27-DEC-2012	