



No.:

Date: 27-DEC-2012

Customer :

TECHNICAL PROPOSAL

Three-phase induction motor - Squirrel cage rotor

Product line : Three-Phase : Explosion Proof - NEMA Premium

Catalog Number : 07536XT3H365TS

List Price : \$11,285

Notes:

Performed by:

Checked:



No.:

Date: 27-DEC-2012

DATA SHEET

Three-phase induction motor - Squirrel cage rotor

Customer :
Product line : Three-Phase : Explosion Proof - NEMA Premium

Frame : 364/5TS
Output : 75 HP
Frequency : 60 Hz
Poles : 2
Full load speed : 3560
Slip : 1.11 %
Voltage : 575 V
Rated current : 65.9 A
Locked rotor current : 461 A
Locked rotor current (I_L/I_n) : 7.0
No-load current : 17.6 A
Full load torque : 109 lb.ft
Locked rotor torque : 230 %
Breakdown torque : 260 %
Design : B
Insulation class : F
Temperature rise : 80 K
Locked rotor time : 18 s (hot)
Service factor : 1.15
Duty cycle : S1
Ambient temperature : -20°C - +40°C
Altitude : 1000
Degree of Protection : IP54
Approximate weight : 1025 lb
Moment of inertia : 9.9623 sq.ft.lb
Noise level : 85 dB(A)

| | D.E. | N.D.E. | Load | Power factor | Efficiency (%) |
|---------------------|---------|---------|------|--------------|----------------|
| Bearings | 6314 C3 | 6314 C3 | 100% | 0.89 | 94.1 |
| Regreasing interval | 3604 h | 3604 h | 75% | 0.87 | 94.1 |
| Grease amount | 27 g | 27 g | 50% | 0.81 | 93.0 |

Notes:

Performed by

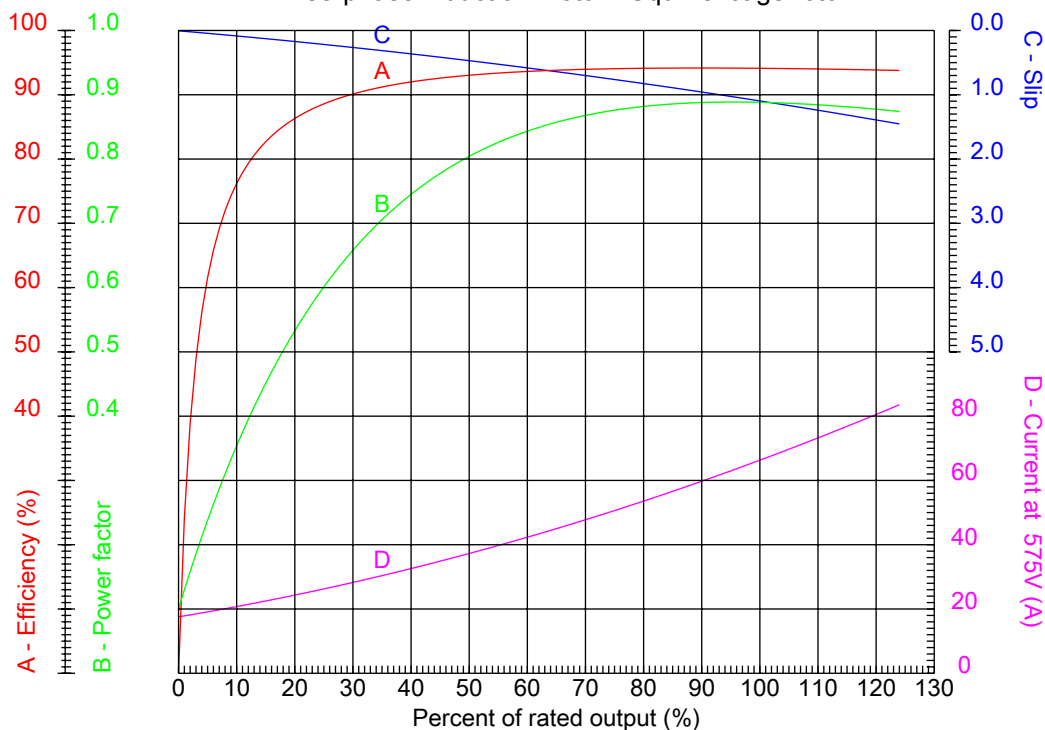
Checked



No.:

Date: 27-DEC-2012

PERFORMANCE CURVES RELATED TO RATED OUTPUT
Three-phase induction motor - Squirrel cage rotor



Customer :
Product line : Three-Phase : Explosion Proof - NEMA Premium

| | |
|------------------------|--|
| Frame : 364/5TS | Locked rotor current (I _L /I _n) : 7.0 |
| Output : 75 HP | Duty cycle : S1 |
| Frequency : 60 Hz | Service factor : 1.15 |
| Full load speed : 3560 | Design : B |
| Voltage : 575 V | Locked rotor torque : 230 % |
| Rated current : 65.9 A | Breakdown torque : 260 % |
| Insulation class : F | |

Notes:

Performed by

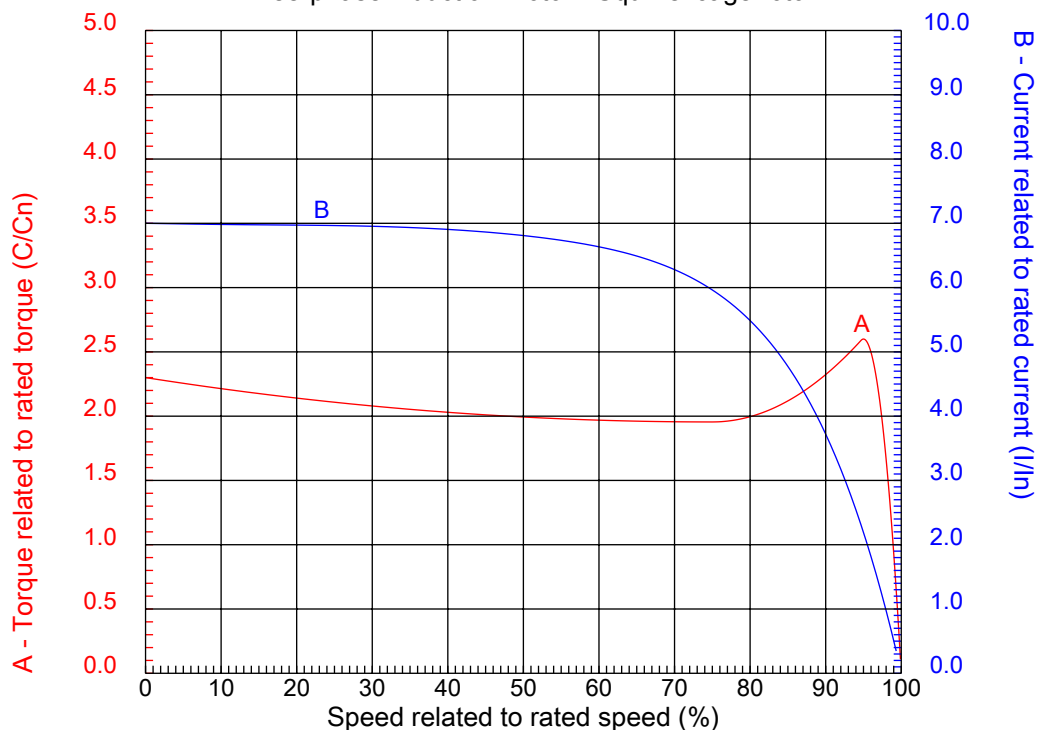
Checked



No.:

Date: 27-DEC-2012

CHARACTERISTIC CURVES RELATED TO SPEED Three-phase induction motor - Squirrel cage rotor



Customer :
Product line : Three-Phase : Explosion Proof - NEMA Premium

| | | | |
|------------------|-----------|--|---------|
| Frame | : 364/5TS | Locked rotor current (I _l /I _n) | : 7.0 |
| Output | : 75 HP | Duty cycle | : S1 |
| Frequency | : 60 Hz | Service factor | : 1.15 |
| Full load speed | : 3560 | Design | : B |
| Voltage | : 575 V | Locked rotor torque | : 230 % |
| Rated current | : 65.9 A | Breakdown torque | : 260 % |
| Insulation class | : F | | |

Notes:

Performed by

Checked

1 2 3 4 5 6 7 8

A

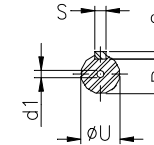
B

C

D

E

F



Notes:

Performed by:

Checked:

Customer:

Three-Phase : Explosion Proof - NEMA Premium

Three-phase induction motor
Frame 364/5TS - IP54

27-DEC-2012



| | | | | |
|------------------|--------------|---------------------|--------------------|----------------|
| 2E 14.000 | A 17.165 | 2F 11.250/12.250 | B 15.394 | BA 5.875 |
| J 3.150 | K 4.134 | P 18.583 | ES 1.968 | depth 0.500 |
| S 0.500 | N-W 3.748 | U 1.875 | R 1.591 | AB 16.654 |
| D 9.000 | G 1.480 | O 18.898 | HD 21.693 | H 0.657 |
| C 31.575 | AA NPT 3" | d1 DUNC 3/4"-10 | d2 DUNC 3/4"-10 | T 2.795 |
| Flange FD-406 | AJ 16.000 | AK 14.000 | BD 18.000 | BF 0.828 |
| BB 0.203 | | | | |