



No.:

Date: 28-DEC-2012

Customer :

TECHNICAL PROPOSAL

Three-phase induction motor - Squirrel cage rotor

Product line : Three-Phase : Explosion Proof - NEMA Premium

Catalog Number : 20018XT3G447T

List Price : \$29,397

Notes:

Performed by:

Checked:



No.:

Date: 28-DEC-2012

DATA SHEET

Three-phase induction motor - Squirrel cage rotor

Customer :
Product line : Three-Phase : Explosion Proof - NEMA Premium

Frame : 447T
Output : 200 HP
Frequency : 60 Hz
Poles : 4
Full load speed : 1780
Slip : 1.11 %
Voltage : 460 V
Rated current : 230 A
Locked rotor current : 1610 A
Locked rotor current (I_L/I_n) : 7.0
No-load current : 88.8 A
Full load torque : 582 lb.ft
Locked rotor torque : 230 %
Breakdown torque : 240 %
Design : B
Insulation class : F
Temperature rise : 80 K
Locked rotor time : 25 s (hot)
Service factor : 1.15
Duty cycle : S1
Ambient temperature : -20°C - +40°C
Altitude : 1000
Degree of Protection : IP54
Approximate weight : 2426 lb
Moment of inertia : 76.217 sq.ft.lb
Noise level : 82 dB(A)

| | D.E. | N.D.E. | Load | Power factor | Efficiency (%) |
|---------------------|---------|---------|------|--------------|----------------|
| Bearings | 6319 C3 | 6316 C3 | 100% | 0.85 | 96.2 |
| Regreasing interval | 7038 h | 8569 h | 75% | 0.80 | 96.2 |
| Grease amount | 45 g | 34 g | 50% | 0.70 | 95.8 |

Notes:

Performed by

Checked

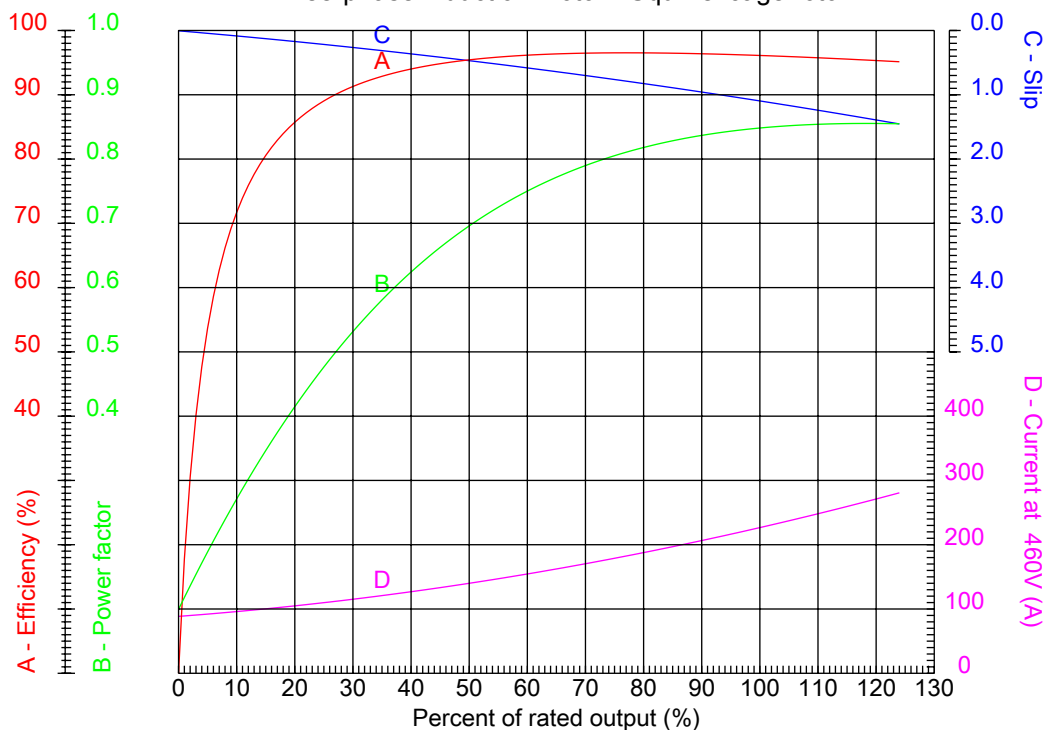


No.:

Date: 28-DEC-2012

PERFORMANCE CURVES RELATED TO RATED OUTPUT

Three-phase induction motor - Squirrel cage rotor



Customer :
Product line : Three-Phase : Explosion Proof - NEMA Premium

| | | | |
|------------------|----------|--|---------|
| Frame | : 447T | Locked rotor current (I _L /I _n) | : 7.0 |
| Output | : 200 HP | Duty cycle | : S1 |
| Frequency | : 60 Hz | Service factor | : 1.15 |
| Full load speed | : 1780 | Design | : B |
| Voltage | : 460 V | Locked rotor torque | : 230 % |
| Rated current | : 230 A | Breakdown torque | : 240 % |
| Insulation class | : F | | |

Notes:

Performed by

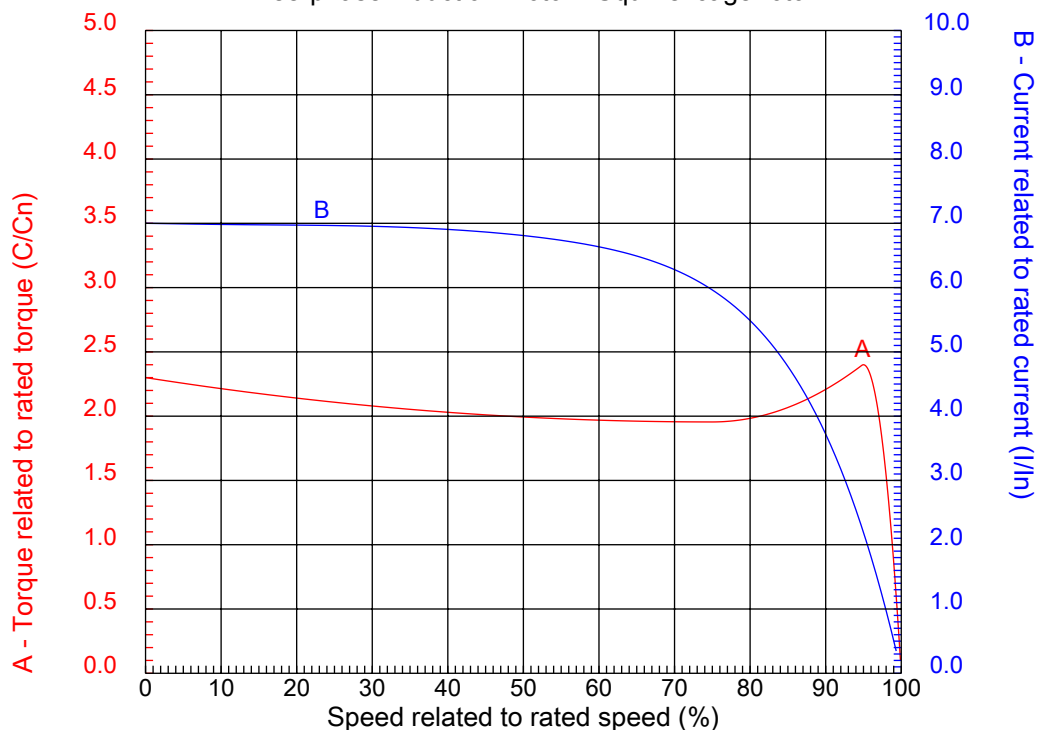
Checked



No.:

Date: 28-DEC-2012

CHARACTERISTIC CURVES RELATED TO SPEED Three-phase induction motor - Squirrel cage rotor



Customer :
Product line : Three-Phase : Explosion Proof - NEMA Premium

| | | | |
|------------------|----------|--|---------|
| Frame | : 447T | Locked rotor current (I _l /I _n) | : 7.0 |
| Output | : 200 HP | Duty cycle | : S1 |
| Frequency | : 60 Hz | Service factor | : 1.15 |
| Full load speed | : 1780 | Design | : B |
| Voltage | : 460 V | Locked rotor torque | : 230 % |
| Rated current | : 230 A | Breakdown torque | : 240 % |
| Insulation class | : F | | |

Notes:

Performed by

Checked

1 2 3 4 5 6 7 8

A

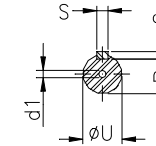
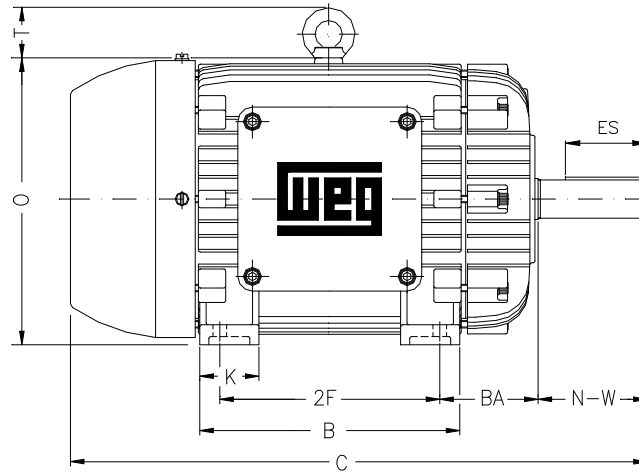
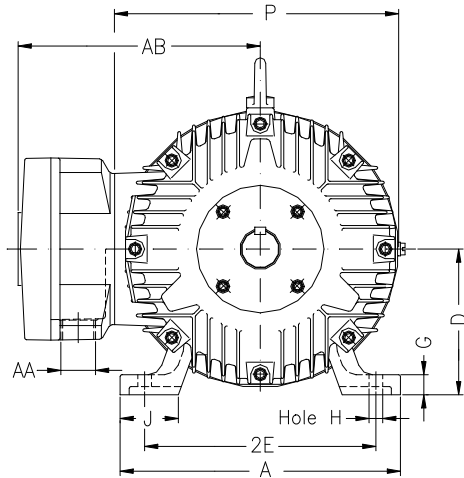
B

C

D

E

F



Notes:

Performed by:

Checked:

Customer:

Three-Phase : Explosion Proof - NEMA Premium

Three-phase induction motor
Frame 447T - IP54

28-DEC-2012



| | | | | |
|------------------|----------------|--------------------|--------------------|----------------|
| 2E 18.000 | A 21.929 | 2F 20.000 | B 23.640 | BA 7.500 |
| J 3.937 | K 5.591 | P 24.016 | ES 7.087 | depth 0.875 |
| S 0.875 | N-W 8.500 | U 3.375 | R 2.880 | AB 20.984 |
| D 11.000 | G 1.630 | O 23.622 | HD 27.165 | H 0.807 |
| C 47.339 | AA 2XNPT 3" | d1 DUNC 3/4"-10 | d2 DUNC 3/4"-10 | T 3.543 |
| Flange FD-508 | AJ 20.000 | AK 18.000 | BD 21.656 | BF 0.828 |
| BB 0.203 | | | | |