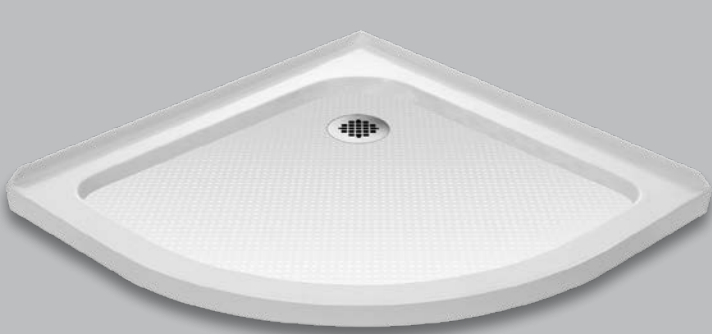




The largest selection of  
cUPC certified bases



SLIMLINE™ SHOWER BASES





**SlimLine**, a collection of low profile (2-3/4" threshold height) shower bases, offers an attractive, efficient and durable solution to transform any shower space. Incorporate a **SlimLine** base into a custom shower renovation or combine with a DreamLine shower door or shower enclosure. Add DreamLine shower backwalls for a complete shower installation or tub-to-shower replacement project. SlimLine shower bases are available in a wide range of sizes, shapes and configurations.

## 2-WALL CORNER BASES

### DOUBLE THRESHOLD



Sizes available (inches):

32 x 32 | 36 x 36 | 34 x 48\* | 36 x 48\*  
36 x 60\*

\*Available in left, right and center drain configuration

### NEO - ANGLE



Sizes available (inches):

36 x 36 | 38 x 38 | 40 x 40 | 42 x 42

### ROUND



Sizes available (inches):

33 x 33 | 36 x 36 | 38 x 38

## 3-WALL ALCOVE BASES

### SINGLE THRESHOLD



Sizes available (inches):

32 x 32 | 36 x 36 | 36 x 48 | 30 x 60\*  
32 x 60\* | 34 x 60\* | 36 x 60\*

\*Available in left, right and center drain configuration

- High quality scratch and stain resistant acrylic-capped ABS
- Slip-resistant textured floor pattern for safe bathing
- Integrated tile flange for easy installation and waterproofing
- Fiberglass reinforcement for durability
- Standard 3-1/4" drain opening (drain not included)
- cUPC certified

## ADVANCED MULTI LAYERED DESIGN



- 1 HIGH GLOSS WHITE ACRYLIC WITH SLIP RESISTANT TEXTURE
- 2 FIBERGLASS REINFORCEMENT
- 3 STRUCTURAL SUPPORT FOUNDATION



Visit [PARTNER PORTAL](#) for the latest dealer news and updates

Visit [WWW.BATHAUTHORITY.COM](http://WWW.BATHAUTHORITY.COM) for detailed product information  
Tel: 866.731.8378 | Fax: 866.227.9245 | [sales@bathauthority.com](mailto:sales@bathauthority.com)

