



No.:

Date: 24-DEC-2012

Customer :

TECHNICAL PROPOSAL

Three-phase induction motor - Squirrel cage rotor

Product line : Three-Phase : NEMA 56 Frames - TEFC

Catalog Number : 00218ES3EF56

List Price : \$392

Notes:

Performed by:

Checked:



No.:

Date: 24-DEC-2012

DATA SHEET

Three-phase induction motor - Squirrel cage rotor

Customer :
Product line : Three-Phase : NEMA 56 Frames - TEFC

Frame : F56H
Output : 2 HP
Frequency : 60 Hz
Poles : 4
Full load speed : 1740
Slip : 3.33 %
Voltage : 208-230/460 V
Rated current : 6.15-5.80/2.90 A
Locked rotor current : 49.9/24.9 A
Locked rotor current (I_L/I_n) : 8.6
No-load current : 3.40/1.70 A
Full load torque : 5.96 lb.ft
Locked rotor torque : 300 %
Breakdown torque : 320 %
Design : A
Insulation class : F
Temperature rise : 80 K
Locked rotor time : 10 s (hot)
Service factor : 1.15 (1.00 at 208V)
Duty cycle : S1
Ambient temperature : -20°C - +40°C
Altitude : 1000
Degree of Protection : IP55
Approximate weight : 45 lb
Moment of inertia : 0.20408 sq.ft.lb
Noise level : ---

	D.E.	N.D.E.	Load	Power factor	Efficiency (%)
Bearings	6204 ZZ	6203 ZZ	100%	0.79	82.0
Regreasing interval	---	---	75%	0.71	81.0
Grease amount	---	---	50%	0.59	77.5

Notes:

Performed by

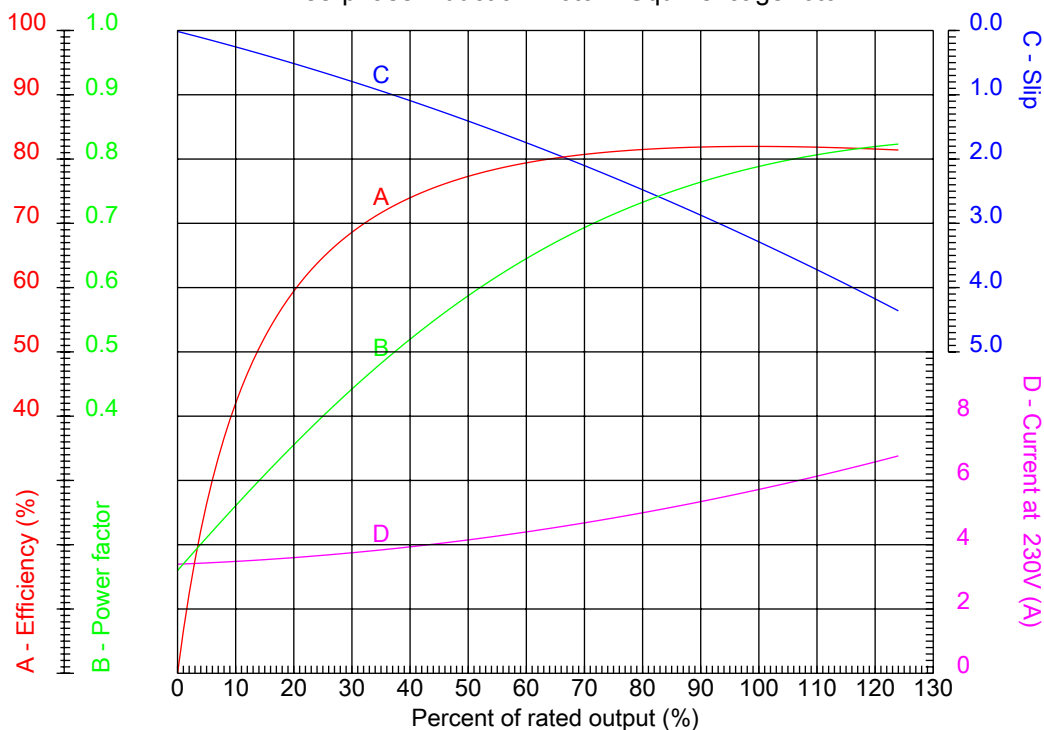
Checked



No.:

Date: 24-DEC-2012

PERFORMANCE CURVES RELATED TO RATED OUTPUT
Three-phase induction motor - Squirrel cage rotor



Customer :
Product line : Three-Phase : NEMA 56 Frames - TEFC

Frame	: F56H	Locked rotor current (I _l /I _n)	: 8.6
Output	: 2 HP	Duty cycle	: S1
Frequency	: 60 Hz	Service factor	: 1.15 (1.00 at 208V)
Full load speed	: 1740	Design	: A
Voltage	: 208-230/460 V	Locked rotor torque	: 300 %
Rated current	: 6.15-5.80/2.90 A	Breakdown torque	: 320 %
Insulation class	: F		

Notes:

Performed by

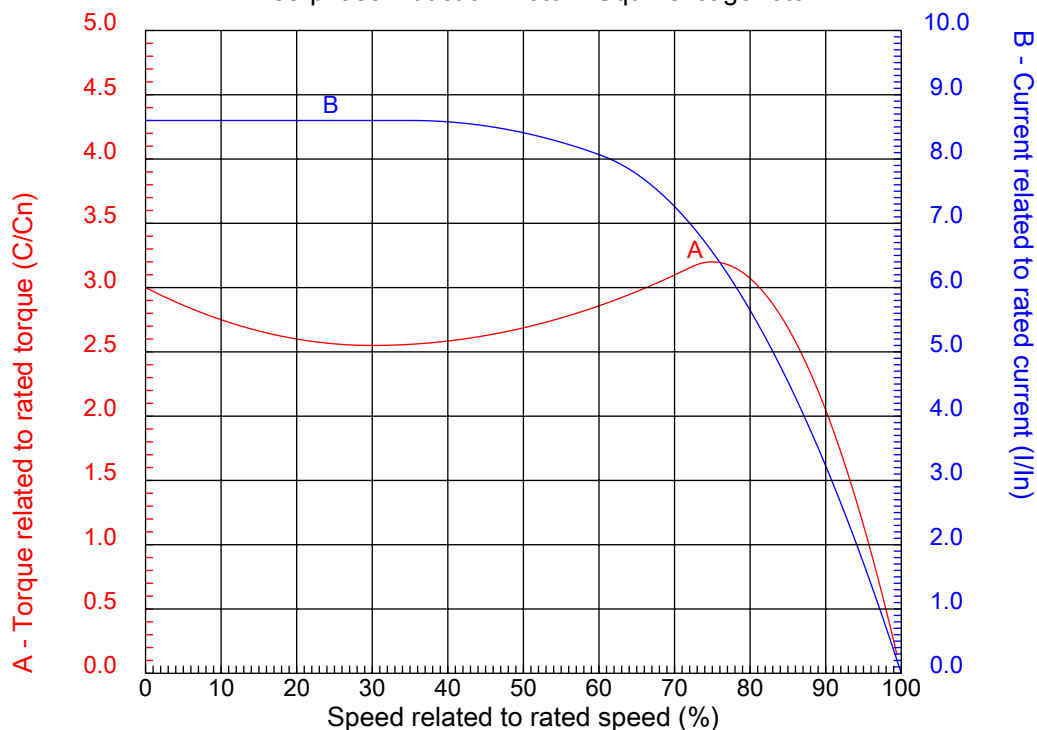
Checked



No.:

Date: 24-DEC-2012

CHARACTERISTIC CURVES RELATED TO SPEED Three-phase induction motor - Squirrel cage rotor



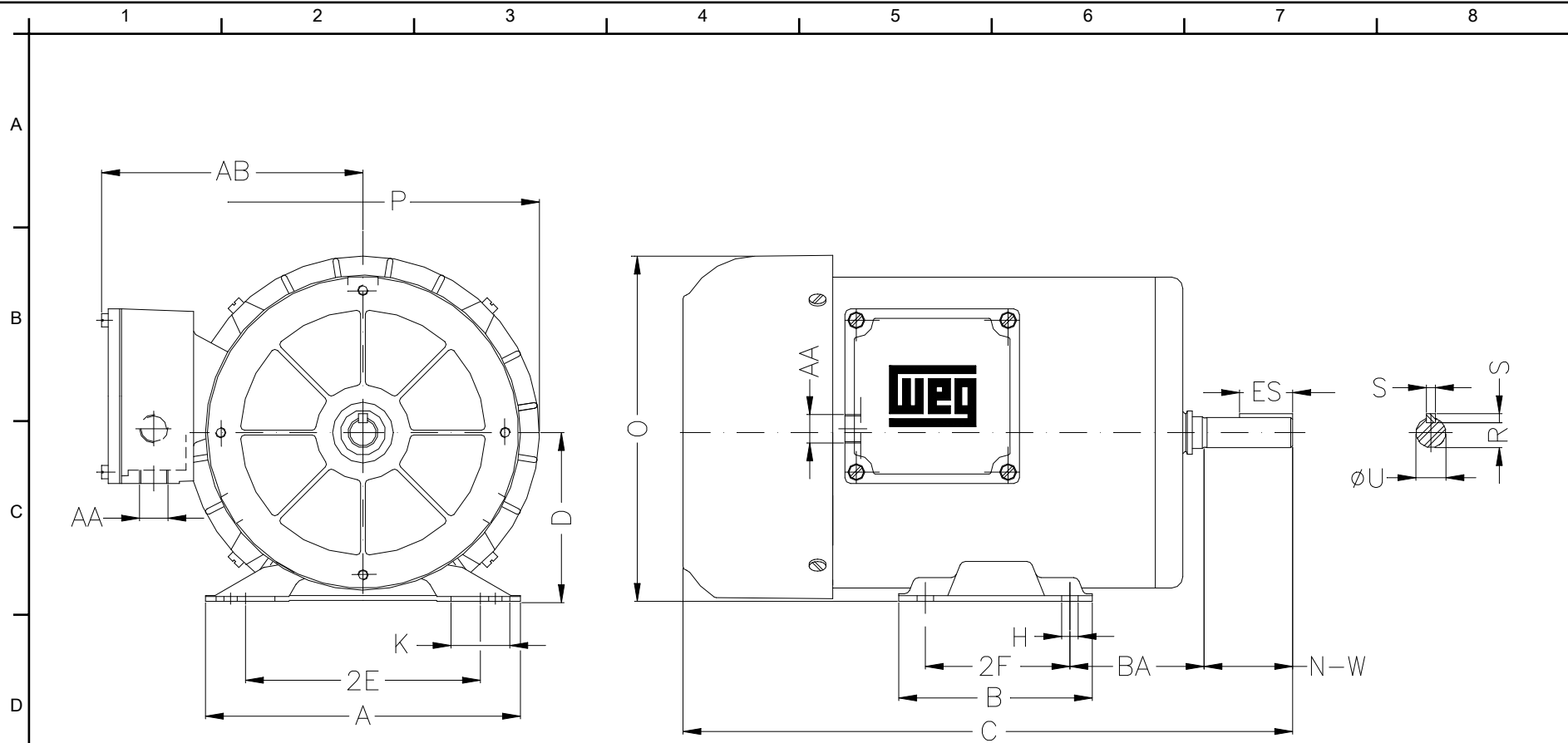
Customer :
Product line : Three-Phase : NEMA 56 Frames - TEFC

Frame	: F56H	Locked rotor current (I _l /I _n)	: 8.6
Output	: 2 HP	Duty cycle	: S1
Frequency	: 60 Hz	Service factor	: 1.15 (1.00 at 208V)
Full load speed	: 1740	Design	: A
Voltage	: 208-230/460 V	Locked rotor torque	: 300 %
Rated current	: 6.15-5.80/2.90 A	Breakdown torque	: 320 %
Insulation class	: F		

Notes:

Performed by

Checked



Notes:

Performed by:

Checked:

Customer:

Three-Phase : NEMA 56 Frames - TEFC

Three-phase induction motor
Frame F56H - IP55

24-DEC-2012



2E 4.874	2F 3.000	H 0.343	BA 2.748	A 6.535
B 6.496	C 13.464	D 3.500	J 1.220	K 5.000
O 7.165	P 7.323	S 0.187	ES 1.102	R 0.517
N-W 1.874	U 0.6250	AB 5.433	AA 2XNPT 1/2"	Flange FC-149
AJ 5.874	AK 4.500	BD 6.535	BF UNC 3/8"x16-2B	BB 0.157
BC ---	AH 2.063			