



No.:

Date: 31-DEC-2012

Customer :

TECHNICAL PROPOSAL

Three-phase induction motor - Squirrel cage rotor

Product line : W22 Cooling Tower Motors: NEMA Premium

Catalog Number : 00112ET3PCT145TF1-W2

List Price : \$728

Notes:

Performed by:

Checked:



No.:

Date: 31-DEC-2012

DATA SHEET

Three-phase induction motor - Squirrel cage rotor

Customer :
 Product line : W22 Cooling Tower Motors: NEMA Premium

Frame : 145T
 Output : 1 HP
 Frequency : 60 Hz
 Poles : 6
 Full load speed : 1150
 Slip : 4.17 %
 Voltage : 200 V
 Rated current : 3.97 A
 Locked rotor current : 24.6 A
 Locked rotor current (I_L/I_n) : 6.2
 No-load current : 2.50 A
 Full load torque : 4.51 lb.ft
 Locked rotor torque : 300 %
 Breakdown torque : 300 %
 Design : B
 Insulation class : F
 Temperature rise : 80 K
 Locked rotor time : 28 s (hot)
 Service factor : 1.25
 Duty cycle : S1
 Ambient temperature : -20°C - +40°C
 Altitude : 1000
 Degree of Protection : IP55
 Approximate weight : 53 lb
 Moment of inertia : 0.15947 sq.ft.lb
 Noise level : 49 dB(A)

	D.E.	N.D.E.	Load	Power factor	Efficiency (%)
Bearings	6205 ZZ	6204 ZZ	100%	0.66	82.5
Regreasing interval	---	---	75%	0.57	82.0
Grease amount	---	---	50%	0.45	77.0

Notes:

Performed by

Checked

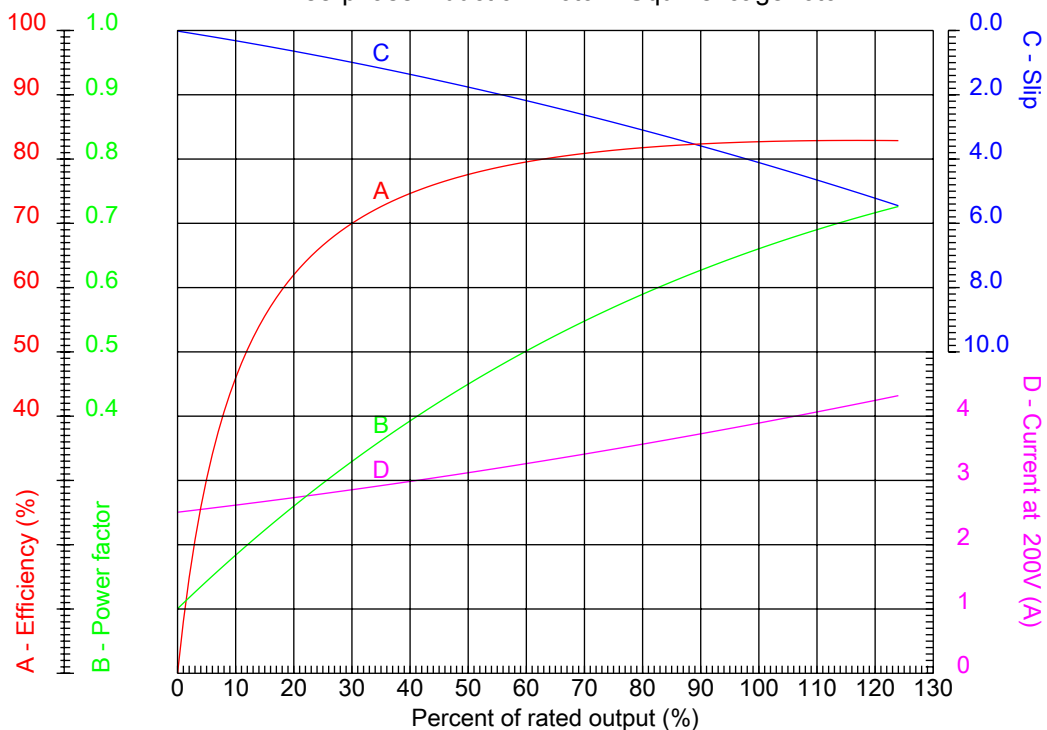


No.:

Date: 31-DEC-2012

PERFORMANCE CURVES RELATED TO RATED OUTPUT

Three-phase induction motor - Squirrel cage rotor



Customer :
Product line : W22 Cooling Tower Motors: NEMA Premium

Frame : 145T	Locked rotor current (I _l /I _n) : 6.2
Output : 1 HP	Duty cycle : S1
Frequency : 60 Hz	Service factor : 1.25
Full load speed : 1150	Design : B
Voltage : 200 V	Locked rotor torque : 300 %
Rated current : 3.97 A	Breakdown torque : 300 %
Insulation class : F	

Notes:

Performed by

Checked

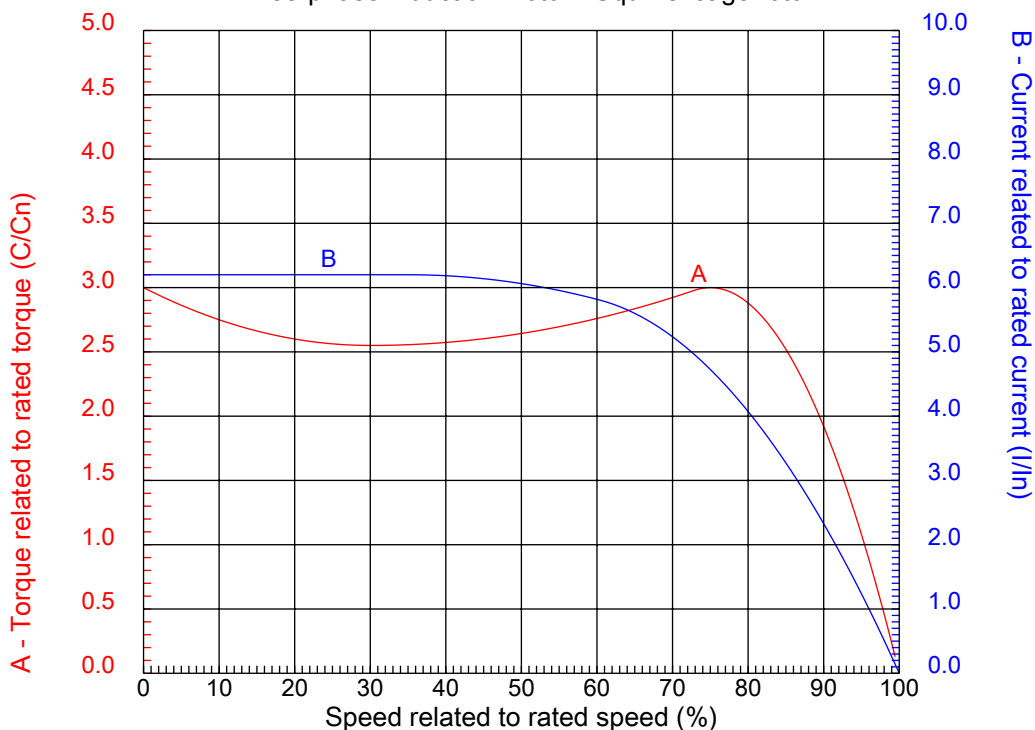


No.:

Date: 31-DEC-2012

CHARACTERISTIC CURVES RELATED TO SPEED

Three-phase induction motor - Squirrel cage rotor



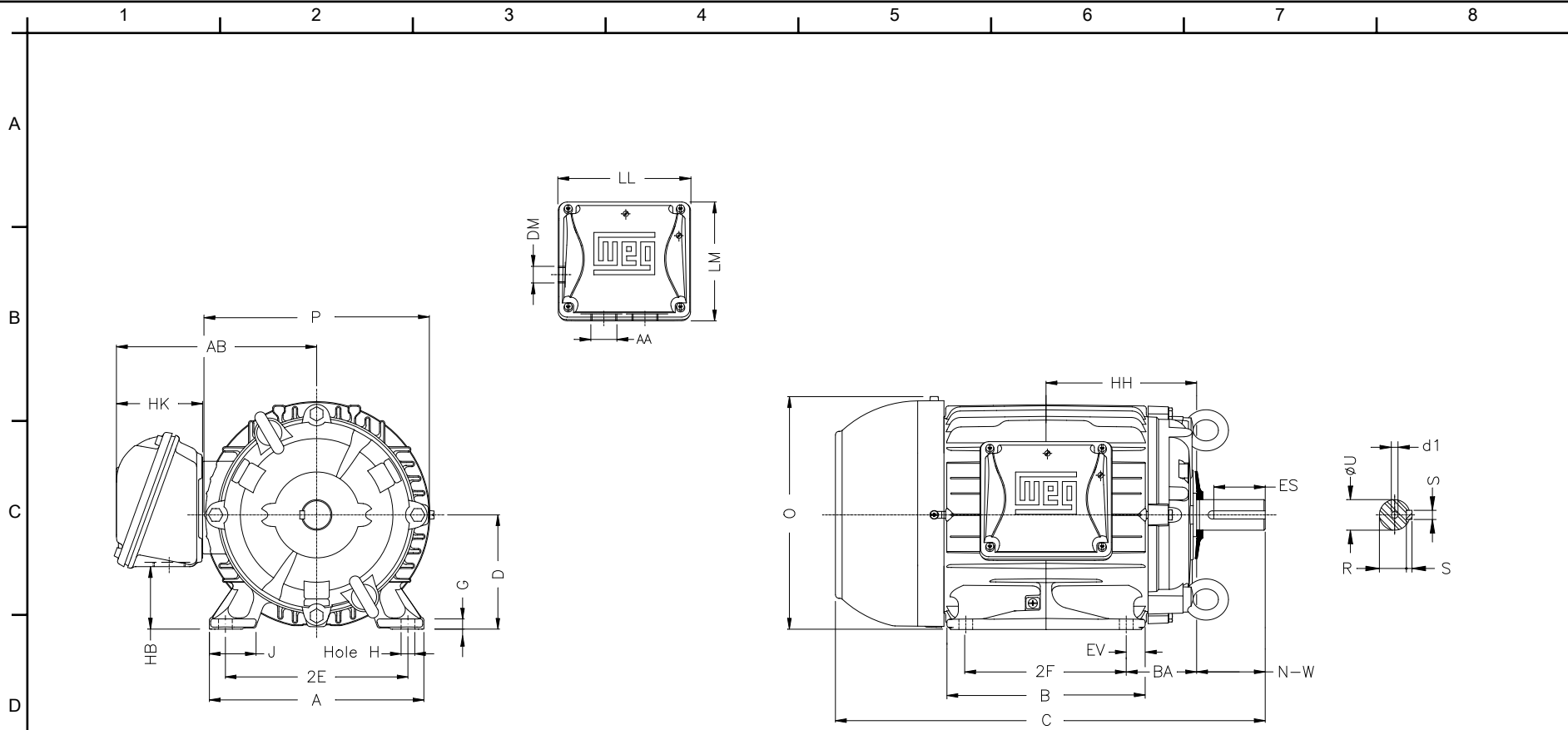
Customer :
Product line : W22 Cooling Tower Motors: NEMA Premium

Frame	: 145T	Locked rotor current (I _l /I _n)	: 6.2
Output	: 1 HP	Duty cycle	: S1
Frequency	: 60 Hz	Service factor	: 1.25
Full load speed	: 1150	Design	: B
Voltage	: 200 V	Locked rotor torque	: 300 %
Rated current	: 3.97 A	Breakdown torque	: 300 %
Insulation class	: F		

Notes:

Performed by

Checked



Notes:

Performed by:

Checked:

Customer:

W22 Cooling Tower Motors: NEMA Premium

Three-phase induction motor
Frame 145T - IP55

31-DEC-2012



2E	J	A	P	AB
5.500	1.437	6.457	6.850	6.260
2F	B	BA	U	N-W
5.000	6.142	2.250	0.875	2.250
ES	S	R	depth	D
1.575	0.187	0.765	0.187	3.500
G	HB	O	HF	HH
0.354	1.788	7.122	3.500	4.750
HK	H	C	LL	LM
2.717	0.344	13.346	4.527	4.094
AA	d1	d2		
NPT 3/4"	A 4	A 4		