



No.:

Date: 31-DEC-2012

Customer :

TECHNICAL PROPOSAL

Three-phase induction motor - Squirrel cage rotor

Product line : W22 Cooling Tower Motors: NEMA Premium

Catalog Number : 00218ET3ECT145TF1-W2

List Price : \$752

Notes:

Performed by:

Checked:



No.:

Date: 31-DEC-2012

DATA SHEET

Three-phase induction motor - Squirrel cage rotor

Customer :
Product line : W22 Cooling Tower Motors: NEMA Premium

Frame : 145T
Output : 2 HP
Frequency : 60 Hz
Poles : 4
Full load speed : 1750
Slip : 2.78 %
Voltage : 208-230/460 V
Rated current : 5.77-5.22/2.61 A
Locked rotor current : 39.2/19.6 A
Locked rotor current (I_L/I_n) : 7.5
No-load current : 2.48/1.24 A
Full load torque : 5.92 lb.ft
Locked rotor torque : 240 %
Breakdown torque : 300 %
Design : B
Insulation class : F
Temperature rise : 80 K
Locked rotor time : 11 s (hot)
Service factor : 1.25
Duty cycle : S1
Ambient temperature : -20°C - +40°C
Altitude : 1000
Degree of Protection : IP55
Approximate weight : 51 lb
Moment of inertia : 0.15614 sq.ft.lb
Noise level : 51 dB(A)

| | D.E. | N.D.E. | Load | Power factor | Efficiency (%) |
|---------------------|---------|---------|------|--------------|----------------|
| Bearings | 6205 ZZ | 6204 ZZ | 100% | 0.84 | 86.5 |
| Regreasing interval | --- | --- | 75% | 0.78 | 86.5 |
| Grease amount | --- | --- | 50% | 0.66 | 84.0 |

Notes:

Performed by

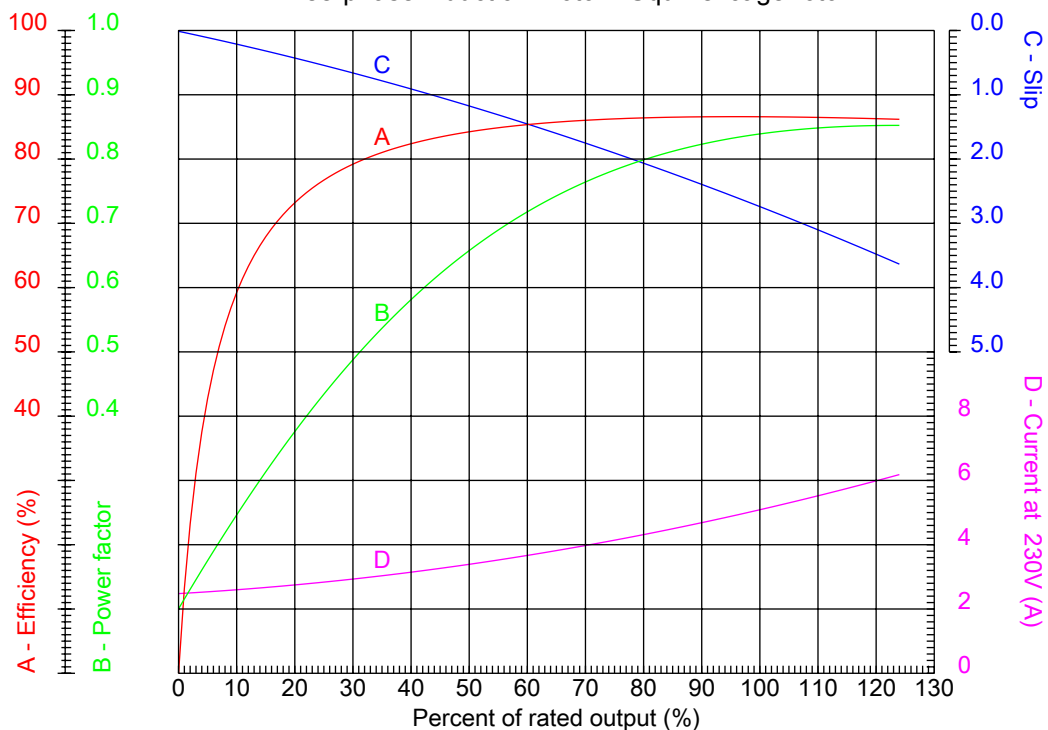
Checked



No.:

Date: 31-DEC-2012

PERFORMANCE CURVES RELATED TO RATED OUTPUT Three-phase induction motor - Squirrel cage rotor



Customer :
Product line : W22 Cooling Tower Motors: NEMA Premium

| | |
|----------------------------------|--|
| Frame : 145T | Locked rotor current (I _l /I _n) : 7.5 |
| Output : 2 HP | Duty cycle : S1 |
| Frequency : 60 Hz | Service factor : 1.25 |
| Full load speed : 1750 | Design : B |
| Voltage : 208-230/460 V | Locked rotor torque : 240 % |
| Rated current : 5.77-5.22/2.61 A | Breakdown torque : 300 % |
| Insulation class : F | |

Notes:

Performed by

Checked

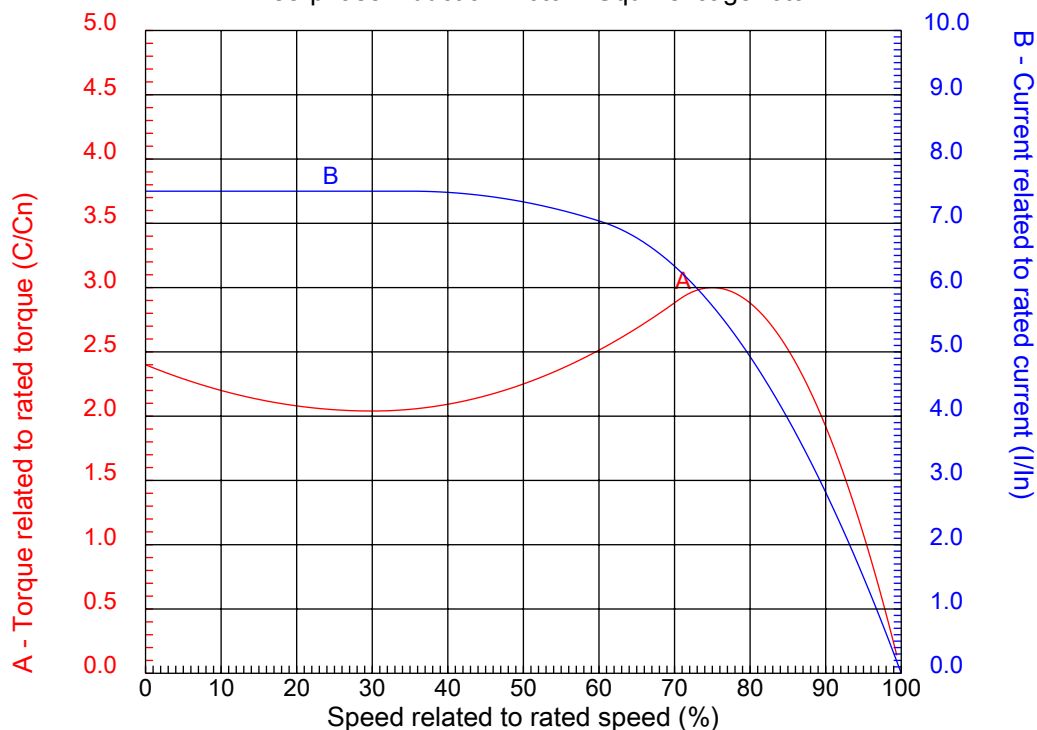


No.:

Date: 31-DEC-2012

CHARACTERISTIC CURVES RELATED TO SPEED

Three-phase induction motor - Squirrel cage rotor



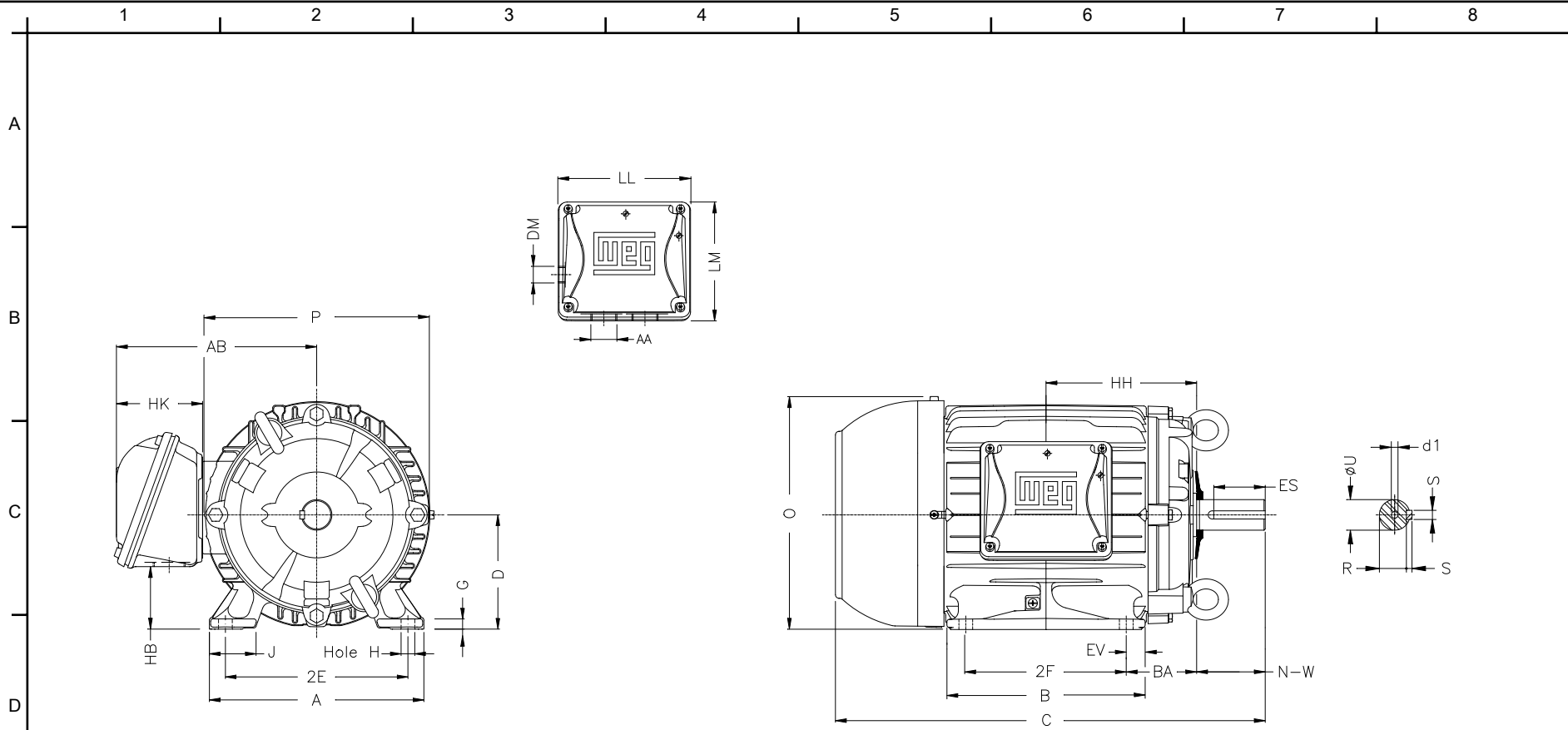
Customer :
Product line : W22 Cooling Tower Motors: NEMA Premium

| | | | |
|------------------|--------------------|--|---------|
| Frame | : 145T | Locked rotor current (I _l /I _n) | : 7.5 |
| Output | : 2 HP | Duty cycle | : S1 |
| Frequency | : 60 Hz | Service factor | : 1.25 |
| Full load speed | : 1750 | Design | : B |
| Voltage | : 208-230/460 V | Locked rotor torque | : 240 % |
| Rated current | : 5.77-5.22/2.61 A | Breakdown torque | : 300 % |
| Insulation class | : F | | |

Notes:

Performed by

Checked



Notes:

Performed by:

Checked:

Customer:

W22 Cooling Tower Motors: NEMA Premium

Three-phase induction motor
Frame 145T - IP55

31-DEC-2012



| | | | | |
|----------|-------|--------|-------|-------|
| 2E | J | A | P | AB |
| 5.500 | 1.437 | 6.457 | 6.850 | 6.260 |
| 2F | B | BA | U | N-W |
| 5.000 | 6.142 | 2.250 | 0.875 | 2.250 |
| ES | S | R | depth | D |
| 1.575 | 0.187 | 0.765 | 0.187 | 3.500 |
| G | HB | O | HF | HH |
| 0.354 | 1.788 | 7.122 | 3.500 | 4.750 |
| HK | H | C | LL | LM |
| 2.717 | 0.344 | 13.346 | 4.527 | 4.094 |
| AA | d1 | d2 | | |
| NPT 3/4" | A 4 | A 4 | | |