



No.:

Date: 31-DEC-2012

Customer :

TECHNICAL PROPOSAL

Three-phase induction motor - Squirrel cage rotor

Product line : W22 Cooling Tower Motors: NEMA Premium

Catalog Number : 00718ET3PCT213TF1-W2

List Price : \$1,293

Notes:

Performed by:

Checked:



No.:

Date: 31-DEC-2012

DATA SHEET

Three-phase induction motor - Squirrel cage rotor

Customer :
 Product line : W22 Cooling Tower Motors: NEMA Premium

Frame : 213T
 Output : 7.5 HP
 Frequency : 60 Hz
 Poles : 4
 Full load speed : 1765
 Slip : 1.94 %
 Voltage : 200 V
 Rated current : 20.7 A
 Locked rotor current : 147 A
 Locked rotor current (I_L/I_n) : 7.1
 No-load current : 9.32 A
 Full load torque : 22.0 lb.ft
 Locked rotor torque : 220 %
 Breakdown torque : 310 %
 Design : B
 Insulation class : F
 Temperature rise : 80 K
 Locked rotor time : 20 s (hot)
 Service factor : 1.25
 Duty cycle : S1
 Ambient temperature : -20°C - +40°C
 Altitude : 1000
 Degree of Protection : IP55
 Approximate weight : 154 lb
 Moment of inertia : 1.3436 sq.ft.lb
 Noise level : 58 dB(A)

| | D.E. | N.D.E. | Load | Power factor | Efficiency (%) |
|---------------------|---------|---------|------|--------------|----------------|
| Bearings | 6308 ZZ | 6207 ZZ | 100% | 0.84 | 91.7 |
| Regreasing interval | --- | --- | 75% | 0.78 | 91.0 |
| Grease amount | --- | --- | 50% | 0.67 | 89.5 |

Notes:

Performed by

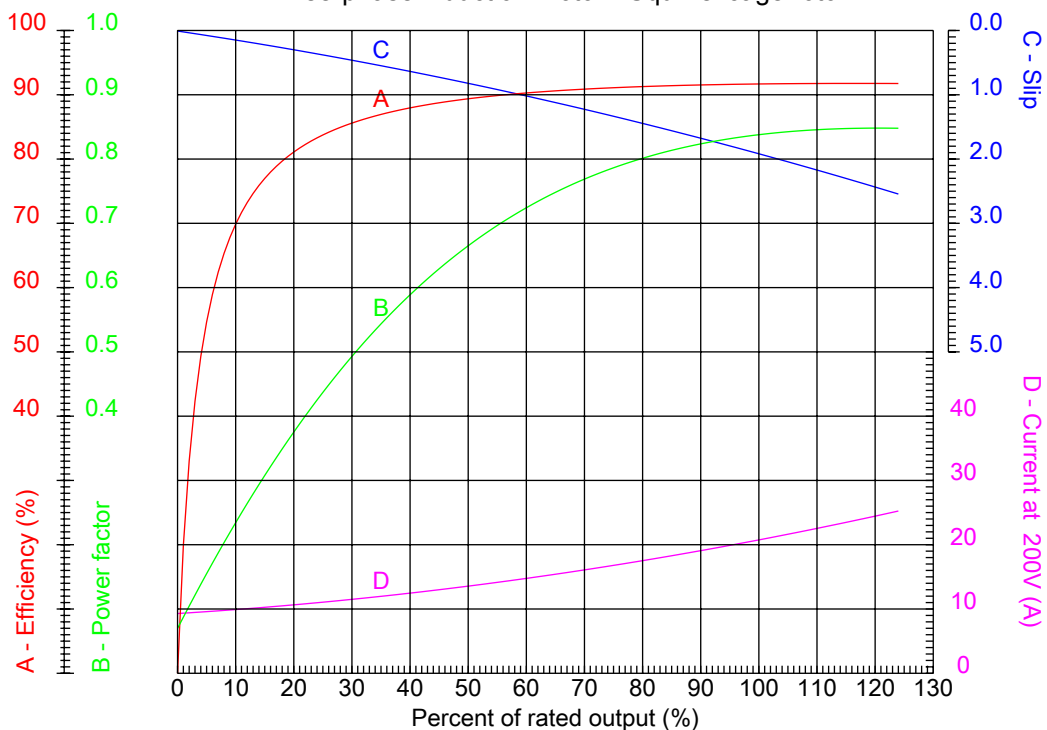
Checked



No.:

Date: 31-DEC-2012

PERFORMANCE CURVES RELATED TO RATED OUTPUT
Three-phase induction motor - Squirrel cage rotor



Customer :
Product line : W22 Cooling Tower Motors: NEMA Premium

| | | | |
|------------------|----------|--|---------|
| Frame | : 213T | Locked rotor current (I _l /I _n) | : 7.1 |
| Output | : 7.5 HP | Duty cycle | : S1 |
| Frequency | : 60 Hz | Service factor | : 1.25 |
| Full load speed | : 1765 | Design | : B |
| Voltage | : 200 V | Locked rotor torque | : 220 % |
| Rated current | : 20.7 A | Breakdown torque | : 310 % |
| Insulation class | : F | | |

Notes:

Performed by

Checked

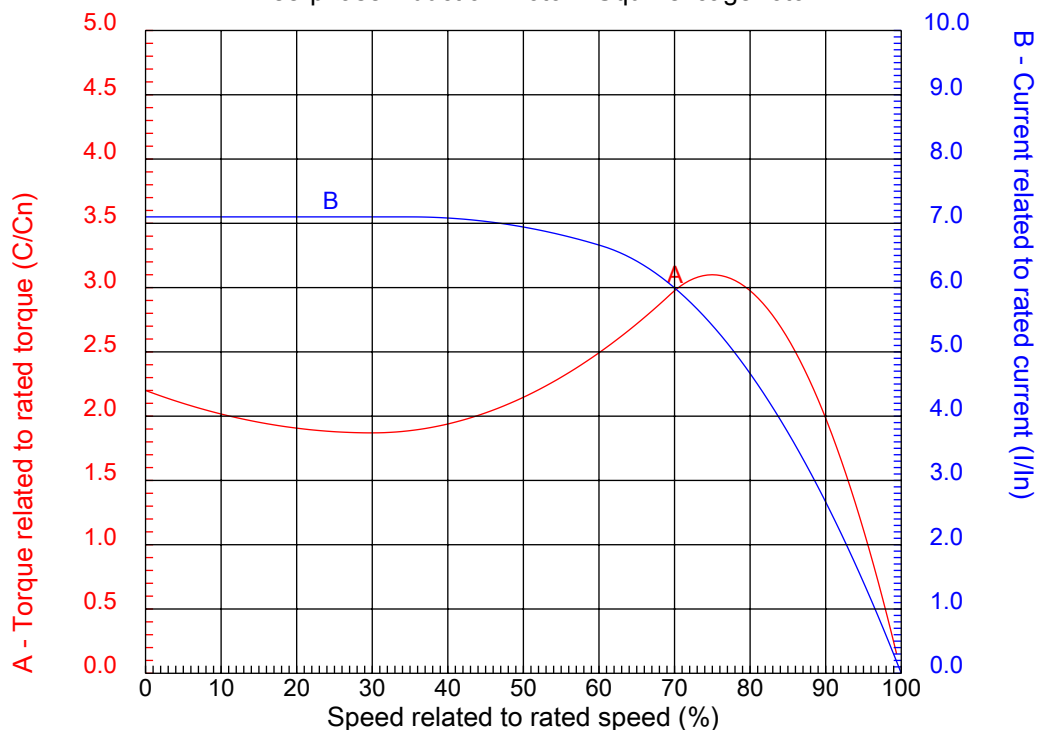


No.:

Date: 31-DEC-2012

CHARACTERISTIC CURVES RELATED TO SPEED

Three-phase induction motor - Squirrel cage rotor



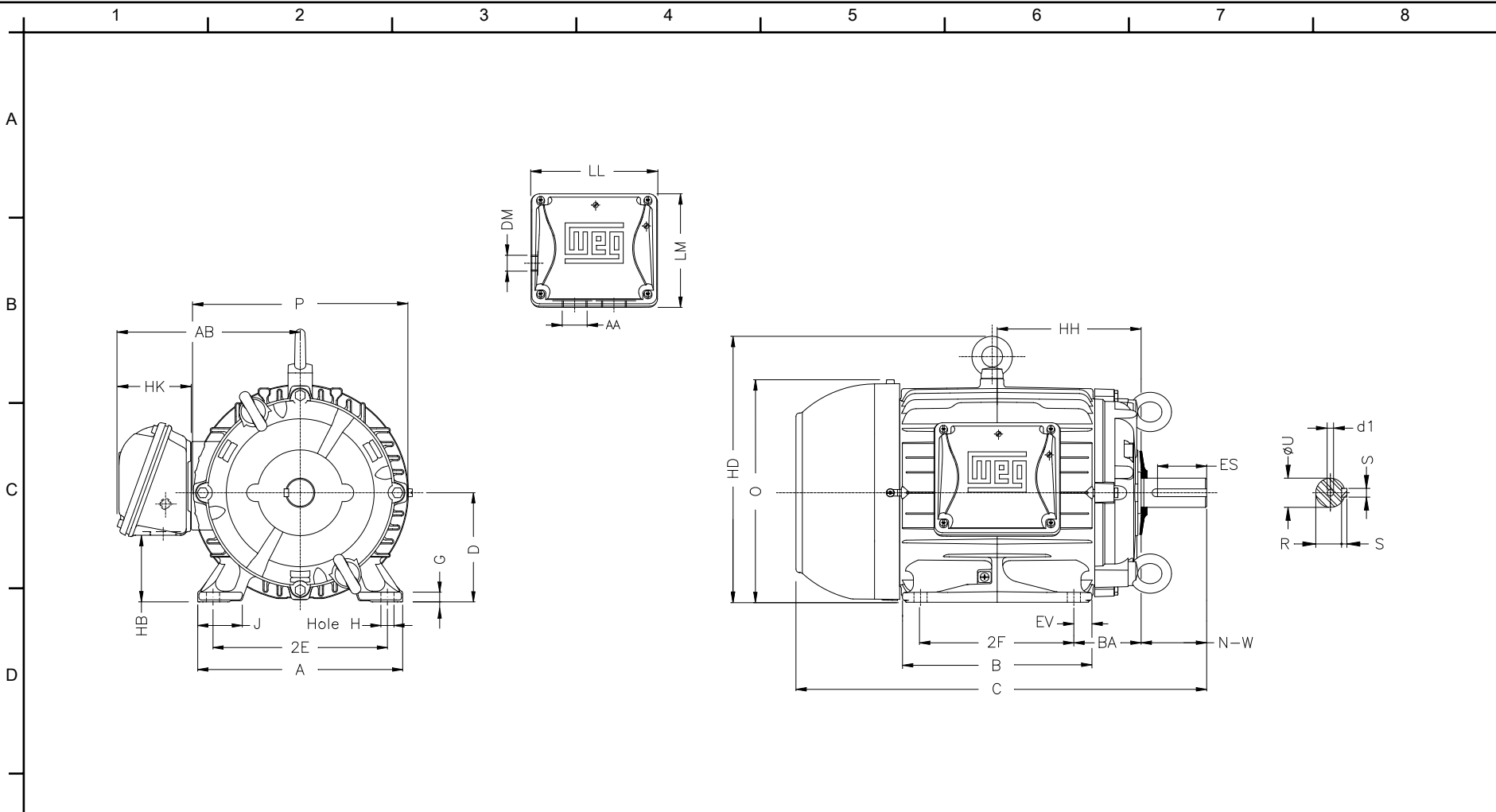
Customer :
Product line : W22 Cooling Tower Motors: NEMA Premium

| | | | |
|------------------|----------|--|---------|
| Frame | : 213T | Locked rotor current (I _l /I _n) | : 7.1 |
| Output | : 7.5 HP | Duty cycle | : S1 |
| Frequency | : 60 Hz | Service factor | : 1.25 |
| Full load speed | : 1765 | Design | : B |
| Voltage | : 200 V | Locked rotor torque | : 220 % |
| Rated current | : 20.7 A | Breakdown torque | : 310 % |
| Insulation class | : F | | |

Notes:

Performed by

Checked



Notes:

| | | | | |
|--------|-------|-------|--------|-------|
| 2E | J | A | P | AB |
| 8.500 | 1.791 | 9.764 | 10.236 | 8.667 |
| 2F | K | B | BA | U |
| 5.500 | 2.165 | 7.362 | 3.500 | 1.375 |
| N-W | ES | S | R | depth |
| 3.375 | 2.480 | 0.313 | 1.203 | 0.313 |
| D | G | HB | O | T |
| 5.250 | 0.669 | 3.006 | 10.841 | 1.772 |
| HD | HF | HH | HK | H |
| 12.613 | 5.250 | 6.250 | 3.155 | 0.406 |
| C | LL | LM | AA | d1 |
| 18.021 | 5.512 | 5.236 | NPT 1" | A 4 |
| d2 | | | | |
| A 4 | | | | |

Performed by:

Checked:

Customer:

W22 Cooling Tower Motors: NEMA Premium

Three-phase induction motor
Frame 213T - IP55

31-DEC-2012

