



No.:

Date: 31-DEC-2012

Customer :

TECHNICAL PROPOSAL

Three-phase induction motor - Squirrel cage rotor

Product line : Cooling Tower Motors : High Efficiency - Two Speed

Catalog Number : 07589EP3QCT404V

List Price : \$14,226

Notes:

Performed by:

Checked:



No.:

Date: 31-DEC-2012

DATA SHEET

Three-phase induction motor - Squirrel cage rotor

Customer :
Product line : Cooling Tower Motors : High Efficiency - Two Speed

Frame : 404/5T
Output : 18.5 HP
Frequency : 60 Hz
Poles : 8
Full load speed : 885
Slip : 1.67 %
Voltage : 460 V
Rated current : 29.1 A
Locked rotor current : 125 A
Locked rotor current (I_L/I_n) : 4.3
No-load current : 18.0 A
Full load torque : 108 lb.ft
Locked rotor torque : 150 %
Breakdown torque : 200 %
Design : A
Insulation class : F
Temperature rise : 80 K
Locked rotor time : 46 s (hot)
Service factor : 1.15
Duty cycle : S1
Ambient temperature : -20°C - +40°C
Altitude : 1000
Degree of Protection : IP55
Approximate weight : 1125 lb
Moment of inertia : 27.403 sq.ft.lb
Noise level : 62 dB(A)

	D.E.	N.D.E.	Load	Power factor	Efficiency (%)
Bearings	6316 C3	6314 C3	100%	0.65	90.2
Regreasing interval	8569 h	9789 h	75%	0.57	89.5
Grease amount	34 g	27 g	50%	0.45	88.5

Notes:

Performed by

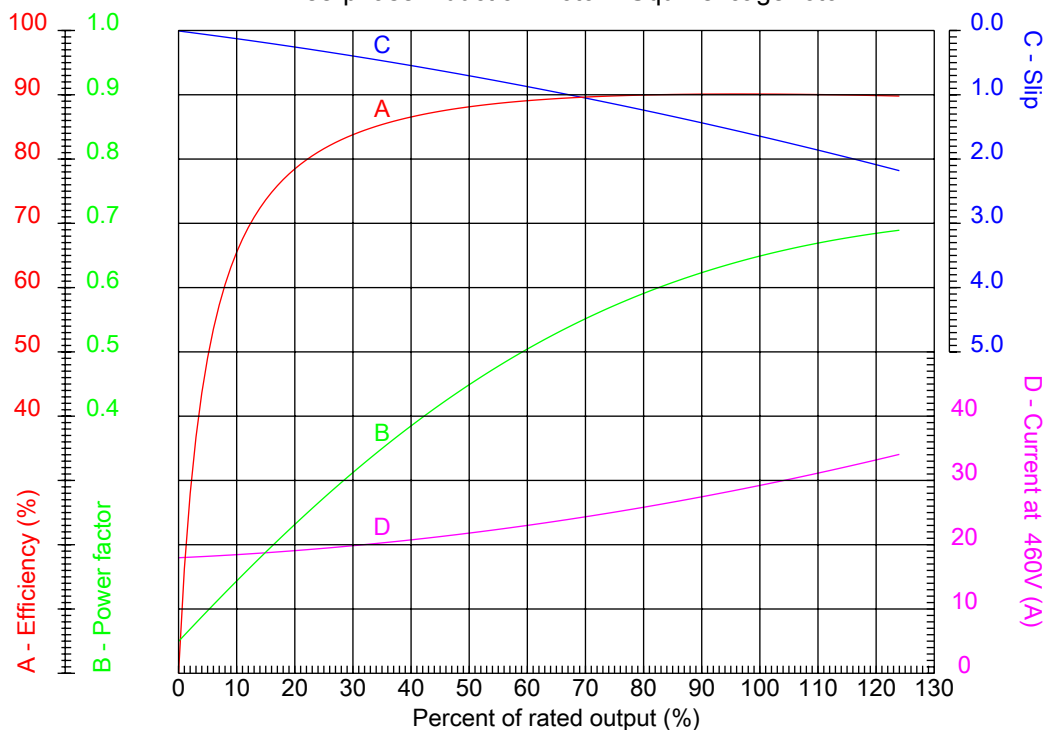
Checked



No.:

Date: 31-DEC-2012

PERFORMANCE CURVES RELATED TO RATED OUTPUT
Three-phase induction motor - Squirrel cage rotor



Customer :
Product line : Cooling Tower Motors : High Efficiency - Two Speed

Frame	: 404/5T	Locked rotor current (I _l /I _n)	: 4.3
Output	: 18.5 HP	Duty cycle	: S1
Frequency	: 60 Hz	Service factor	: 1.15
Full load speed	: 885	Design	: A
Voltage	: 460 V	Locked rotor torque	: 150 %
Rated current	: 29.1 A	Breakdown torque	: 200 %
Insulation class	: F		

Notes:

Performed by

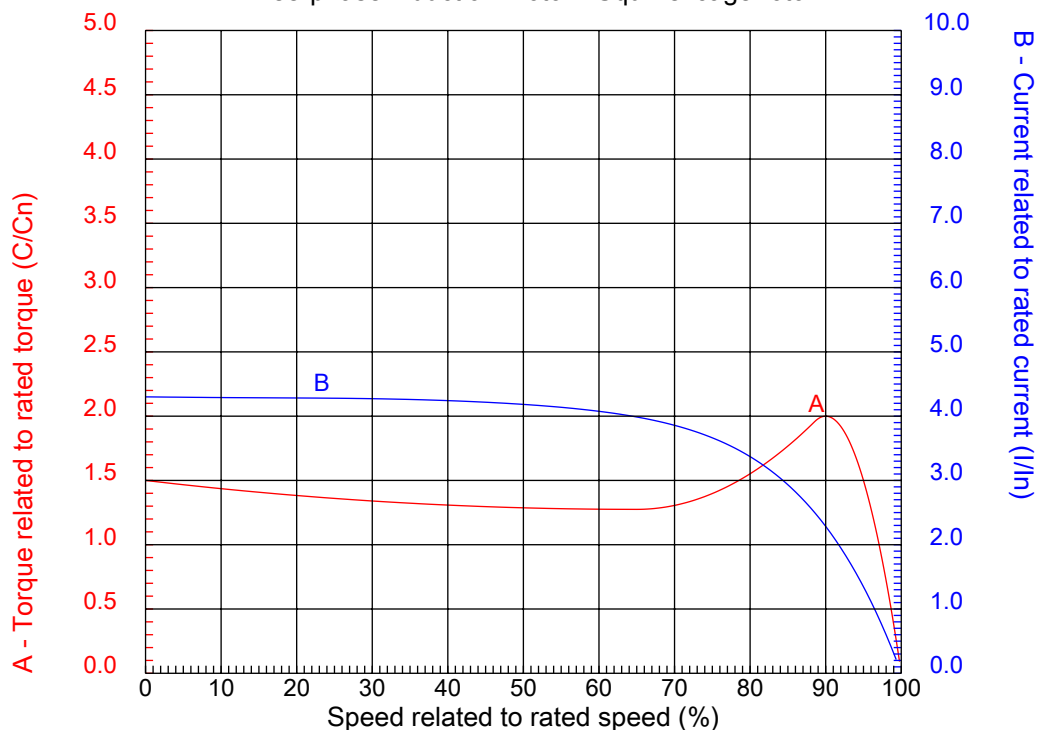
Checked



No.:

Date: 31-DEC-2012

CHARACTERISTIC CURVES RELATED TO SPEED Three-phase induction motor - Squirrel cage rotor



Customer :
Product line : Cooling Tower Motors : High Efficiency - Two Speed

Frame	: 404/5T	Locked rotor current (I _l /I _{ln})	: 4.3
Output	: 18.5 HP	Duty cycle	: S1
Frequency	: 60 Hz	Service factor	: 1.15
Full load speed	: 885	Design	: A
Voltage	: 460 V	Locked rotor torque	: 150 %
Rated current	: 29.1 A	Breakdown torque	: 200 %
Insulation class	: F		

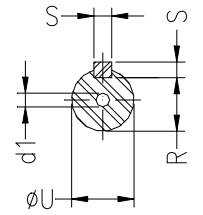
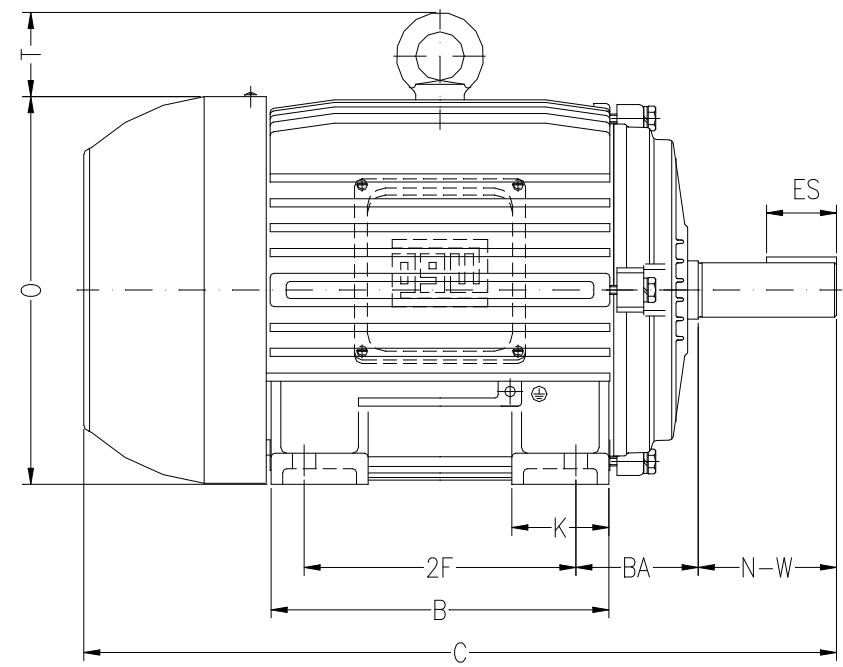
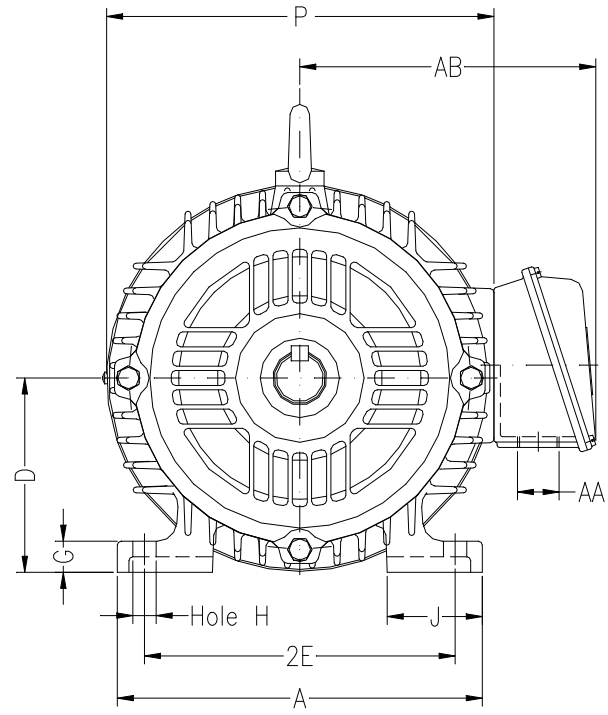
Notes:

Performed by

Checked

1 2 3 4 5 6 7 8

A
B
C
D
E
F



Notes:

Performed by:

Checked:

Customer:

Cooling Tower Motors : High Efficiency - Two Speed

2E 15.984	2F 12.244/13.740	H 0.807	BA 6.625	A 19.921
B 17.677	C 38.077	D 10.000	G 1.811	J 3.937
K 5.433	O 19.496	P 18.740	ES 5.512	S 0.750
N-W 7.250	U 2.875	R 2.449	AB 16.380	AA NPT 3"
d1 DUNC 3/4"-10	Flange FD-508	AJ 20.000	AK 18.000	BD 22.000
BF 0.828	BB 0.203			

Three-phase induction motor
Frame 404/5T - IP55

31-DEC-2012

