

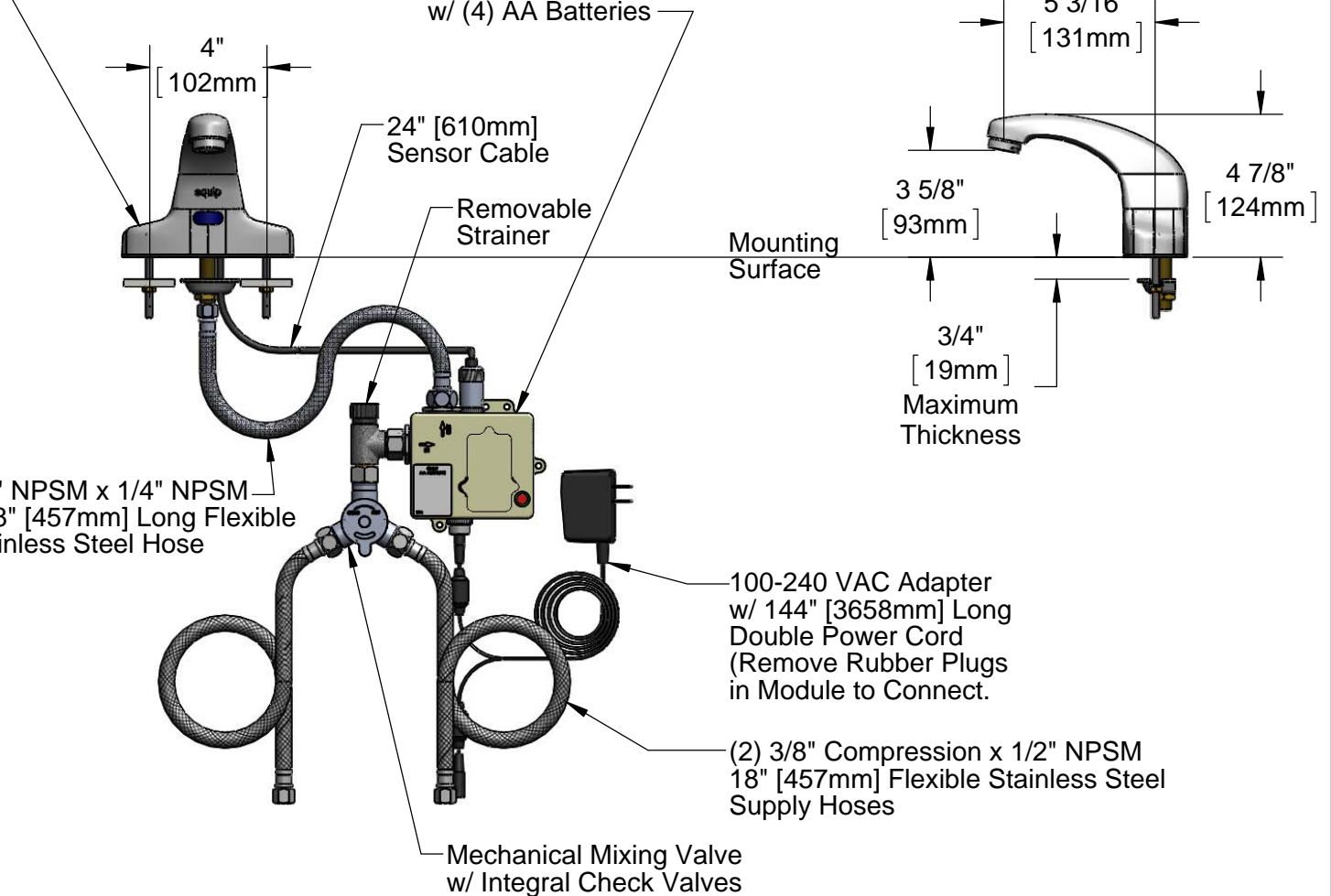
ADA Compliant

This Space for Architect/Engineer Approval

Job Name _____ Date _____
 Model Specified _____ Quantity _____
 Customer/Wholesaler _____
 Contractor _____
 Architect/Engineer _____

Polished Chrome Plated
 Cast Spout w/ 2.2 GPM
 Vandal Resistant
 Aerator & Key

3 5/8" x 4 3/16" x 2" Deep
 [92mm x 106mm x 51mm]
 Water Resistant Control Module
 Box (White), AC or DC Operated
 w/ (4) AA Batteries



1/2" NPSM x 1/4" NPSM
 x 18" [457mm] Long Flexible
 Stainless Steel Hose

100-240 VAC Adapter
 w/ 144" [3658mm] Long
 Double Power Cord
 (Remove Rubber Plugs
 in Module to Connect.)

(2) 3/8" Compression x 1/2" NPSM
 18" [457mm] Flexible Stainless Steel
 Supply Hoses

Mechanical Mixing Valve
 w/ Integral Check Valves

Rough-In Requirement:

- (1) ϕ 1" [25mm] Center Shank Mounting Hole
- (2) ϕ 1/2" [13mm] Mounting Stud Holes on 4" [102mm] Centers

Model Number 5EF-2D-DS	Date 01/07/13	Scale 1:6	Drawn DMH	Checked GEF	Approved JHB
----------------------------------	-------------------------	---------------------	---------------------	-----------------------	------------------------

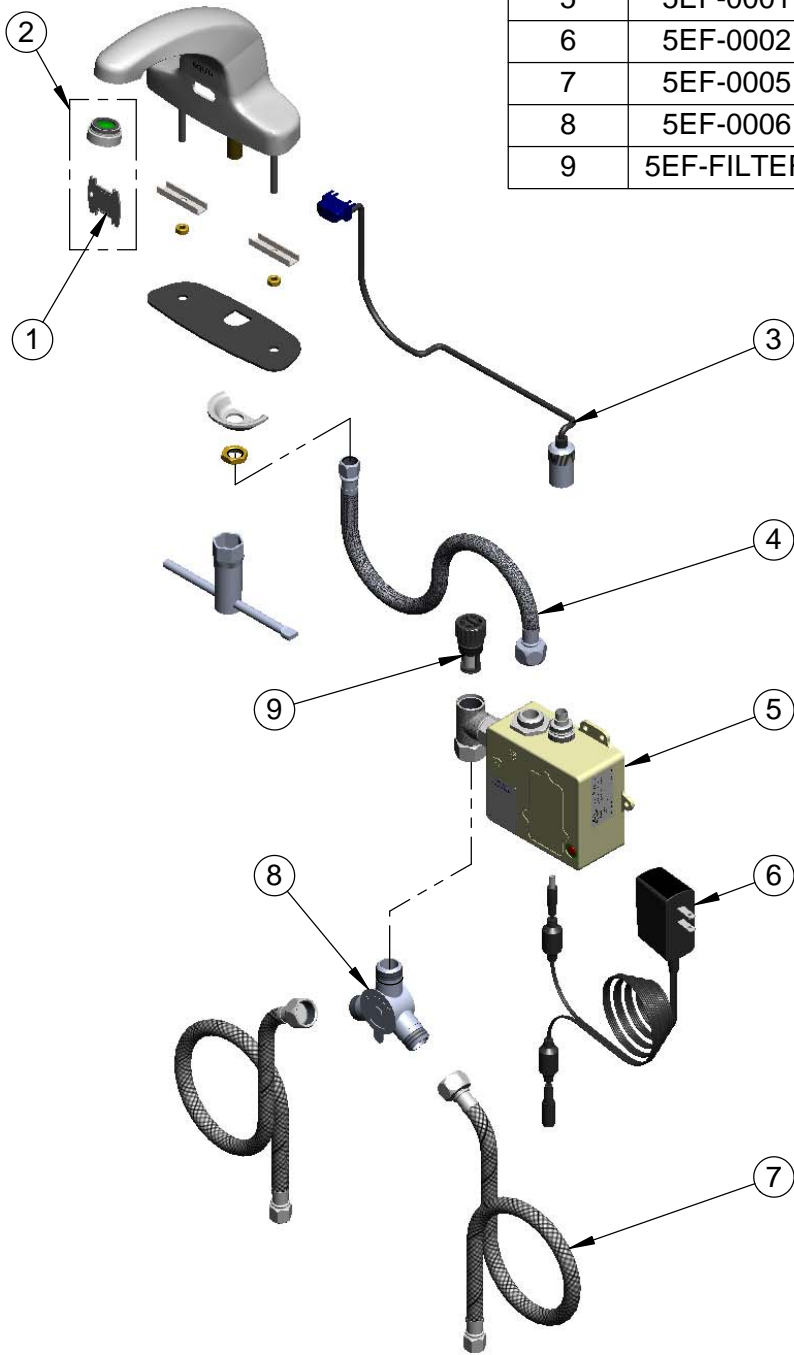


Product Specifications:

Electronic Faucet: Cast Brass Centerset Faucet w/ 4" c/c Mounting Studs, Temperature Control Mixing Valve w/ Integral Check Valves, (2) 18" Long Flexible Supply Hoses & AC-DC Control Module

equip Foodservice Accessories
 2 Saddleback Cove, P.O. Box 1088
 Travelers Rest, South Carolina 29690
 Phone: 800.891.4808 Fax: 800.868.0084

ITEM NO.	SALES NO.	DESCRIPTION
1	015425-45	Vandal Resistant Key
2	B-0199-09	Vandal Resistant 2.2 GPM Aerator
3	5EF-0003	24" Sensor Cable
4	016297-45	Inlet Hose, Faucet, 1/2" NPSM-F x 1/4" NPSM-F
5	5EF-0001	equip Sensor Faucet - Control Module
6	5EF-0002	Equip AC Transformer, 100-240 VAC
7	5EF-0005	Supply Hose, 9/16-24 Female x 1/2" NPSM
8	5EF-0006	Mechanical Mixing Valve
9	5EF-FILTER	Replacement Filter



Model Number 5EF-2D-DS	Date 01/07/13	Scale NTS	Drawn DMH	Checked GEF	Approved JHB
----------------------------------	-------------------------	---------------------	---------------------	-----------------------	------------------------



Product Specifications:

Electronic Faucet: Cast Brass Centerset Faucet w/ 4" c/c Mounting Studs, Temperature Control Mixing Valve w/ Integral Check Valves, (2) 18" Long Flexible Supply Hoses & AC-DC Control Module

equip Foodservice Accessories
 2 Saddleback Cove, P.O. Box 1088
 Travelers Rest, South Carolina 29690
 Phone: 800.891.4808 Fax: 800.868.0084