

**BALDOR**

**BALDOR® • RELIANCE**

**Product Information Packet**

**CM7006A**

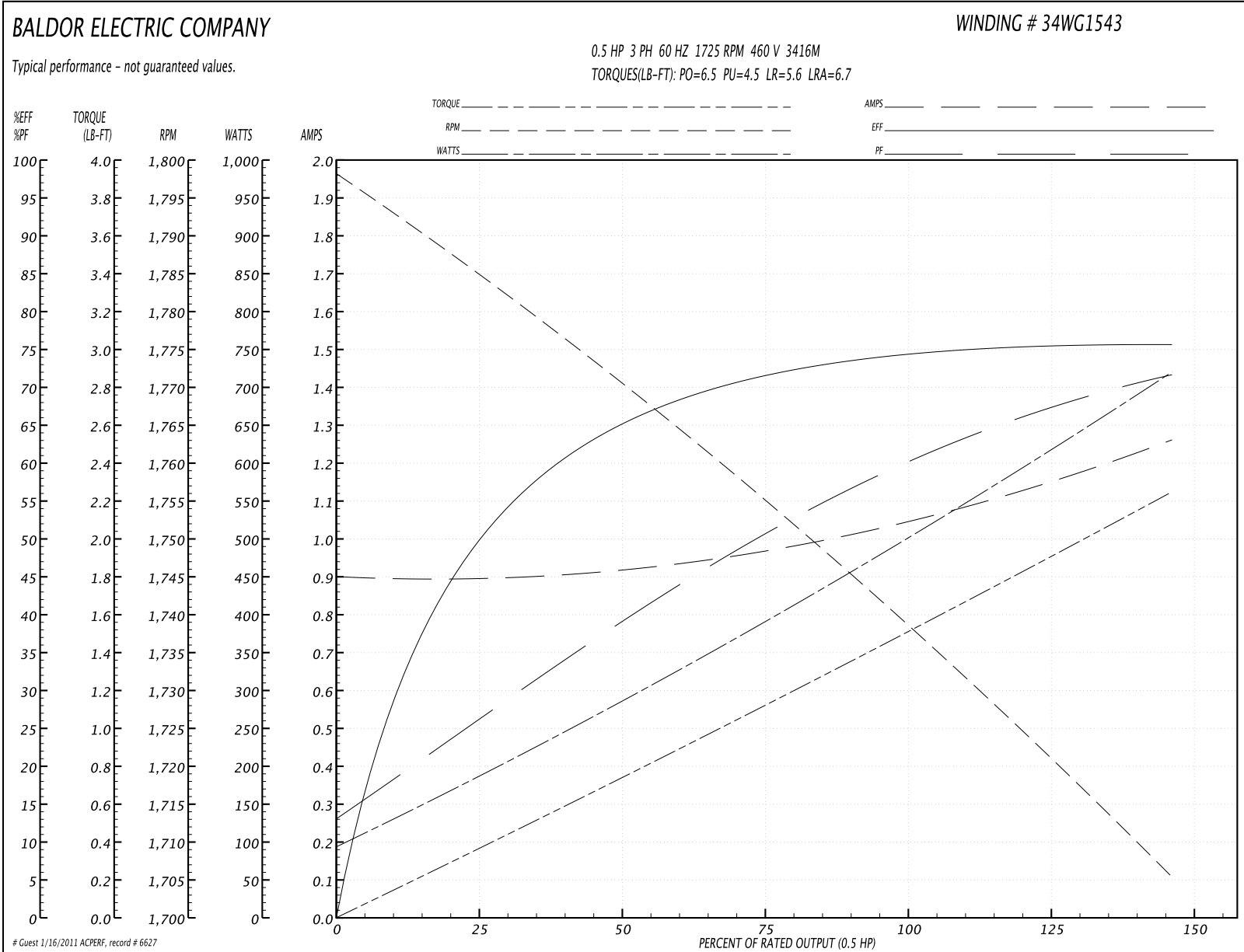
**.5HP,1725RPM,3PH,60HZ,56C,X3416M,XPFC,F1**

Part Detail							
Revision:	Q	Status:	PRD/A	Change #:		Proprietary:	No
Type:	AC	Prod. Type:	3416M	Elec. Spec:	34WG1543	CD Diagram:	
Enclosure:	XPFC	Mfg Plant:		Mech. Spec:	34-5329	Layout:	
Frame:	56C	Mounting:	F1	Poles:	04	Created Date:	
Base:	RG	Rotation:	R	Insulation:	B	Eff. Date:	03-06-2009
Leads:	12#18	Literature:		Elec. Diagram:		Replaced By:	

Nameplate NP0016XP							
NO.		CC					
SER.							
SPEC.	34-5329-1543						
CAT.NO.	CM7006A						
HP	1/2	T. CODE	T3C				
VOLTS	208-230/460						
AMPS	2.1-2/1						
RPM	1725						
HZ	60	PH	3	CL	B		
SER.F.	1.00	DES	B	CODE	L		
RATING	40C AMB-CONT						
FRAME	56C	NEMA-NOM-EFF	74	PF	63		
USABLE AT 208V	2.1						

Performance Data at 460V, 60Hz, 0.5HP (Typical performance - Not guaranteed values)							
General Characteristics							
Full Load Torque:	1.5 LB-FT			Start Configuration:	DOL		
No-Load Current:	0.89 Amps			Break-Down Torque:	6.5 LB-FT		
Line-line Res. @ 25°C.:	33.0 Ohms A Ph / 0.0 Ohms B Ph			Pull-Up Torque:	4.5 LB-FT		
Temp. Rise @ Rated Load:	59 C			Locked-Rotor Torque:	5.6 LB-FT		
Temp. Rise @ S.F. Load:				Starting Current:	6.7 Amps		
Load Characteristics							
% of Rated Load	25	50	75	100	125	150	S.F.
Power Factor:	27.0	39.0	51.0	60.0	67.0	72.0	0.0
Efficiency:	49.8	65.0	71.7	74.5	75.6	75.5	0.0
Speed:	1785.0	1770.0	1756.0	1737.0	1724.0	1705.0	0.0
Line Amperes:	0.9	0.94	0.98	1.0	1.15	1.27	0.0

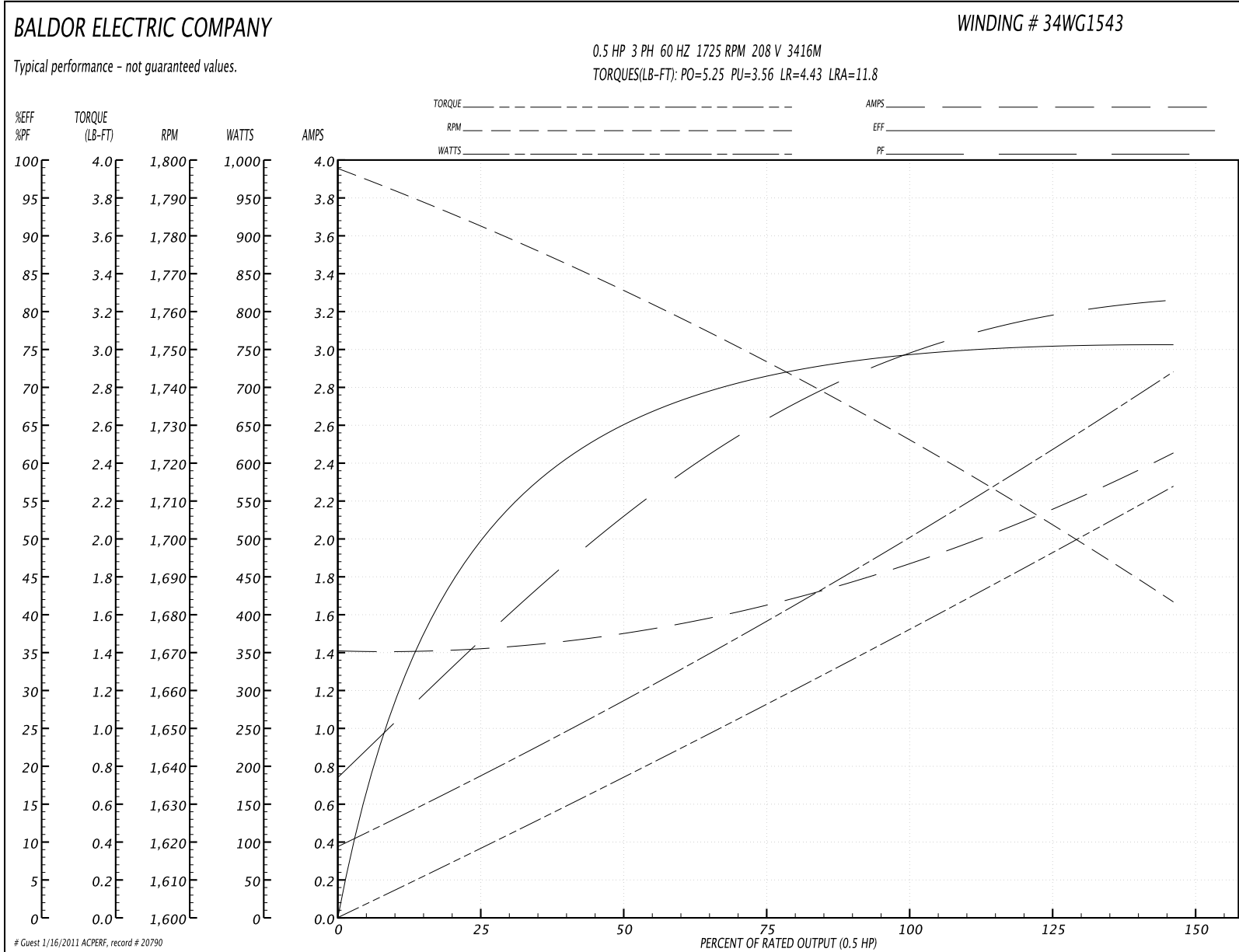
Performance Graph at 460V, 60Hz, 0.5HP Typical performance - Not guaranteed values

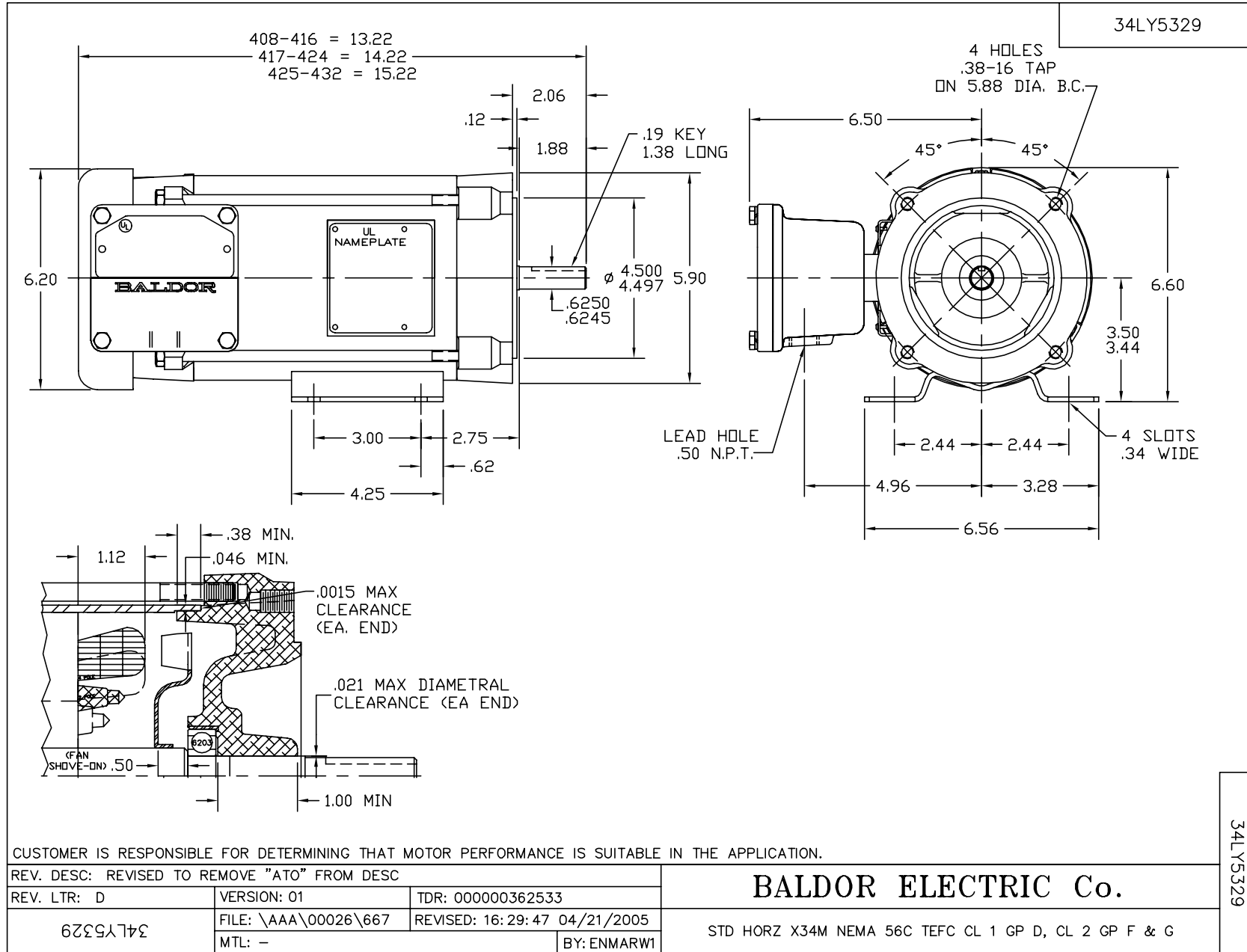


**Performance Data at 208V, 60Hz, 0.5HP (Typical performance - Not guaranteed values)**

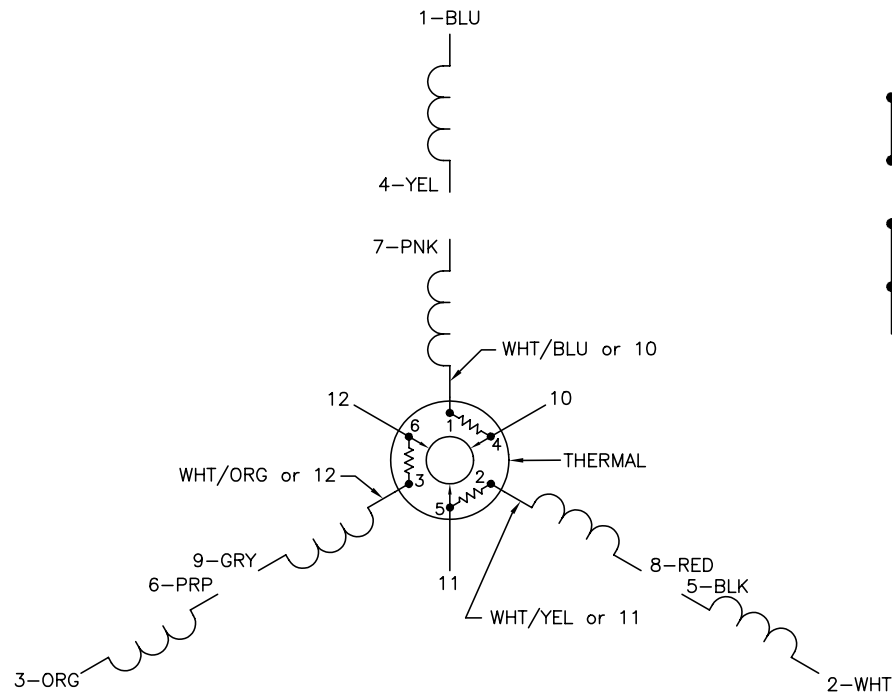
General Characteristics							
Full Load Torque:	1.51 LB-FT			Start Configuration:	DOL		
No-Load Current:	1.39 Amps			Break-Down Torque:	5.25 LB-FT		
Line-line Res. @ 25°C.:	8.35 Ohms A Ph / 0.0 Ohms B Ph			Pull-Up Torque:	3.56 LB-FT		
Temp. Rise @ Rated Load:	50 C			Locked-Rotor Torque:	4.43 LB-FT		
Temp. Rise @ S.F. Load:				Starting Current:	11.8 Amps		
Load Characteristics							
% of Rated Load	25	50	75	100	125	150	S.F.
Power Factor:	37.0	52.0	65.0	77.0	79.0	81.0	0.0
Efficiency:	49.3	64.9	71.8	74.4	75.5	75.5	0.0
Speed:	1782.0	1765.0	1748.0	1725.0	1707.0	1683.0	0.0
Line Amperes:	1.43	1.54	1.67	1.79	2.14	2.47	0.0

Performance Graph at 208V, 60Hz, 0.5HP Typical performance - Not guaranteed values

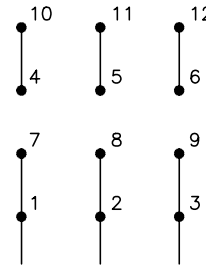




CD0007

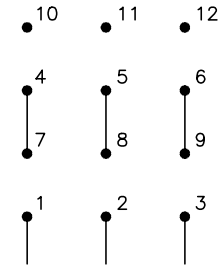


LOW VOLTAGE  
(2Y)



LINE

HIGH VOLTAGE  
(1Y)



LINE

NOTES:

1. INTERCHANGE ANY TWO LINE LEADS TO REVERSE ROTATION.
2. ACTUAL NUMBER OF INTERNAL PARALLEL CIRCUITS MAY VARY.
3. LEAD COLORS ARE OPTIONAL. LEADS MUST ALWAYS BE NUMBERED AS SHOWN.

REV. DESC: ADDED "CK" PLANT CODE			
REV. LTR: E	BY: EAH	REVISED: 05/06/99 17:1	TDR: 0181040
L00000		FILE: AAA00008370	MDL: -
		MTL: -	

**BALDOR ELECTRIC Co.**

3PH, DV, THERMAL, 12 LEADS

CD0007