

**BALDOR**

**BALDOR® • RELIANCE**

**Product Information Packet**

**JSM3120**

**1.5HP,3450RPM,3PH,60HZ,56YZ,3424M,OPEN,F**

Part Detail							
Revision:	B	Status:	PRD/A	Change #:		Proprietary:	No
Type:	AC	Prod. Type:	3424M	Elec. Spec:	34WGX480	CD Diagram:	
Enclosure:	OPEN	Mfg Plant:		Mech. Spec:	34L408	Layout:	
Frame:	56YZ	Mounting:	F1	Poles:	02	Created Date:	08-05-2009
Base:	N	Rotation:	R	Insulation:	B	Eff. Date:	11-01-2010
Leads:	9#18	Literature:		Elec. Diagram:		Replaced By:	

**Nameplate NP1256L**

CAT.NO.	JSM3120						
SPEC.	34L408X480G1						
HP	1.5						
VOLTS	230/460						
AMP	4/2						
RPM	3450						
FRAME	56YZ	HZ	60	PH	3		
SER.F.	1.15	CODE	L	DES	B	CLASS	B
NEMA-NOM-EFF	81.5	PF	89				
RATING	40C AMB-CONT						
CC		USABLE AT 208V	4.7				
DE	6203	ODE	6203				
ENCL	OPEN	SN					
	SFA 4.4/2.2						

Parts List		
Part Number	Description	Quantity
SA184373	SA 34L408X480G1	1.000 EA
RA172212	RA 34L408X480G1	1.000 EA
WD4100A01	DP-875 HEYCO PLUG OR 62MP0875 MICRO PLAS	1.000 EA
11XT0832G06	8-32 X 3/8 TY 23 TAPPING	1.000 EA
SP1000A01	TERM BOARD, MODEL 34 SW	1.000 EA
51XW0832A07	8-32 X .44, TAPTITE II, HEX WSHR SLTD SE	3.000 EA
RM1010A12	.437 I.D. 1" VINYL CAP (SHORT) MOCAP	1.000 EA
34EP3202A02	FR ENDPLATE, MACH	1.000 EA
HW5100A03SP	WAVY WASHER (W1543-017)	1.000 EA
34EP3501A14E	ENDPLATE, MACH W/BLACK E-COATING	1.000 EA
51XN1032A20	10-32 X 1 1/4 HX WS SL SR	2.000 EA
34AD2007	BAFFLE PLATE INJECTION MOLD	1.000 EA
51XT0632A06	6-32X3/8 TY23 HXWS SLDSR	4.000 EA
34FH4500A02P	DRIPCOVER, MODEL 34	1.000 EA
51XW0832A07	8-32 X .44, TAPTITE II, HEX WSHR SLTD SE	2.000 EA
34CB4501SP	TERMINAL BOX LID, STAMPED X (PLATED)	1.000 EA
51XW0832A07	8-32 X .44, TAPTITE II, HEX WSHR SLTD SE	2.000 EA
51XW0832A07	8-32 X .44, TAPTITE II, HEX WSHR SLTD SE	2.000 EA
MG1000G27	PAINT- S9282E CHARCOAL GREY	0.014 GA
10XF0440S02	04-40 X 1/8 TYPE F HEX HD STAINLESS STIC	2.000 EA
HA3100A22	THRUBOLT 10-32 X 10.125	4.000 EA
LB5040	INSTRUCTION TAG, AC & DC	1.000 EA
LB1125C01	STD (STOCK) CARTON LABEL BALDOR WITH FLA	1.000 EA
LC0005E01	CONN.DIA./WARNING LABEL (LC0005/LB1119)	1.000 EA

Parts List (continued)		
Part Number	Description	Quantity
NP1256L	ALUM, UL CSA CC, W/O THERMAL, LASER	1.000 EA
34PA1005	PACKING GROUP, BALDOR	1.000 EA

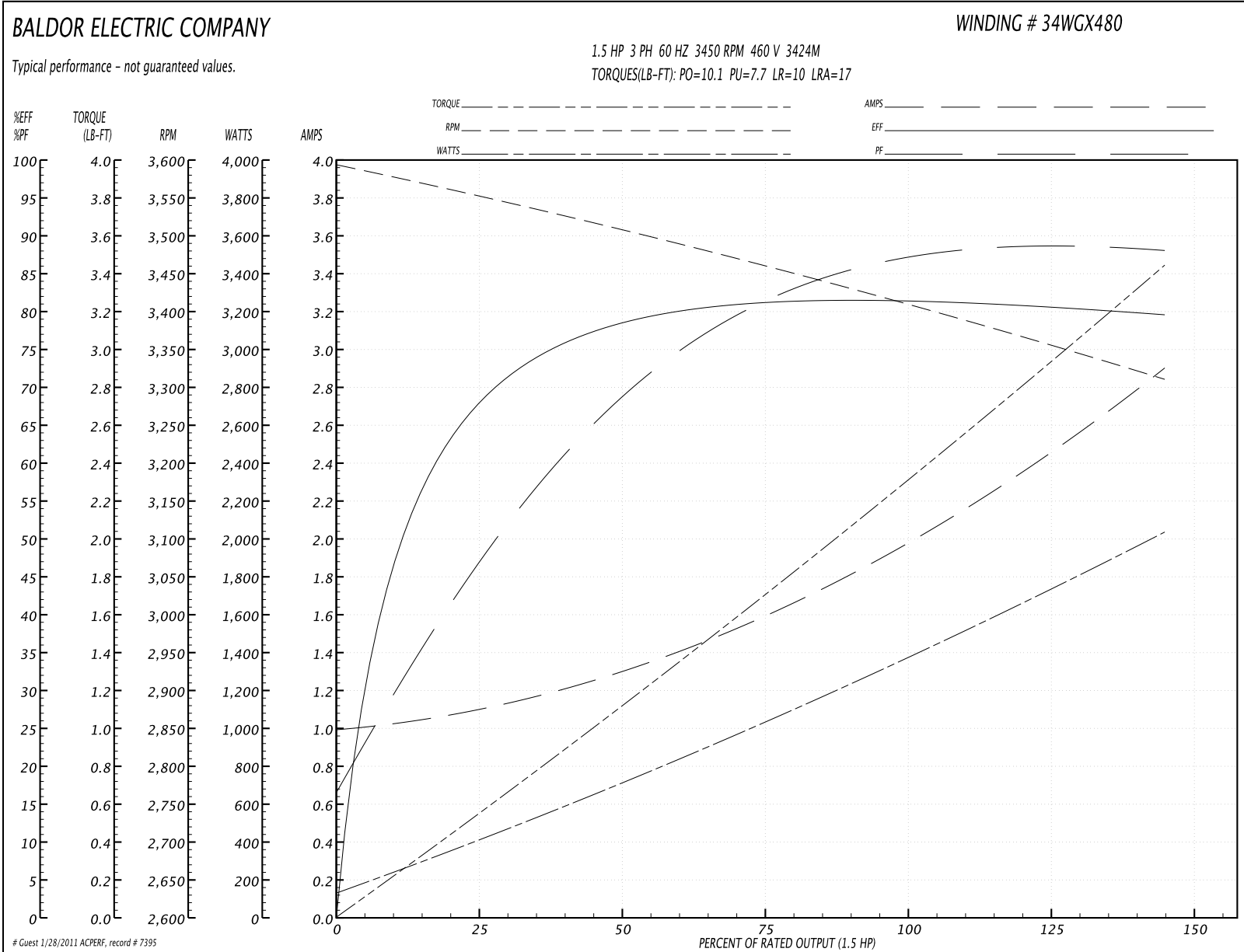
**Performance Data at 460V, 60Hz, 1.5HP (Typical performance - Not guaranteed values)**
**General Characteristics**

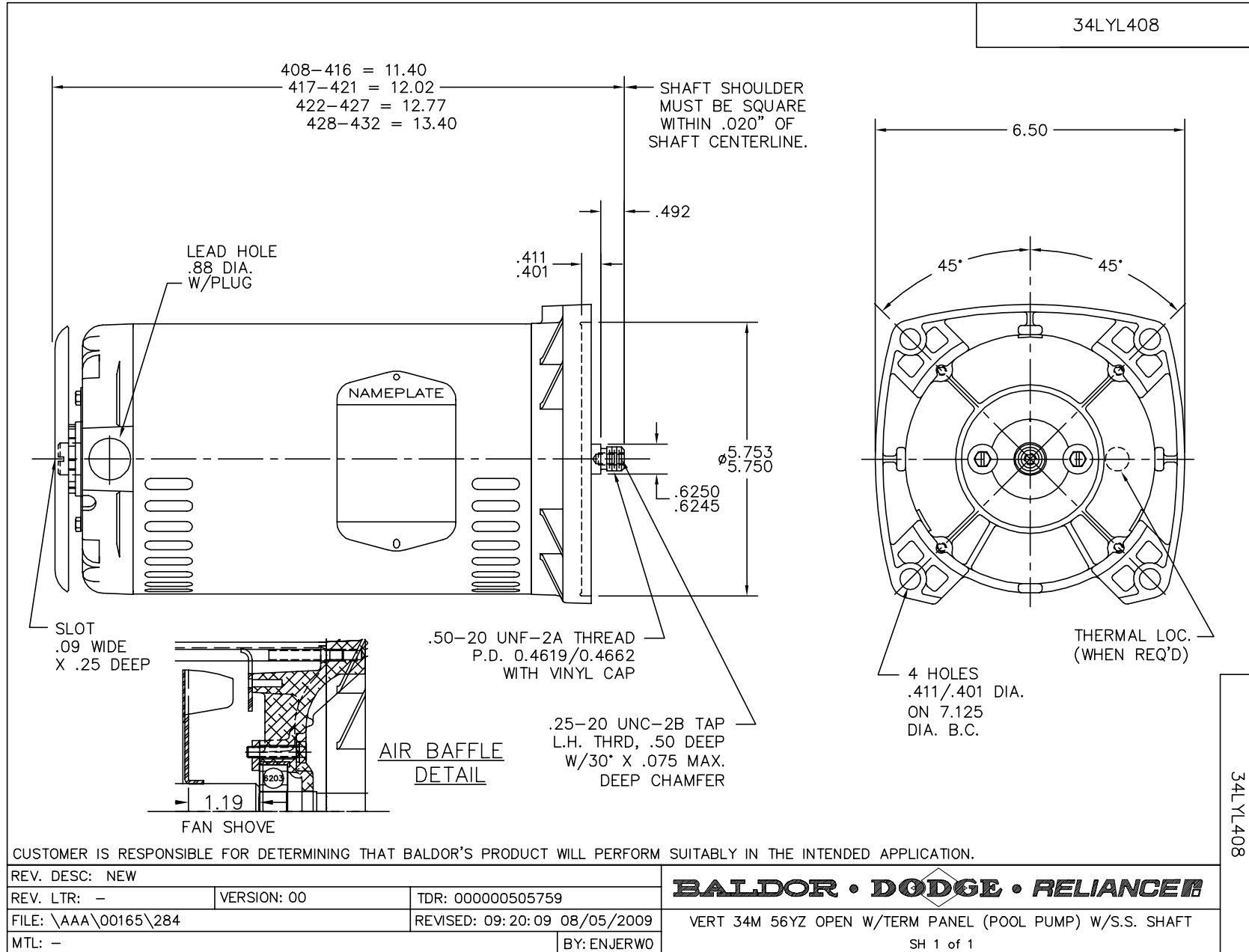
<b>Full Load Torque:</b>	2.3 LB-FT	<b>Start Configuration:</b>	DOL
<b>No-Load Current:</b>	1.0 Amps	<b>Break-Down Torque:</b>	10.1 LB-FT
<b>Line-line Res. @ 25°C.:</b>	0.922 Ohms A Ph / 0.0 Ohms B Ph	<b>Pull-Up Torque:</b>	7.7 LB-FT
<b>Temp. Rise @ Rated Load:</b>	35 C	<b>Locked-Rotor Torque:</b>	10.0 LB-FT
<b>Temp. Rise @ S.F. Load:</b>	40 C	<b>Starting Current:</b>	17.0 Amps

**Load Characteristics**

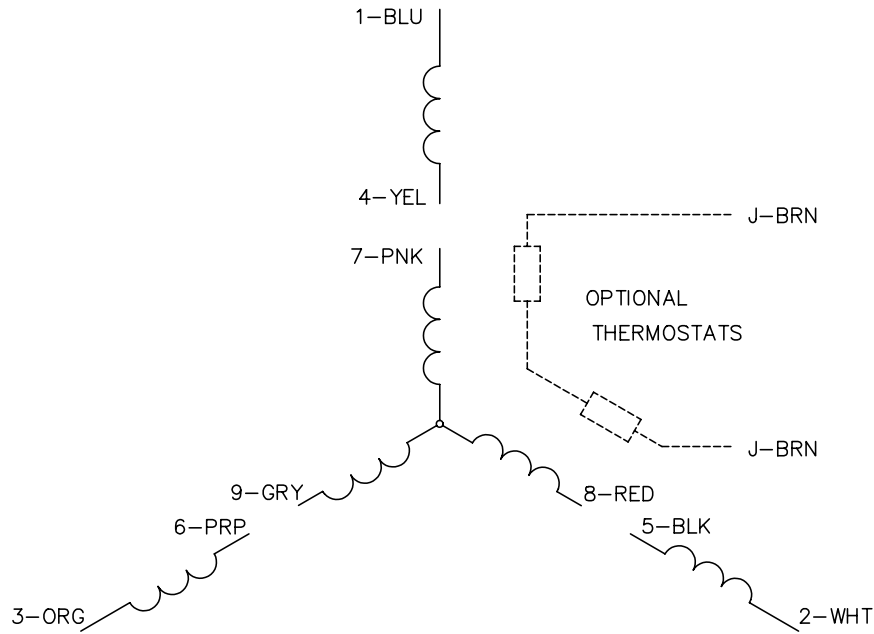
% of Rated Load	25	50	75	100	125	150	S.F.
<b>Power Factor:</b>	50.0	71.0	83.0	89.0	92.0	94.0	0.0
<b>Efficiency:</b>	68.0	78.4	81.2	81.6	80.9	79.4	0.0
<b>Speed:</b>	3545.0	3504.0	3460.0	3413.0	3364.0	3307.0	0.0
<b>Line Amperes:</b>	1.1	1.3	1.6	2.0	2.4	2.9	2.2

Performance Graph at 460V, 60Hz, 1.5HP Typical performance - Not guaranteed values

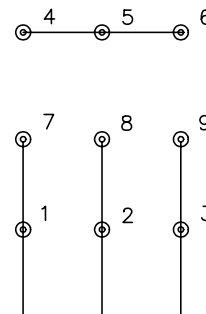




CD0005

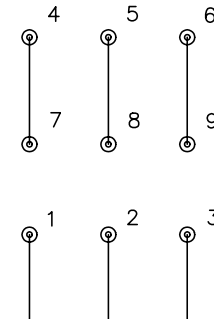


LOW VOLTAGE  
(2Y)



LINE

HIGH VOLTAGE  
(1Y)



LINE

NOTES:

1. INTERCHANGE ANY TWO LINE LEADS TO REVERSE ROTATION.
2. OPTIONAL THERMOSTATS ARE PROVIDED WHEN SPECIFIED.
3. ACTUAL NUMBER OF INTERNAL PARALLEL CIRCUITS MAY BE A MULTIPLE OF THOSE SHOWN ABOVE.
4. LEAD COLORS ARE OPTIONAL. LEADS MUST ALWAYS BE NUMBERED AS SHOWN.

REV. DESC: REVISE TO SHOW OPTIONAL COLORS			
REV. LTR: E	BY: JLP	REVISED: 01/19/99 10:15	TDR: 0171435
90000		FILE: AAA00005140	MDL: -
		MTL: -	

**BALDOR ELECTRIC Co.**

3PH, DV, 9 LEADS

CD0005