

All of our Ergo chairs were engineered with your total comfort in mind. Aesthetics, form and function are merged seamlessly in a single design, allowing Ergo chairs to be minutely adjusted to achieve unrivaled support. A synchro-tilt mechanism with infinite lock, sliding seat, pneumatic height adjustment, and headrest, are standard on all Ergo models. Add a choice of mesh, leather, or a selection from our Fabrix catalog, and you can build the perfect Ergo chair for you.

specifications

Overall Dimensions

26.4" x 26" x 45.3-50.8"
(W x D x H)

Seat

19.9" x 19.3" (W x D)

Back

20.7" x 28" (W x H)

Seat Height

18.1" (at lowest point)
21.6" (at highest point)

Weight

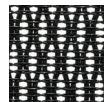
76 lbs

Cube

10.8

standard colors

black mesh W09-1



high-back

ME22ERGLT-N15

\$1,326



features

Tilt Tension Control

Recline rate adapts to weight of user.

Tilt Lock

Locks out tilt function.

Back Angle Adjustment

Sets back angle for personalized comfort in reclined position.

Synchro-Tilt

Back reclines in a preset ratio to seat.

Seat Height Adjustment

Sets seat height to desired position relative to floor.

Waterfall Seat

Front of cushion slopes to reduce pressure on the back of the knees.

Back Height Adjustment

Raise or lower to support the lumbar (lower back) region.

Seat Depth Adjustment

Adjusts seat depth relative to back.

Width Adjustable Arms

Adjusts arms in or out for proper ergonomic positioning.

Arm Height Adjustment

Adjusts arm up or down for proper ergonomic positioning while seated.

Swivel Arm

Arm pads angle in or out for proper ergonomic positioning.

Arm Depth Adjustment

Arm pads slide forward or backward for proper ergonomic positioning.

Single Lever Adjustment

Adjustable Headrest

single lever adjustment

Fine tune your Ergo with ease, using a single lever for seat depth and height, back angle, and tilt lock.



eurotech
a raynor group company

1.800.637.0005

email: customerservice@raynorgroup.com
catalog requests: literature@raynorgroup.com

All of our Ergo chairs were engineered with your total comfort in mind. Aesthetics, form and function are merged seamlessly in a single design, allowing Ergo chairs to be minutely adjusted to achieve unrivaled support. A synchro-tilt mechanism with infinite lock, sliding seat, pneumatic height adjustment, and headrest, are standard on all Ergo models. Add a choice of mesh, leather, or a selection from our Fabrix catalog, and you can build the perfect Ergo chair for you.

specifications

Overall Dimensions

26.4" x 26" x 39.4-44.9"
(W x D x H)

Seat

19.9" x 19.3" (W x D)

Back

20.7" x 22" (W x H)

Seat Height

18.1" (at lowest point)
21.6" (at highest point)

Weight

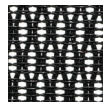
62 lbs

Cube

9.2

standard colors

black mesh W09-1



mid-back

ME5ERGLTLOW-N15

\$1,300



features

Tilt Tension Control

Recline rate adapts to weight of user.

Tilt Lock

Locks out tilt function.

Back Angle Adjustment

Sets back angle for personalized comfort in reclined position.

Synchro-Tilt

Back reclines in a preset ratio to seat.

Seat Height Adjustment

Sets seat height to desired position relative to floor.

Waterfall Seat

Front of cushion slopes to reduce pressure on the back of the knees.

Back Height Adjustment

Raise or lower to support the lumbar (lower back) region.

Seat Depth Adjustment

Adjusts seat depth relative to back.

Width Adjustable Arms

Adjusts arms in or out for proper ergonomic positioning.

Arm Height Adjustment

Adjusts arm up or down for proper ergonomic positioning while seated.

Swivel Arm

Arm pads angle in or out for proper ergonomic positioning.

Arm Depth Adjustment

Arm pads slide forward or backward for proper ergonomic positioning.

Single Lever Adjustment

single lever adjustment

Fine tune your Ergo with ease, using a single lever for seat depth and height, back angle, and tilt lock.



eurotech
a raynor group company

1.800.637.0005

email: customerservice@raynorgroup.com
catalog requests: literature@raynorgroup.com