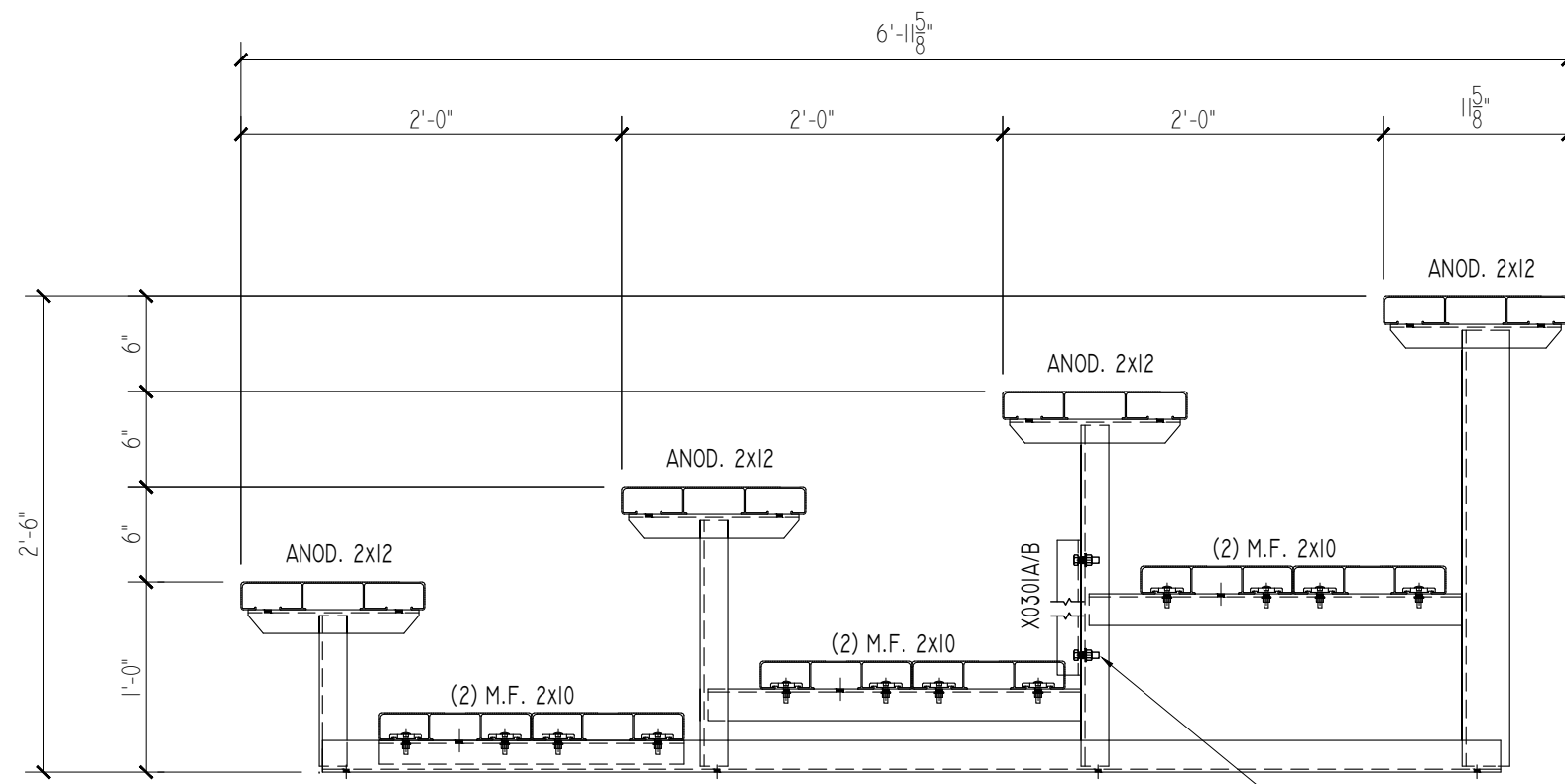


## SEATING PLAN

SCALE: 3/8"=1'-0"

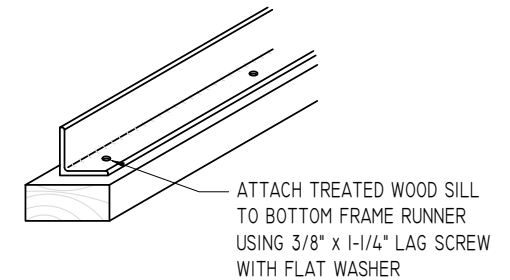
NET SEATS = 72



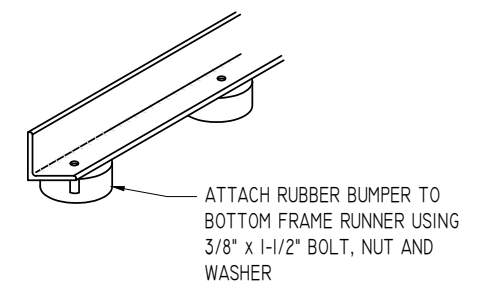
## TYPICAL SECTION THRU BLEACHER

SCALE: 1"=1'-0"

X-BRACE.  
PRE-ASSEMBLE.  
ATTACH USING 3/8" x  
1-1/4" BNW

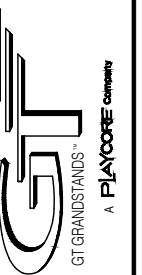


## MUD SILL ATTACHMENT



## OPTIONAL RUBBER BUMPER ATTACHMENT

2810 Sydney Road  
Plant City, Florida 33566  
Phone: 813-305-1415  
Fax: 813-305-1419  
www.gtgrandstands.com



PLAN AND SECTION  
4 ROW BLEACHER  
LU - UNIVERSAL SERIES

MODEL # LU-0427AD AND LU-0427GD  
OPTIONAL -MS (MUD SILLS)  
OPTIONAL -RB (RUBBER BUMPERS)

DRAWN BY

CHECKED BY

DATE

MAR 2010

SCALE

NOTED

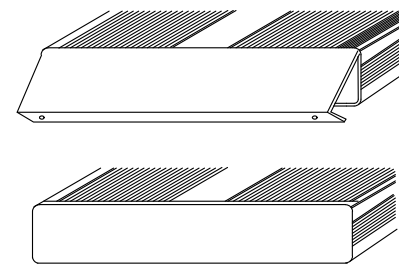
JOB NO.

LU-0427AD

LU-0427GD

DWG NO.

1 OF 2

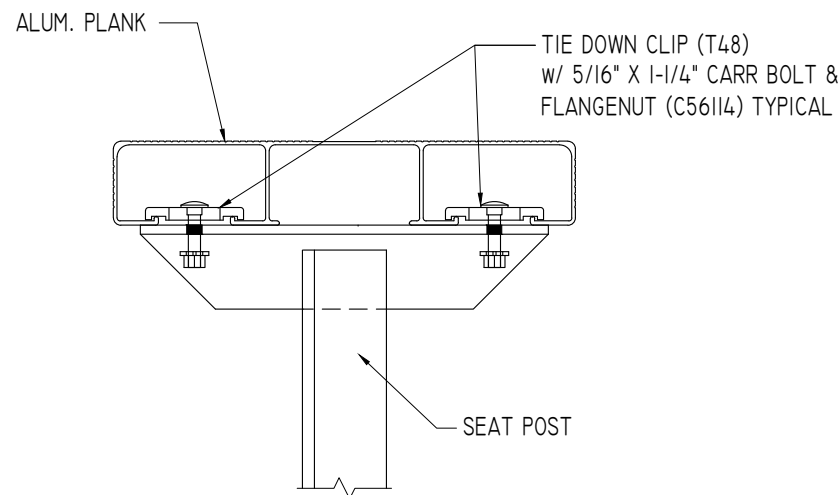


END CAP

1. LOCATE THE CHANNEL END CAP AS SHOWN, WITH THE WIDER FLANGE ON BOTTOM.
2. TAP THE CHANNEL INTO PLACE WITH A RUBBER Mallet OR SOFT WOOD.
3. DRILL (2) No.8 x 3/4" TEK SCREWS THRU END CAP AND BOTTOM FLANGE OF PLANK
4. ENDCAPS WITH STICKERS ARE TO GO AT ENDS OF SEAT PLANKS, PLAIN ENDCAPS GO ON ALL OTHER BOARDS.

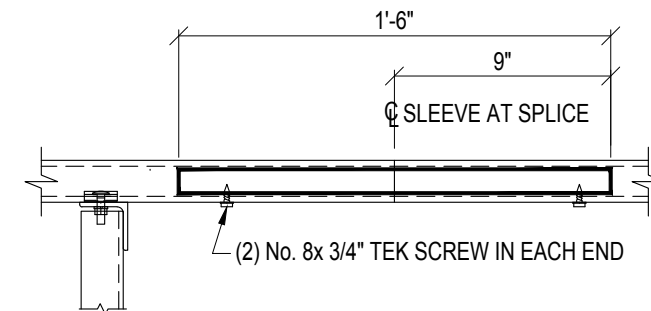
## ENDCAP INSTALLATION DETAIL

SCALE: 3" = 1'-0"

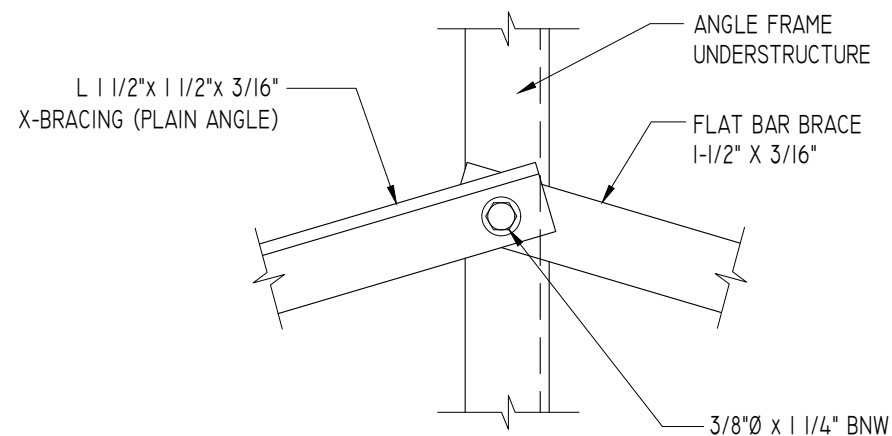


## SEAT PLANK INSTALLATION

SCALE: 3" = 1'-0"



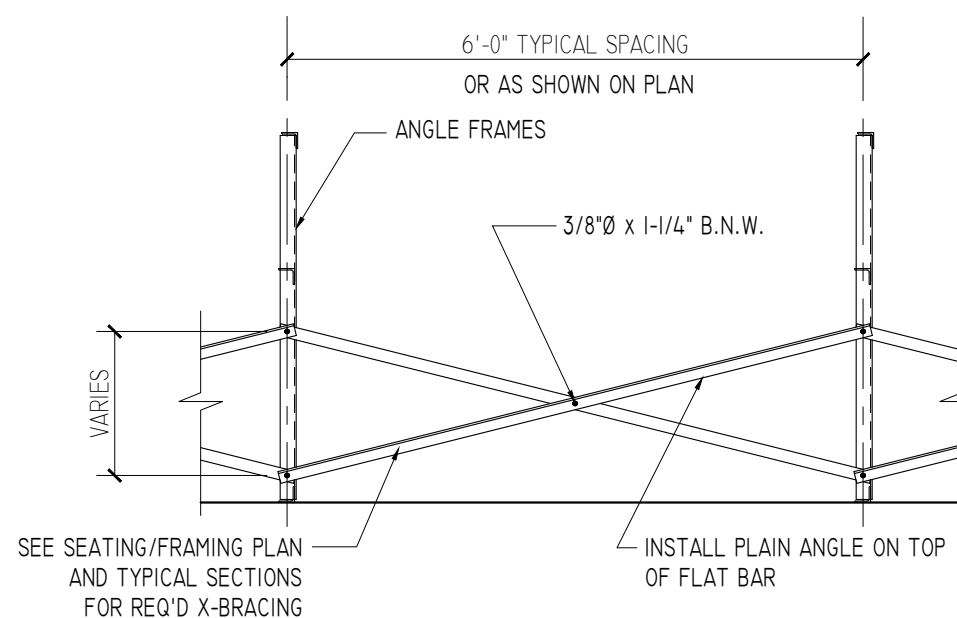
## ALUMINUM SLEEVE DETAIL



X-BRACE ASSEMBLY IS MADE UP OF (1) PLAIN ANGLE AND (1) FLAT BAR.

## TYPICAL X-BRACE TO FRAME CONN.

SCALE: 3" = 1'-0"

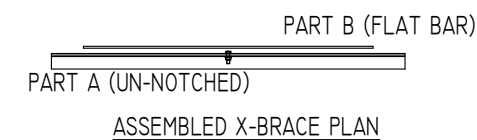


SEE SEATING/FRAMING PLAN AND TYPICAL SECTIONS FOR REQ'D X-BRACING

## TYPICAL BRACING LAYOUT

SCALE: 1/2" = 1'-0"

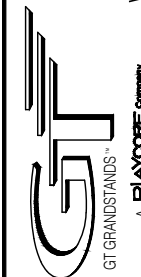
PRE-ASSEMBLE X-BRACE SETS. EACH SET CONSISTS OF A 'PART A (PLAIN ANGLE)' AND A 'PART B (FLAT BAR)'. PLACE THE PIECES TOGETHER AT THE FLAT SIDES AND CONNECT USING A 3/8" x 1-1/4" B.N.W.



MODEL # LU-04xxAD AND LU-04xxGD  
OPTIONAL -MS (MUD SILLS)  
OPTIONAL -RB (RUBBER BUMPERS)

MISC. DETAILS  
4 ROW BLEACHER  
LU - UNIVERSAL SERIES

2810 Sydney Road  
Plant City, Florida 33566  
Phone: 813-305-1415  
Fax: 813-305-1419  
www.gtgrandstands.com



DRAWN BY

CHECKED BY

DATE

MAR 2010

SCALE

NOTED

JOB NO.

LU-04xxAD

LU-04xxGD

DWG NO.