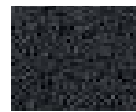


BEAM SEATING-SPEC SHEET



(P01) Black



(P03) Navy



Weight Tested
to hold 400 lbs-
per seat



(P06) Cool Grey



(P07) Burgundy

Available in 2-Seat Beam, 3-Seat Beam and 4-Seat Beam.

Beam with Poly Seat and Back ship in 2-3 Days ; Upholstered Seats ship in 2-3 Weeks

A. SEAT & BACK:

- 1 - High Impact Polypropylene -
- 2 - Colors: PO1 (Charcoal), PO3 (Navy Blue), PO6 (Cool Grey) & PO7 (Burgundy)

B. FRAME:

- 1 - 15 Gauge Steel, Injection Aluminum Alloy Back Supports
- 2 - Color: Sandtex Black Powder-Coat
- 3 - Free Standing with adjustable glides or Floor Mount Available

C. OPTIONS:

- 1 - Arms:
MODEL: Beam Arm Rt/Lf Armset
- 2 - Writing Tablet:
MODEL: Beam Anti-Panic Rt Tablet w/arm
MODEL: Beam Anti-Panic Rt Tablet w/arm
- 3 - Side Table:
MODEL: Beam Table - Replaces seat
- 4 - Upholstered Seat Options:
KFI House Upholsteries and Vinyl's
Grade-In Program - Mayer, Momentum, Spradling, Guilford of Maine
COM (Customers Own Material)



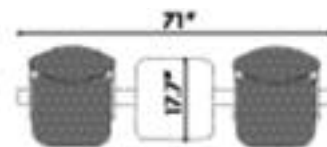
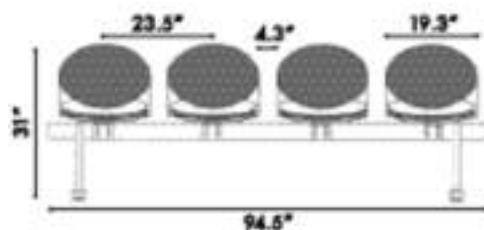
Small Business
HUBZone



Chair is 95%
recyclable
after its useful
life.*

Dimensions:

- A - Dimensions (47W x 22D x 31H) - 2 Seater, Ship Weight 58 lbs
- B - Dimensions (71W x 22D x 31H) - 3 Seater, Ship Weight 80 lbs
- C - Dimensions (95W x 22D x 31H) - 4 Seater, Ship Weight 101lbs



www.kfiseating.com