

Catalog Number	
Notes	Type

## FEATURES & SPECIFICATIONS

**INTENDED USE** — High performance parabolic luminaires for use in open area applications and electronic offices where optical control, visual comfort and light cut-off are important.

**ATTRIBUTES** — Design optimized for use with T8 lamps and low-profile electronic ballasts.

Choice of diffuse or specular louvers utilizing the latest developments in louver finishing for minimized louver iridescence.

**CONSTRUCTION** — Black reveal provides floating louver appearance, conceals optional air-supply slots.

Square corner end plates improve strength and durability.

Integral T-bar safety clips hold fixture to T-bar securely; no fasteners required. Heavy gauge hinges die-formed for maximum strength; spring action latches concealed in black reveal.

Housing formed from cold-rolled steel. Louver formed from anodized aluminum. No asbestos used in this product.

Overlapping flange and modular ceiling trims available factory installed with swing gate hangers or field convertible with optional trim and hangers.

**FINISH** — Five-stage iron-phosphate pretreatment ensures superior paint adhesion. Painted parts finished with high-gloss, baked white enamel.

**ELECTRICAL SYSTEM** — Thermally-protected, resetting, Class P, HPF, non-PCB, UL Listed, CSA certified ballast is standard.

Electronic ballasts are sound rated A.

Ballast disconnect provided standard where required to comply with US and Canadian electrical codes.

Fixture conforms to UL1570 and is suitable for damp locations. AWM, TFN or THHN wire used throughout, rated for required temperatures.

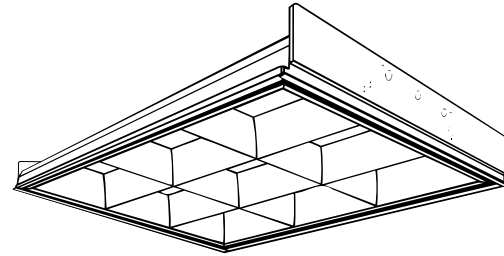
**LISTING** — UL Listed (Standard), CSA Certified or NOM Certified (see Options).

**WARRANTY** — Guaranteed for one year against mechanical defects in manufacture.

*Specifications subject to change without notice.*

## PARAMAX® Parabolic Troffer

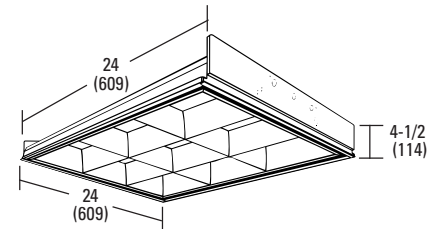
# 2PM3N 2'x2'



3" Louver Family  
6" Wide U Lamps

### Specifications

Length: 24 (609)  
Width: 24 (609)  
Depth: 4-1/2 (114)  
Weight: 16 lbs (7.3 kg)



All dimensions are inches (millimeters) unless otherwise specified.

## ORDERING INFORMATION

For shortest lead times, configure product using **standard options (shown in bold)**.

Example: 2PM3N G B 3 17 9LD MVOLT 1/3 GEB10IS

<b>2PM3N</b>		<b>2</b>		<b>U316</b>				Options <sup>3</sup>	
Series		Number of lamps		Lamp type		Voltage			
<b>2PM3N Paramax 3" louver family</b>		<b>2</b> Not included.		<b>U316 32W T8 U (6" leg)</b>		<b>MVOLT<sup>2</sup></b> 120 277 347 Others available.			
Trim type		Air function		Number of cells		Louver finish			
<b>G Grid</b> F Overlapping flange ST Screw slot		<b>B No air function</b> A Air supply/return (slots in side trim) H Heat removal (through lamp cavity, dampers available) D Dual function supply/return/removal		6 <b>9</b> 12 16		<b>LD Low iridescent anodized diffuse silver</b> LS Low iridescent anodized specular silver <sup>2</sup>			
								<b>1/4 One 4-lamp ballast</b> <b>GEB10IS Electronic ballast, ≤10% THD, instant start</b> GEB10RS Electronic ballast, ≤10% THD, rapid start <b>EL Emergency battery pack (nominal 300 lumens; see Fluorescent Battery Packs tab)</b> <b>EL14 Emergency battery pack</b> <b>PWS1836 6' prewire, 3/8" dia., 18-gauge, 3 wires</b> <b>QFC213 Reloc Quick-Flex</b> LST Tandem fixture pairs (shared ballasts) LP__ Lamped, specify lamp type and color <b>LP735 Lamped</b> GLR Internal fast-blow fuse <sup>4</sup> GMF Internal slow-blow fuse <sup>4</sup> ACS Air closure strips (A and D models only) APB Air-pattern control blades (A and D models only) PAF Painted after fabrication (white enamel) <b>JP Palletized and stretch-wrapped (G trim only)</b> CSA CSA Certified NOM NOM Certified	

### NOTES:

1 MVOLT standard for 120V and 277V applications. Some options require voltage specified.

2 Some options increase fixture depth. Consult factory if plenum space is a concern.

3 Must specify circuit wiring. Refer to [www.lithonia.com/Reloc](http://www.lithonia.com/Reloc) for additional information.

4 Must specify voltage.

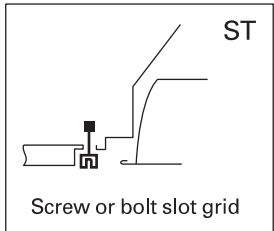
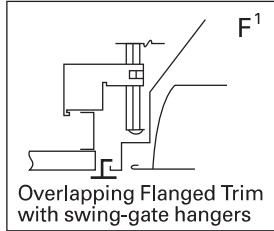
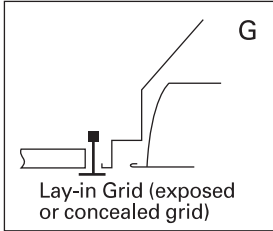
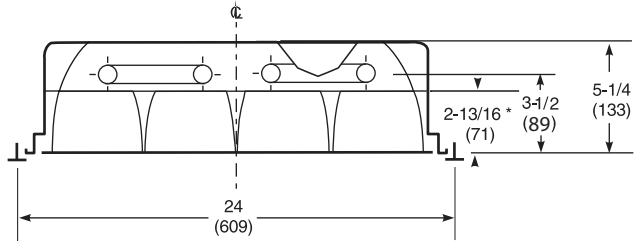
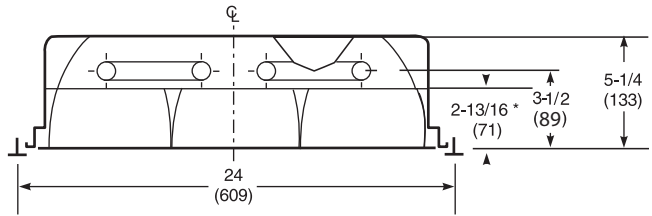
# 2PM3N 2'x2' 6" U Lamps, 3" Louver Family

## MOUNTING DATA

Continuous row mounting of flanged units requires CRE and CRM trim options. Consult factory.

Ceiling Type	Appropriate Trim Type
Exposed grid tee	<b>G</b>
Concealed grid tee	<b>G, ST</b>
Concealed Z-spline	<b>F</b>
Screw slot (consult factory)	<b>ST</b>
Acoustical tile, plaster or plasterboard on rigid support parallel to lamps	<b>F</b>

## DIMENSIONS



**NOTE:**

1 Recommended rough-in dimensions for F trim fixtures 24"x24" (Tolerance is +1/4", -0").  
Swing-gate range 1" to 4-3/16", span 23-1/2" to 26-5/16".

## PHOTOMETRICS

Full photometric data available upon request.

TEST NO: LTL14506  
2PM3N G B 2U316 9LD GEB  
LUMENS PER LAMP: 2850  
LAMPS PER LUMINAIRE: 2

TEST NO: LTL14507  
2PM3N G B 2U316 16LD GEB  
LUMENS PER LAMP: 2850  
LAMPS PER LUMINAIRE: 2

R.C.R.	pf	pc	Coefficients of Utilization								
			20%			50%			70%		
			50%	30%	10%	50%	30%	10%	50%	30%	10%
0	83	83	83	81	81	81	77	77	77		
1	75	72	70	73	71	69	70	68	67		
2	66	62	59	65	61	58	63	60	57		
3	59	54	50	58	53	50	56	52	49		
4	53	47	43	52	47	43	50	46	42		
5	48	42	38	47	41	37	45	41	37		
6	43	37	33	42	37	33	41	36	33		
7	39	33	29	38	33	29	37	33	29		
8	36	30	26	35	30	26	34	29	26		
9	33	27	24	32	27	23	31	27	23		
10	30	25	21	30	25	21	29	24	21		

R.C.R.	pf	pc	pw	Coefficients of Utilization								
				20%			50%			70%		
				50%	30%	10%	50%	30%	10%	50%	30%	10%
0	70	70	70	68	68	68	65	65	65			
1	63	61	59	62	60	58	59	58	56			
2	56	53	50	55	52	49	53	50	48			
3	50	46	43	49	45	42	47	44	41			
4	45	40	37	44	40	36	43	39	36			
5	40	35	32	40	35	32	38	34	31			
6	36	31	28	36	31	28	35	31	28			
7	33	28	25	33	28	25	32	28	25			
8	30	25	22	30	25	22	29	25	22			
9	28	23	20	27	23	20	27	23	20			
10	26	21	18	25	21	18	25	21	18			

Zonal Lumen Summary			
Zone	Lumens	% Lamp	% Fixture
0° - 30°	1269.5	22.3	32.0
0° - 40°	2135.9	37.5	53.8
0° - 60°	3634.7	63.8	91.6
0° - 90°	3969.3	69.6	100.0
90° - 180°	0.0	0.0	0.0
0° - 180°	3969.3	69.6	100.0

Zonal Lumen Summary			
Zone	Lumens	% Lamp	% Fixture
0° - 30°	1078.1	18.9	32.2
0° - 40°	1773.9	31.1	53.0
0° - 60°	3113.4	54.6	93.0
0° - 90°	3349.4	58.8	100.0
90° - 180°	0.0	0.0	0.0
0° - 180°	3349.4	58.8	100.0



**Lithonia Lighting**  
Fluorescent  
One Lithonia Way, Conyers, GA 30012  
Phone: 800-858-7763 Fax: 770-929-8789  
www.lithonia.com