

## FEATURES & SPECIFICATIONS

### INTENDED USE

Ideal where high brightness and good illumination levels are required such as retail, light industrial and warehouses.

### ATTRIBUTES

Available in one lamp or two lamp configuration.

### CONSTRUCTION

Heavy-duty channel, die-formed from code-gauge steel.

Sturdy channel cover secured by captive quarter-turn latch for easy access to wireway.

Combination endplate/channel connector furnished with each fixture.

### FINISH

Five-stage iron phosphate pretreatment ensures superior paint adhesion and rust resistance. Painted parts finished with high-gloss, baked white enamel.

### ELECTRICAL

Thermally protected, resetting, Class P, UL Listed and CSA Certified ballast is standard. Sound rating depends on lamp/ballast combination.

AWM, TFN, THHN wire throughout, rated for required temperatures.

### INSTALLATION

For unit or row installations, surface or suspended mounting.

### LISTING

UL listed to US and Canadian safety standards. Optional: Mexico NOM.

Damp location listed.

Listed for 25 degree C ambient temperature.

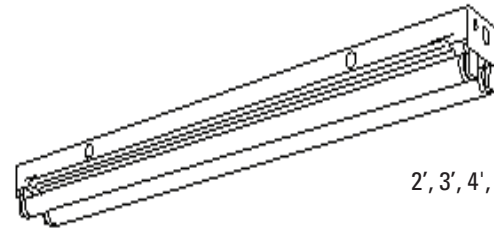
### WARRANTY

Guaranteed for one year against mechanical defects in manufacture.

Specifications subject to change without notice.

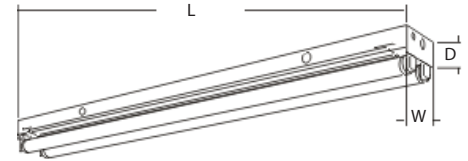
Catalog Number
Notes
Type

### General-Purpose Strip



# C

2', 3', 4', 6' and 8' length  
1 or 2 lamps



### Specifications

Length: 24" (61.0)
36" (91.4)
48" (121.9)
72" (182.9)
96" (243.8)
Width: 4-3/8" (11.1)
Fixture Depth: 2-/16" (5.2)

All dimensions are inches (centimeters).

### ORDERING INFORMATION

Lead times will vary depending upon options selected. Consult your sales representative.

**Example:** C 2 32 MVOLT GEB10IS

Series	Number of lamps	Lamp type	Voltage	Options
<b>C</b> <b>General-purpose strip</b> For tandem double length unit, add prefix T. Example: TC	1 2 lamp not included	<u>T8</u> 17 17W T8 (24") 25 25W T8 (36") <b>32</b> 32W T8 (48") 96T8 59W T8 slimline (96") <u>T12 Slimline</u> 36 30W slimline (36") 48 38W slimline (48") 72 55W slimline (72") <b>96</b> 75W slimline (96") <u>T12</u> 20 20W T12 (24") 30 30W T12 (36") 40 40W T12 (48")	MVOLT <sup>1,2</sup> 120 277 347 others available	<b>GEB</b> Electronic ballasts, ≤20%THD <sup>3</sup> <b>GEB10IS</b> Electronic ballasts, ≤10%THD instant start <sup>1,2</sup> GEB10RS T8 electronic ballast, ≤10%THD, rapid start <b>BILP</b> High-efficiency ballast, .78bf (low), instant start <b>BINP</b> T8 high-performance ballast, .88bf (normal), instant start <b>BIHP</b> T8 high-performance ballast, 1.20bf (high), instant start <sup>4</sup> 1/4 One four-lamp ballast <sup>5</sup> <b>EL</b> Emergency battery pack (nominal 300 lumens) <b>GLR</b> Internal fast-blow fuse (add X for external) <sup>6</sup> <b>GMF</b> Internal slow-blow fuse (add X for external) <sup>6</sup> <b>PLR</b> Plug-in wiring; specify 1, 2, or 3 branch circuits and hot wires (A = Black, B = Red, C = Blue, AB or AC) <b>TILW</b> Tandem in-line wiring <b>CW</b> Cold-weather ballast: 0 degree F starting temp <b>CSA</b> CSA Certified (only required for 347V) <b>NOM</b> NOM Certified

### Accessories: Order as separate catalog number.

<b>SQ</b> Swivel stem hanger (specify length in 2" increments)	<b>HRC1</b> Hooker T-bar hanger (1-1/2" from ceiling).
<b>1B</b> Ceiling spacer (adjusts from 1-1/2" to 2-1/2" from ceiling)	<b>WGCSMR</b> Wireguard, 4' white for symmetric reflector. <sup>7</sup>
<b>CONLGC</b> 12" screw-on channel connector	<b>WGCASR</b> Wireguard, 4' white for asymmetric reflector. <sup>7</sup>
<b>WGPU NST</b> Wireguard, 4' white. <sup>7</sup>	<b>CSMR 48</b> Symmetric reflector, 4' white, 7" aperture. <sup>7</sup>
<b>HC36</b> Chain hangers (1 pair, 36" long)	<b>CASR 48</b> Asymmetric reflector, 4' white, 5-3/4" wide. <sup>7</sup>
<b>HRC</b> Hooker T-bar hanger (flush to ceiling)	

### NOTES:

- MVOLT standard for 120-277V applications, 50-60 mhz operation. Some options require voltage specified.
- T8 lamps only.
- Slimline lamps only.
- Not available in 347V.
- Not available in slimline.
- Specify voltage.
- Order two for 8' fixtures.

# C General-Purpose Strip

## MOUNTING DATA

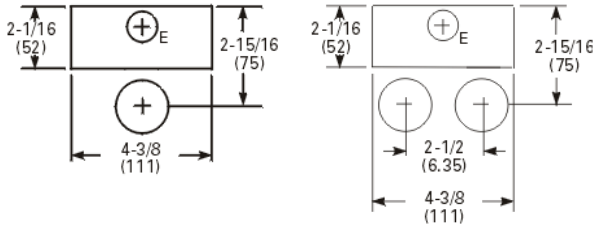
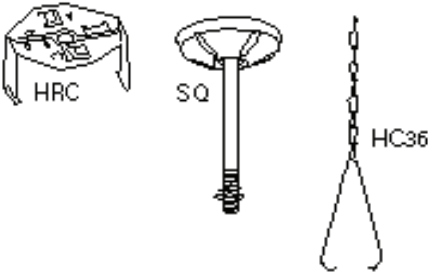
For unit or row installation, surface or suspended mounting.

Unit installation — Minimum of two hangers required.

Row installation — Two hangers per channel required. One per fixture plus one per row if CONLGC installed.

Hooker® (HRC) and HC Hangers — Minimum two per channel (unit and row)

See ACCESSORIES below for hanging devices.



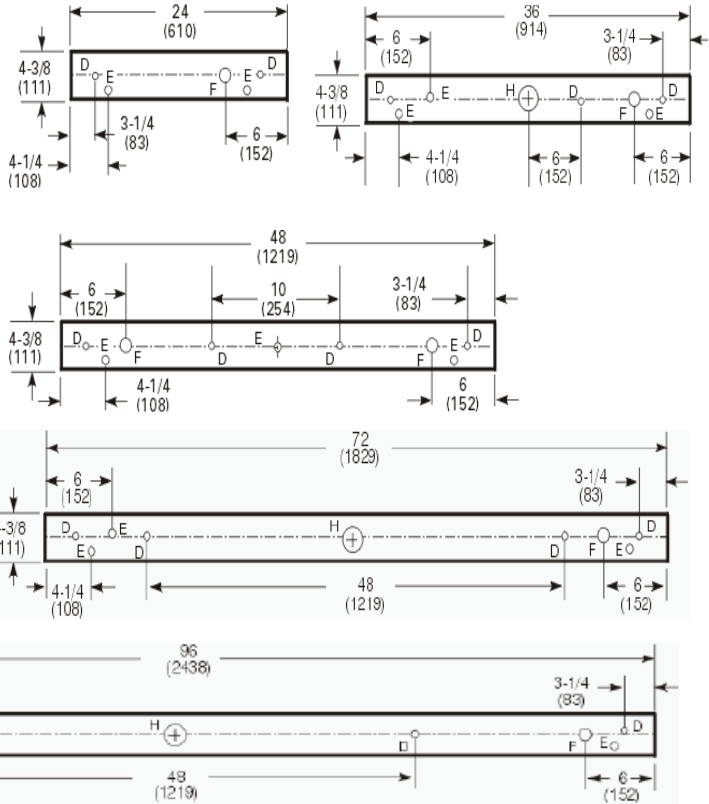
D = 11/16 (17) Dia.K.O.  
 E = 7/8 (22) Dia.K.O.  
 F = 1-1/4 (32) Dia.K.O.  
 H = 2 (51) Dia.K.O.

## DIMENSIONS

Inches (millimeters). Subject to change without notice.

48", 72" and 96" have only two 7/8" K.O.'s 6" from each end

24" and 36" have only two 7/8" K.O.'s 3-1/4" from each end



## PHOTOMETRICS

Calculated using the zonal cavity method in accordance with IESNA LM41 procedure. Floor reflectances are 20%. Lamp configurations shown are typical. All data based on 25°C. Full photometric data on these and other configurations available upon request.

C 2 32

TEST NO: LTL 5181  
 LUMENS PER LAMP: 2900

C 2 96

TEST NO: LTL 18310  
 LUMENS PER LAMP: 6300

FCR	Coefficients of Utilization									
	pf	80%			20%			50%		
		pc	50%	30%	10%	50%	30%	10%	50%	30%
0	106	106	106	102	102	102	93	93	93	
1	89	84	79	85	80	76	78	74	71	
2	76	68	62	72	66	60	66	61	56	
3	65	57	50	62	55	49	57	51	45	
4	57	48	42	55	47	40	50	43	38	
5	51	42	35	48	40	34	44	37	32	
6	45	36	30	43	35	29	40	33	28	
7	41	32	26	39	31	25	36	29	24	
8	37	29	23	35	28	22	33	26	21	
9	34	26	20	32	25	20	30	23	19	
10	31	23	18	30	23	18	28	21	17	

FCR	Coefficients of Utilization									
	pf	80%			20%			50%		
		pc	50%	30%	10%	50%	30%	10%	50%	30%
0	103	103	103	98	98	98	90	90	90	
1	86	82	78	82	78	74	75	72	69	
2	74	67	61	70	64	59	64	59	55	
3	64	56	49	61	54	48	56	49	44	
4	56	47	41	53	46	40	49	42	37	
5	49	41	35	47	39	34	43	37	31	
6	44	36	30	42	34	29	39	32	27	
7	40	32	26	38	30	25	35	28	24	
8	36	28	23	35	27	22	32	25	21	
9	33	25	20	32	25	20	29	23	19	
10	30	23	18	29	22	18	27	21	17	

Zonal Lumen Summary			
Zone	Lumens	% Lamp	% Fixture
0° - 30°	842.1	14.5	15.6
0° - 40°	1435.8	24.8	26.7
0° - 60°	2810.1	48.4	52.2
0° - 90°	4362.5	75.2	81.0
90° - 180°	1021.0	17.6	19.0
0° - 180°	5383.6	92.8	100.0

Zonal Lumen Summary			
Zone	Lumens	% Lamp	% Fixture
0° - 30°	1785.8	14.2	15.7
0° - 40°	3042.4	24.1	26.8
0° - 60°	5944.0	47.2	52.3
0° - 90°	9027.5	71.6	79.4
90° - 180°	2341.8	18.6	20.6
0° - 180°	11369.4	90.2	100.0

### Energy (Calculated in accordance with NEMA standard LE-5)

LER, FL	ANNUAL		BALLAST FACTOR	WATTS
	ENERGY COST*	LAMP DESCRIPTION		
86.2	\$2.79	(2)T8 F32	.88	55

\* Comparative yearly lighting energy cost per 1000 lumens

### Energy (Calculated in accordance with NEMA standard LE-5)

ORDERING INFORMATION	ANNUAL		LAMP DESCRIPTION	LUMENS	BALLAST FACTOR	WATTS
	LER, FL	ENERGY COST*				
C 2 32 MVOLT GEB10IS	77.6	\$3.09	F32T8/735	2800	.88	59
C 2 32 MVOLT BILP	93.6	\$2.56	F32T8/835/HT8	3100	.78	48

\* Comparative yearly lighting energy cost per 1000 lumens

